

1246-1248 LAKE MURRAY BLVD

Irmo, South Carolina



FOR LEASE

- ◆ Available Space:
3,302 SF
2,142 SF
- ◆ Great Irmo location near the Irmo Chamber of Commerce
- ◆ Great Visibility
- ◆ LEASE RATE: \$10.00- \$12.00 / SF NNN

DEMOGRAPHICS

Population:

1 Mile Radius	7,063
3 Miles Radius	47,632
5 miles Radius	82,961

Average Household Income:

1 Mile Radius	\$90,526
3 Miles Radius	\$83,903
5 Miles Radius	\$78,749

Traffic Count:

Lake Murray Blvd 24,300 VPD

CONTACT:

**Jeremy Wilson, CPM,
CCIM**

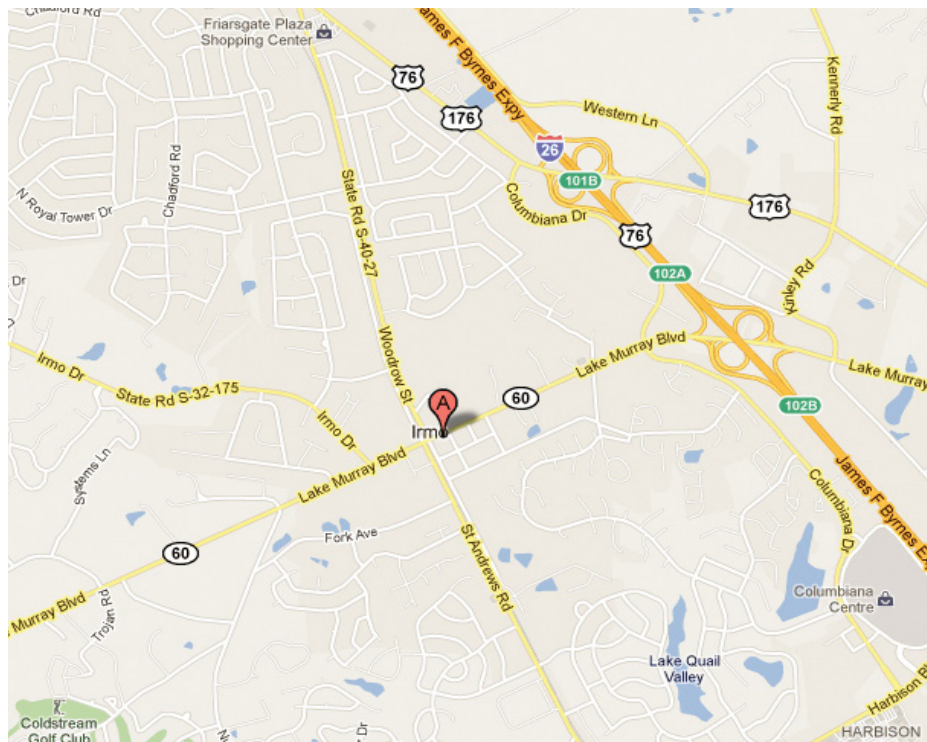
803.255.8601

jwilson@wilsonkibler.com

Coleman Davis

803.255.8653

cdavis@wilsonkibler.com



**Newmark Grubb
Wilson Kibler**

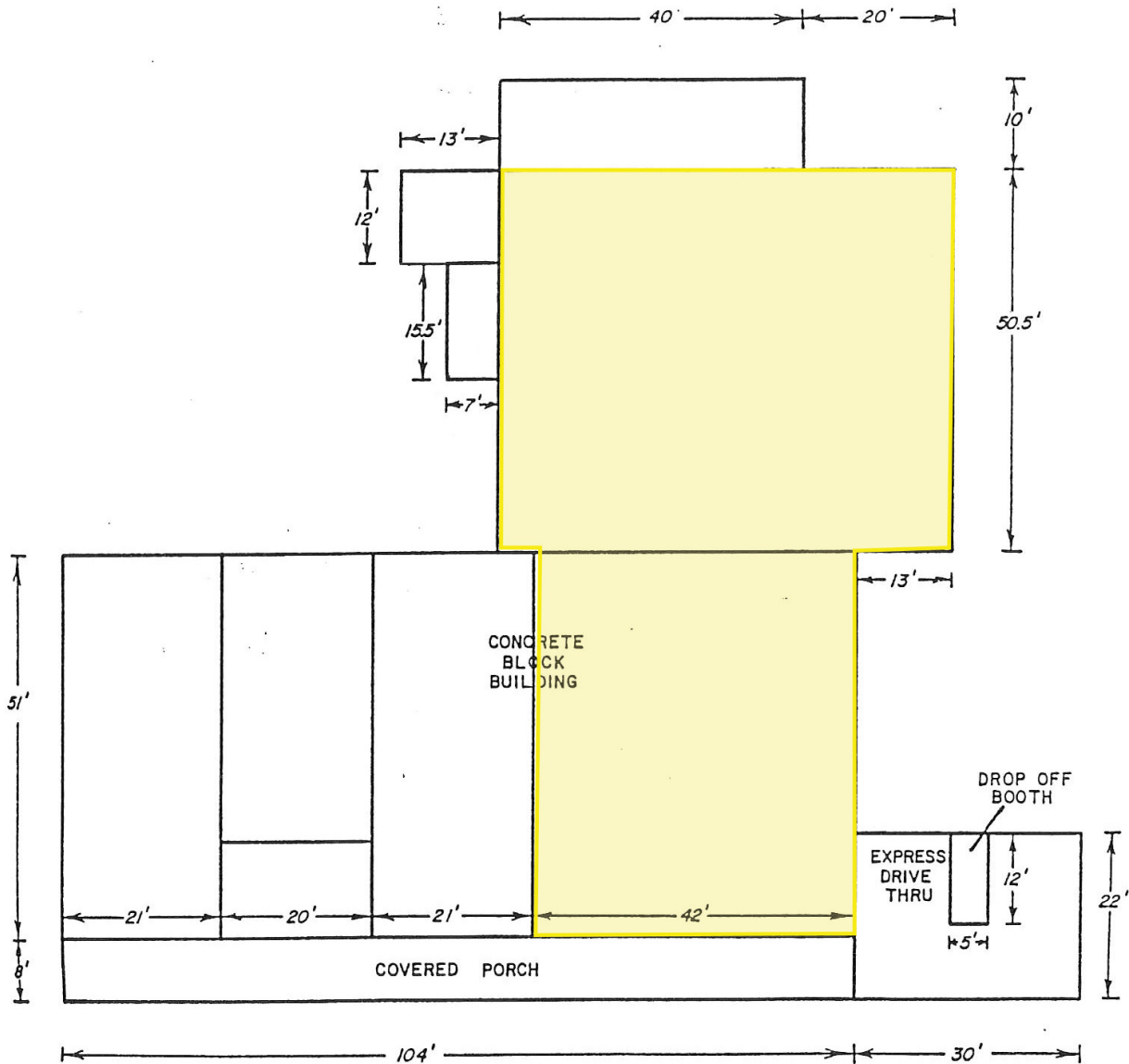
An Affiliate of Newmark Grubb | Independently Owned & Operated

1111 Laurel Street, Columbia, SC 29201 T 803.779.8600 www.wilsonkibler.com

The information contained herein has been obtained from sources we believe to be reliable; however, Newmark Grubb Wilson Kibler has not conducted any investigation regarding these matters and makes no warranty or representation whatsoever regarding the accuracy or completeness of the information provided.

1246-1248 LAKE MURRAY BLVD

Irmo, South Carolina



Newmark Grubb
Wilson Kibler

Jeremy Wilson, CPM, CCIM

803.255.8601

jwilson@wilsonkibler.com

Coleman Davis

803.255.8653

cdavis@wilsonkibler.com

An Affiliate of Newmark Grubb | Independently Owned & Operated

1111 Laurel Street, Columbia, SC 29201

T 803.779.8600

www.wilsonkibler.com