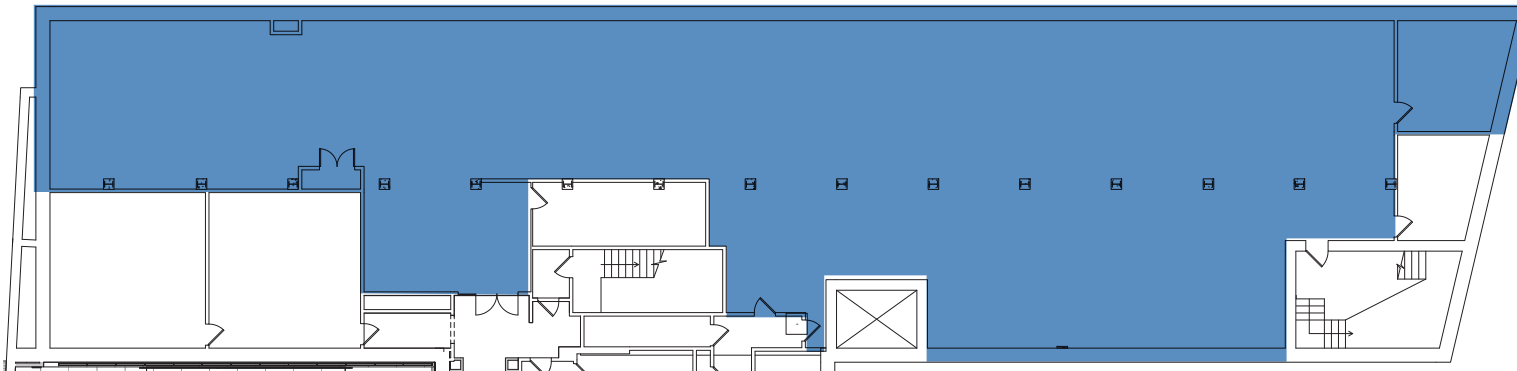


# 300 A STREET

PART OF THE BRICKS AT FORT POINT

## GROUND FLOOR 7,698 SF



### LEASING CONTACT INFORMATION

**JON FRENI**

+1 617 912 7044

jon.freni@cbre-ne.com

**PETER DOMINSKI**

+1 617 912 7048

peter.dominski@cbre-ne.com

**SUZANNE BROWN**

+1 617 912 6931

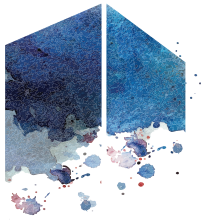
suzanne.brown@cbre-ne.com

© 2018 CB Richard Ellis - N.E. Partners, LP. This information has been obtained from sources believed reliable. We have not verified it and make no guarantee, warranty or representation about it. Any projections, opinions, assumptions or estimates used are for example only and do not represent the current or future performance of the property. You and your advisors should conduct a careful, independent investigation of the property to determine to your satisfaction the suitability of the property for your needs. Photos herein are the property of their respective owners and use of these images without the express written consent of the owner is prohibited.

CBRE and the CBRE logo are service marks of CBRE, Inc. and/or its affiliated or related companies in the United States and other countries. All other marks displayed on this document are the property of their respective owners.

**CBRE** | New England

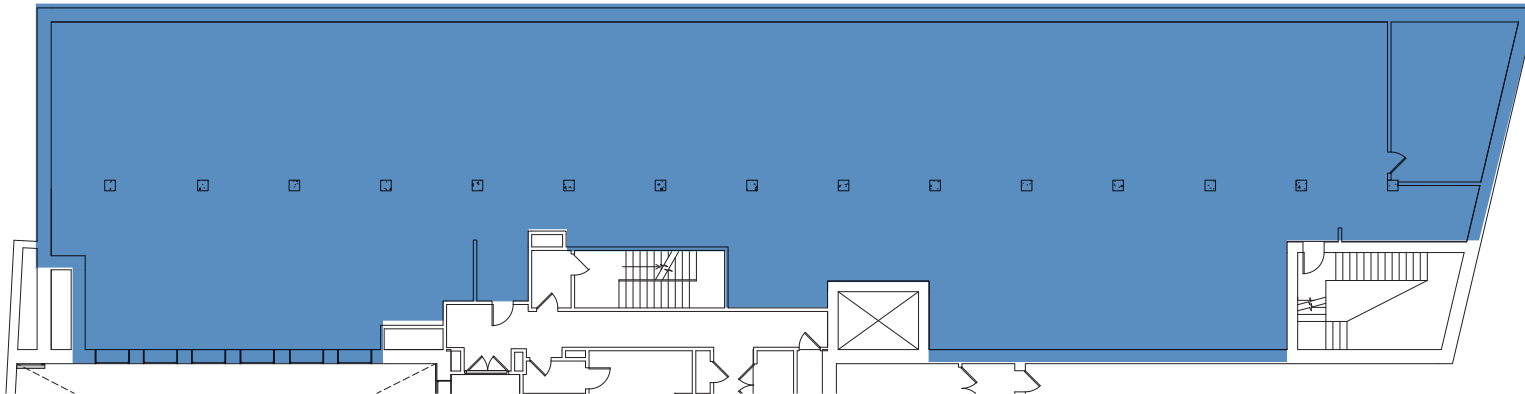
CB Richard Ellis - N.E. Partners, LP, a CBRE Joint Venture



# 300 A STREET

PART OF THE BRICKS AT FORT POINT

## 1ST FLOOR 9,670 SF



### LEASING CONTACT INFORMATION

**JON FRENI**

+1 617 912 7044

jon.freni@cbre-ne.com

**PETER DOMINSKI**

+1 617 912 7048

peter.dominski@cbre-ne.com

**SUZANNE BROWN**

+1 617 912 6931

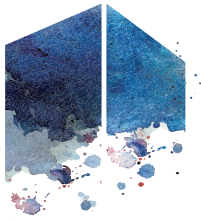
suzanne.brown@cbre-ne.com

© 2018 CB Richard Ellis - N.E. Partners, LP. This information has been obtained from sources believed reliable. We have not verified it and make no guarantee, warranty or representation about it. Any projections, opinions, assumptions or estimates used are for example only and do not represent the current or future performance of the property. You and your advisors should conduct a careful, independent investigation of the property to determine to your satisfaction the suitability of the property for your needs. Photos herein are the property of their respective owners and use of these images without the express written consent of the owner is prohibited.

CBRE and the CBRE logo are service marks of CBRE, Inc. and/or its affiliated or related companies in the United States and other countries. All other marks displayed on this document are the property of their respective owners.

**CBRE** | New England

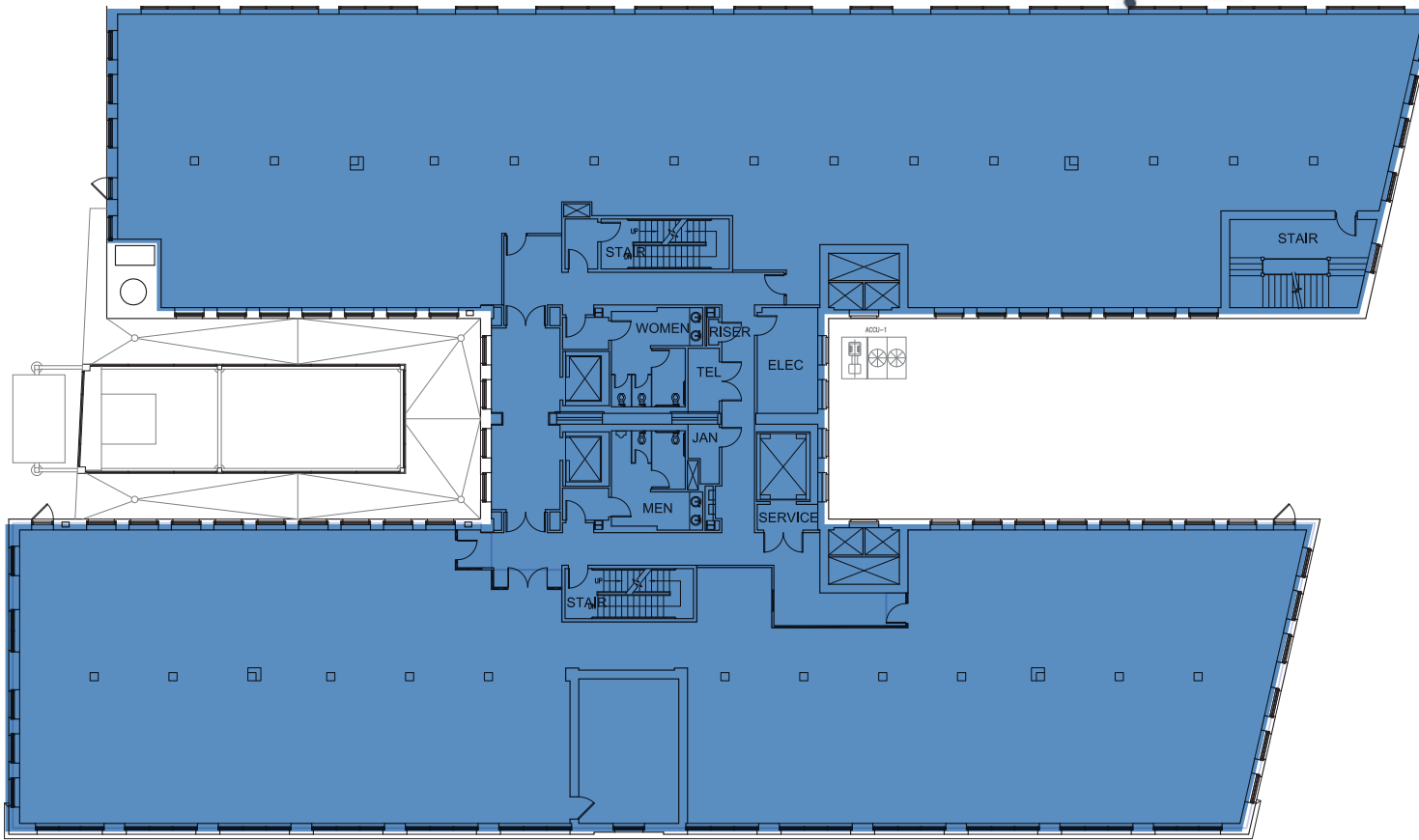
CB Richard Ellis - N.E. Partners, LP, a CBRE Joint Venture



# 300 A STREET

PART OF THE BRICKS AT FORT POINT

## 2ND FLOOR 9,649-19,812 SF



### LEASING CONTACT INFORMATION

#### JON FRENI

+1 617 912 7044

jon.freni@cbre-ne.com

#### PETER DOMINSKI

+1 617 912 7048

peter.dominski@cbre-ne.com

#### SUZANNE BROWN

+1 617 912 6931

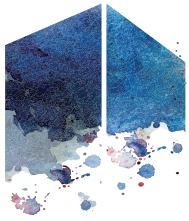
suzanne.brown@cbre-ne.com

© 2018 CB Richard Ellis - N.E. Partners, LP. This information has been obtained from sources believed reliable. We have not verified it and make no guarantee, warranty or representation about it. Any projections, opinions, assumptions or estimates used are for example only and do not represent the current or future performance of the property. You and your advisors should conduct a careful, independent investigation of the property to determine to your satisfaction the suitability of the property for your needs. Photos herein are the property of their respective owners and use of these images without the express written consent of the owner is prohibited.

CBRE and the CBRE logo are service marks of CBRE, Inc. and/or its affiliated or related companies in the United States and other countries. All other marks displayed on this document are the property of their respective owners.

# CBRE | New England

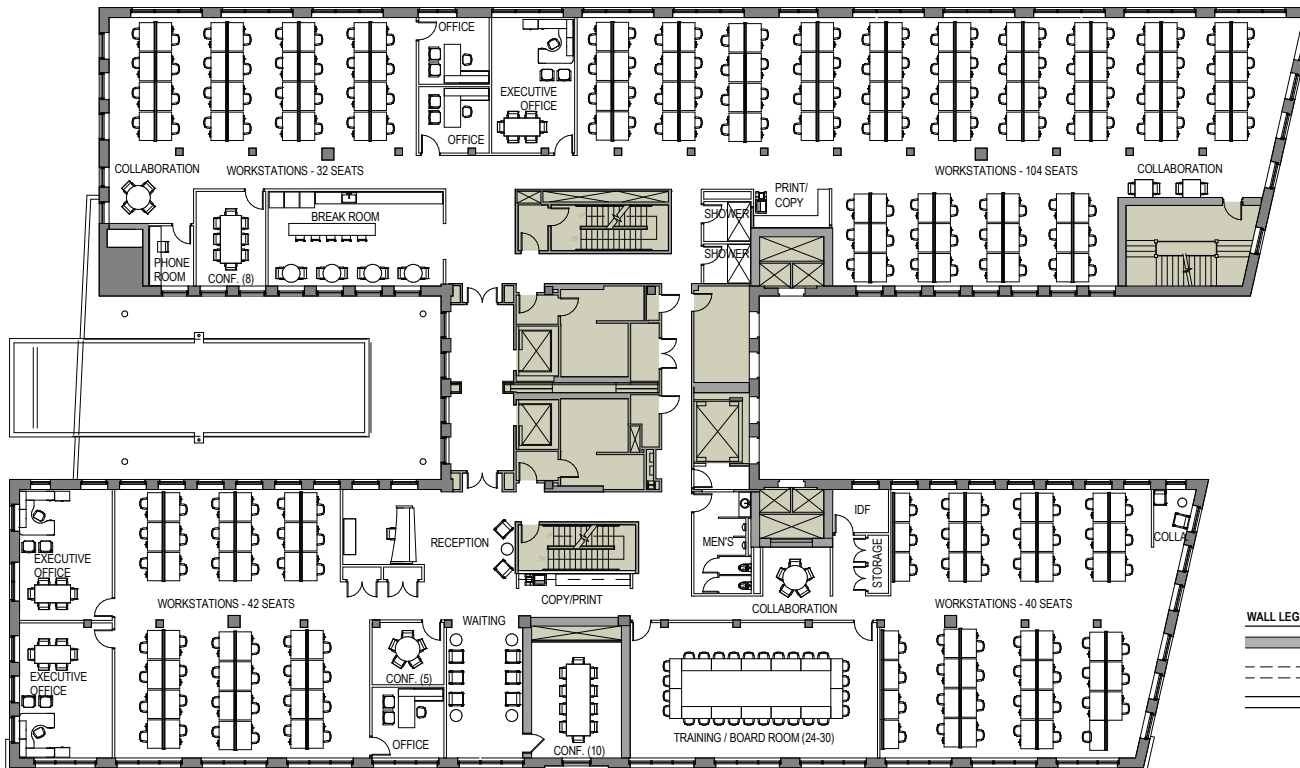
CB Richard Ellis - N.E. Partners, LP, a CBRE Joint Venture



# 300 A STREET

PART OF THE BRICKS AT FORT POINT

# FIT PLAN



**KEY**  
 226 workstations  
 6 offices  
 4 conference rooms  
 4 collaboration areas

**WALL LEGEND**  
 ——— EXISTING CONSTRUCTION  
 - - - - EXISTING TO BE DEMOLISHED  
 = = = = NEW CONSTRUCTION

## LEASING CONTACT INFORMATION

**JON FRENI**  
 +1 617 912 844  
 jon.freni@cbre-ne.com

**PETER DOMINSKI**  
 +1 617 912 7048  
 peter.dominski@cbre-ne.com

**SUZANNE BROWN**  
 +1 617 912 6931  
 suzanne.brown@cbre-ne.com

© 2018 CB Richard Ellis - N.E. Partners, LP. This information has been obtained from sources believed reliable. We have not verified it and make no guarantee, warranty or representation about it. Any projections, opinions, assumptions or estimates used are for example only and do not represent the current or future performance of the property. You and your advisors should conduct a careful, independent investigation of the property to determine to your satisfaction the suitability of the property for your needs. Photos herein are the property of their respective owners and use of these images without the express written consent of the owner is prohibited.

CBRE and the CBRE logo are service marks of CBRE, Inc. and/or its affiliated or related companies in the United States and other countries. All other marks displayed on this document are the property of their respective owners.



CB Richard Ellis - N.E. Partners, LP, a CBRE Joint Venture