

FOR LEASE

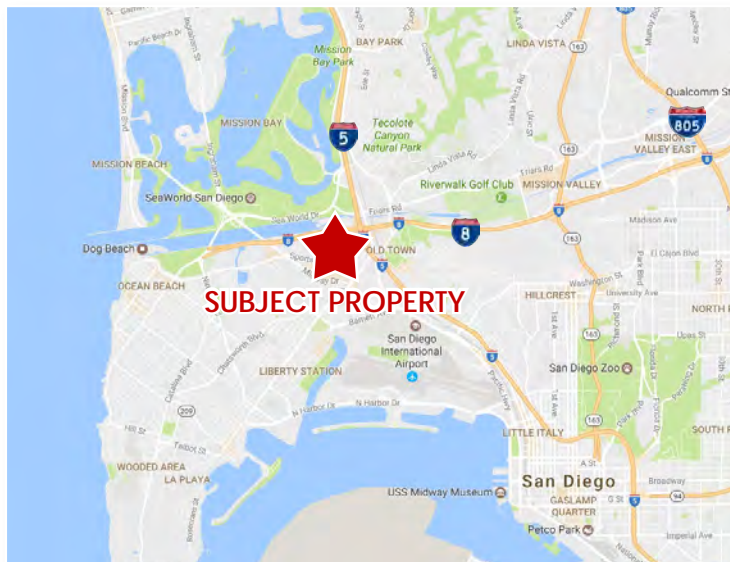
3421 Hancock St - San Diego, CA 92101



SPORTS ARENA DISTRICT FLEX/OFFICE SPACE AVAILABLE

Property Features

- ± 4,000 SF commercial industrial building
- Central location behind the Sports Arena
- Second story flex/office space
- Large open rooms
- Single restroom
- Suite access front and rear
- Secured yard with wide alley access
- **Lease Rate: \$1.25 PSF**

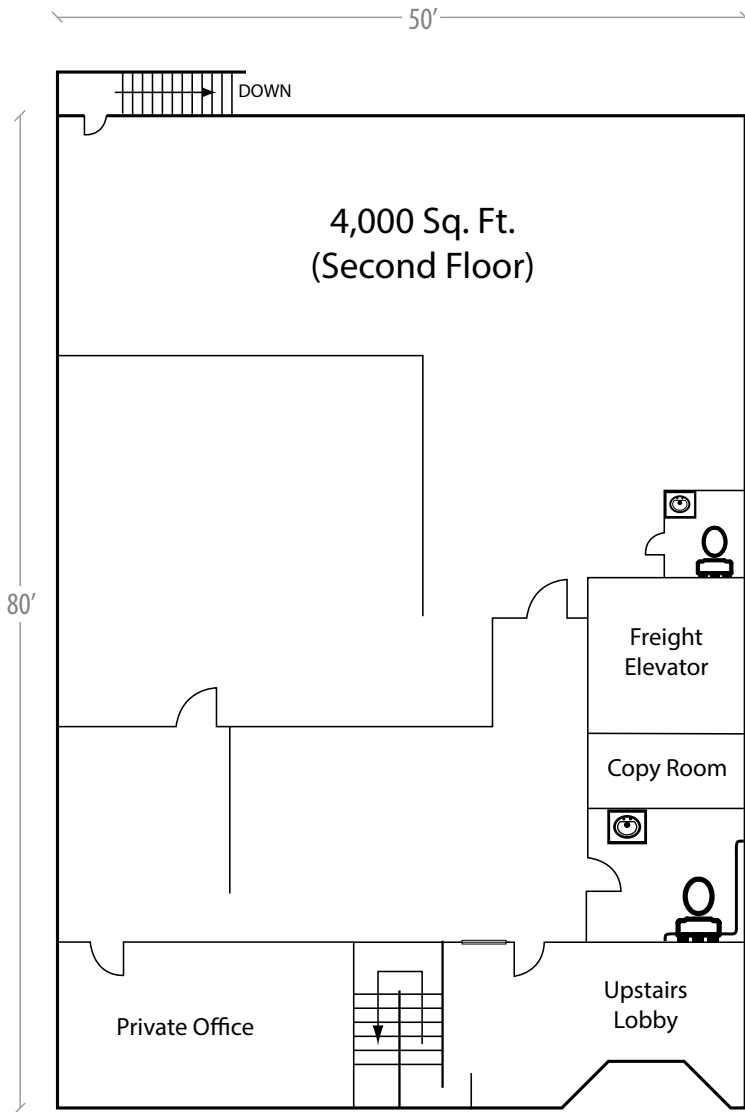


Alex Weiss
(760) 448-2452
aweiss@lee-associates.com
CalBRE #01893865

Lee & Associates Commercial Real Estate Services - 1900 Wright Place Ste 200 - Carlsbad, CA 92008

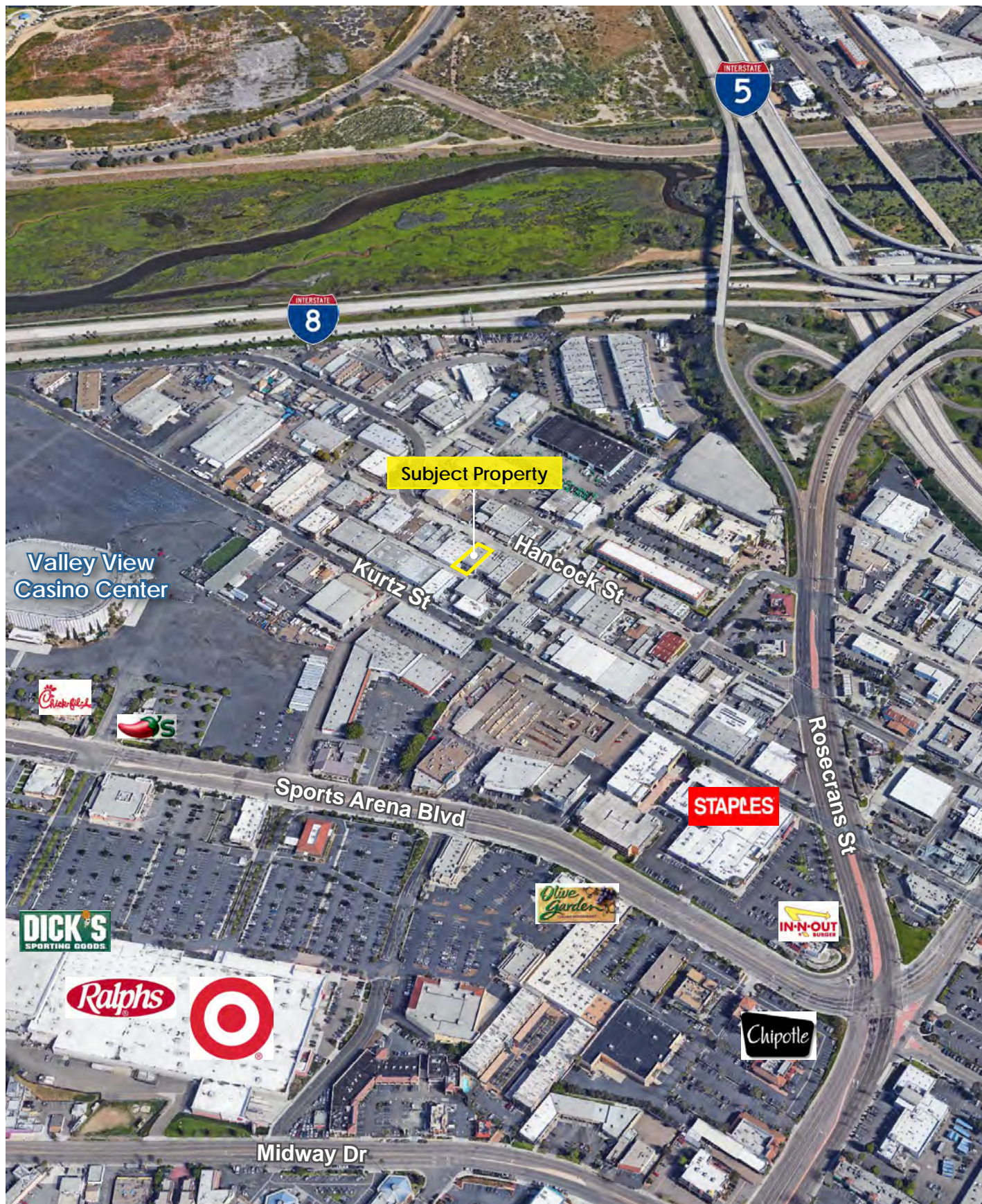
No warranty or representation is made to the accuracy of the foregoing information. Terms of sale or lease and availability are subject to change or withdrawal without notice.

FLOORPLAN



FOR LEASE

3421 Hancock St - San Diego, CA 92101



Lee & Associates Commercial Real Estate Services - 1900 Wright Place Ste 200 - Carlsbad, CA 92008

No warranty or representation is made to the accuracy of the foregoing information. Terms of sale or lease and availability are subject to change or withdrawal without notice.