

OFFICE SPACE FOR LEASE

126 N Jefferson Street
Milwaukee | WI

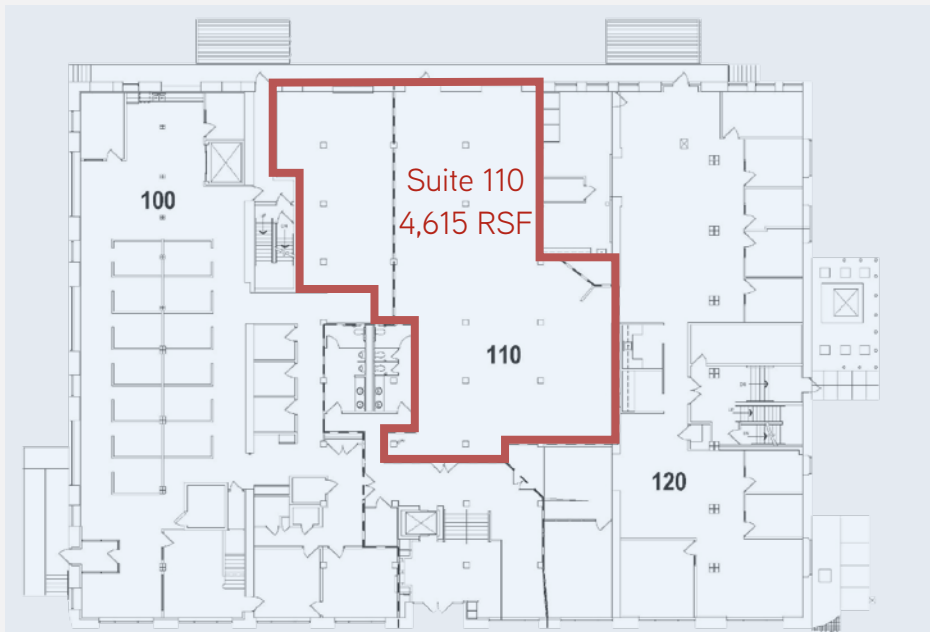
Warehouse No. 1



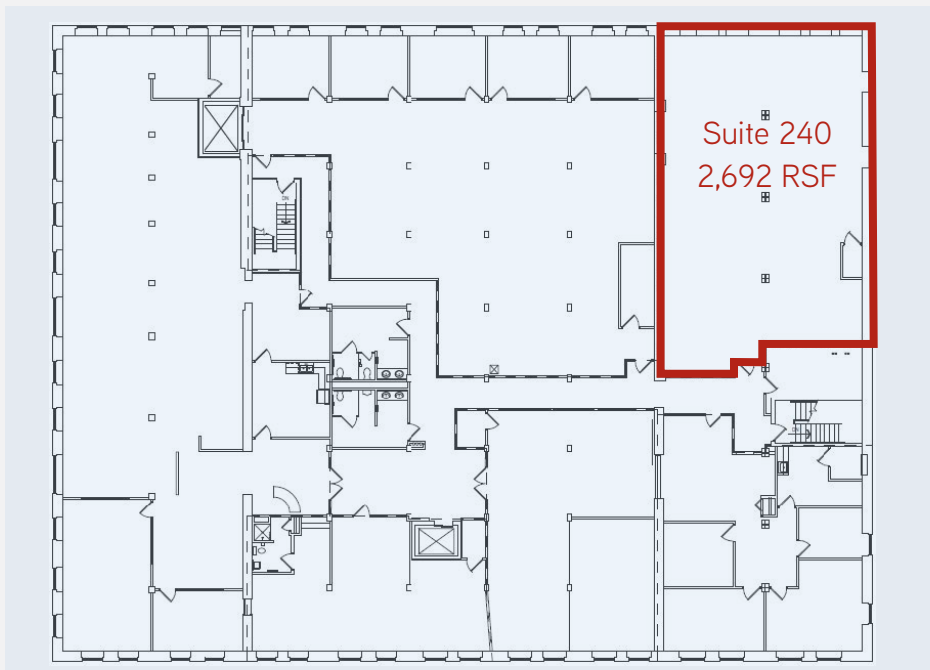
Colliers International
833 E Michigan Street | Suite 500
Milwaukee, WI 53202
P: +1 414 276 9500

DAN WROBLEWSKI
414 278 6813 (direct)
414 708 9533 (mobile)
dan.wroblewski@colliers.com

SAL STREHLOW
414 278 6846 (direct)
414 467 4296 (mobile)
sal.strehlow@colliers.com



FIRST FLOOR



SECOND FLOOR

BUILDING SPECIFICATIONS

Available Office Space:	7,307 RSF Total
Building Size:	74,640 SF
Stories:	4
Year Built:	1905
Parking:	1.00/1,000 RSF (\$75.00/Month)
CAM & Tax (Est.):	\$6.35/SF (Suite electrical & janitorial not included) *Suite 110: Gas is also seperately metered

\$12.00 - \$14.00
PSF NNN

PROPERTY HIGHLIGHTS

- Creative loft office spaces
- Exposed timber ceilings and columns
- Ample surface level parking adjacent to building
- Minutes from Downtown in the Historic Third Ward District



FOR LEASE 126 N Jefferson Street // Milwaukee // WI

colliers.com/wisconsin



DAN WROBLEWSKI

414 278 6813 (direct)

414 708 9533 (mobile)

dan.wroblewski@colliers.com

SAL STREHLOW

414 278 6846 (direct)

414 467 4296 (mobile)

sal.strehlow@colliers.com

This document has been prepared by Colliers International for advertising and general information only. Colliers International makes no guarantees, representations or warranties of any kind, expressed or implied, regarding the information including, but not limited to, warranties of content, accuracy and reliability. Any interested party should undertake their own inquiries as to the accuracy of the information. Colliers International excludes unequivocally all inferred or implied terms, conditions and warranties arising out of this document and excludes all liability for loss and damages arising there from. This publication is the copyrighted property of Colliers International and/or its licensor(s). ©2017. All rights reserved.

Colliers International
833 E Michigan Street | Suite 500
Milwaukee, WI 53202
P: +1 414 276 9500

