

1706 FLEET STREET, BALTIMORE, MD 21231

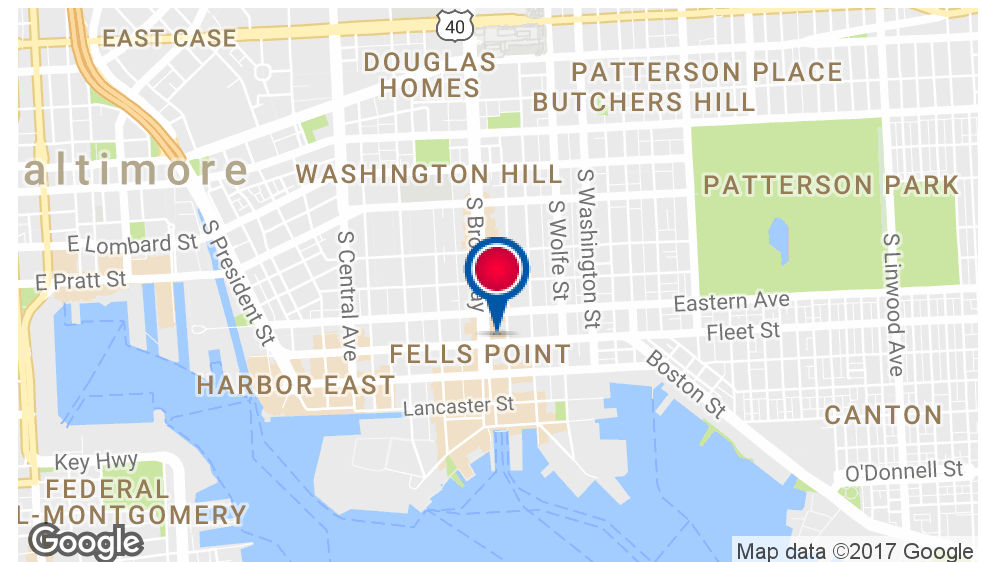
FELLS POINT RETAIL

Executive Summary



PROPERTY HIGHLIGHTS

- 700 +/- sq. ft. of prime storefront retail/office available for lease
- Located in Historic Fells Point in chic boutique area, just off Broadway
- Close proximity to Waterfront, Water Taxi stop and public transportation
- Perfect for use as a specialty salon, florist, retail store or personal office space for an insurance agent, attorney, accountant, etc.
- Public street parking



John M. Haas

410.435.4004 x257

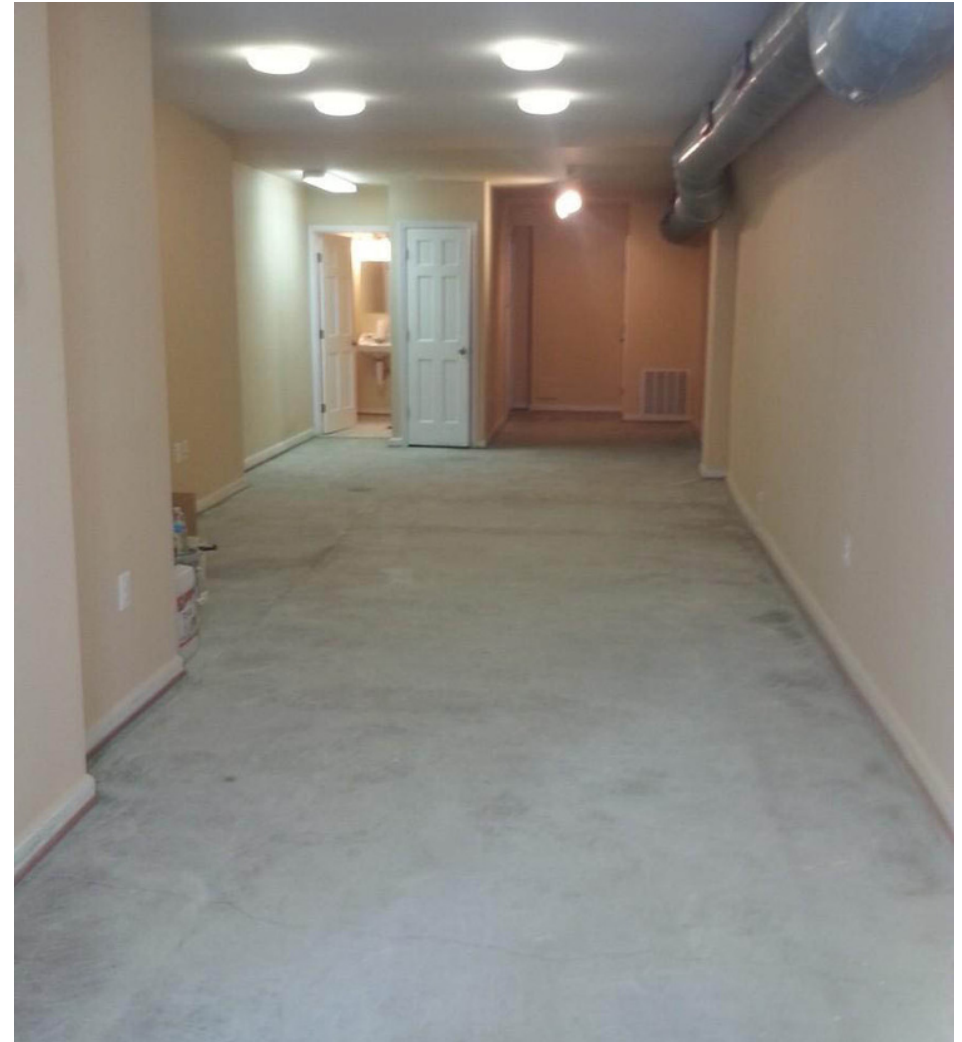
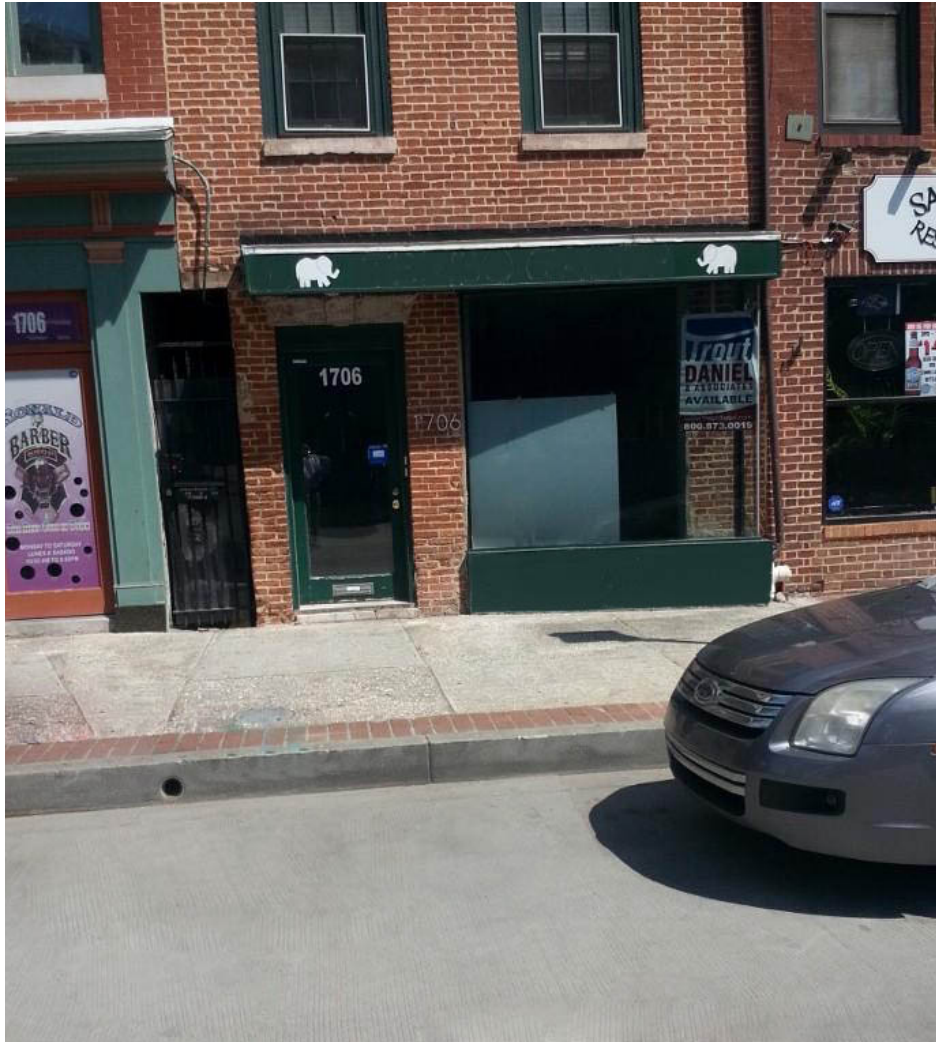
jhaas@troutdaniel.com

1706 FLEET STREET, BALTIMORE, MD 21231

FELLS POINT RETAIL



Additional Photos



John M. Haas

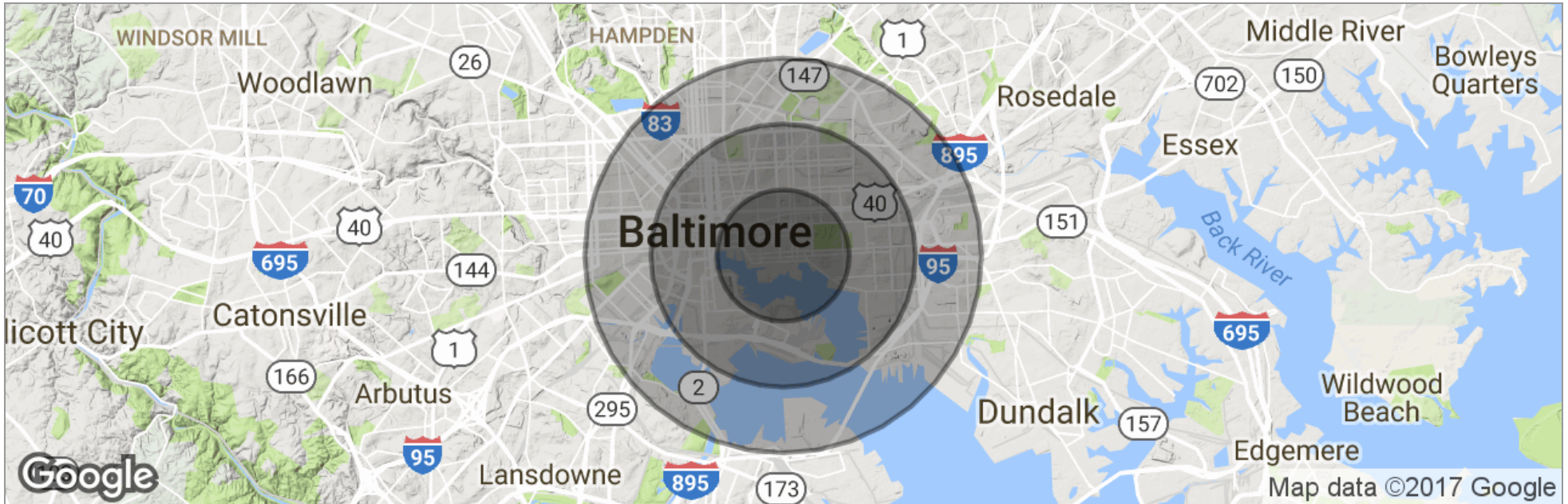
410.435.4004 x257

jhaas@troutdaniel.com

1706 FLEET STREET, BALTIMORE, MD 21231

FELLS POINT RETAIL

Demographics Map



	1 Mile	2 Miles	3 Miles
Total Population	31,618	128,144	221,008
Population Density	10,064	10,197	7,817
Median Age	32.7	33.4	33.6
Median Age (Male)	34.1	33.3	32.5
Median Age (Female)	31.0	33.7	34.1
Total Households	13,911	52,536	89,435
# of Persons Per HH	2.3	2.4	2.5
Average HH Income	\$80,079	\$66,360	\$58,324
Average House Value	\$332,281	\$253,377	\$240,269

* Demographic data derived from 2010 US Census

John M. Haas

410.435.4004 x257

jhaas@troutdaniel.com