

# RENAISSANCE TOWNE CENTER OFFICE

1509 – 1560 South Renaissance Towne Drive, Bountiful, Utah 84010



BUILDING 1560

RENAISSANCE PLACE  
MAIN LEVEL - SHELL CONDITION  
READY FOR IMPROVEMENTS

# FOR LEASE

## PROPERTY FEATURES

- 1,496 – 9,115 SF available
- Modern finishes
- Office or medical design
- Improvements and allowances available
- Building signage available
- Ample parking including covered garage
- Prime hard-corner suite available
- Professional co-tenancy
- Excellent surrounding amenities

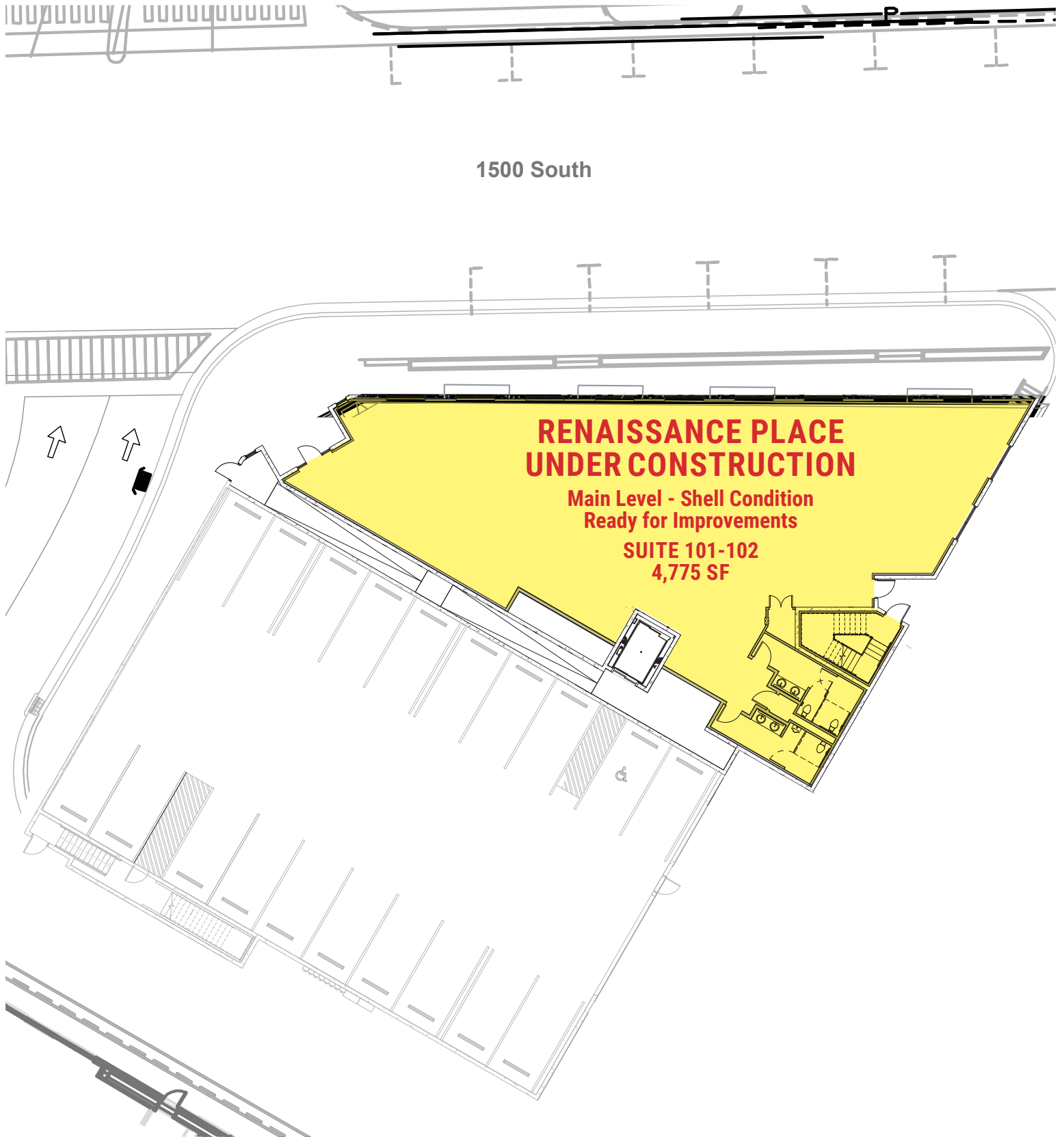
FOR MORE  
INFORMATION  
CONTACT

**CHRIS FALK, CCIM, SIOR**  
801.416.1024  
chris.falk@ngkf.com

**BRAXTON WILLIE, CCIM**  
801.416.1050  
braxton.willie@ngkf.com

# RENAISSANCE TOWNE CENTER OFFICE

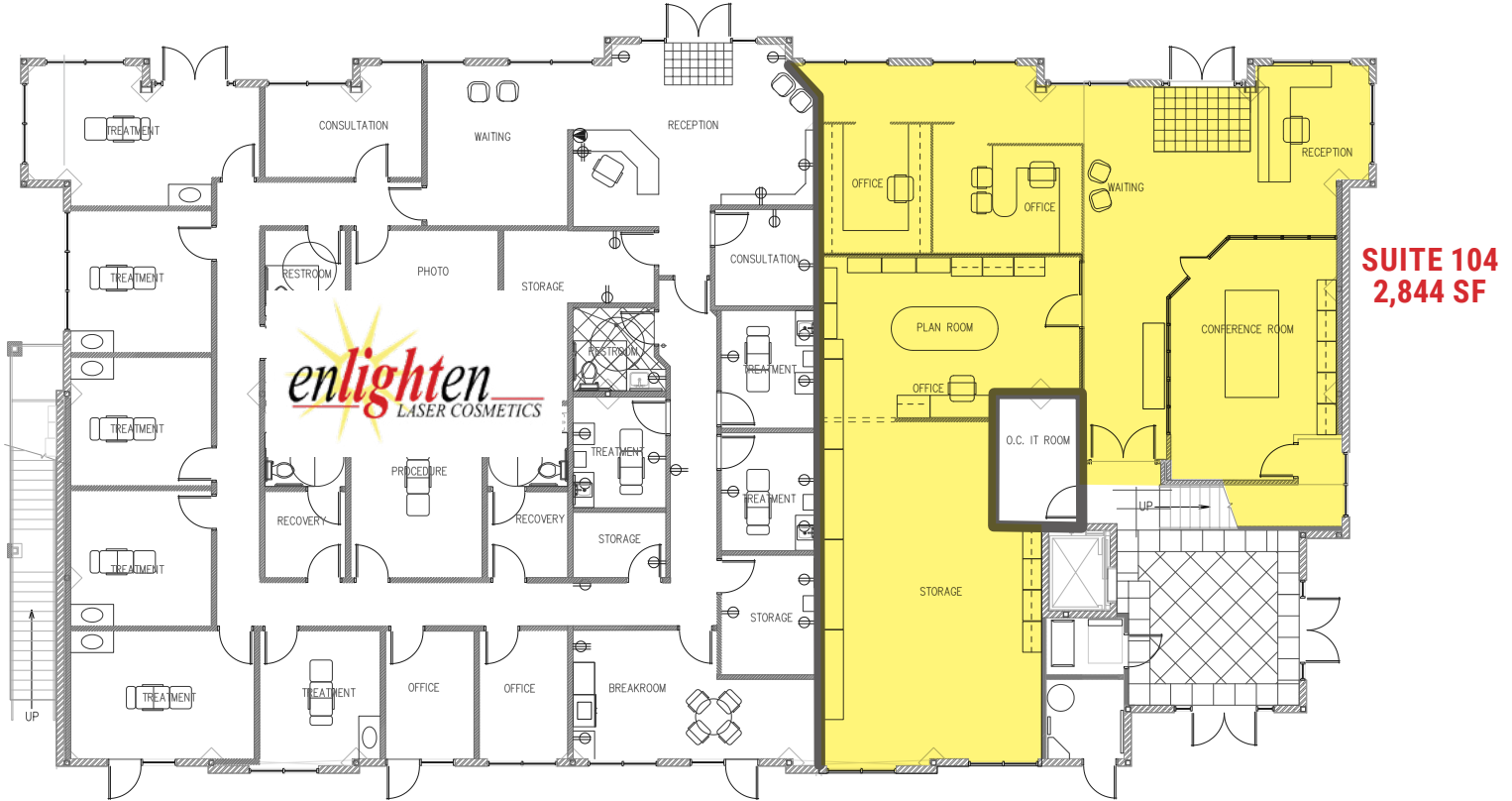
1509 – 1560 South Renaissance Towne Drive, Bountiful, Utah 84010



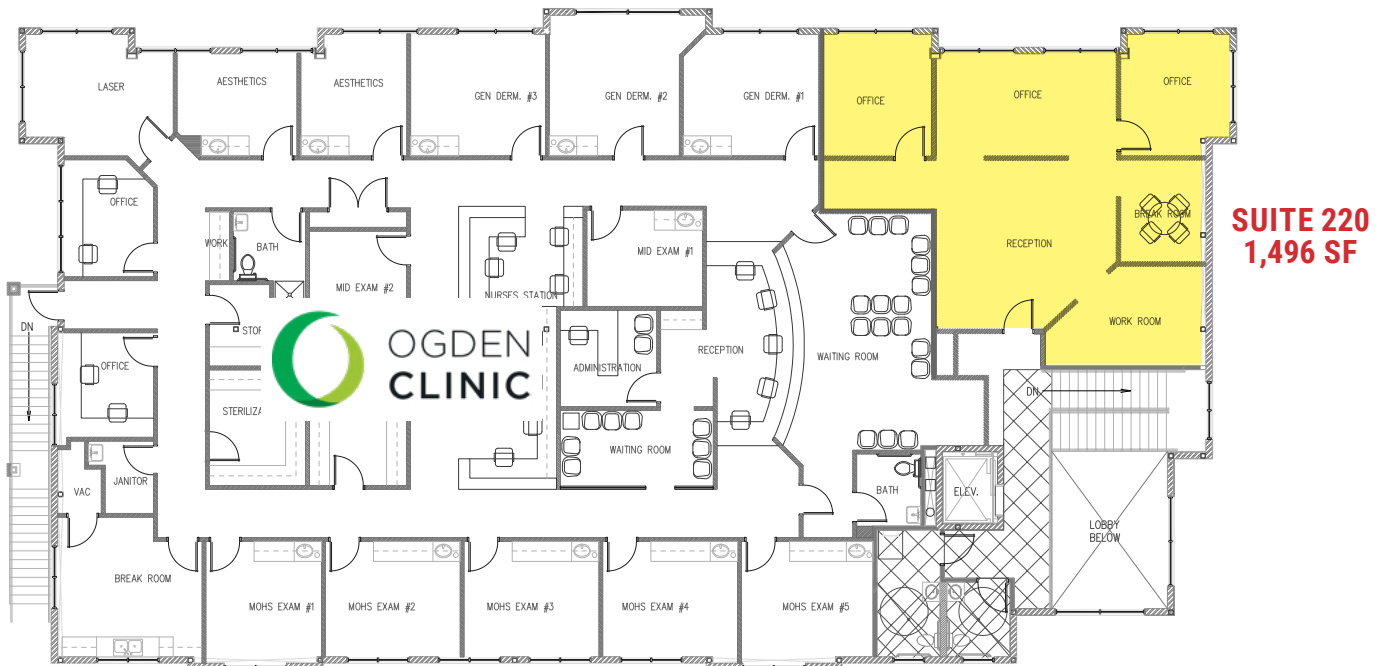
# RENAISSANCE TOWNE CENTER OFFICE

1509 – 1560 South Renaissance Towne Drive, Bountiful, Utah 84010

## BUILDING 1560 – MAIN LEVEL



## BUILDING 1560 – SECOND LEVEL



# RENAISSANCE TOWNE CENTER OFFICE

1509 – 1560 South Renaissance Towne Drive, Bountiful, Utah 84010



# RENAISSANCE TOWNE CENTER OFFICE

1509 – 1560 South Renaissance Towne Drive, Bountiful, Utah 84010

