

## Syracuse Inn & Suites

130 N. 30th Road, Syracuse, NE 68446

### Property Features

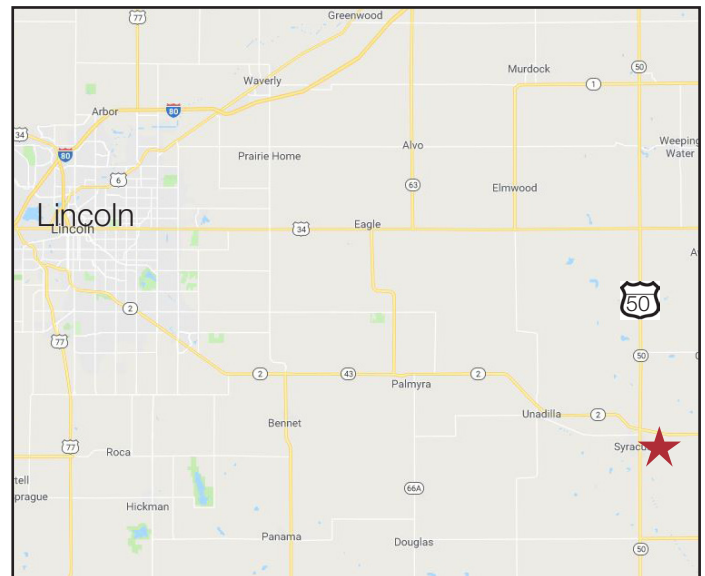
- 74 rooms
- Building size: 38,648 sq. ft.
- Lot size: 3.18 acres
- Year built: 1999
- Parking: paved, on-site
- Occupancy Rate: 21.3%
- Average Daily Rate: \$51.84
- Rev Par: \$11.03
- Room Revenue: \$297.861
- EBITDA: \$33,846

### Pricing

- List price: \$1,000,000 (\$13,513.51/key)
- 2018 Real Estate Taxes: \$56,000
- Financials available upon request

### Location

- Located at the intersection of Highways 2 and 50, 35 miles southeast of Lincoln, NE
- Area neighbors include: Godfather's Pizza, Love's Travel Stop, Kiem Farm Equipment, Syracuse High School



### Dale Zomer

Senior Vice President

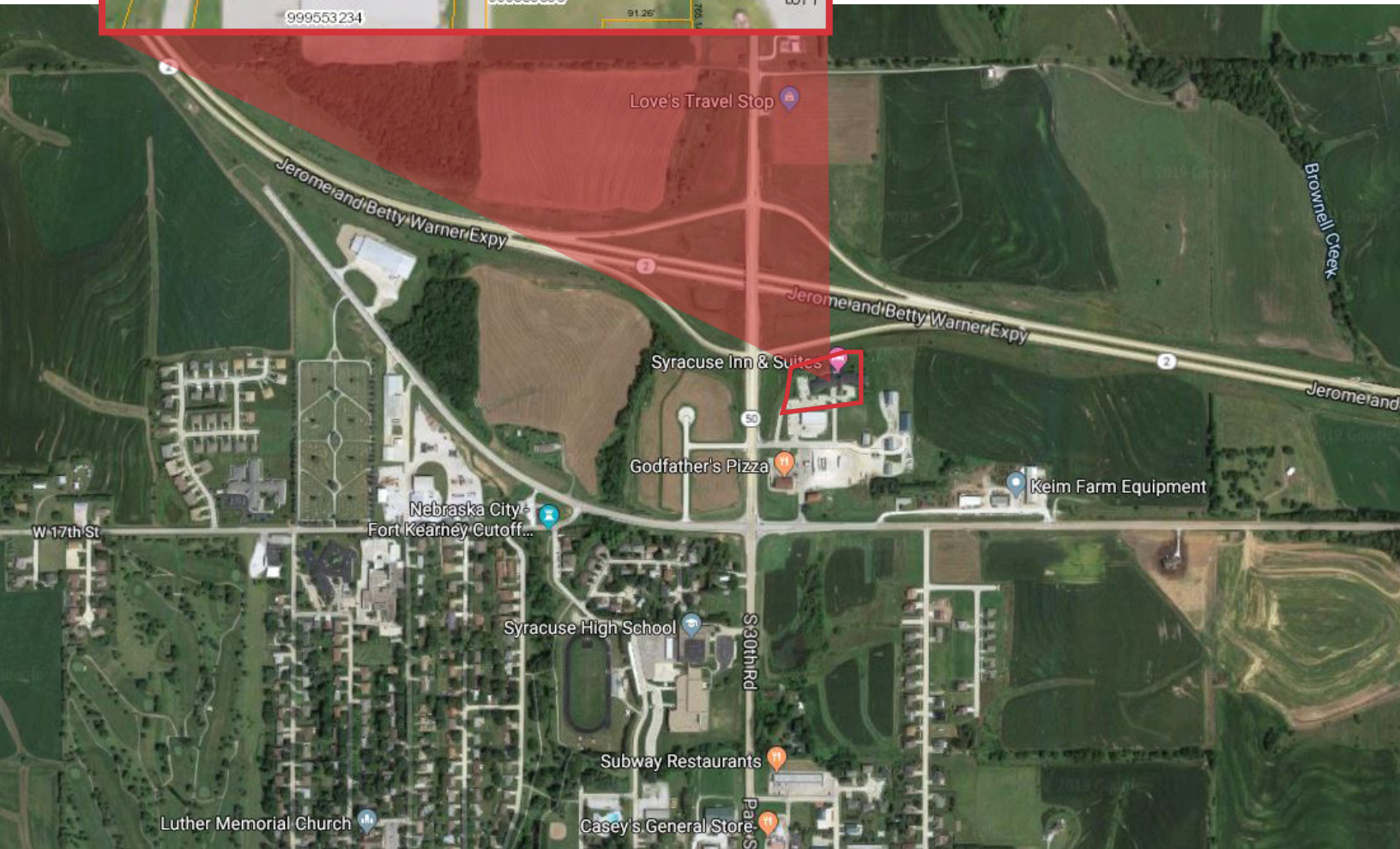
+1 605 444 7117 direct

+1 605 351 1218 mobile

dzomer@naisiouxfalls.com

For Sale

# 74 Room Hotel



For Sale

74 Room Hotel

