

# EUROPA CENTER

europacenterchapelhill.com



**AVISON  
YOUNG**

Gary Hill, CCIM  
Senior Associate  
919.913.1116  
gary.hill@avisonyoung.com

 **BEST  
MANAGED  
COMPANIES**

Platinum  
member

## About Europa Center

The Europa Center is a five-story, Class A office building located directly off Highway 15-501, convenient to Downtown Chapel Hill and Durham and minutes from I-40 and the rest of the Triangle. Known as a Chapel Hill business landmark, the Europa Center offers tenants an array of amenities including an on-site cafe, tri-level covered parking deck, a three-story atrium lobby for dining and casual meetings, lush landscaping and outdoor seating, and on-site security, property management and leasing. The lobbies and common areas were renovated in 2019.



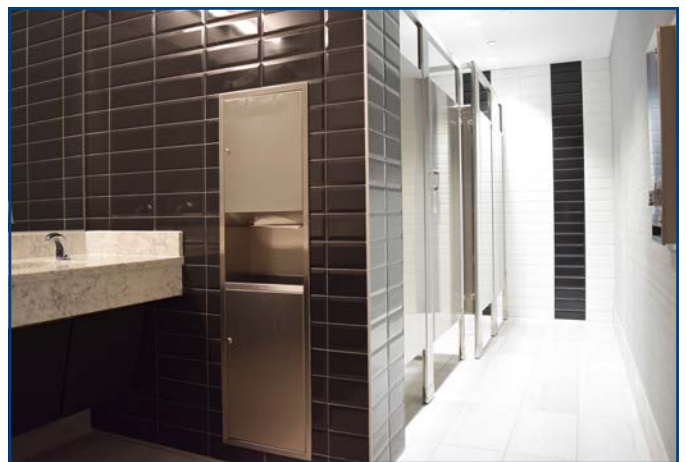

---

Type	Class A Office Building
Building Size	183,164 sf
Location	Directly off Hwy. 15-501 and less than one mile to I-40 in Chapel Hill
Rental Rate	\$23.95/sf, Full Service
Available	1,727 sf - 2,988 contiguous sf

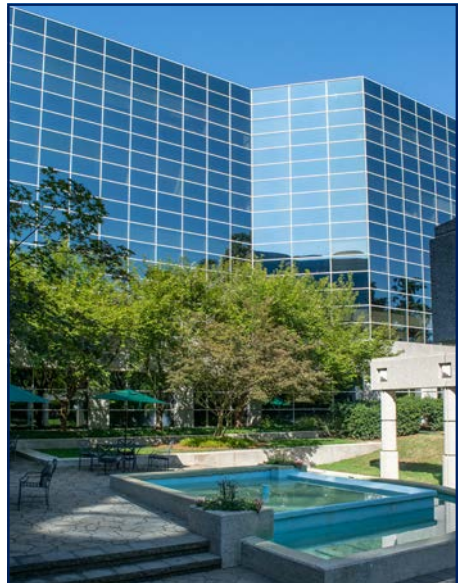
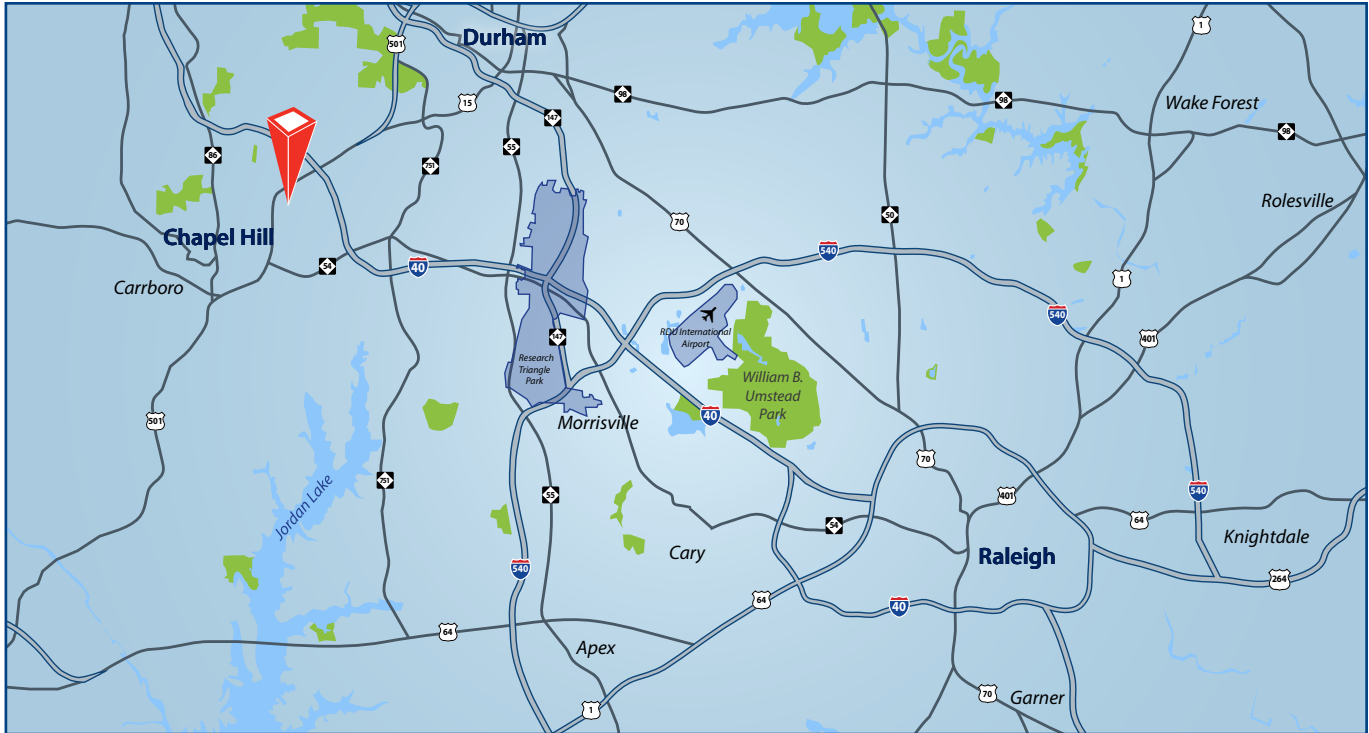
---

## Recent Renovations

- Updated atrium with new seating and LED lighting
- New multi-person workstation in atrium
- Custom laser-cut wood panels on stone columns
- New custom ring light fixture in atrium
- New outside patio furniture
- New carpet and wall coverings in corridors
- Addition of art pieces
- Remodeled restrooms with modern tile, new lighting and countertops



## Location



## Amenities

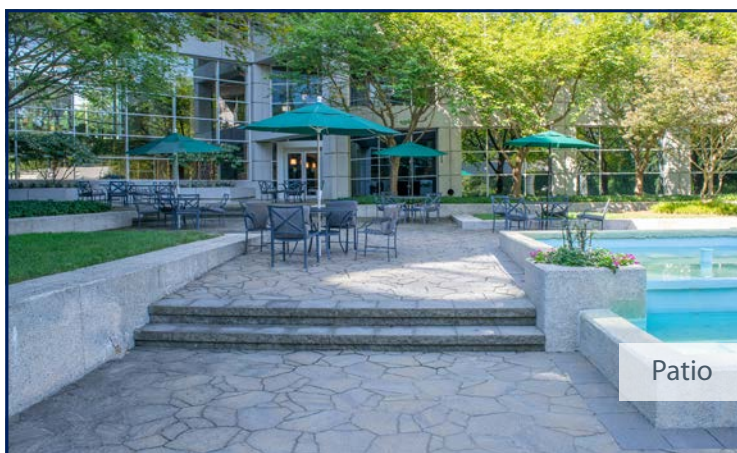
- On-site café – Sutton's in the Atrium
- Fully functional shower and changing facility
- On-site fitness classes, including yoga and pilates
- Tri-level covered parking deck with security cameras
- Three-story atrium lobby, patio area and wi-fi access
- 24/7 building access with after-hour entry available by access card
- On-site security, property management and maintenance
- Lush landscaping with fountain, patio seating and wooded picnic area
- Service entrance with loading dock and service elevator
- Fed-Ex and UPS on-site pick up and suite delivery



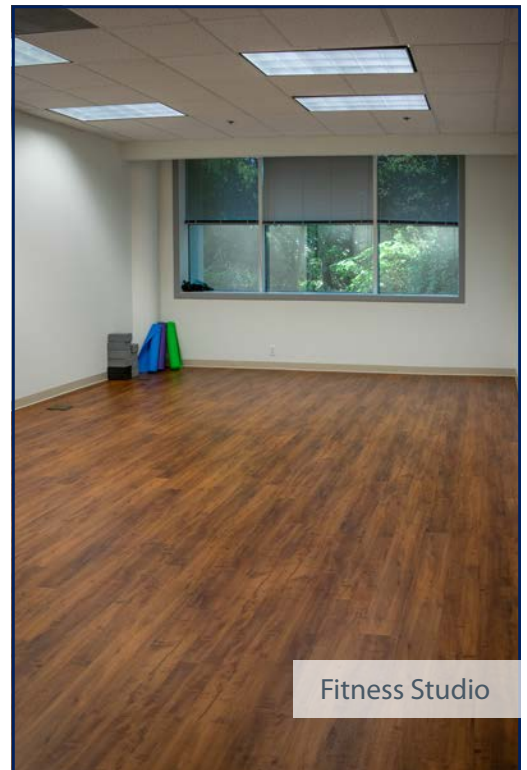
Sutton's in the Atrium



Tri-level Parking Deck



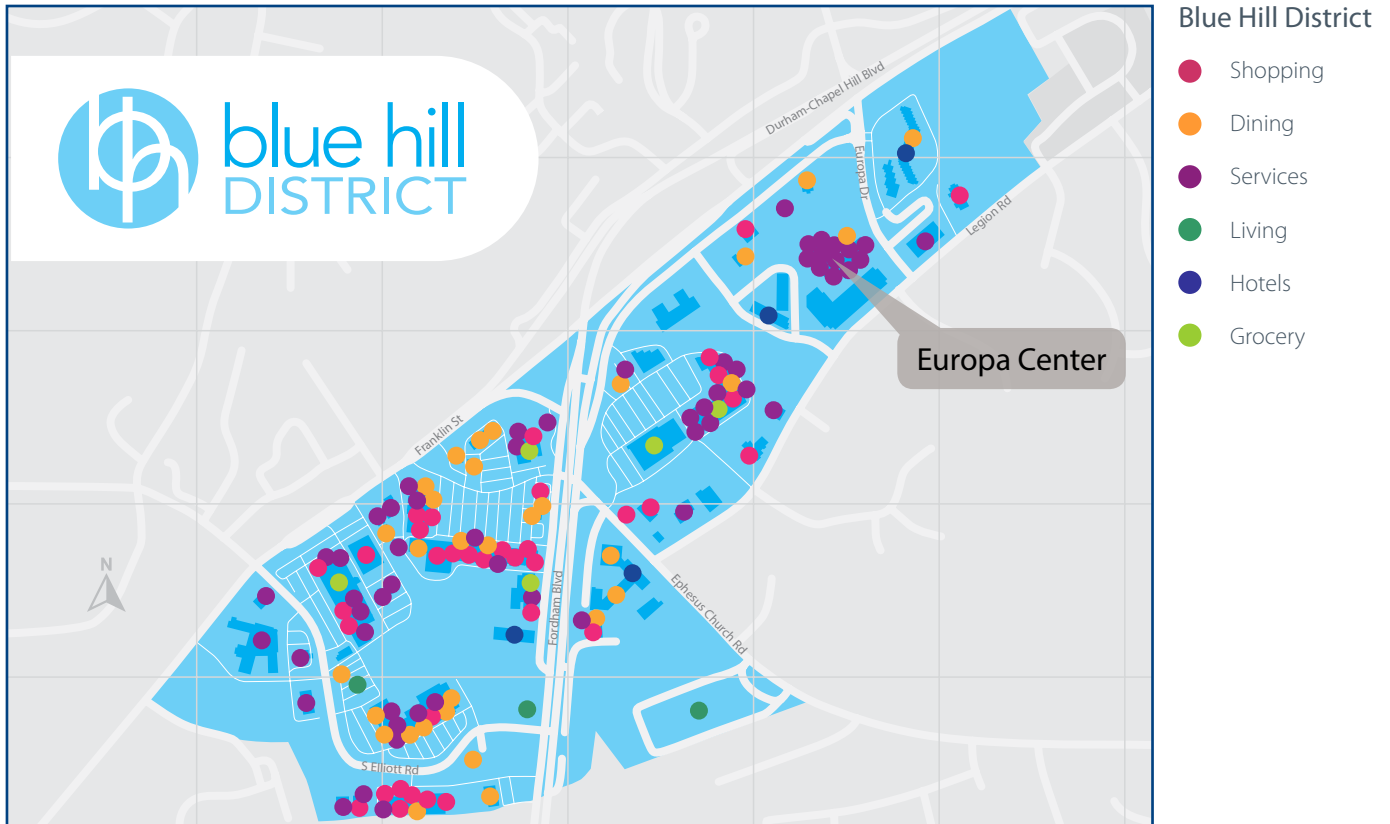
Patio



Fitness Studio

## Blue Hill District

Europa Center is located within the Blue Hill district, Chapel Hill's newest mixed-use destination. There is a diverse assortment of amenities to be explored in the district including casual family eateries, boutiques, salons and spas, clothing and lifestyle retailers, grocery stores and medical and professional services. Listed below are just a few of the businesses located in the district. For a full directory, visit [BlueHillDistrict.com](http://BlueHillDistrict.com)

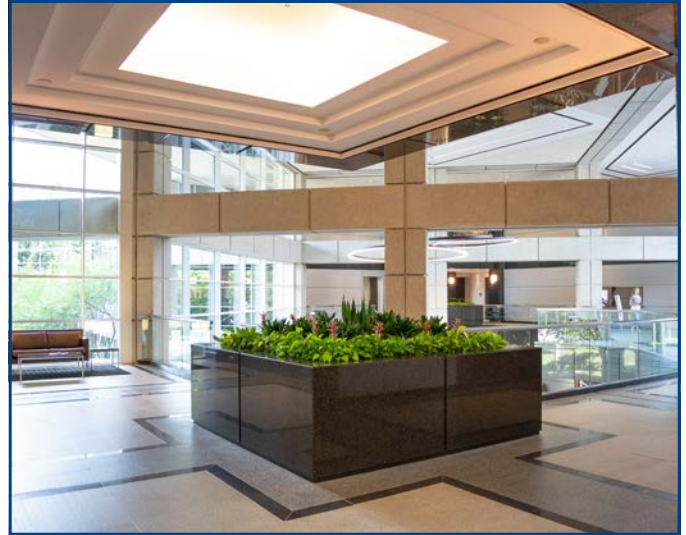


## Available Spaces

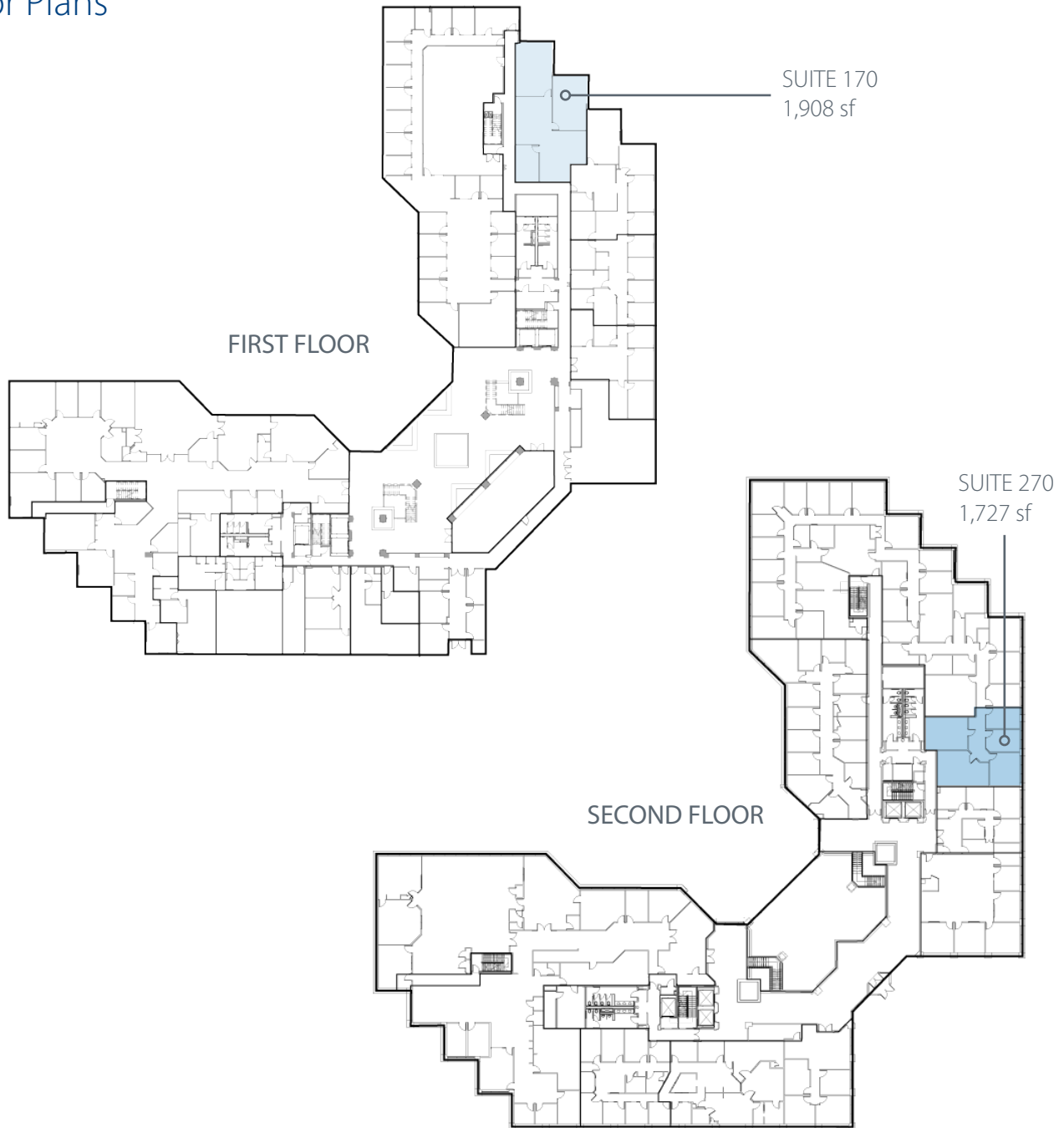
Suite 170:	1,908 sf	Suite 430:	2,714 sf
Suite 270:	1,727 sf	Suite 500:	1,782 sf
Suite 360:	1,914 sf	Suite 555:	2,988 sf

Europa Center offers Full Service leases, which include all utilities and nightly janitorial at landlord expense. Tenant is responsible for telephone and internet services.

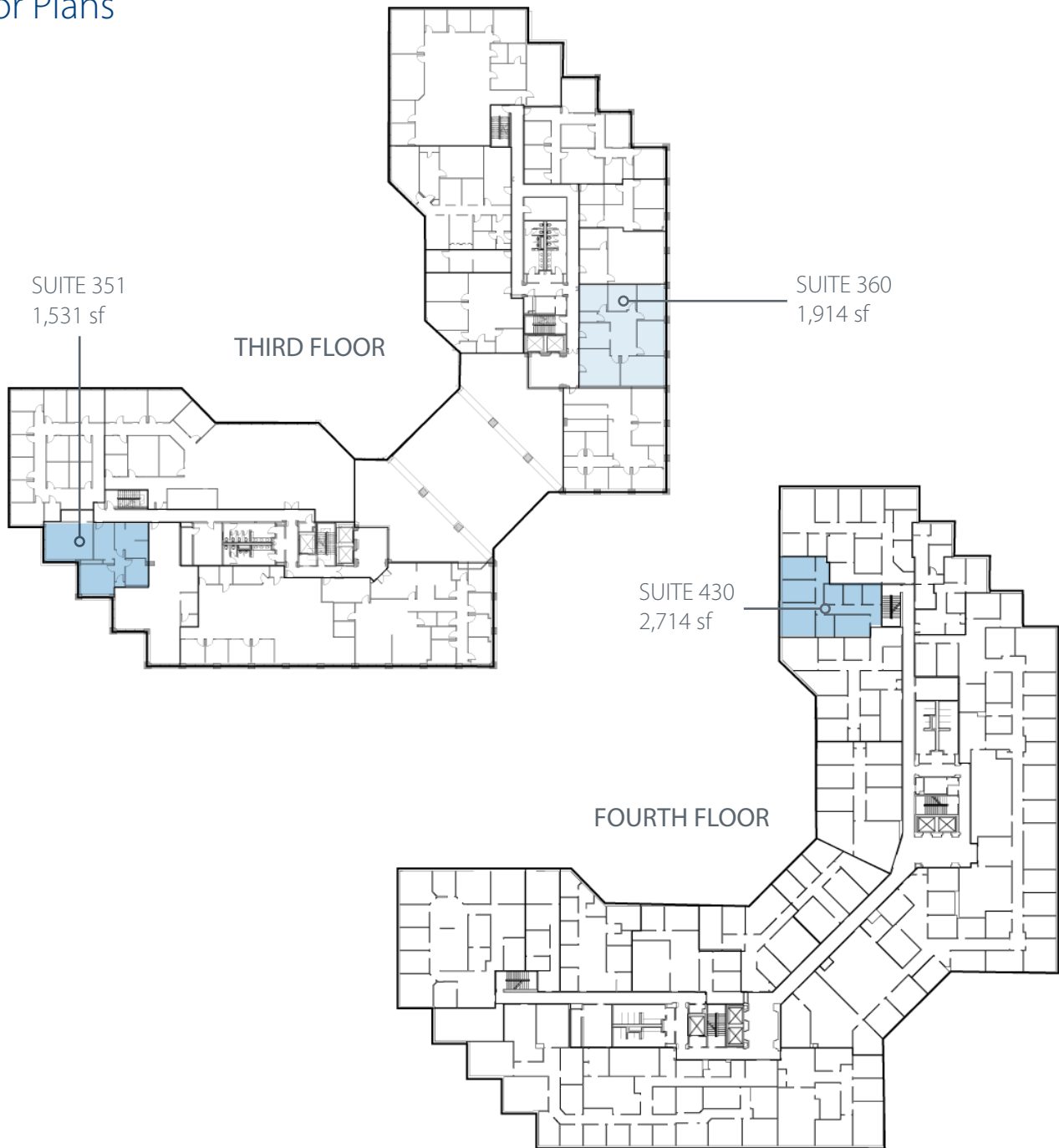
Rental Rate - \$23.95/sf, Full Service



## Floor Plans



## Floor Plans





## Floor Plans

