

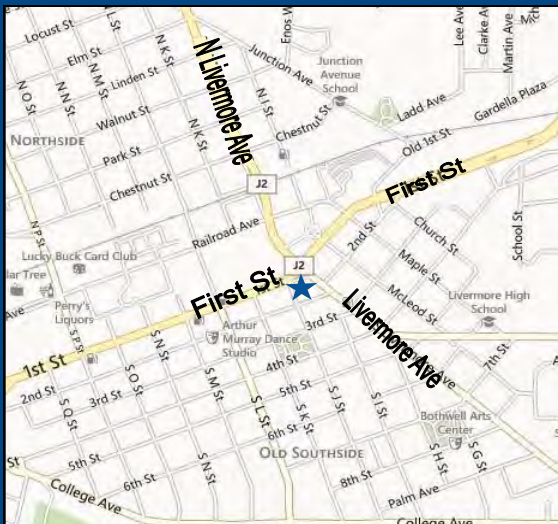


**THE  
“L. SCHENONE” BUILDING  
2219 FIRST STREET  
LIVERMORE,  
CALIFORNIA**

**Office/Retail Space In The Historic  
“L. Schenone” Building  
In the Heart of Downtown Livermore**



*Flagpole Plaza, Downtown Livermore*



**PROPERTY INFORMATION:**

- Second Floor Office/Retail Space For Lease
- 3,060± SF Available
- Large Windows Along Front of Building
- Located At S. Livermore and First Street– the Main Intersection of Downtown Livermore
- Retail Co-Tenants Include The Beer Baron and Demetri’s Taverna
- \$3.00 PSF, NNN (40¢ NNN’s)

**ESTIMATED DEMOGRAPHICS:**

	<u>1 MILE</u>	<u>3 MILE</u>	<u>5 MILES</u>
POPULATION:	20,518	77,810	100,713
AVG. HH INCOME:	96,204	\$128,059	\$136,895

**FOR MORE INFORMATION CONTACT:**

**MEACHAM/OPPENHEIMER, INC.**  
CORFAC INTERNATIONAL  
8 No. San Pedro St., Suite 300  
San Jose, California 95110  
Tel: 408.378.5900  
Fax: 408.378.5903  
www.moinc.net

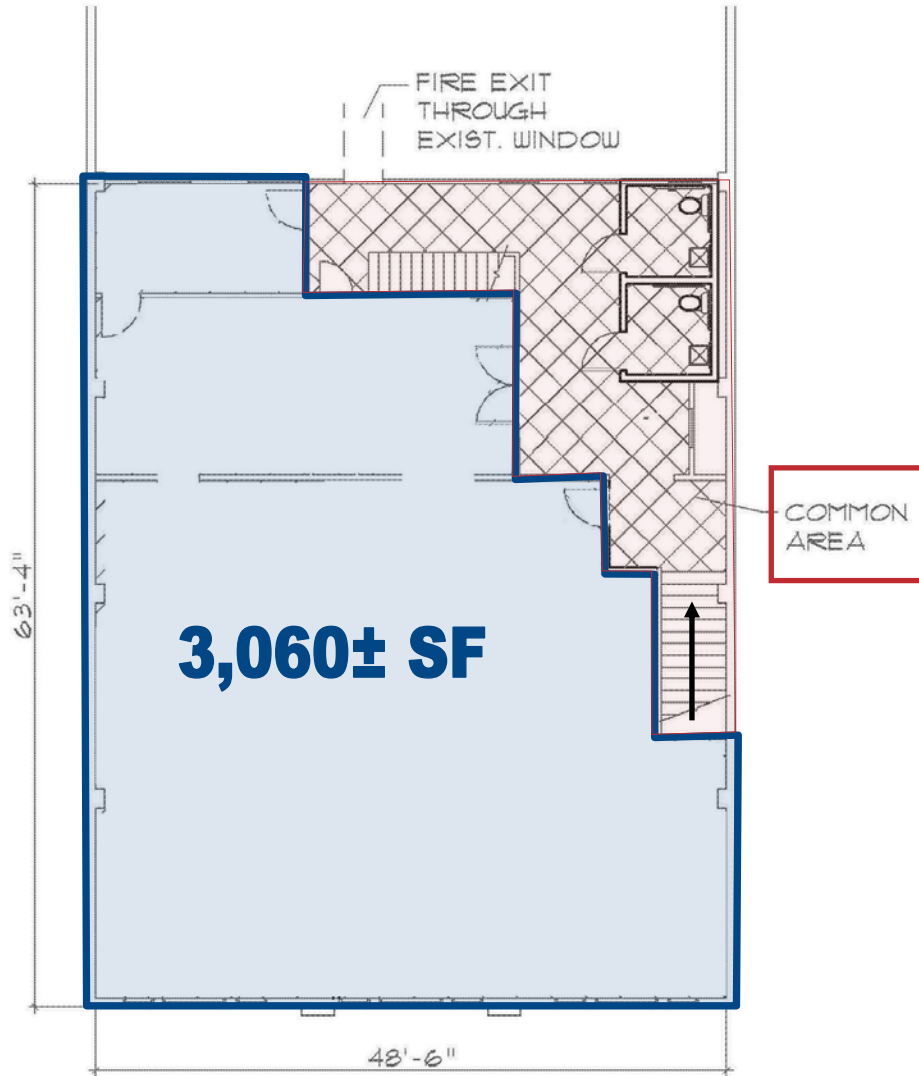
**Michael Messinger**  
Lic. #00879292  
[mike@moinc.net](mailto:mike@moinc.net)  
**(408) 378-5900**

**Fernando Cuebas**  
Lic. #01168597  
[fcuebas@newmarkccarey.com](mailto:fcuebas@newmarkccarey.com)  
**(925) 460-9290**

Newmark  
Cornish & Carey



L. SCHENONE BUILDING  
2219 FIRST STREET  
LIVERMORE, CALIFORNIA  
2ND FLOOR PLANS



Second Floor

1/16" = 1'-0"

MEACHAM/OPPENHEIMER, INC.  
CORFAC INTERNATIONAL  
8 No. San Pedro St., Suite 300  
San Jose, California 95110  
Tel: 408.378.5900  
www.moinc.net

Michael Messinger  
Lic. #00879292  
[mike@moinc.net](mailto:mike@moinc.net)  
(408) 378-5900

Fernando Cuebas  
Lic. #01168597  
[fcuebas@newmarkccarey.com](mailto:fcuebas@newmarkccarey.com)  
(925) 460-9290