

3801

FOR LEASE: 106,848 SQ. FT.

3801 Centrella Street, Franklin Park IL

Centrella St.



Index

04	Site Overview
06	Features
07	Site Plan
10	Driving Distances
12	Contact Information

Site Overview

Located on 7.14 acres of land, 3801 Centrella Street is a Class A Facility new construction building with 106,848 SQ. FT available for lease.

Premium O'Hare submarket location across the street from O'Hare International Airport and less than 1 mile to I-294, I-90 interchange.

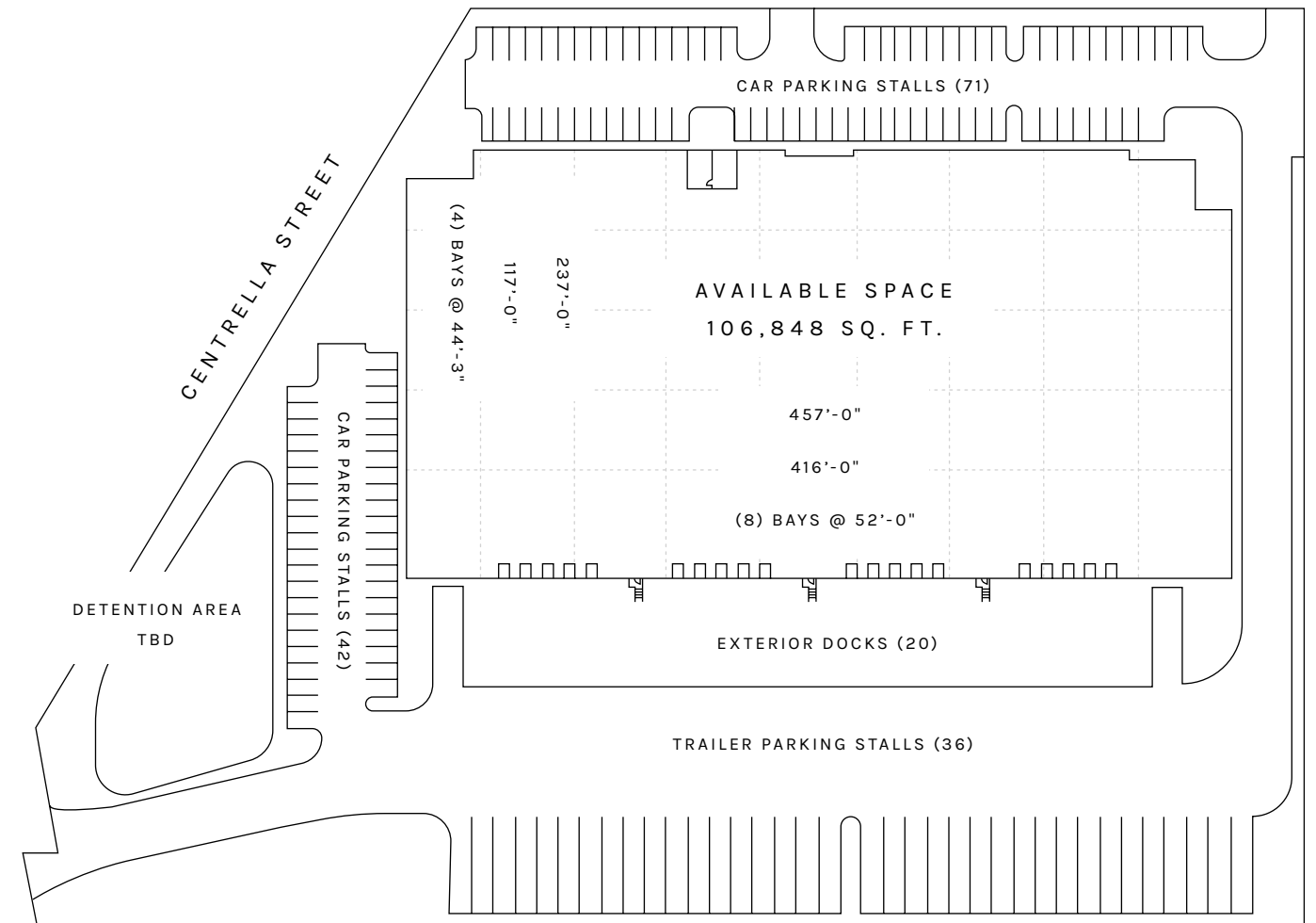


Features

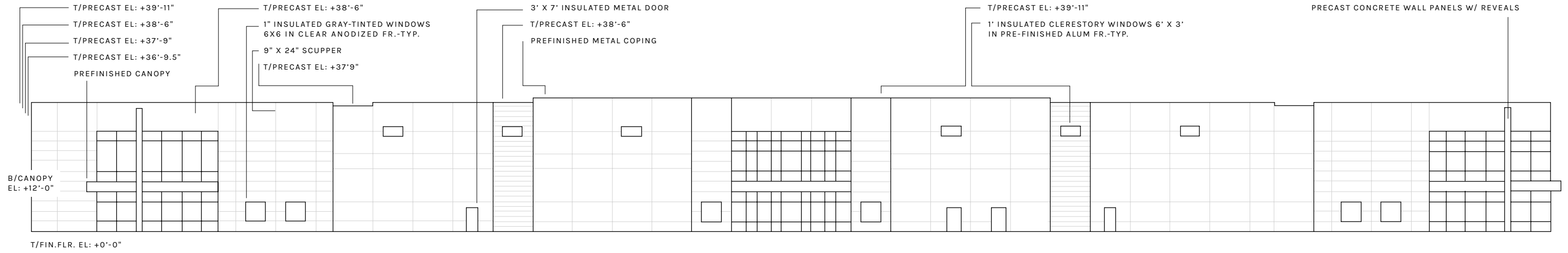
AVAILABLE	106,848 SQ. FT.
ACRES	7.14 Acres
OFFICE	To Suit
CEILING HEIGHT	32' clear height
LOADING	20 exterior docks, 2 drive-in doors (expandable)
SPRINKLERS	ESFR
CAR PARKING	113 spaces
TRAILER PARKING	36 trailer stalls
SALE PRICE	STO
LEASE RATE	STO
CONSTRUCTION	Pre-Cast
OTHER	Low Cook County 6B taxes

Site Plan

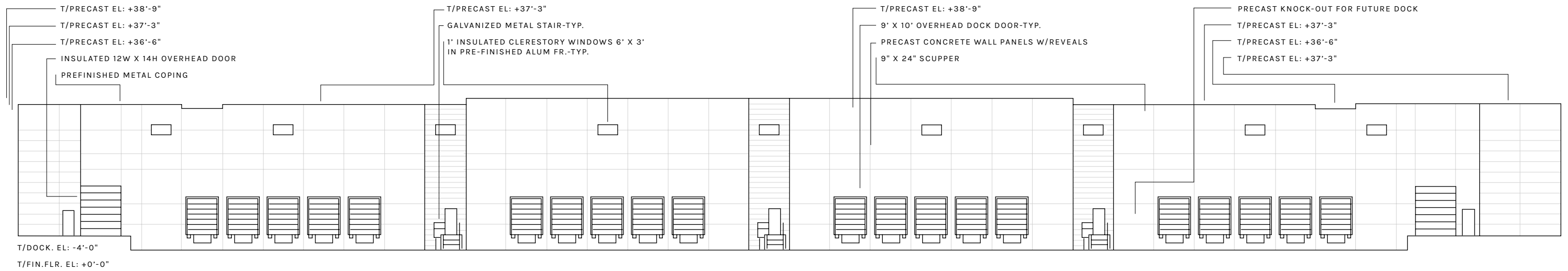
106,848 SQ. FT. AVAILABLE / 7.14 ACRES TOTAL



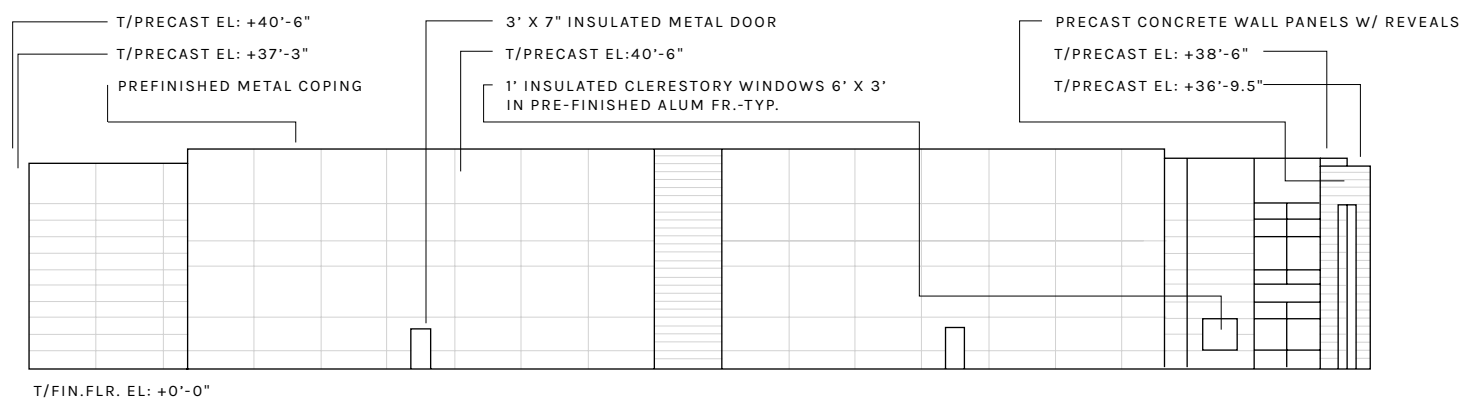
WEST ELEVATION



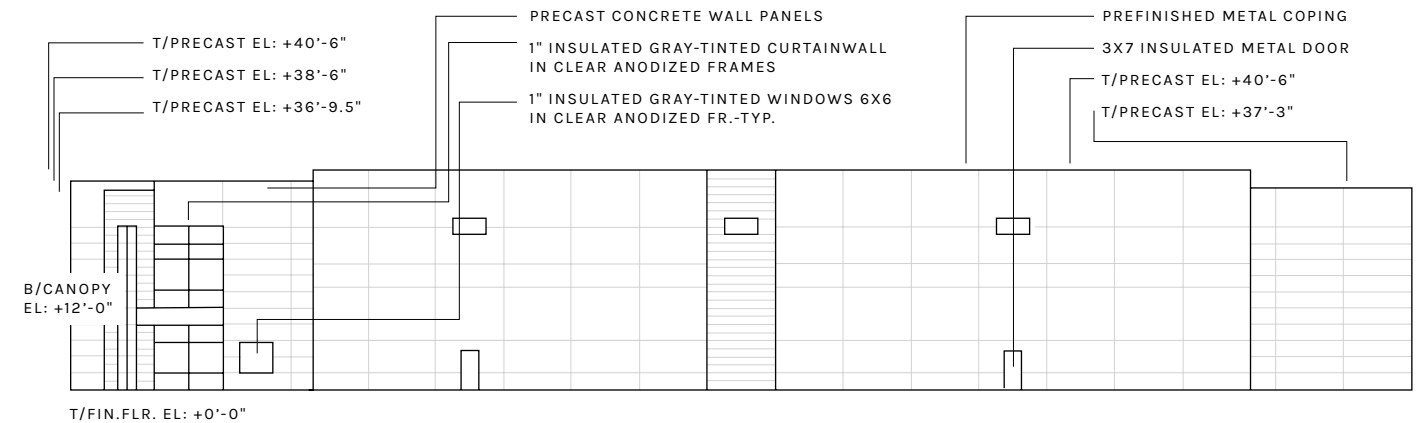
EAST ELEVATION



NORTH ELEVATION

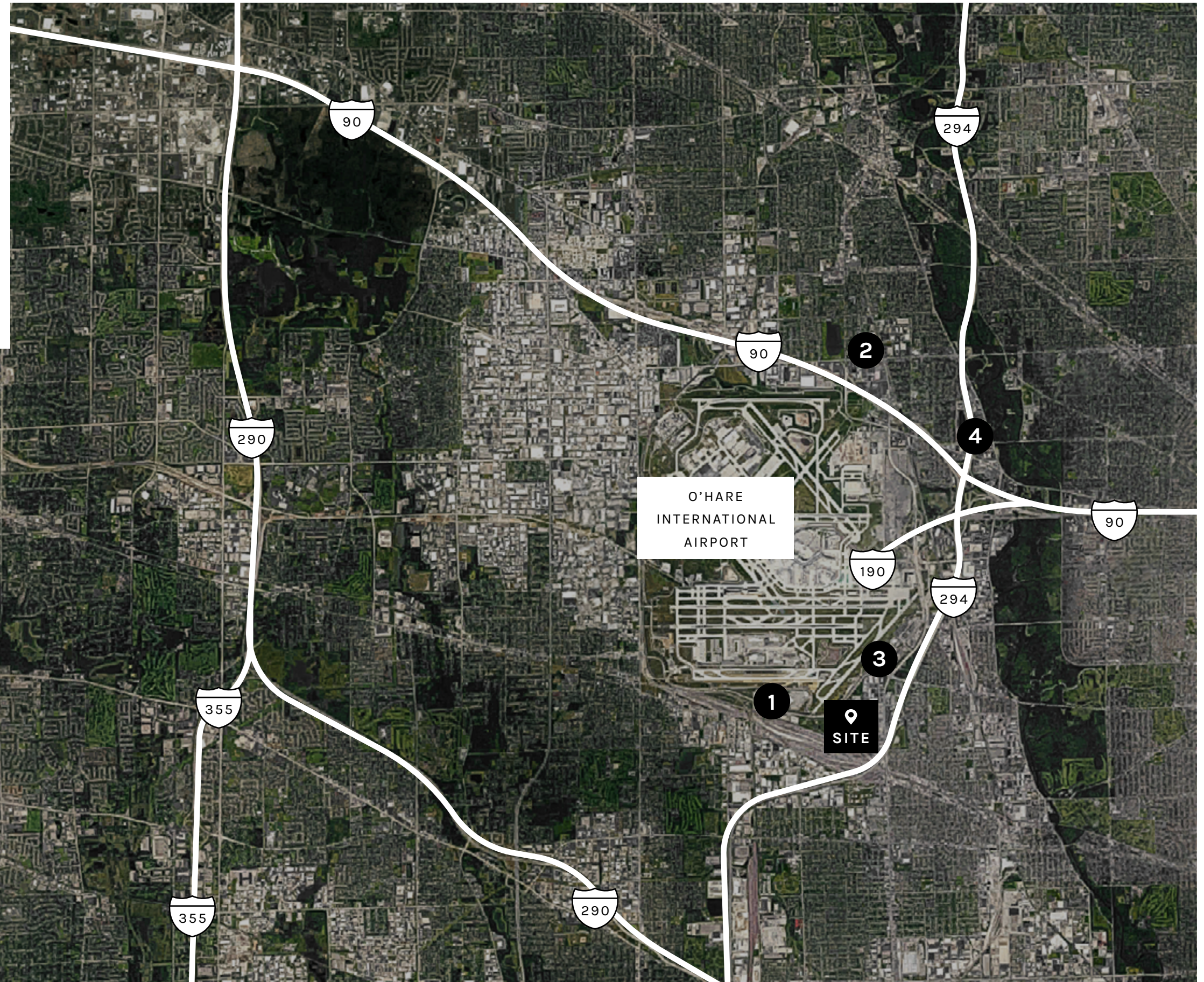


SOUTH ELEVATION



Driving Directions

- 1** O'HARE SOUTH CARGO/TAFT ROAD
2.43 miles | 8 minutes
- 2** O'HARE NORTH CARGO
6.8 miles | 17 minutes
- 3** I-294/IRVING PARK ROAD
0.8 miles | 3 minutes
- 4** I-90 VIA MANNHEIN ROAD
3.2 miles | 7 minutes



Contacts

Matthew J. Stauber, SIOR

847 698 8236

matthew.stauber@colliers.com

Thomas C. Rodeno

847 698 8231

tom.rodno@colliers.com

