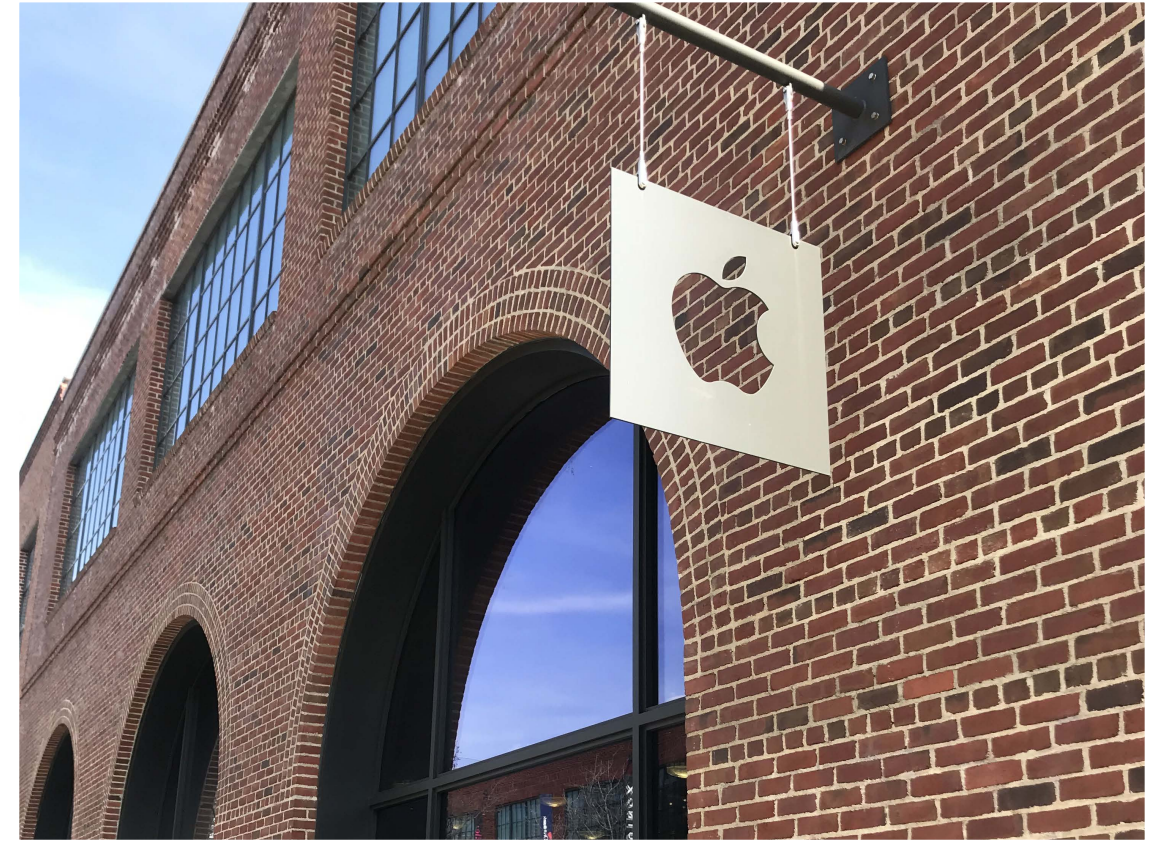




108 N.
7TH STREET
WILLIAMSBURG | BROOKLYN



THE 108 N. 7TH STREET NEIGHBORHOOD



APPLE | SHAKE SHACK | SANDRO
CREDO | VANS | SLT | LE LABO
URBAN OUTFITTERS | SOULCYCLE
MADEWELL | DRYBAR | EQUINOX
BUCK MASON | MAJE | MUJI
MARINE LAYER | LULULEMON
WARBY PARKER | EVERLANE

PROPERTY DETAILS

SIZE:

GROUND - 1,404 SF
SECOND - 1,131 SF
LOWER - 1,404 SF

POSSESSION:

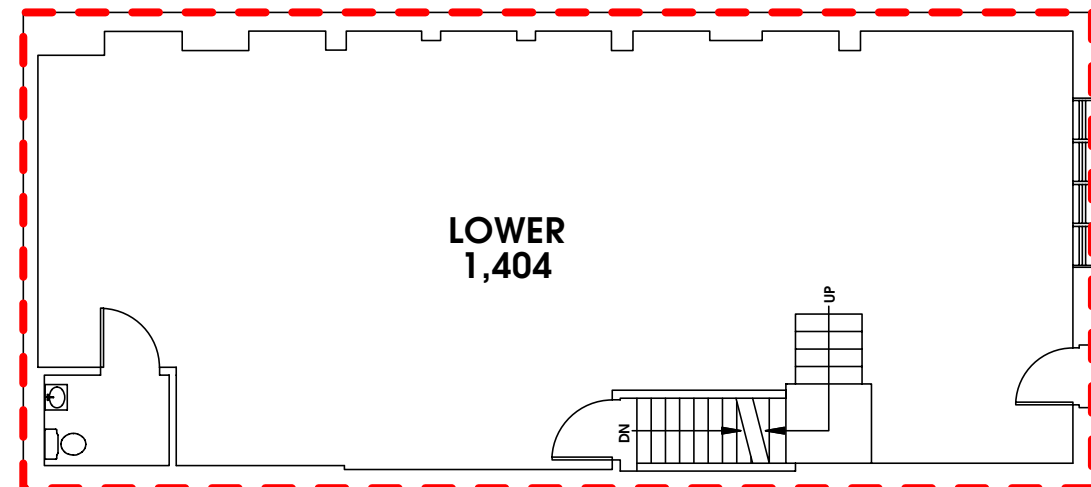
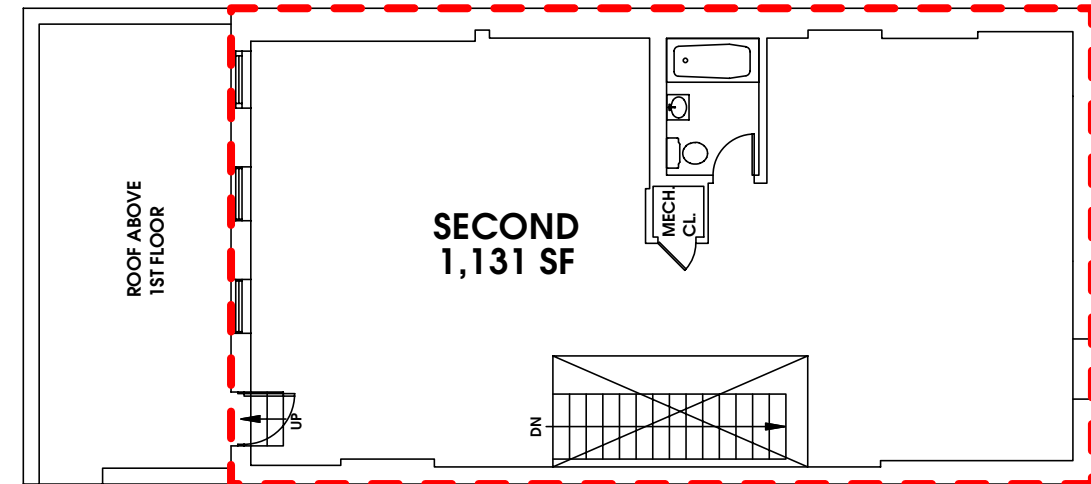
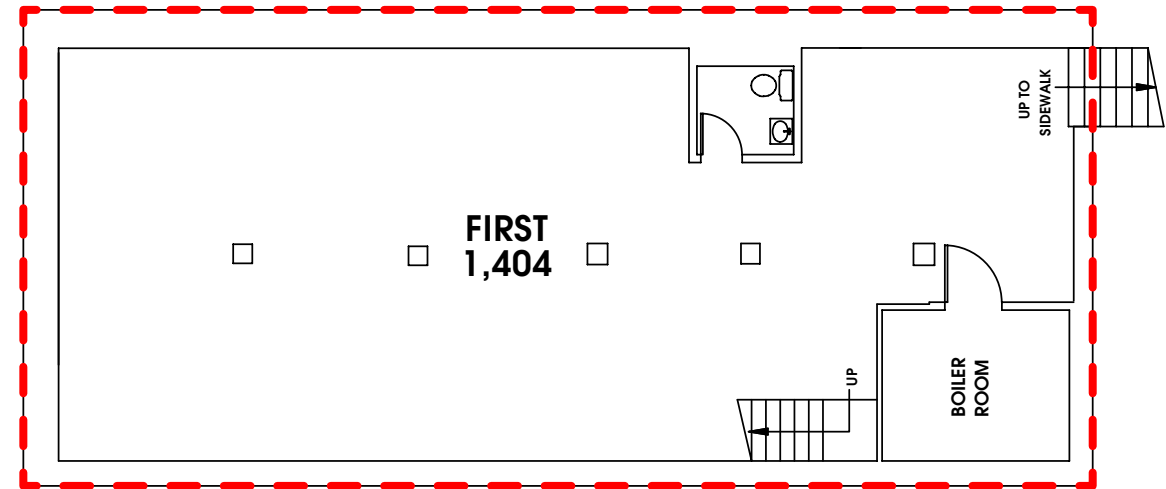
IMMEDIATE

COMMENTS:

FULL BUILDING OPPORTUNITY BETWEEN
BERRY STREET & WYTHE STREET

EXISTING FLAGPOLE AVAILABLE

FORMERLY OCCUPIED BY GENTRY





INTERIOR PHOTOS

108 N.
7TH STREET
WILLIAMSBURG | BROOKLYN

JOE MASTROMONACO
212.687.2400
jmastromonaco@dartco.com

FRITZ KEMERLING
212.687.2422
fritz@dartco.com

EVAN CLEMENTS
212.687.2431
eclements@dartco.com

270 LAFAYETTE STREET | SUITE 806
New York, New York 10012
212.687.2400
www.dartco.com

