

# Rosewood Plaza

## Retail/ Office Space for Lease



5574 N. Orange Blossom Trail,  
Orlando, FL 32810

### Property Details:

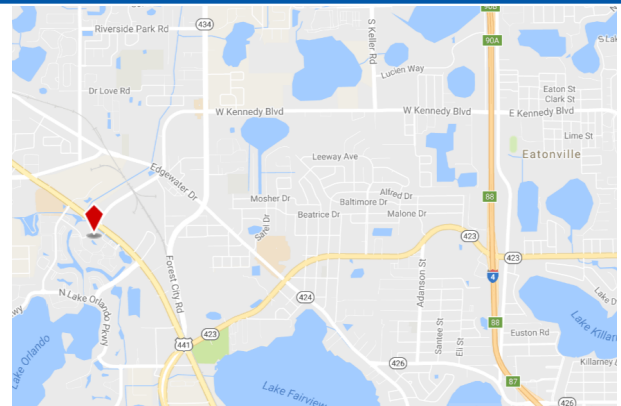
Total Space Available	4,740 SF
Rental Rate	\$8.00 SF/ Yr
Min. Divisible	1,000 SF
Max. Contiguous	2,500 SF
Property Type	Retail
Property Sub-type	Retail Other
Building Size	28,265 SF

### Spaces:

Suite	Space Available	Min Divisible	Max Contiguous	Price	Date Available	Description
3845	1,000 SF	1,000 SF	1,000 SF	\$8/ SF/ Yr	Now	Retail
5586	2,500 SF	2,500 SF	2,500 SF	\$8/ SF/ Yr	Now	Retail
5578	1,240 SF	1,240 SF	1,240 SF	\$8/ SF/ Yr	Now	Retail

### Location Description:

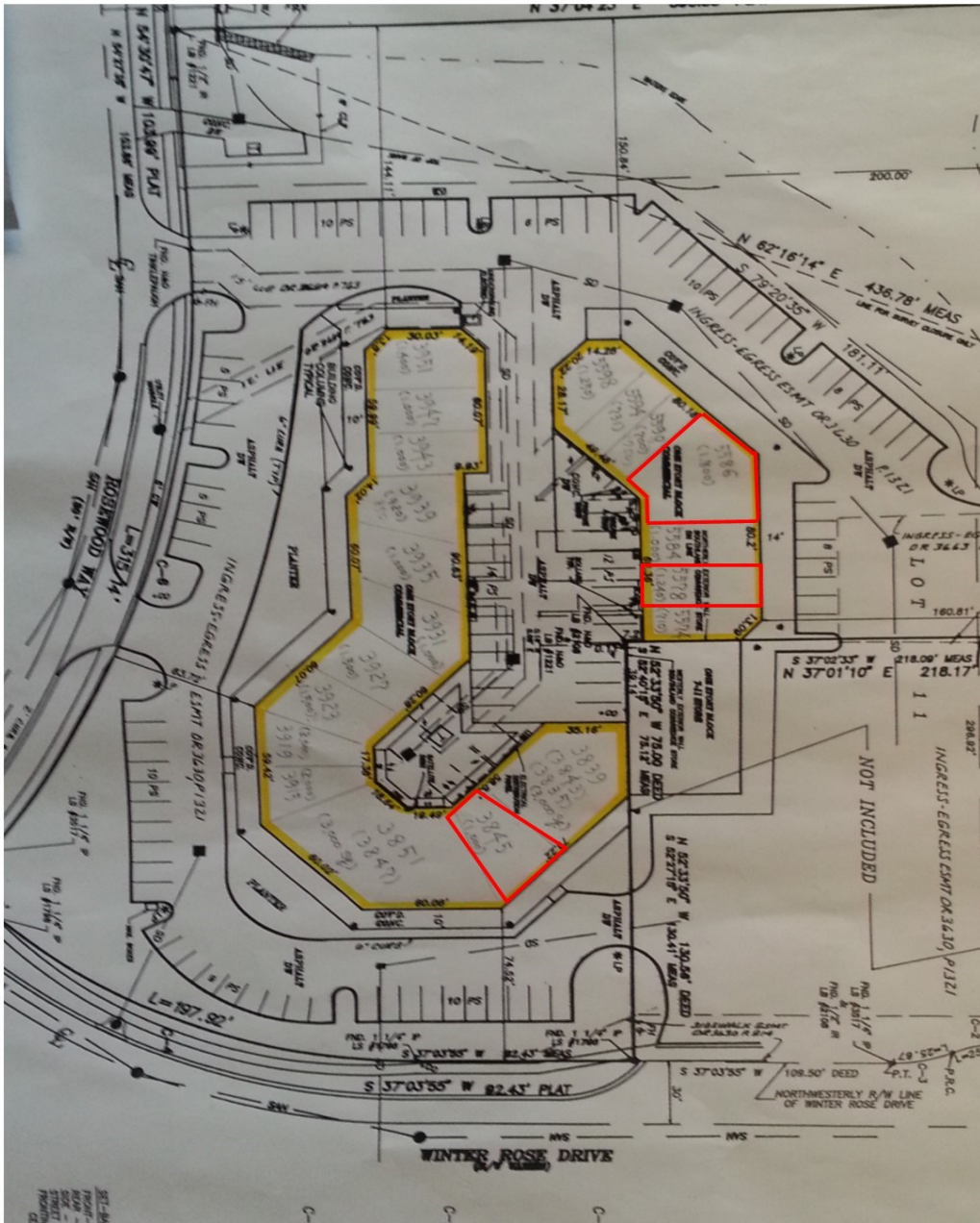
- Single story building
- Quick Access to I-4 and downtown
- Pylon signage available
- 24 hour traffic count: 30,500 vehicles
- Ample and convenient parking
- Restaurants and shopping nearby
- AC-1/W Zoning
- Retail and Office



Commercial Sales & Leasing | Property Management | Project Development | Acquisitions & Dispositions | Construction Services

Southeastern Realty Group, Inc. - 933 Lee Road Suite 400 - Orlando, FL 32810 - t: 407-629-5595 - f: 407-645-2035

# Site Plan:



Suite 3845—1,000 SF/ Suite 5578—1,240 SF/ Suite 5586—2,500 SF

**Southeastern Realty Group**  
933 Lee Road, Suite 400, Orlando, Florida 32810  
407-629-5595 phone, 407-645-2035 fax  
Visit our website at [www.southeasternrealty.com](http://www.southeasternrealty.com)