

Park 184 Building 2

18421 East Valley Highway
Kent, WA

Small Industrial Space for Lease

8,000 square feet

± 1,600 square feet of office

2 dock-high doors

1 grade-level door

\$0.52 PSF shell

\$0.75 PSF office add-on, NNN

Available now



Location



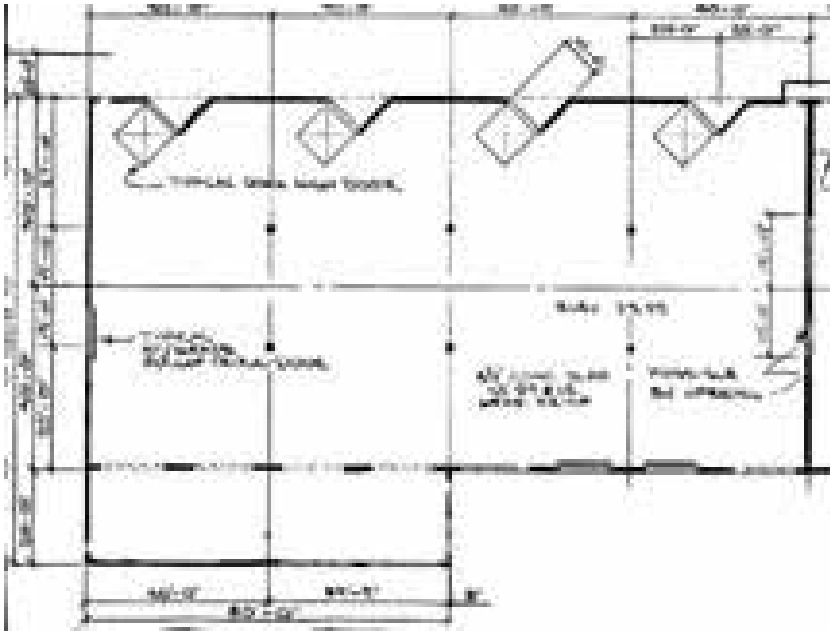
Contact

Peter Wooding

206.248.7301

pwooding@kiddermathews.com

Park 184 - Building 2



Contact

Peter Wooding
206.248.7301
pwooding@kiddermathews.com