

# FOR LEASE PROFESSIONAL OFFICES



31772 CASINO DRIVE - LAKE ELSINORE, CA

## Property Features:

- One Suite Available — ±1,861 SF
- Many Private Offices
- Secured access to suite
- Panoramic Views Of The Lake
- Easy Access To Freeway & Amenities
- Ample Parking
- Zoned C-1
- Available February 1, 2018

**LEASE RATE: \$0.99/SF M.G.**



LEE & ASSOCIATES | TEMECULA VALLEY  
25240 Hancock Avenue | Suite 100  
Murrieta, CA 92560 | 951.445.4500  
www.lee-associates.com | Corp. ID #01048055

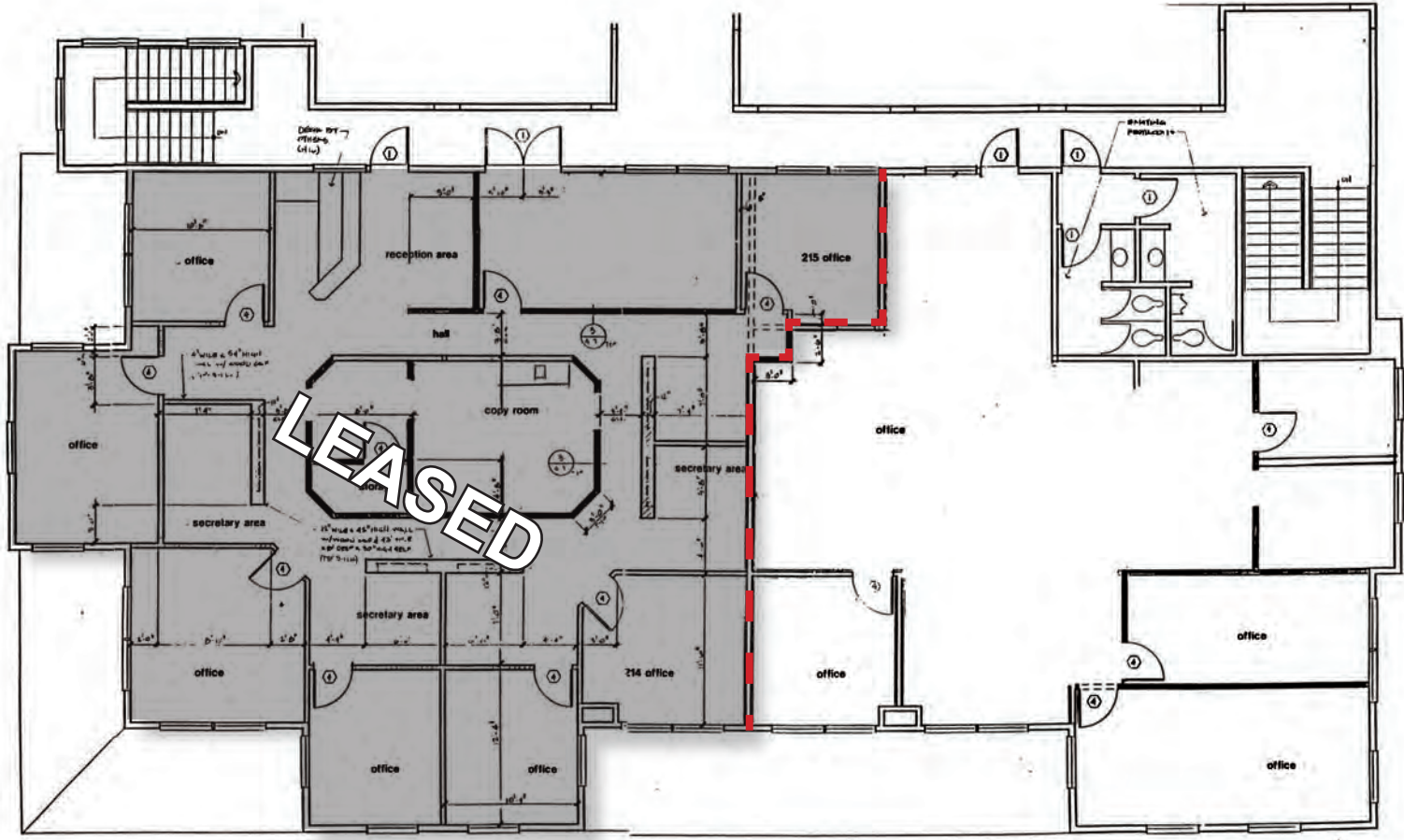
**LAURA MENDEN**  
951.445.4509

lmenden@lee-associates.com  
LICENSE # 00841606

# PROFESSIONAL OFFICES FOR LEASE

31772 CASINO DRIVE - LAKE ELSINORE, CA

## SECOND FLOOR



**SUITE C: ±2,417 SF  
LEASED**

**SUITE D: ±1,861 SF**



LEE & ASSOCIATES | TEMECULA VALLEY  
25240 Hancock Avenue | Suite 100  
Murrieta, CA 92560 | 951.445.4500  
www.lee-associates.com | Corp. ID #01048055

**LAURA MENDEN**  
951.445.4509  
lmenden@lee-associates.com  
LICENSE # 00841606

No warranty or representation is made to the accuracy of the foregoing information. Terms of sale or lease and availability are subject to change or withdrawal without notice