



Baskin-Robbins Building

6125 100th St SW, Tacoma, WA 98499

Retail building available for lease in highly desirable area of Lakewood, on busy 100th St just two buildings off the corner of Gravelly Lake Dr. New Don Carbón Restaurant across the street. Next door to Clover Park Veterinary Hospital and Lakewood Appliance; within minutes of Lakewood Towne Center. Approx 1,011sf space includes long counter, multiple hand-wash sinks, storage room, and restroom. Existing refrigeration units remain in the space. Great access and visibility. Approximately 17,880 VPD.

Property Overview

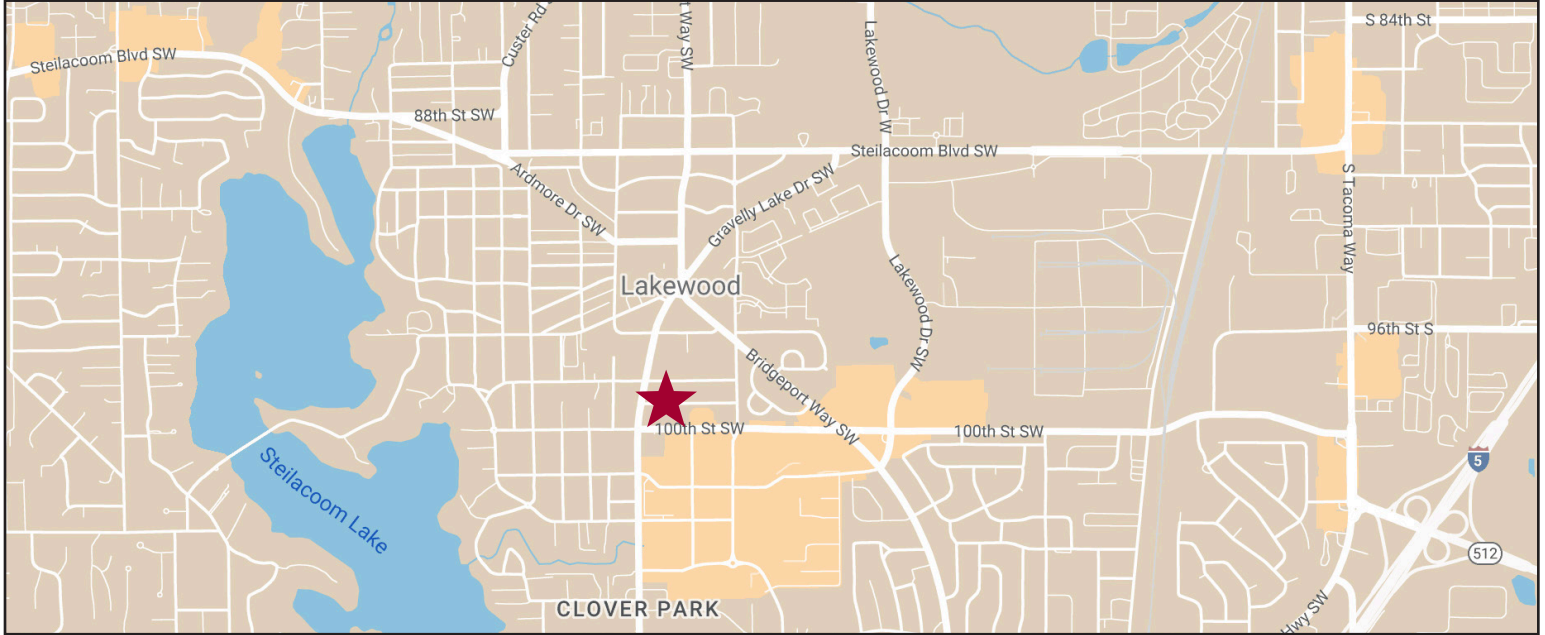
- Storefront glass
- Multiple hand-wash stations
- Existing refrigeration units in place
- Ample parking along two sides of building
- Excellent visibility
- Bus stop located in front
- Approx 1,011sf
- Rate: \$2,500/mo NNN

DISCLAIMER: The above information has been secured from sources believed to be reliable, however, no representations are made to its accuracy. Prospective tenants or buyers should consult their professional advisors and conduct their own independent investigation. Properties are subject to change in price and/or availability without notice.



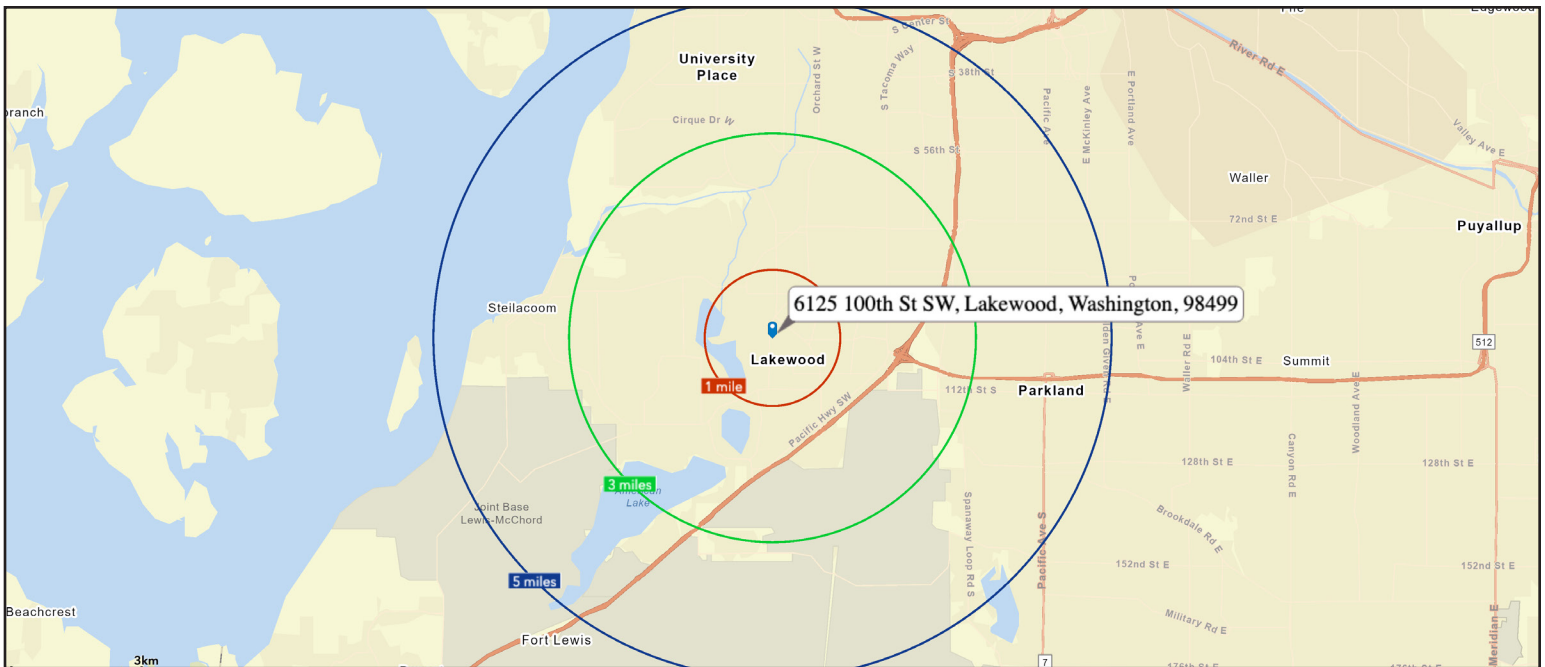


REGIONAL MAP



DEMOGRAPHICS

2021 Population	1 Mile	3 Miles	5 Miles
	11,343	96,515	232,308
2021 Household Income	1 Mile	3 Miles	5 Miles
	\$60,358	\$64,052	\$66,953



1120 Gravelly Lake Dr SW Ste 2
Lakewood, Washington 98499
johnson-commercial.com

Tim Johnson
timothy@johnson-commercial.com
(253) 209-9999



EXTERIOR PHOTOS



INTERIOR PHOTOS



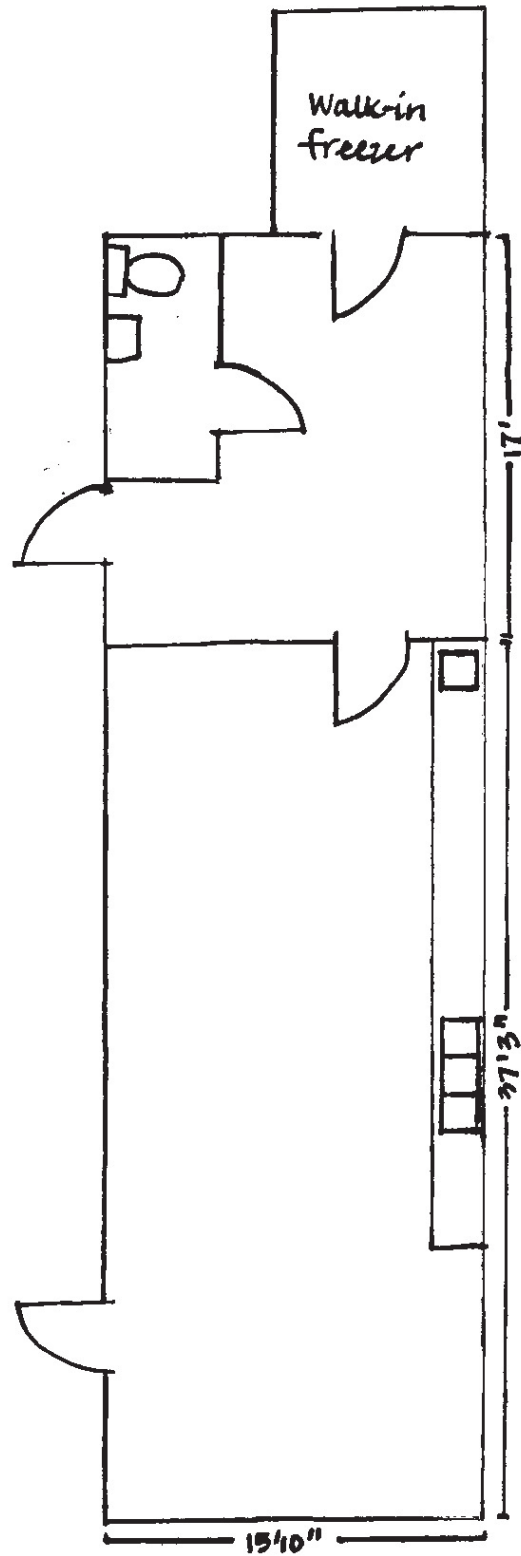
11120 Gravelly Lake Dr SW Ste 2
Lakewood, Washington 98499
johnson-commercial.com

Tim Johnson
timothy@johnson-commercial.com
(253) 209-9999



Retail Building for Lease

Floor Plan Sketch



11120 Gravelly Lake Dr SW Ste 2
Lakewood, Washington 98499
johnson-commercial.com

Tim Johnson
timothy@johnson-commercial.com
(253) 209-9999