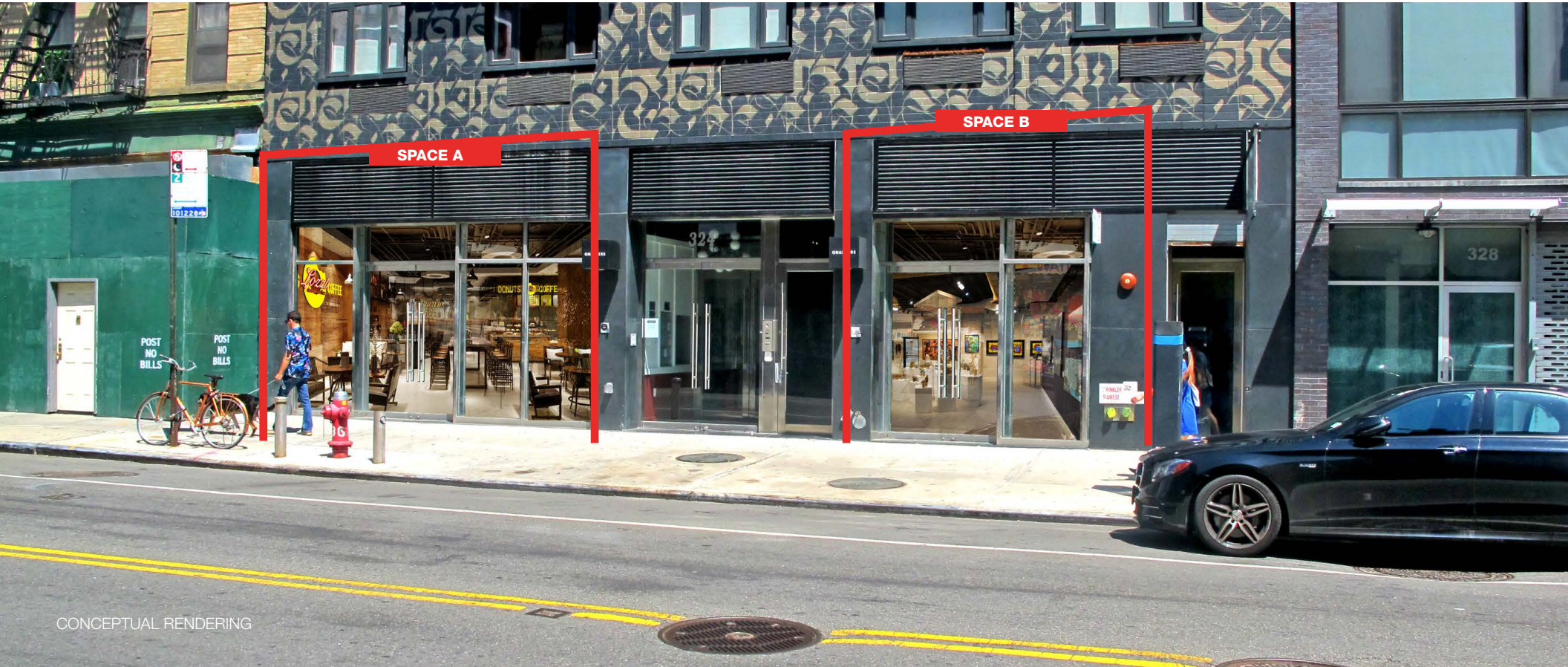


LOWER EAST  
SIDE

NEW YORK  
NY

# 324 GRAND STREET



CONCEPTUAL RENDERING

# SPACE DETAILS

### LOCATION

East block between Orchard and Ludlow Streets

### APPROXIMATE SIZE

|              |          |
|--------------|----------|
| Space A*     |          |
| Ground Floor | 2,000 SF |
| Space B*     |          |
| Ground Floor | 1,800 SF |
| Total        | 3,800 SF |

\*Can be combined

### CEILING HEIGHT

|              |       |
|--------------|-------|
| Ground Floor | 15 FT |
|--------------|-------|

### FRONTAGE

|                       |  |
|-----------------------|--|
| Space A               |  |
| 20 FT on Grand Street |  |
| Space B               |  |
| 14 FT on Grand Street |  |

### TERM

Long term

### POSSESSION

Immediate

### SITE STATUS

New Costruction

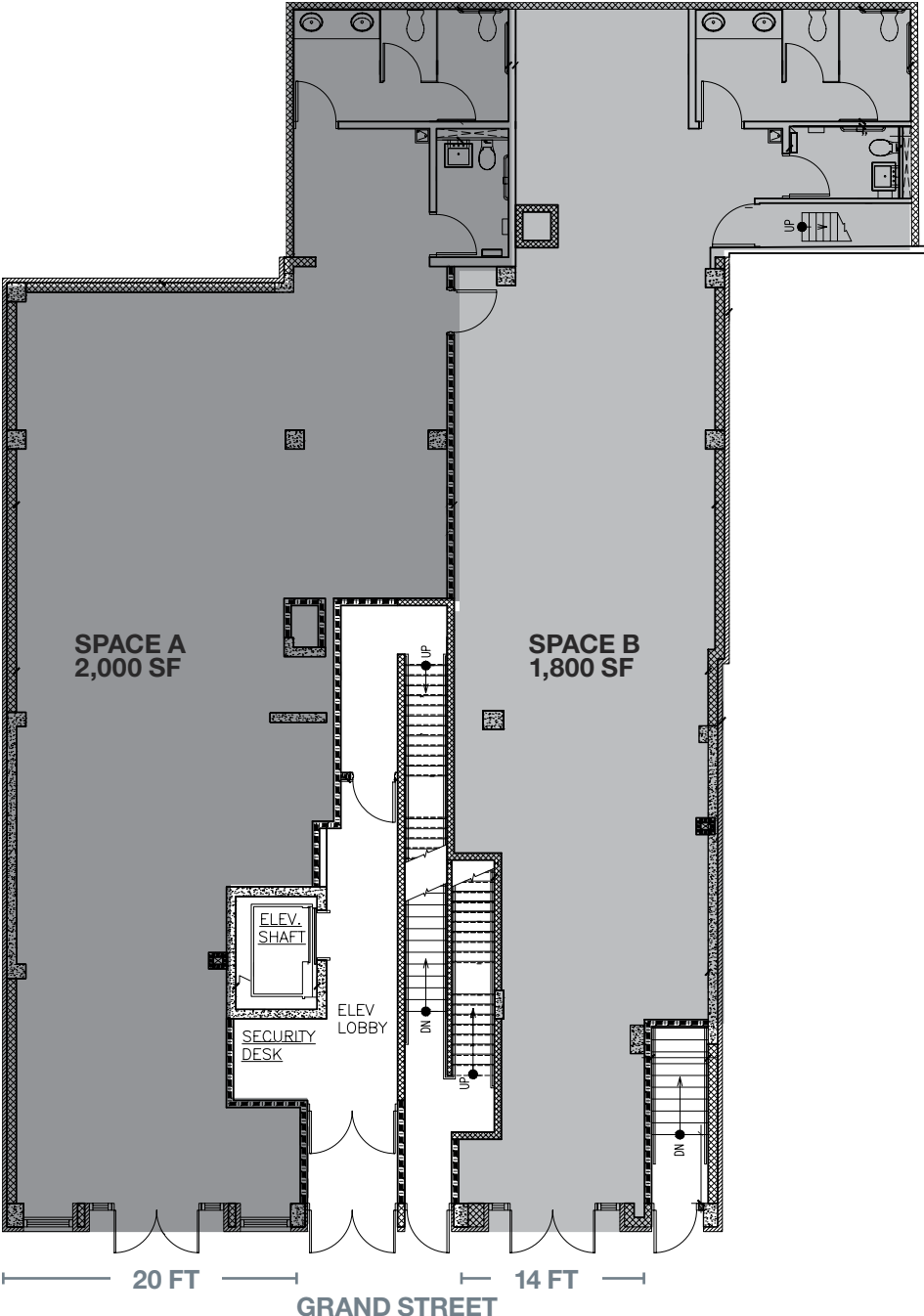
### NEIGHBORS

TD Bank, Scotch & Soda, HSBC Bank, Sticky Rice, An Choi, CVS Pharmacy, Target, Trader Joe's, Citibank

### COMMENTS

All uses accepted  
Venting possible

### GROUND FLOOR



# AREA RETAIL



## CONTACT EXCLUSIVE AGENTS

**JARED E. LACK**  
212.372.2493  
jlack@ngkf.com

**MATTHEW KRELL**  
212.372.2254  
mkrell@ngkf.com



NGKF.COM

© 2019 NEWMARK KNIGHT FRANK RETAIL. The information contained herein has been obtained from sources deemed reliable but has not been verified and no guarantee, warranty or representation, either express or implied, is made with respect to such information. Terms of sale or lease and availability are subject to change or withdrawal without notice.