



## PROPERTY HIGHLIGHTS

- 1,270 SF Available
- Mostly Open Layout
- 1 Private Office, 1 Conference Room
- Easy Access to Hwy 237
- Close to Light Rail and Public Transportation
- Ample Parking 4/1000
- Asking \$2.65/SF Gross
- Call to Tour



**AARON FRITZ, CCIM**  
**Senior Director**  
 +1 408 436 3661  
 aaron.fritz@cushwake.com  
 LIC #01216555

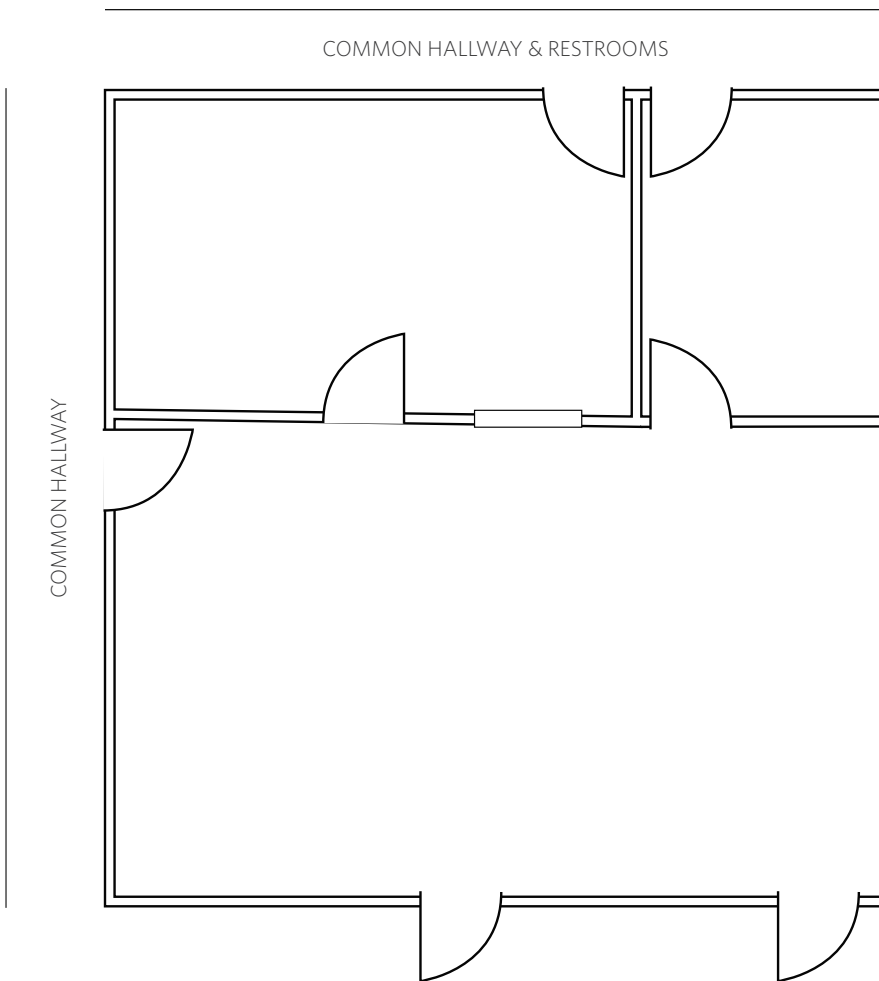
300 Santana Row, Fifth Floor  
 San Jose, California  
 main +1 408 615 3400  
 fax +1 408 615 3444  
[www.cushmanwakefield.com](http://www.cushmanwakefield.com)



**CUSHMAN &  
WAKEFIELD**

**OFFICE / RETAIL SPACE AVAILABLE FOR LEASE**  
**1260 Persian Drive, Suite A-3**  
Sunnyvale, California

## Floor Plan / **±1,270 SF**



**AARON FRITZ, CCIM**  
**Senior Director**  
+1 408 436 3661  
aaron.fritz@cushwake.com  
LIC #01216555

300 Santana Row, Fifth Floor  
San Jose, California  
main +1 408 615 3400  
fax +1 408 615 3444  
[www.cushmanwakefield.com](http://www.cushmanwakefield.com)