

---

# 2,000 SF BRICK BUILDING AVAILABLE ON MAIN CORRIDOR TO HARRISONBURG

14807 Spotswood Trail, Elkton, VA 22827

---

## Executive Summary



## OFFERING SUMMARY

Sale Price:	\$574,900
Lot Size:	0.95 Acres
Building Size:	2,000 SF +/-
Zoning:	B2
Utilities:	Public Water Public Sewer
Parking:	Private   Paved Handicap Accessible
MLS#:	627927



## PROPERTY OVERVIEW

2,000 SF+/- brick bank building on nearly an acre of land just off 33 East, major corridor for the area is available for purchase. This building retains the infrastructure to continue as a bank, but could be converted into restaurant or other commercial use with ease, with its multiple drive aisles and ample parking and location in front of Food lion, grocery store for the area. This location is close for the million plus visitors that visit Massanutten, local residents, and lot of day time employees and commuters that pass by everyday.

### For More Information:

Craig Anders  
540.383.6054  
craig.anders@cottonwood.com

**COTTONWOOD**  
COMMERCIAL  
A COMMERCIAL REAL ESTATE BROKERAGE



---

## 2,000 SF BRICK BUILDING AVAILABLE ON MAIN CORRIDOR TO HARRISONBURG

14807 Spotswood Trail, Elkton, VA 22827

---

### Interior Photos



For More Information:

Craig Anders

540.383.6054

[craig.anders@cottonwood.com](mailto:craig.anders@cottonwood.com)

**COTTONWOOD**  
**COMMERCIAL**  
A COMMERCIAL REAL ESTATE BROKERAGE

We obtained the information above from sources we believe to be reliable. However, we have not verified its accuracy and make no guarantee, warranty or representation about it. It is submitted subject to the possibility of errors, omissions, change of price, rental or other conditions, prior sale, lease or financing, or withdrawal without notice. We include projections, opinions, assumptions or estimates for example only, and they may not represent current or future performance of the property. You and your tax and legal advisors should conduct your own investigation of the property and transaction.



---

## 2,000 SF BRICK BUILDING AVAILABLE ON MAIN CORRIDOR TO HARRISONBURG

14807 Spotswood Trail, Elkton, VA 22827

---

### Additional Photos



For More Information:

Craig Anders

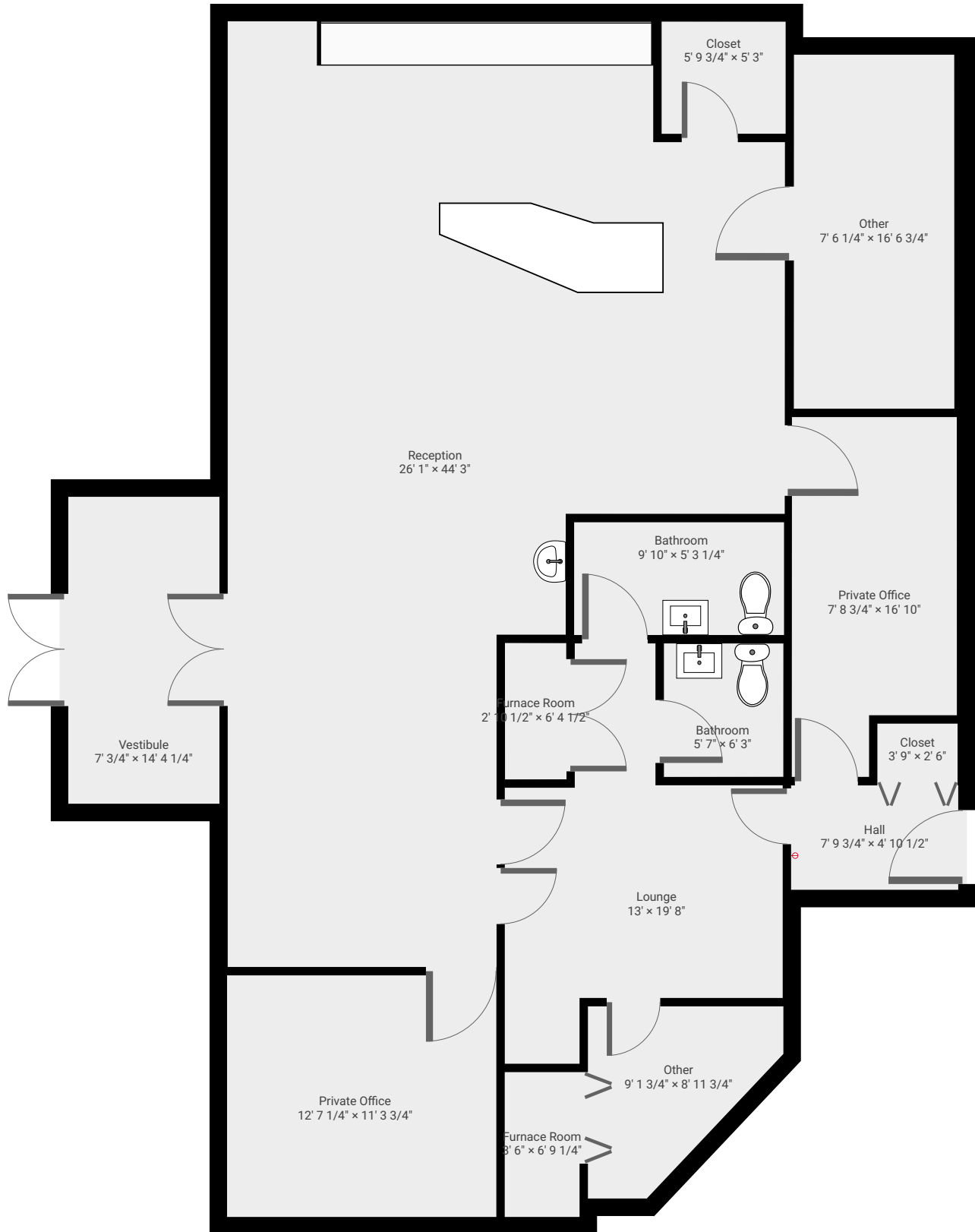
540.383.6054

[craig.anders@cottonwood.com](mailto:craig.anders@cottonwood.com)

**COTTONWOOD**  
**COMMERCIAL**  
A COMMERCIAL REAL ESTATE BROKERAGE

We obtained the information above from sources we believe to be reliable. However, we have not verified its accuracy and make no guarantee, warranty or representation about it. It is submitted subject to the possibility of errors, omissions, change of price, rental or other conditions, prior sale, lease or financing, or withdrawal without notice. We include projections, opinions, assumptions or estimates for example only, and they may not represent current or future performance of the property. You and your tax and legal advisors should conduct your own investigation of the property and transaction.

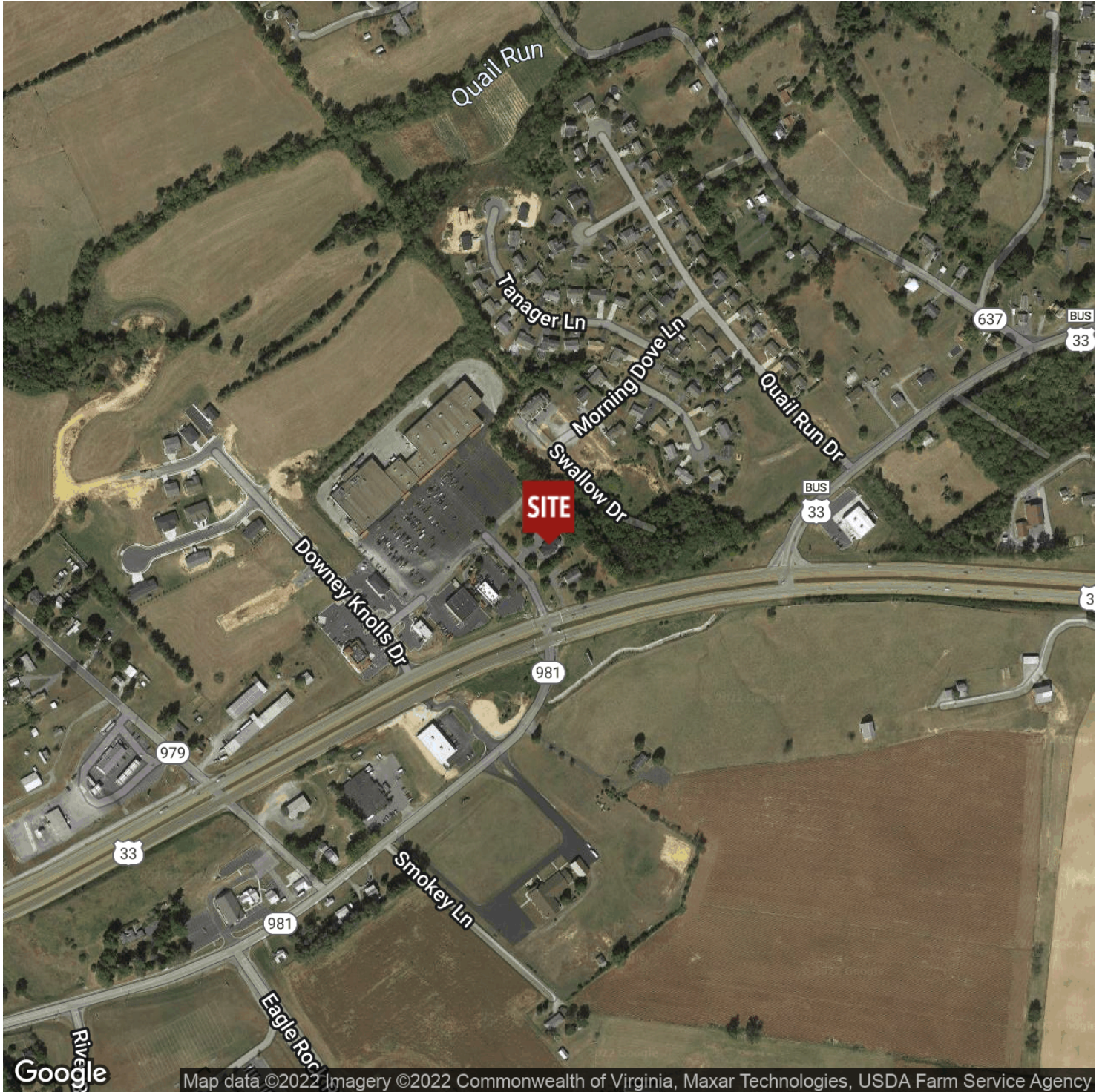
▼ Ground Floor





**2,000 SF BRICK BUILDING AVAILABLE ON MAIN CORRIDOR TO HARRISONBURG**  
14807 Spotswood Trail, Elkton, VA 22827

**Location Map**



*For More Information:*

**Craig Anders**

540.383.6054

[craig.anders@cottonwood.com](mailto:craig.anders@cottonwood.com)

**COTTONWOOD**  
**COMMERCIAL**  
A COMMERCIAL REAL ESTATE BROKERAGE

We obtained the information above from sources we believe to be reliable. However, we have not verified its accuracy and make no guarantee, warranty or representation about it. It is submitted subject to the possibility of errors, omissions, change of price, rental or other conditions, prior sale, lease or financing, or withdrawal without notice. We include projections, opinions, assumptions or estimates for example only, and they may not represent current or future performance of the property. You and your tax and legal advisors should conduct your own investigation of the property and transaction.