



For Sale

Angleton 288 Industrial Park
Highway 288 & County Rd 341
Angleton, TX 77515

Up to ±17.76 acres available
Land sites for sale, design build or build to suit

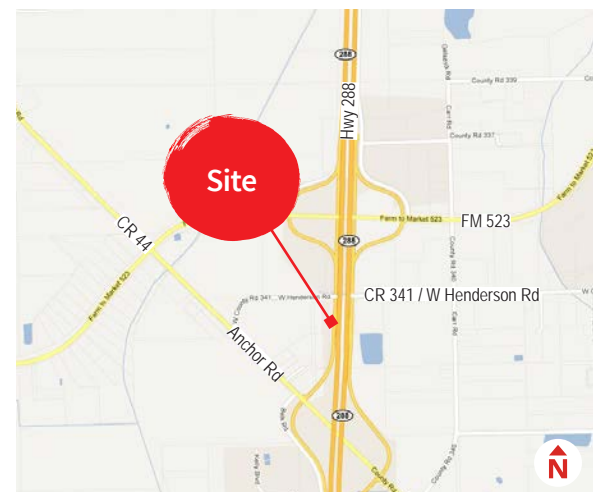
Site features:

- Sites ranging from ±1.75 acres to ±8.19 acres
- Price: \$3.25 to \$6.50/s.f.
- Land sites for sale, design build or build to suit
- Deed restricted business park
- Utilities: Provided by the City of Angleton
- Detention is in place
- Excellent access from Highway 288, County Rd 341 and County Rd 44
- Direct access on to Highway 288 South

Mark Nicholas, SIOR
 +1 713 888 4024
mark.nicholas@am.jll.com

Joe Berwick
 +1 713 425 5842
joseph.berwick@am.jll.com

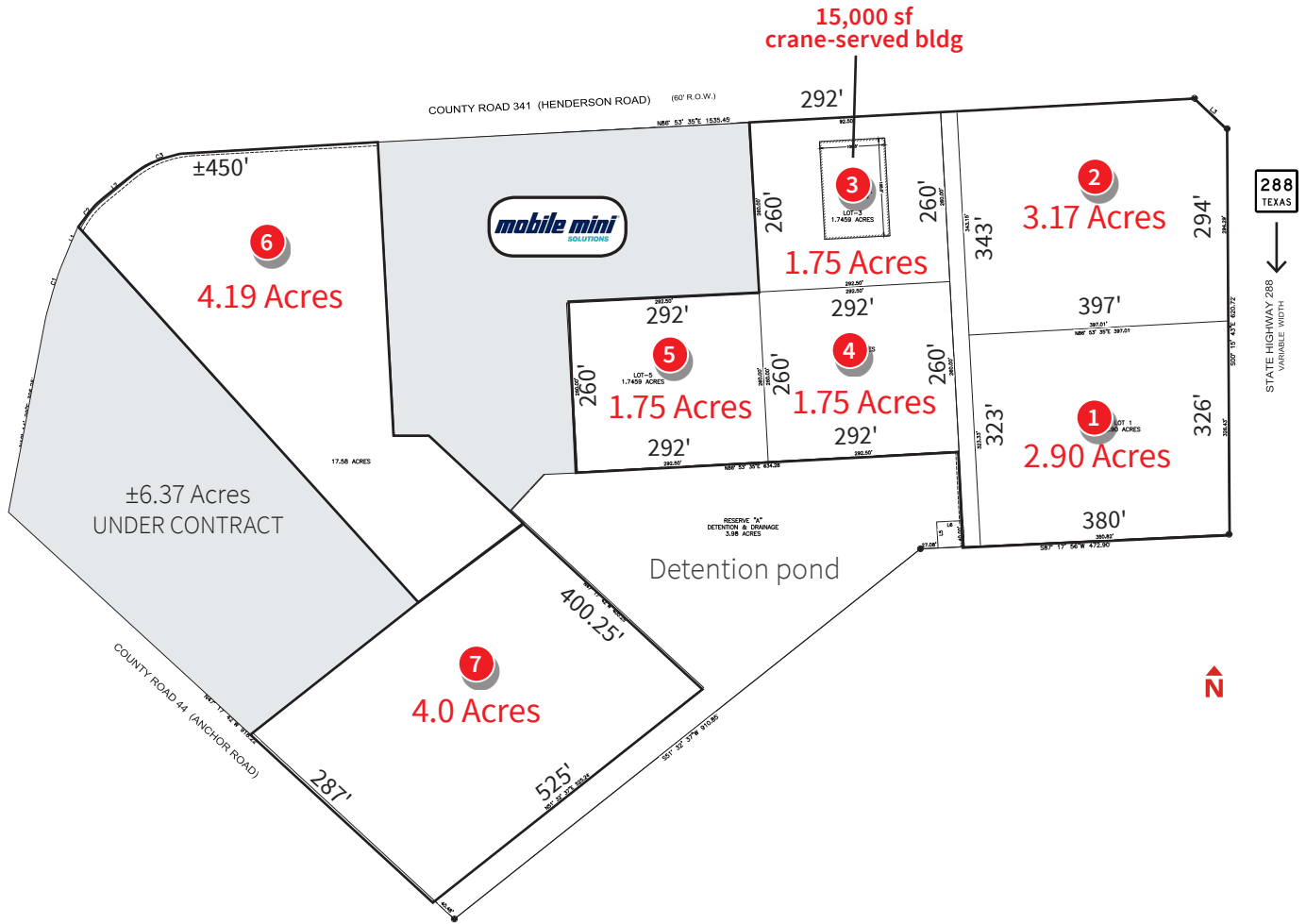
David Holland
 +1 713 888 4095
david.holland@am.jll.com



For Sale

Up to ±17.76 acres available for sale, design build or build to suit

Angleton 288 Industrial Park | Angleton, TX 77515



PARCEL	ACRES	SQUARE FEET	PRICE PSF	TOTAL PRICE	STATUS
Lot-1	2.90	126,324	\$6.50 psf	\$821,106.00	Available
Lot-2	3.17	138,085	\$6.50 psf	\$897,552.50	Available
Lot-3	1.75	building: 15,000 sf land: 76,230	sale: \$100 psf lease: \$0.80 psf NNN	sale: \$1,500,000.00 lease: \$12,000/sf mo NNN	Available
Lot-4	1.75	76,230	\$3.25 psf	\$247,747.50	Available
Lot-5	1.75	76,230	\$3.25 psf	\$247,747.50	Available
Lot-6	4.19	182,516	\$3.25 psf	\$593,177.00	Available
Lot-7	4.00	174,240	\$3.25 psf	\$566,280.00	Available

The information contained herein is obtained from sources believed to be reliable; however, JLL makes no guarantees, warranties or representations as to the completeness or accuracy thereof. The presentation of this property is submitted subject to errors, omissions, change of price or conditions, and is subject to prior sale, lease or withdrawal without notice.

