

# Libbie Place

Southeast Corner of Broad St. and Libbie Ave.  
Richmond, VA



- **NOW AVAILABLE**  
2,234 sq ft (40' 6" x 55')
- 205,000 SF Community Center anchored by Target, Barnes & Noble, PetSmart, Vitamin Shoppe AT&T, Fedex Kinkos and the new Metro Dinner
- Excellent location at South East Corner Broad and Libbie Avenue
- 1/4 mile west of The Shoppes at Willow Lawn, Kroger and Old Navy

	<b>DEMOGRAPHICS</b>		
	<b>1 mile</b>	<b>2 miles</b>	<b>3 miles</b>
Population	7,753	36,554	91,211
Daytime Population	22,262	41,865	96,593
Average HH Income	\$103,108	\$118,450	\$99,212

	<b>TRAFFIC COUNTS</b>	
Broad Street	±37,000 VPD	
Libbie Avenue	±11,300 VPD	



**Sigma National, Inc**  
1213 Mall Drive  
Richmond, VA 23235  
(804) 423-5335  
www.sigmanational.com

**CONTACT**  
Tred Spratley  
tredspratley@sigmanational.com  
(804) 423-5335, x320

Wilson Davis  
wilsondavis@sigmanational.com  
(804) 423-5335, x301

# Libbie Place

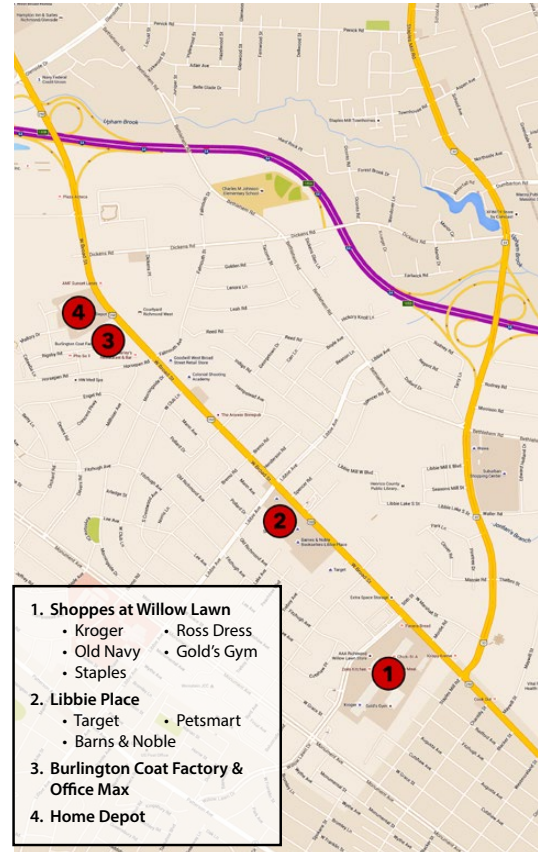
Southeast Corner of Broad St. and Libbie Ave.  
Richmond, VA



## TENANT DATA

ADDRESS	TENANT	SQ.FT.	ADDRESS	TENANT	SQ.FT.	ADDRESS	TENANT	SQ.FT.
5401	TARGET	130,271	5701	THE VITAMIN SHOP	4,922			
5501	BARNES & NOBLE	24,913	5709	F45 FITNESS	2,353			
5515	PETSMART	17,250	5711	BARRE	1,189			
5601	AT&T	3,507	5719	KINKO'S/FED EX	8,119			
5607	EINSTEIN BROS. BAGELS	2,327						

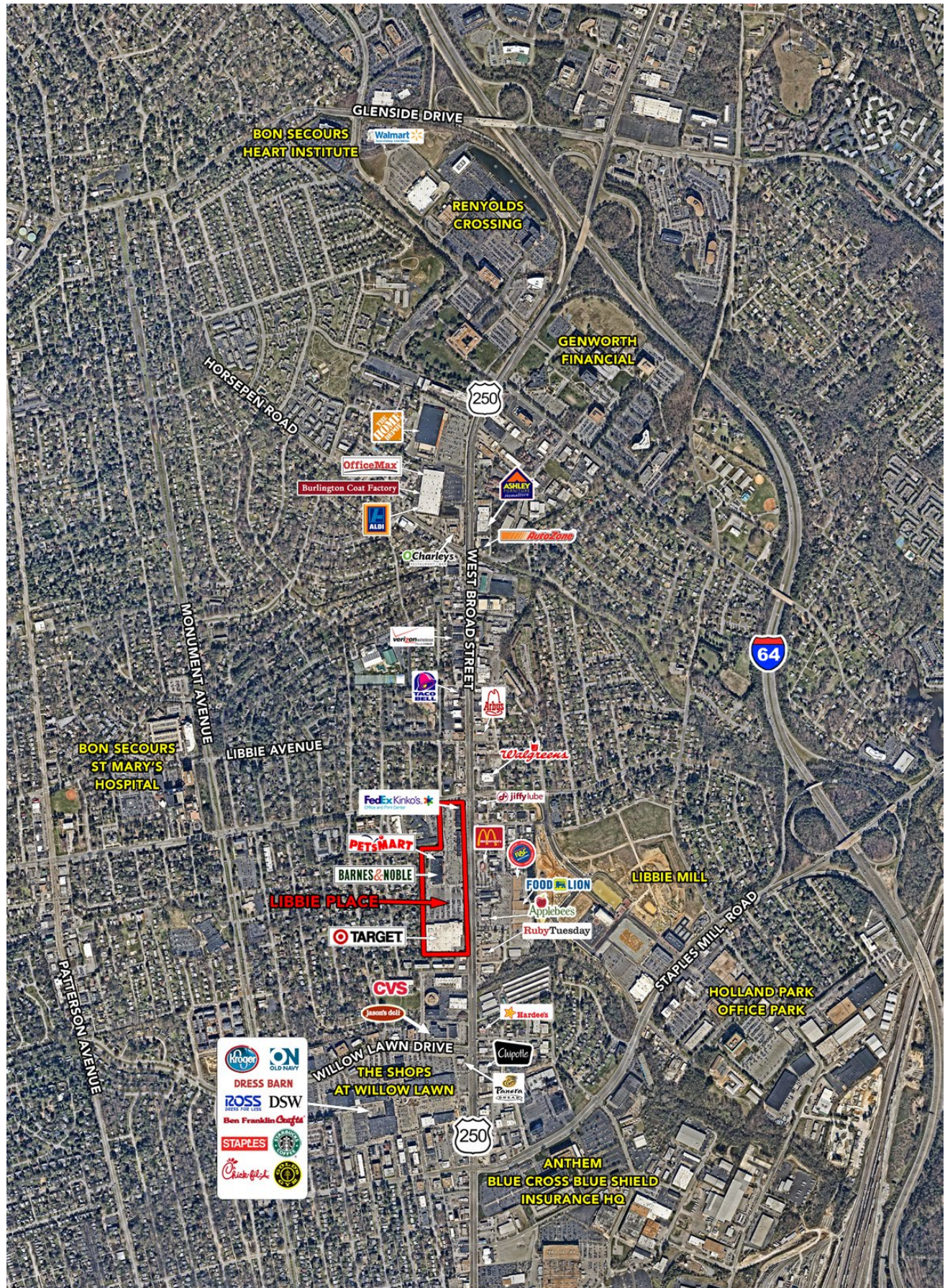
AVAILABLE SPACES ARE SHADED  
SHOPPING CENTER IS FULLY OCCUPIED





# Libbie Place

Southeast Corner of Broad St. and Libbie Ave.  
Richmond, VA



Information contained within is deemed reliable, but is not guaranteed. Subject to prior leasing.



# Libbie Place

Southeast Corner of Broad St. and Libbie Ave.  
Richmond, VA



Information contained within is deemed reliable, but is not guaranteed. Subject to prior leasing.