



CREATIVE OFFICE SPACE FOR LEASE



10811 WASHINGTON BOULEVARD • Culver City, CA 90232

SUITE 360: Approximately 1,740 square feet

RATE: \$2.85 per square foot per month, MG
(net of electrical and janitorial)

PARKING: 3/1000 - \$85 per space per month

TERM: 1 - 2 years

AVAILABLE: Immediately

RAFAEL PADILLA

310.395.2663 x102

RAFAEL@PARCOMMERCIAL.COM

Lic# 00960188

GREG ECKHARDT

310.395.2663 x103

GECKO@PARCOMMERCIAL.COM

Lic# 01255469

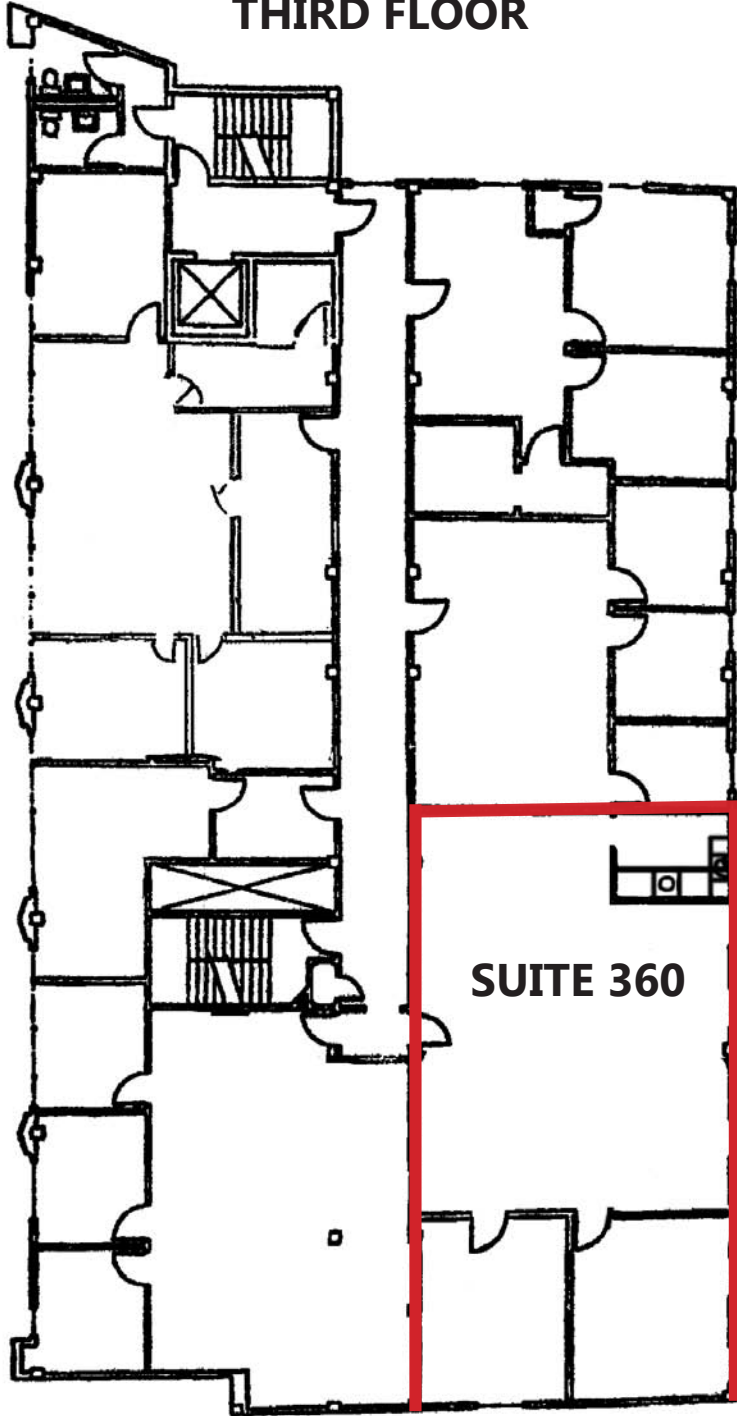
- Located next to the Culver Center with numerous amenities including banks, restaurants, cafes and national retailers
- On-site ownership & management
- Open creative office space plan
- Adjacent to Sony Studios
- Easy access to 405 freeway
- Near downtown Culver City
- Office faces north east

1250 6th St., #303, Santa Monica, CA 90401 • 310.395.2663 • www.parcommercial.com

All information furnished is from sources deemed reliable and which we believe to be correct, but no representation or guarantee is given as to its accuracy and is subject to errors and omissions. All measurements are approximate and have not been verified by Broker. You are advised to conduct an independent investigation to verify all information.

PROPERTY PHOTOS & FLOOR PLAN

THIRD FLOOR



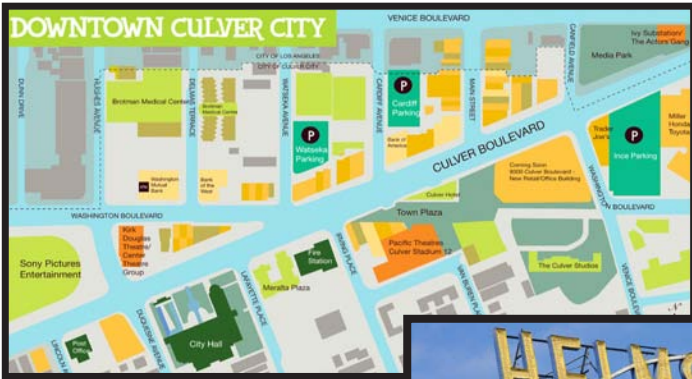
RAFAEL PADILLA
310.395.2663 x102
RAFAEL@PARCOMMERCIAL.COM
Lic# 00960188

GREG ECKHARDT
310.395.2663 x103
GECKO@PARCOMMERCIAL.COM
Lic# 01255469



CULVER CITY

Culver City is a town on the rise. People are coming to Culver City to live, eat, drink, shop, unwind, mingle and revel in the City's iconic beauty and rich history. The neighborhood has become a hub for culture and nightlife, hosting eclectic events while providing the clean and efficient transportation to reach them. Recent commercial developments have created an exhilarating momentum, turning heads, and interest throughout Southern California.



10811 WASHINGTON BOULEVARD

CULVER CENTER

SONY STUDIOS

CITY HALL

DOWNTOWN CULVER CITY

RAFAEL PADILLA
 310.395.2663 x102
 RAFAEL@PARCOMMERCIAL.COM
 Lic# 00960188

GREG ECKHARDT
 310.395.2663 x103
 GECKO@PARCOMMERCIAL.COM
 Lic# 01255469

