

## ±10,459 SF Office Building

202 S Prospect St  
Orange, CA

±10,459 SF office building

0.46 acre lot

APN: 094-581-57

±45 parking spaces (easement  
from church)

Zoning: R1-7

Currently used as office

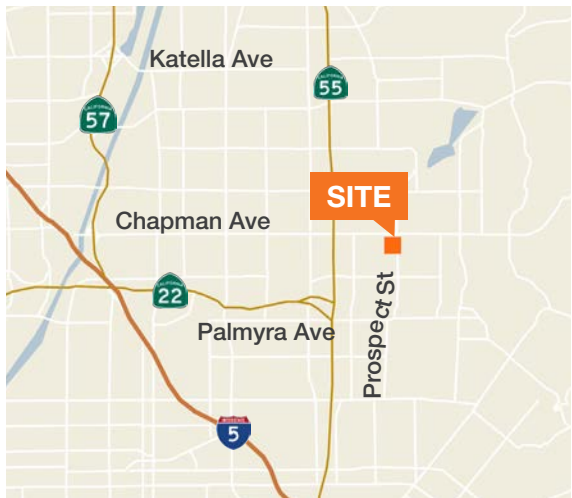
Use restrictions exist

Please do not disturb church/  
tenants

**Sale Price: \$1,650,000**



### Location

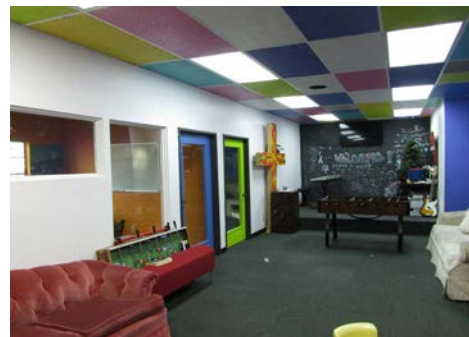
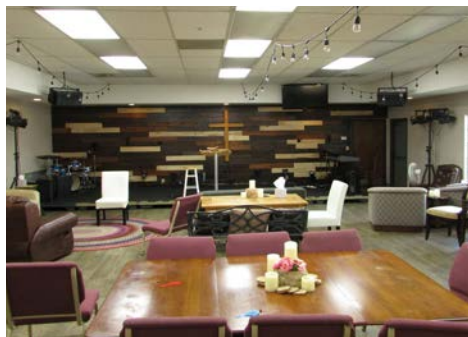


### Contact

**Eric Knowles**  
858.369.3017  
eknowles@kiddermathews.com  
LIC # 00944210

**Robert Fletcher**  
858.369.3034  
rfletcher@kiddermathews.com  
LIC # 01706060

202 S Prospect St



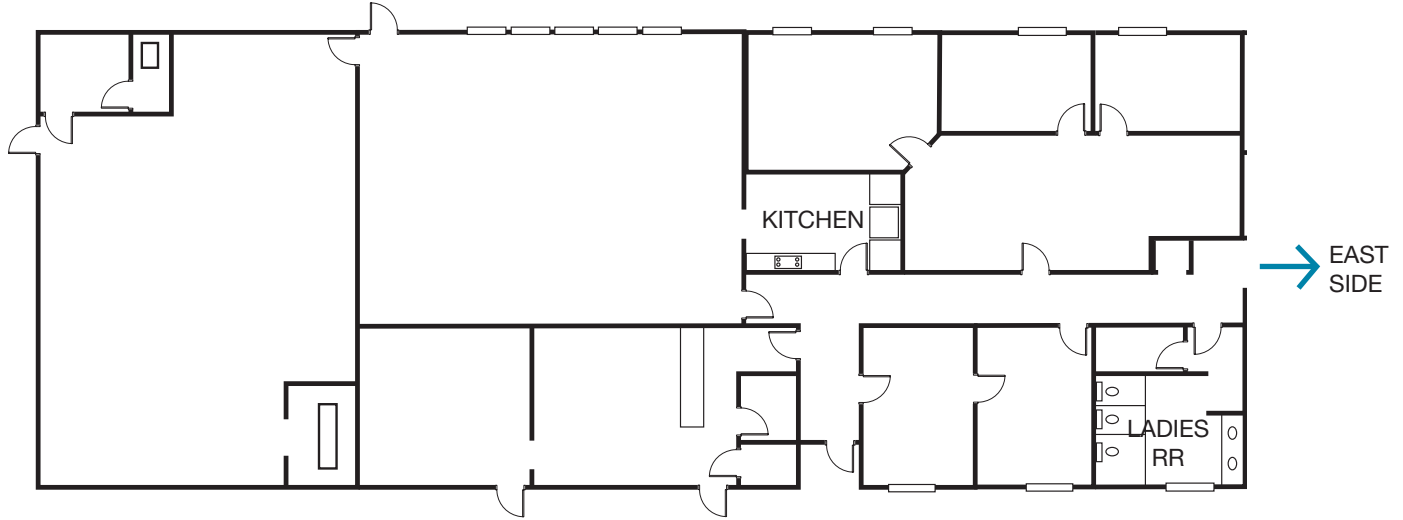
## Contact

**Eric Knowles**  
858.369.3017  
eknowles@kiddermathews.com  
LIC #00944210

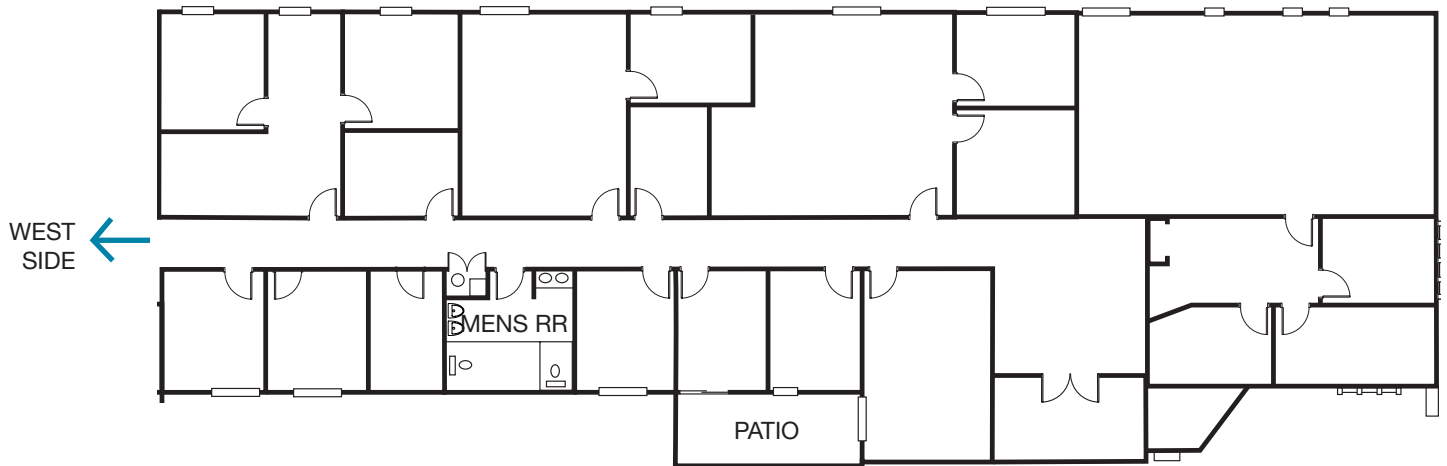
**Robert Fletcher**  
858.369.3034  
rfletcher@kiddermathews.com  
LIC #01706060

## Floor Plans

### WEST END OF BUILDING



### EAST END OF BUILDING



## Contact

**Eric Knowles**  
858.369.3017  
eknowles@kiddermathews.com  
LIC #00944210

**Robert Fletcher**  
858.369.3034  
rfletcher@kiddermathews.com  
LIC #01706060