

# 899

WEST EVELYN

MOUNTAIN VIEW



Located in Downtown Mountain View

±70,232 SF Class A+ Office Building

For Sublease



# 899

WEST EVELYN  
MOUNTAIN VIEW

## highlights

- Class A building with amazing finishes
- 70,232 sq ft
- Located in the heart of downtown Mountain View within a couple hundred yards of the Cal Train station
- Available May 1, 2019
- Sublease through August 8, 2025
- Showers, lockers and fitness center
- Nice size cafeteria / all hands meeting space
- Spectacular roof deck with amazing views
- Operable windows
- Exposed ceiling with polished concrete in the circulation space



# photos





aerial view

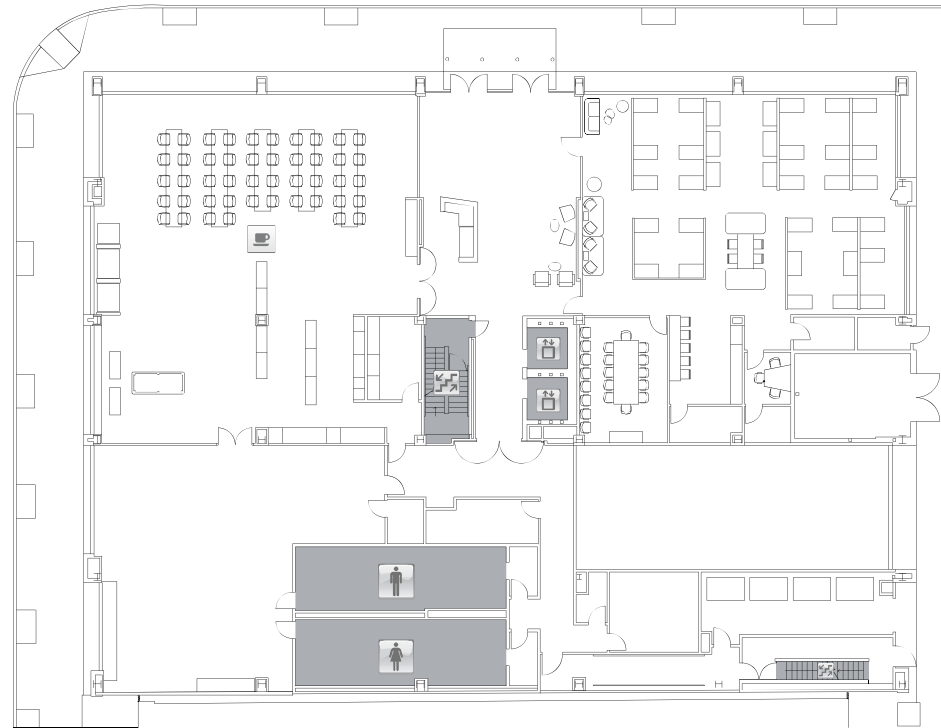


899  
WEST EVELYN  
MOUNTAIN VIEW

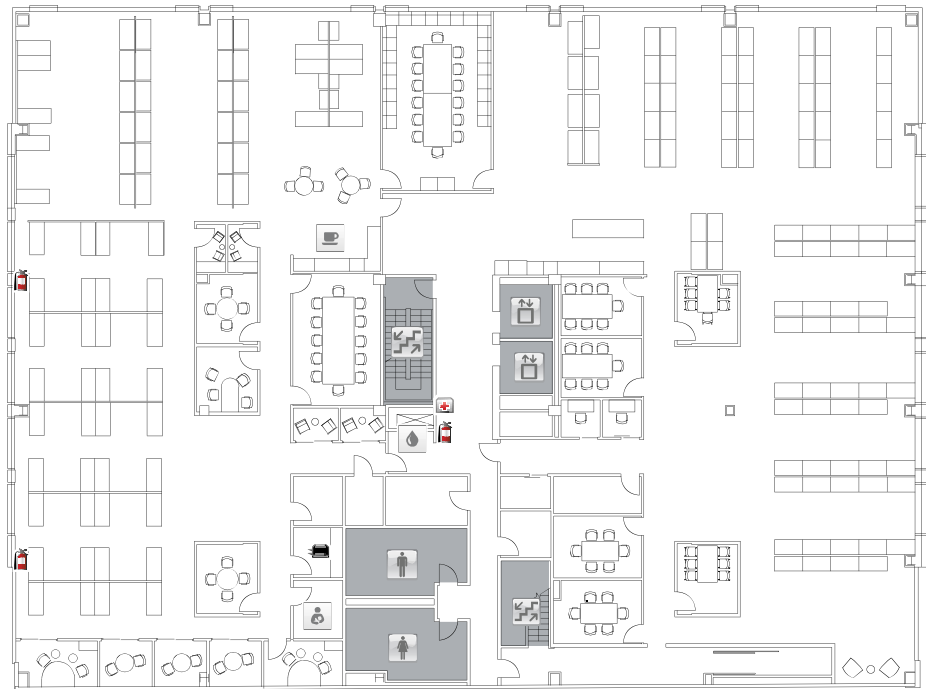


**899**  
WEST EVELYN  
MOUNTAIN VIEW

## First Floor



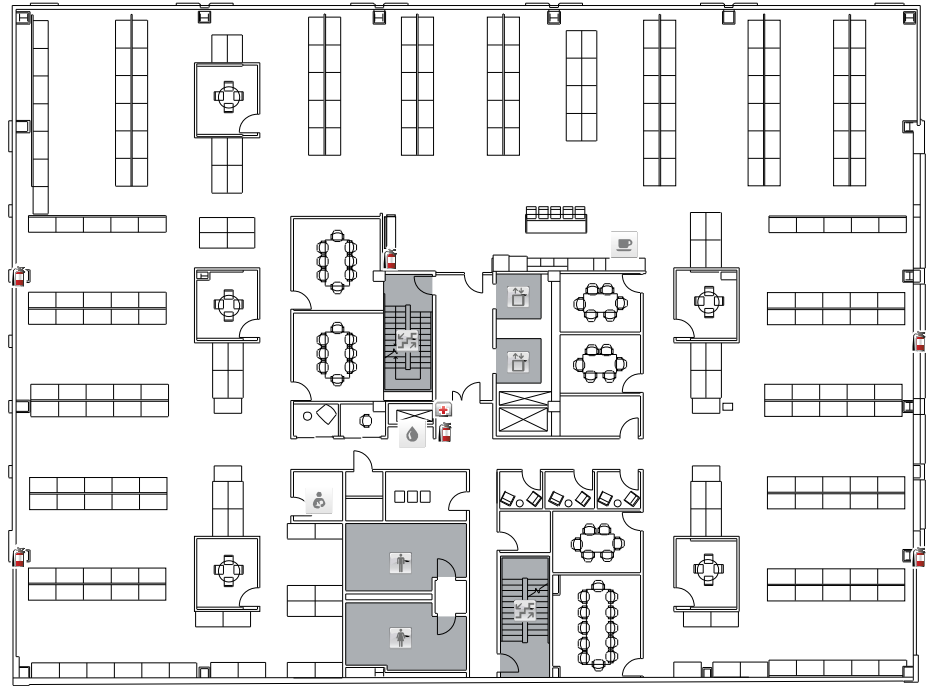
## Second Floor



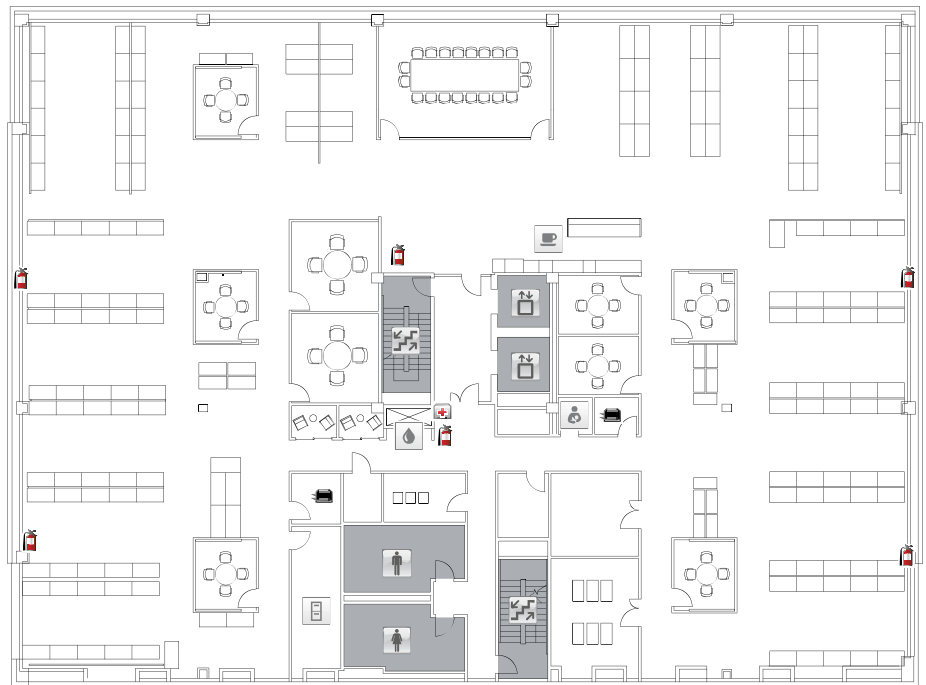


**899**  
WEST EVELYN  
MOUNTAIN VIEW

Third Floor



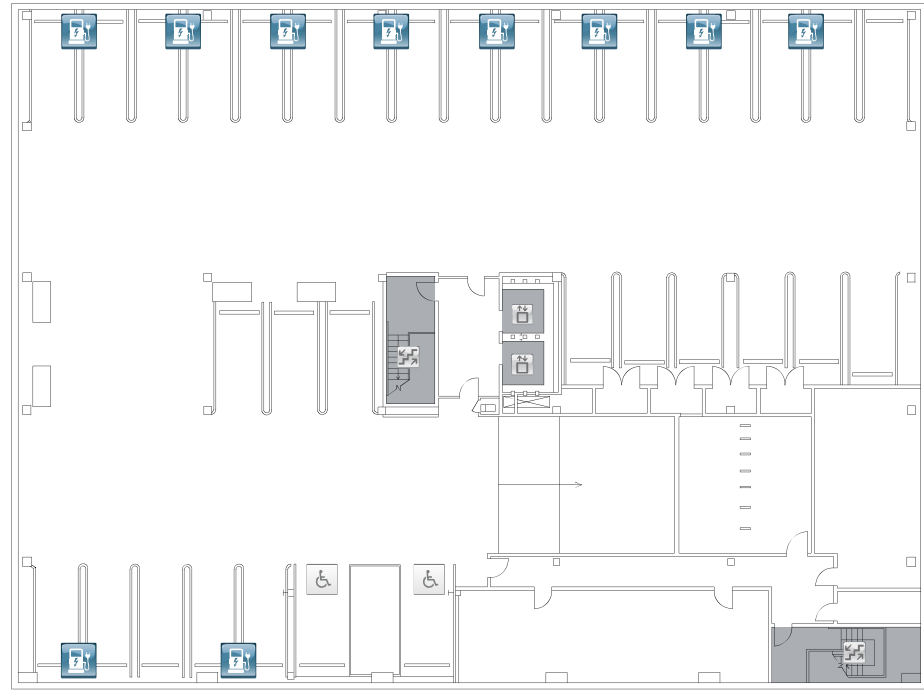
Fourth Floor



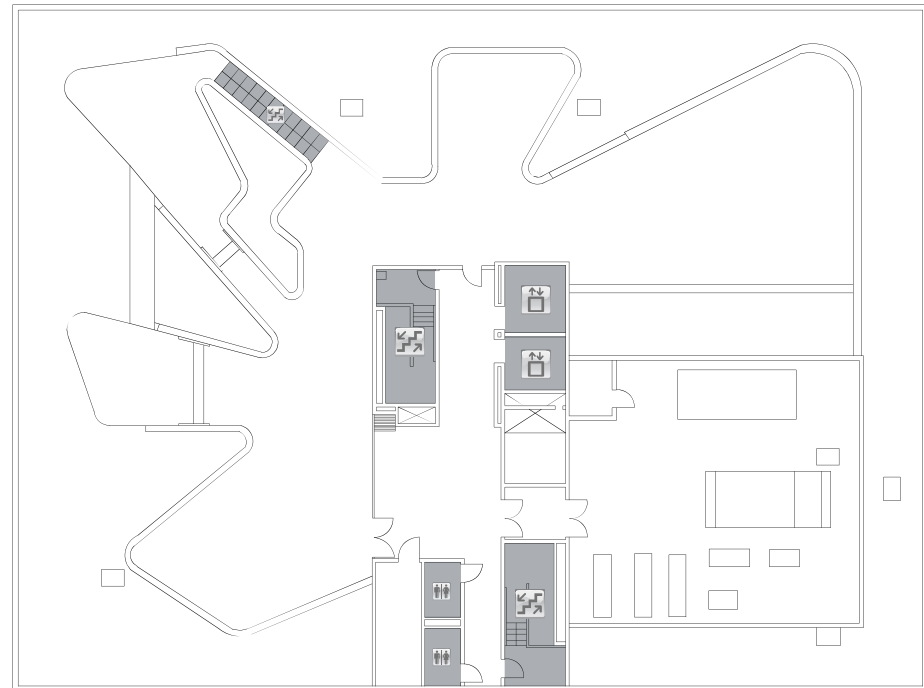


**899**  
WEST EVELYN  
MOUNTAIN VIEW

## Basement



## Penthouse

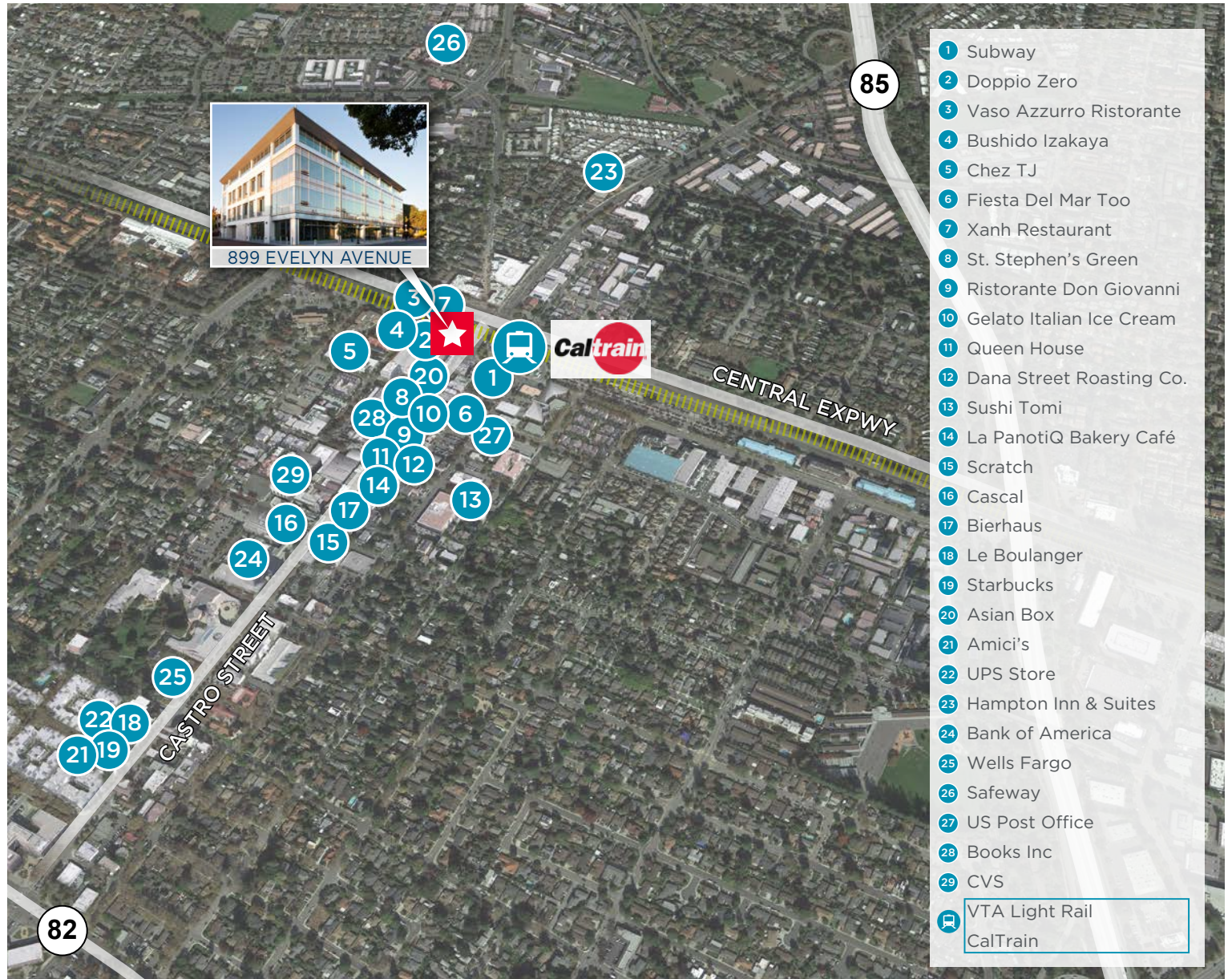




# 899

WEST EVELYN  
MOUNTAIN VIEW

# amenities



899 EVELYN AVENUE

CALTRAIN

CENTRAL EXPWY

CASTRO STREET

85

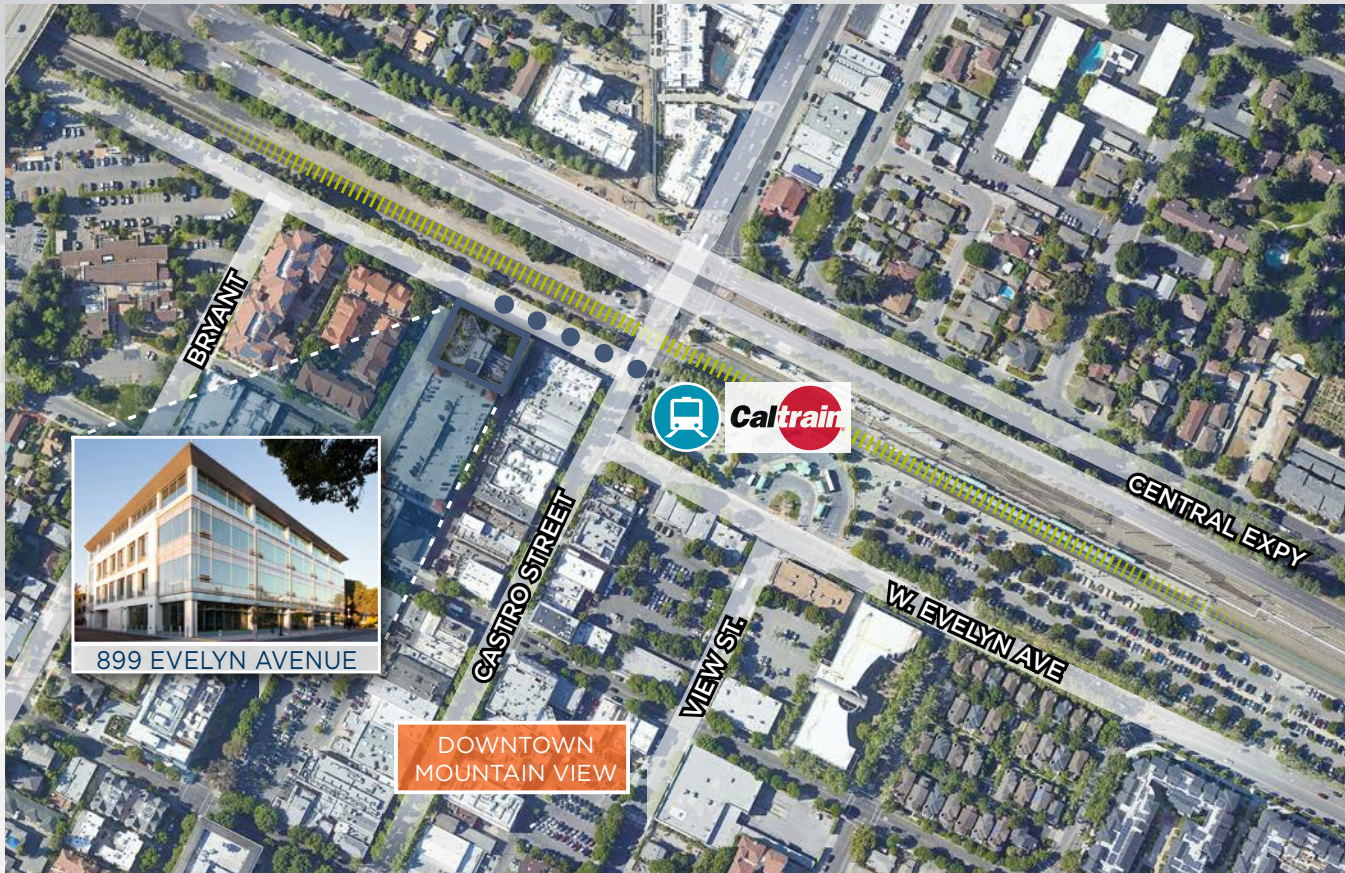
82

- 1 Subway
- 2 Doppio Zero
- 3 Vaso Azzurro Ristorante
- 4 Bushido Izakaya
- 5 Chez TJ
- 6 Fiesta Del Mar Too
- 7 Xanh Restaurant
- 8 St. Stephen's Green
- 9 Ristorante Don Giovanni
- 10 Gelato Italian Ice Cream
- 11 Queen House
- 12 Dana Street Roasting Co.
- 13 Sushi Tomi
- 14 La PanotiQ Bakery Café
- 15 Scratch
- 16 Cascal
- 17 Bierhaus
- 18 Le Boulanger
- 19 Starbucks
- 20 Asian Box
- 21 Amici's
- 22 UPS Store
- 23 Hampton Inn & Suites
- 24 Bank of America
- 25 Wells Fargo
- 26 Safeway
- 27 US Post Office
- 28 Books Inc
- 29 CVS

VTA Light Rail  
CalTrain

# be connected

SHORT WALK TO CALTRAIN STATION ● ● ●





# 899

WEST EVELYN

MOUNTAIN VIEW

## David Hiebert

Managing Principal

+1 650 320 0250

david.hiebert@cushwake.com

Lic #01189320

## Julie T. Golino

Associate

+1 408 572 4153

julie.golino@cushwake.com

Lic #01392415

## Roger Gage

Executive Managing Director

+1 408 572 4112

roger.gage@cushwake.com

Lic #01153662



1950 University Avenue, Suite 220

East Palo Alto, California 94303

main +1 650 852 1200

fax +1 650 856 1098

[cushmanwakefield.com](http://cushmanwakefield.com)

