

SPACE | FOR LEASE

\$29 / SF + NNN



6400 WEST MEMORIAL ROAD, OKLAHOMA CITY, OK 73142

1.64 ACRES MOL | ZONED: C-3, COMMERCIAL

INVESTOR HIGHLIGHTS

- 1.65 acres with 355 ft of frontage along Memorial
- Traffic Counts: 18,879 vehicles per day on Memorial Road & 32,226 vehicles per day on Kilpatrick Turnpike
- Great Visibility from Kilpatrick Turnpike
- Suite H & I have patio area
- Suite I has drive-thru capacity
- Easy and convenient with access points from Memorial and MacArthur
- Assortment of Restaurants, businesses, and roof tops in area
- Close Proximity to Integris ProCure, Mercy Hospital, and Heart Hospital
- Under construction, completing early Summer 24
- 137 parking spaces

SUITE SQFT

- Suite A 1381 SF
- Suite B 1427 SF
- Suite C 1401 SF
- Suite D 1427 SF
- Suite E 1404 SF
- Suite F 1427 SF
- Suite G 1385 SF
- Suite H 1462 SF
- Suite I 1450 SF



ROBIN O'GRADY

ROBIN@CALIBERPROPERTYGROUP.COM

405 314 3877

SEAN O'GRADY

SEAN@SEANOGRADY.COM

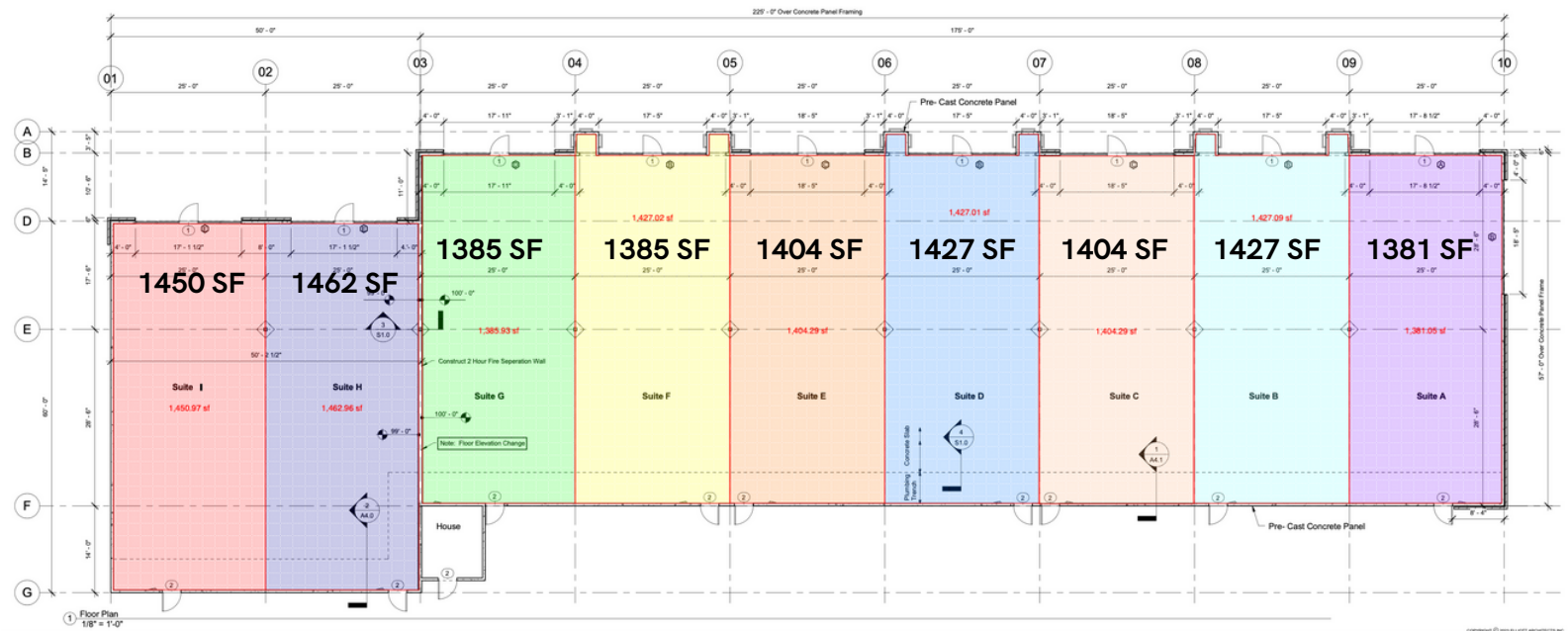
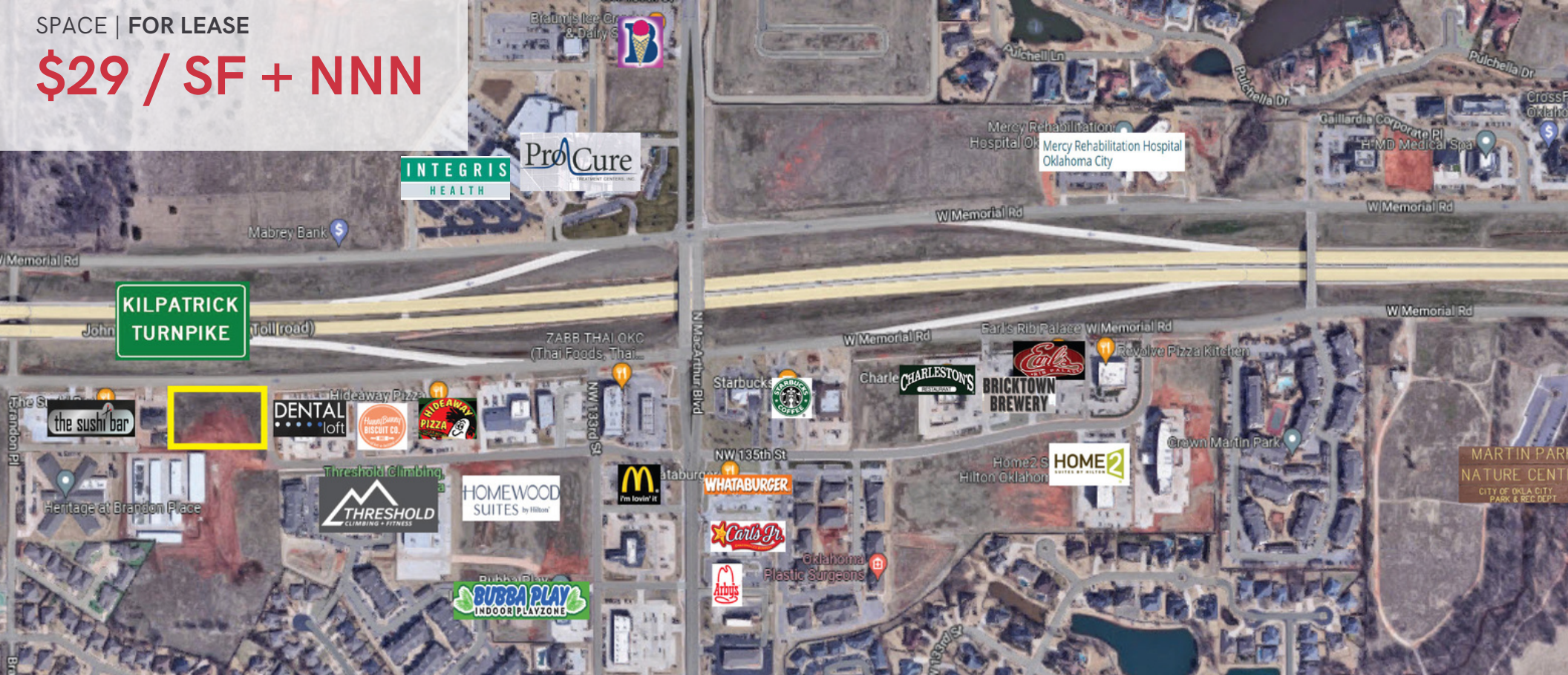
405 314 3777

CALIBERPROPERTYGROUP.COM

OFFICE: 405 463 1994

SPACE | FOR LEASE

\$29 / SF + NNN



1 Floor Plan 1/8" = 1'-0"