



COLMAN BUILDING

811 FIRST AVENUE
SEATTLE, WASHINGTON

www.colmanbuilding.com

Cavan O'Keefe

206.395.2903

cavan.okeefe@ngkf.com

David Marks

425.753.6759

david.marks@ngkf.com



BUILDING HIGHLIGHTS

- ◆ Historic building updated with modern conveniences
- ◆ Common kitchen facility
- ◆ Operable windows throughout
- ◆ Excellent access to I-5, Metro buses and Water taxi
- ◆ Direct access to the Colman ferry dock via skybridge
- ◆ Numerous restaurants and retail amenities within walking distance
- ◆ Direct access to the revitalized waterfront
- ◆ On-site building management
- ◆ Building conference room
- ◆ Showers & secure bike storage
- ◆ Starbucks, Quiznos, and UPS Store on site





BRAND NEW FINISHES
& SPEC SUITES
AVAILABLE FOR
IMMEDIATE
OCCUPANCY!

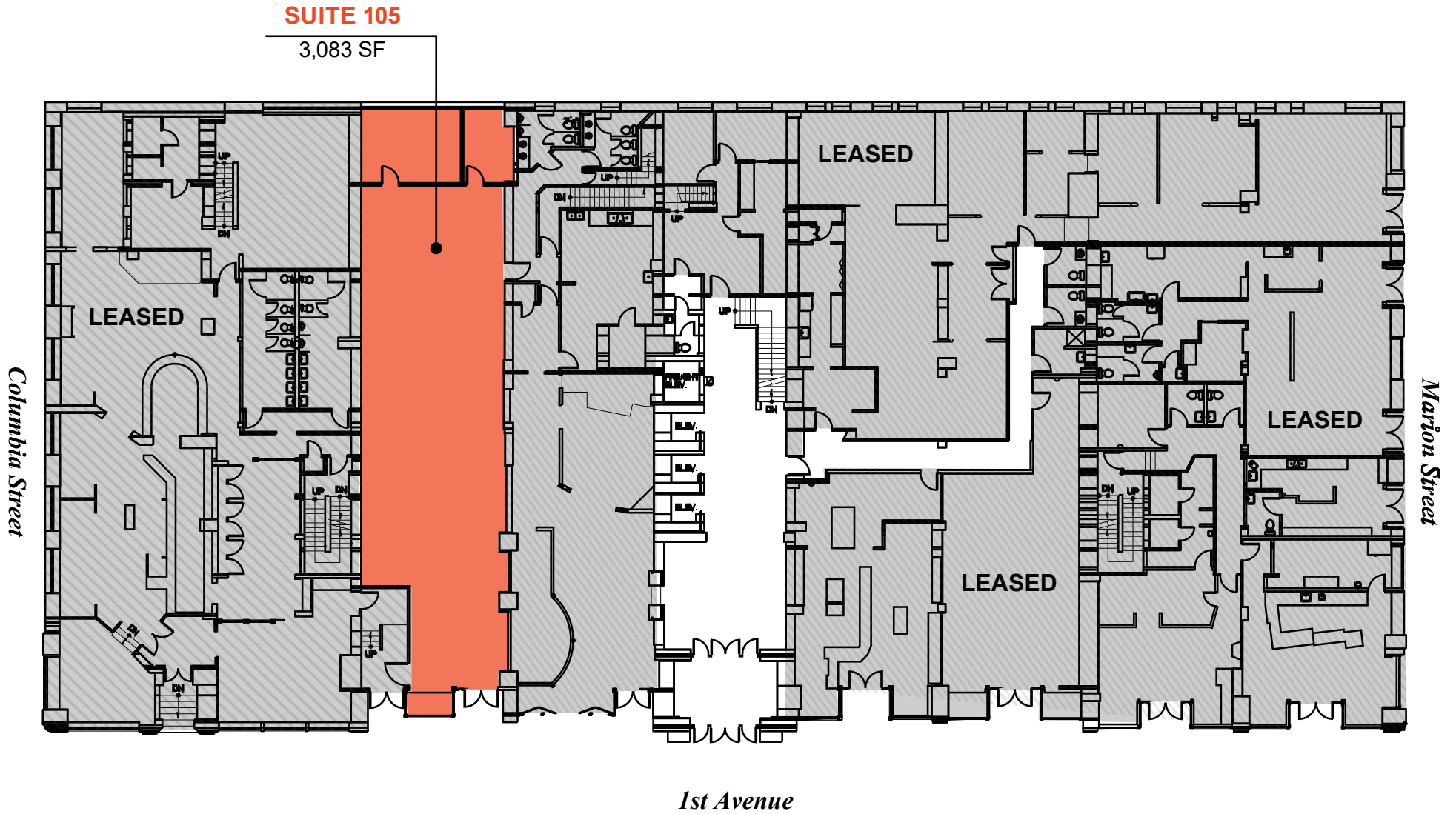
CURRENT AVAILABILITIES

SPACE	SIZE	AVAILABILITY
<u>Suite 105</u>	3,083 SF	Plug and play Creative space with tall ceilings Furniture available
<u>Suite 200</u>	2,862 SF	Available now New spec ready
<u>Suite 201</u>	1,465 SF	Available now New spec ready
<u>Suite 224</u>	525 SF	Available now New spec ready
<u>Suite 454</u>	1,445 SF	Available now New spec ready
<u>Suite 456</u>	1,631 SF	Available now New spec ready
<u>Suite 475</u>	504 SF	Available now New spec ready
<u>Suite 520</u>	1,357-7,781 SF	Divisible
<u>Suite 560</u>	272 SF	Available now
<u>Suite 570</u>	1,506-6,691 SF	Divisible
<u>Suite 615</u>	1,790 SF	Available now New spec ready
<u>Suite 640</u>	1,439 SF	Available now



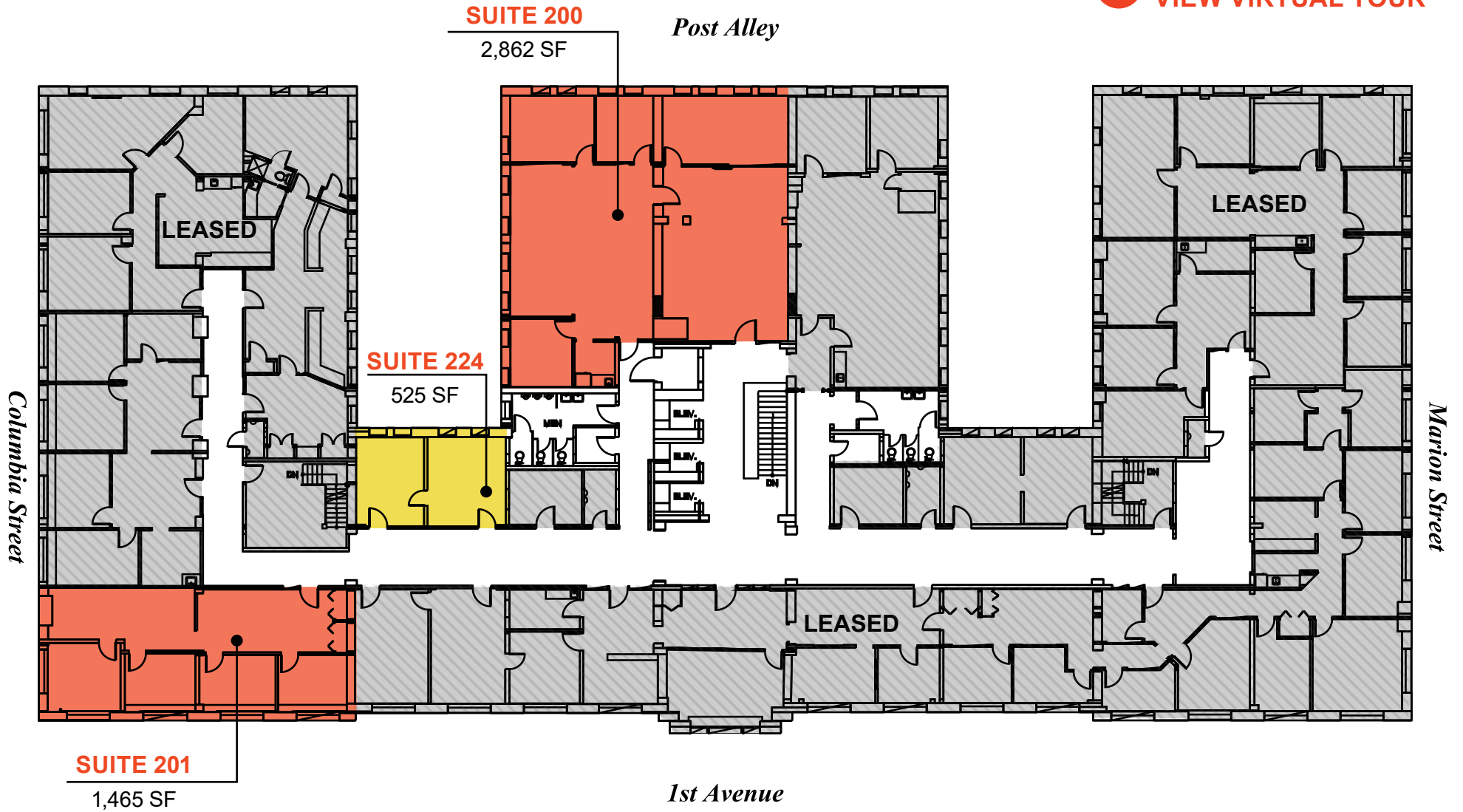
**CLICK ON SUITE NUMBER
TO VIEW VIRTUAL TOUR**

BUILDING FLOORPLANS



BUILDING FLOORPLANS

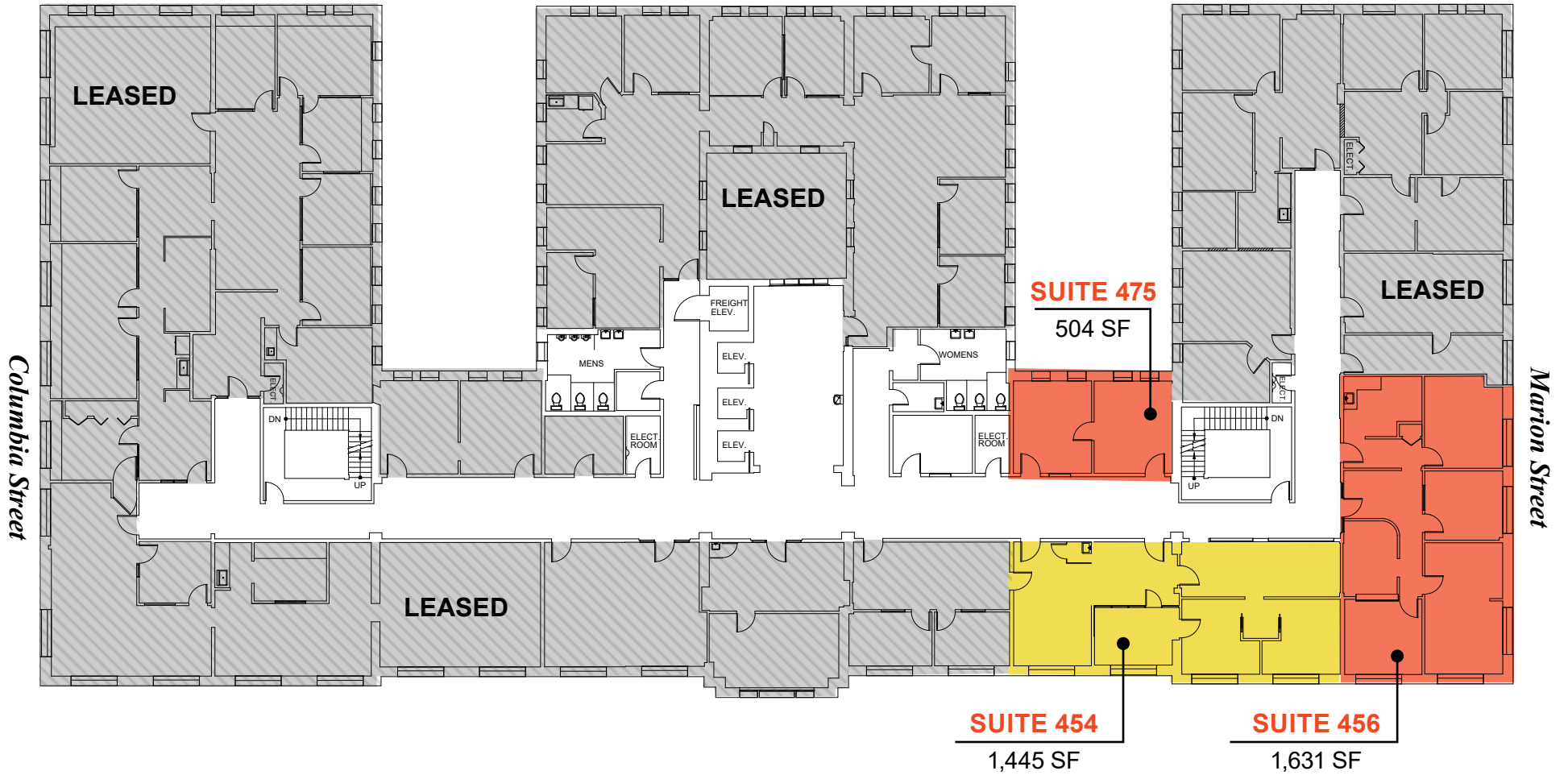
 **CLICK ON SUITE TO
VIEW VIRTUAL TOUR**



BUILDING FLOORPLANS

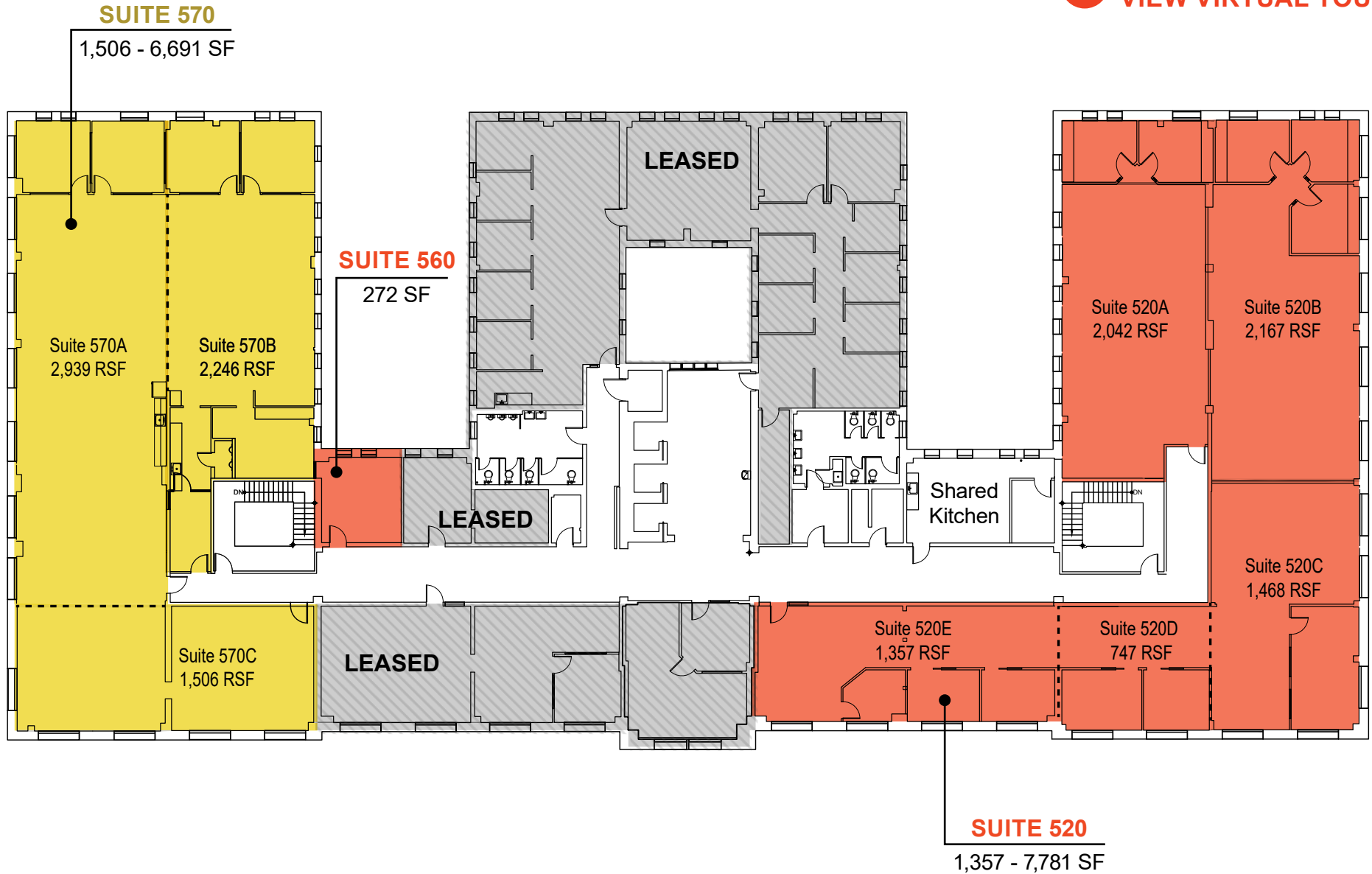
 **CLICK ON SUITE TO
VIEW VIRTUAL TOUR**

Post Alley



BUILDING FLOORPLANS

 **CLICK ON SUITE TO
VIEW VIRTUAL TOUR**

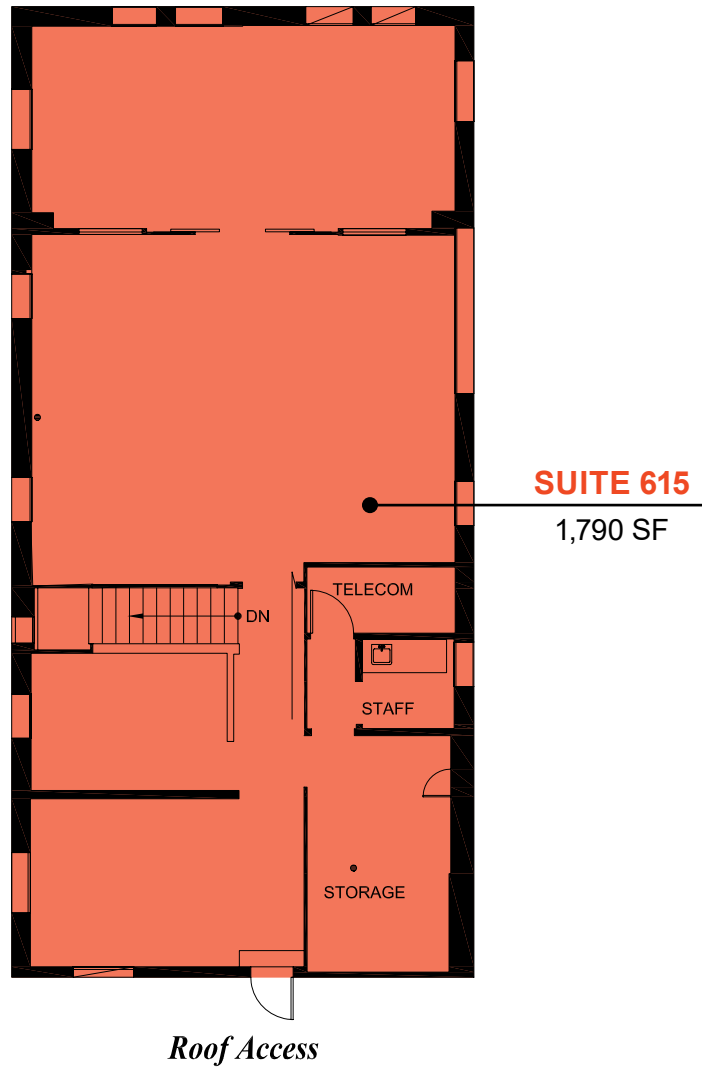


BUILDING FLOORPLANS

 **CLICK ON SUITE TO
VIEW VIRTUAL TOUR**




BUILDING FLOORPLANS




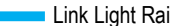


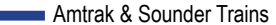
TRANSPORTATION & AMENITIES MAP

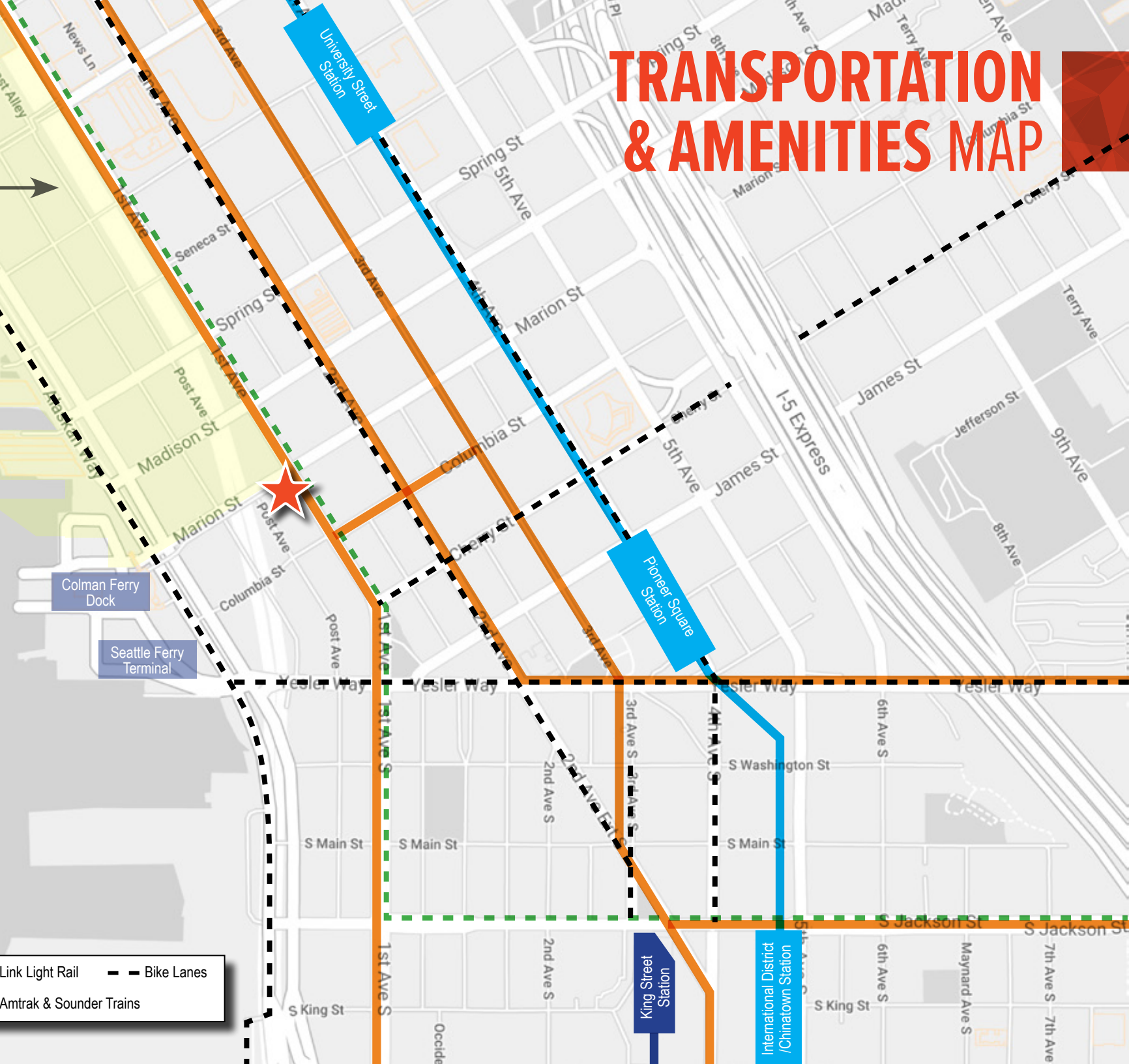

WATERFRONT REVITALIZATION
Est. completion 2022-2023


50+
RESTAURANTS
within 3 blocks


10+
COFFEE SHOPS
within 3 blocks


12
HOTELS
within 1 mile

-  Major Bus Lines
-  Link Light Rail
-  Bike Lanes
-  Seattle Street Car
-  Amtrak & Sounder Trains



Colman Ferry Dock
Seattle Ferry Terminal

www.colmanbuilding.com

COLMAN BUILDING

811 FIRST AVENUE
SEATTLE , WASHINGTON

 **Newmark
Knight Frank**

Cavan O'Keefe
206.395.2903
cavan.okeefe@ngkf.com

David Marks
425.753.6759
david.marks@ngkf.com

The distributor of this communication is performing acts for which a real estate license is required. The information contained herein has been obtained from sources deemed reliable but has not been verified and no guarantee, warranty or representation, either express or implied, is made with respect to such information. Terms of sale or lease and availability are subject to change or withdrawal without notice. 18-1023_5/19