

MAIN SERVICE - 400 AMP 3P 4W 120/240 V

PANEL "L" 120/240 VOLT, 3 PHASE, 3 WIRE
225 AMP BUS
SURFACE MOUNTED

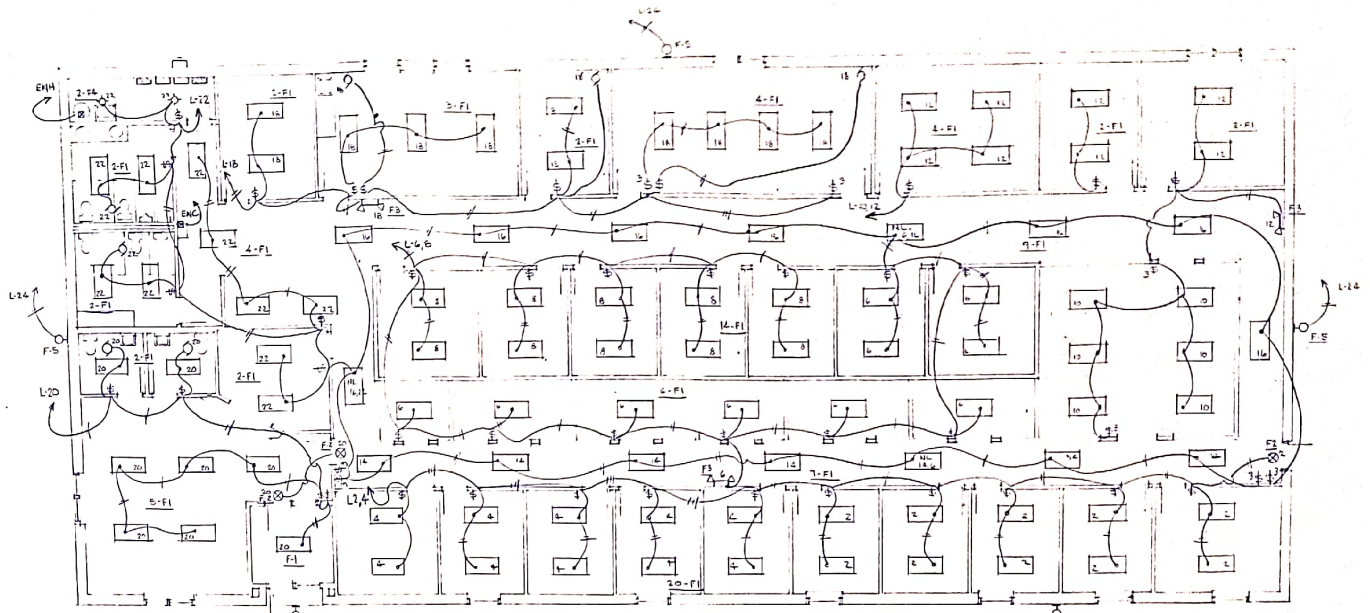
CIR NO	AMPS	DESCRIPTION	WIRE	WIRE	DESCRIPTION	AMPS	CIR NO
1	200	Recessed	"	"	120V/1	2	
2	200	"	"	"	120V/2	4	
3	200	"	"	"	120V/3	6	
4	200	"	"	"	120V/4	8	
5	200	"	"	"	120V/5	10	
6	200	"	"	"	120V/6	12	
7	200	"	"	"	120V/7	14	
8	200	"	"	"	120V/8	16	
9	200	"	"	"	120V/9	18	
10	200	"	"	"	120V/10	20	
11	200	"	"	"	120V/11	22	
12	200	"	"	"	120V/12	24	
13	200	"	"	"	120V/13	26	
14	200	"	"	"	120V/14	28	
15	200	"	"	"	120V/15	30	
16	200	"	"	"	120V/16	32	
17	200	"	"	"	120V/17	34	
18	200	"	"	"	120V/18	36	
19	200	"	"	"	120V/19	38	
20	200	"	"	"	120V/20	40	
21	200	"	"	"	120V/21	42	
22	200	"	"	"	120V/22	44	
23	200	"	"	"	120V/23	46	
24	200	"	"	"	120V/24	48	
25	200	"	"	"	120V/25	50	
26	200	"	"	"	120V/26	52	
27	200	"	"	"	120V/27	54	
28	200	"	"	"	120V/28	56	
29	200	"	"	"	120V/29	58	
30	200	"	"	"	120V/30	60	
31	200	"	"	"	120V/31	62	
32	200	"	"	"	120V/32	64	
33	200	"	"	"	120V/33	66	
34	200	"	"	"	120V/34	68	
35	200	"	"	"	120V/35	70	
36	200	"	"	"	120V/36	72	
37	200	"	"	"	120V/37	74	
38	200	"	"	"	120V/38	76	
39	200	"	"	"	120V/39	78	
40	200	"	"	"	120V/40	80	
41	200	"	"	"	120V/41	82	
42	200	"	"	"	120V/42	84	

PANEL "P" 120/240 VOLT, 3 PHASE, 4 WIRE
225 AMP BUS
SURFACE MOUNTED

CIR NO	AMPS	DESCRIPTION	WIRE	WIRE	DESCRIPTION	AMPS	CIR NO
1	100	Recessed	"	"	120V/1	1	
2	100	"	"	"	120V/2	2	
3	100	"	"	"	120V/3	3	
4	100	"	"	"	120V/4	4	
5	100	"	"	"	120V/5	5	
6	100	"	"	"	120V/6	6	
7	100	"	"	"	120V/7	7	
8	100	"	"	"	120V/8	8	
9	100	"	"	"	120V/9	9	
10	100	"	"	"	120V/10	10	
11	100	"	"	"	120V/11	11	
12	100	"	"	"	120V/12	12	
13	100	"	"	"	120V/13	13	
14	100	"	"	"	120V/14	14	
15	100	"	"	"	120V/15	15	
16	100	"	"	"	120V/16	16	
17	100	"	"	"	120V/17	17	
18	100	"	"	"	120V/18	18	
19	100	"	"	"	120V/19	19	
20	100	"	"	"	120V/20	20	
21	100	"	"	"	120V/21	21	
22	100	"	"	"	120V/22	22	
23	100	"	"	"	120V/23	23	
24	100	"	"	"	120V/24	24	
25	100	"	"	"	120V/25	25	
26	100	"	"	"	120V/26	26	
27	100	"	"	"	120V/27	27	
28	100	"	"	"	120V/28	28	
29	100	"	"	"	120V/29	29	
30	100	"	"	"	120V/30	30	
31	100	"	"	"	120V/31	31	
32	100	"	"	"	120V/32	32	
33	100	"	"	"	120V/33	33	
34	100	"	"	"	120V/34	34	
35	100	"	"	"	120V/35	35	
36	100	"	"	"	120V/36	36	
37	100	"	"	"	120V/37	37	
38	100	"	"	"	120V/38	38	
39	100	"	"	"	120V/39	39	
40	100	"	"	"	120V/40	40	
41	100	"	"	"	120V/41	41	
42	100	"	"	"	120V/42	42	

FIXTURE SCHEDULE

FIXTURE	LAMP TYPE	MOUNTING	MANUFACTURER
F-1	A-400/105	Recess	Metalux 105 SUNLITE Energy Efficient Ballast
F-2	2-200	Wall	Sunlite 200/100 White Ball Light
F-3	2-3 in PHOS	Wall	Sunlite 10-1 White Emergency Light
F-4	1-100/119	Ceiling	Sunlite Ballast/Paralaxin
F-5	100W WPS	Wall	100W WPS w/Photo Cell Wall Switch/Unit
F-6	150W WPS	Wall	150W WPS w/Photo Cell Wall Switch/Unit



LIGHTING FLOOR PLAN 1/8"=1'-0"



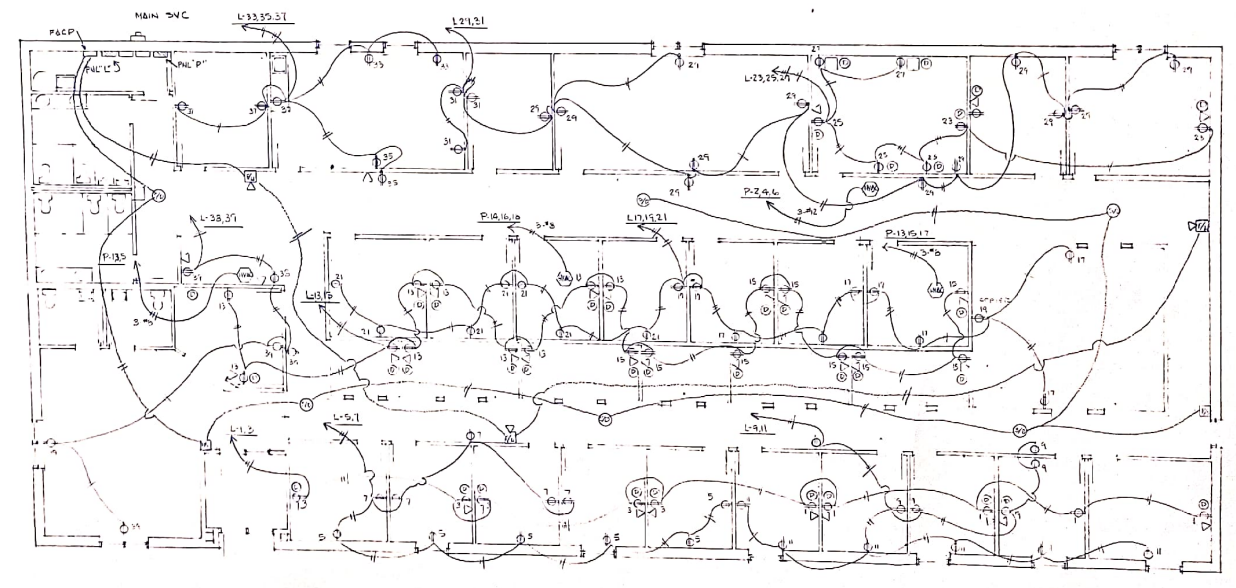
ELECTRICAL SYMBOLS

- ⊙ - RECESSED CEILING FIXTURE
- ⊙ - BRACKET OR PENDANT CEILING FIXTURE
- ⊙ - BRACKET FIXTURE
- ⊙ - RECESSED FLUORESCENT FIXTURE
- ⊙ - PENDANT OR PENDANT FLUORESCENT FIXTURE
- ⊙ - BRACKET EXIT LIGHT
- ⊙ - CEILING EXIT LIGHT
- - LIGHT TRACER
- ⊙ - EXTERIOR POLE FIXTURE
- ⊙ - SPOT LIGHT FIXTURE
- - SINGLE POLE SWITCH
- - THREE WAY SWITCH
- - FOUR WAY SWITCH
- - SWITCH WITH FLUOR LIGHT
- - KEY OPERATED SWITCH
- - DIMMER SWITCH
- - SWITCH WITH GROUNDING DUPLEX RECEPTACLE
- - DISCONNECT SWITCH
- ⊙ - GROUNDING DUPLEX RECEPTACLE
- ⊙ - GROUNDING SINGLE RECEPTACLE
- ⊙ - SPECIAL GROUNDING RECEPTACLE SIZE AND TYPE AS SPECIFIED ON PLANS
- ⊙ - GROUNDING FLUSH FLOOR RECEPTACLE
- ⊙ - PLUG STRIP VENTRY TYPE AND MOUNTING
- ⊙ - UNDERFLOOR DUCT WITH ANCHOR BOX
- ⊙ - MOTOR CONNECTION, VERIFY EXACT LOCATION AND HEIGHT OF ALL MOTORS BEFORE PROCEEDING
- ⊙ - OUTLET WITH FINAL CONNECTIONS TO EQUIPMENT, EQUIPMENT FURNISHED BY OTHERS (FBO), PROVIDE NECESSARY RECEPTACLE, SAFETY SWITCH, WIRING ETC FOR COMPLETE OPERATING INSTALLATION, VERIFY EXACT LOCATION AND HEIGHT BEFORE BEGINNING
- ⊙ - CONDUIT SHUB ABOVE GRID PROVIDE BAR & SINGLE HOLE COVER PLATE FOR SPEED SYSTEM CABLES
- ⊙ - RJ-11 JACK & BOX FOR PHONES

GENERAL NOTES & SPECIFICATIONS

- All work shall be in accordance with National Electrical Code and other applicable codes and standards.
- Raceways
 - Below grade or beneath concrete slab; rigid galv. steel, PVC, rigid PVC.
 - Above grade locations; EMT
- Wire and Cable A. Wire size shall be #12 min. wire shall be copper and THHN/THWN.
- Wire Color Code:
 - A-Phase-Black; B-Phase-Red;
 - C-Phase-Blue; Neut.-White;
 - Ground-Green.
- All materials shall be UL approved.
- Panel directory shall be furnished after job is completed reflecting all as-built conditions.

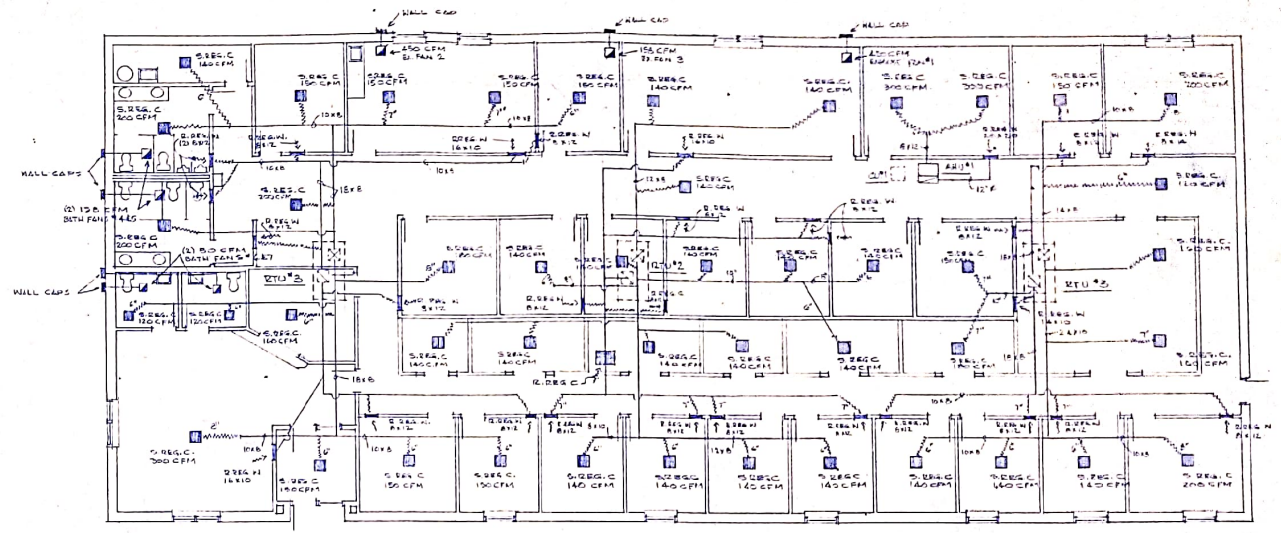
- CONTRACTOR SHALL INSTALL FIRE ALARM & SMOKE DETECTION SYSTEM IN ACCORDANCE WITH NFPA 72
- ⊙ - PACP FIRE ALARM CONTROL PANEL
 - ⊙ - FIRE ALARM PULL STATION
 - ⊙ - SMOKE DETECTOR
 - ⊙ - FIRE HORN



ELECTRICAL POWER FLOOR PLAN 1/8"=1'-0"

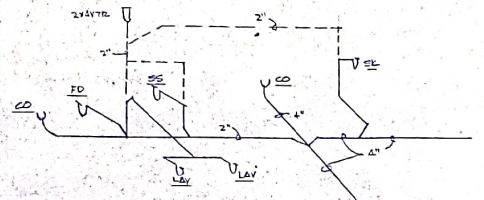
FIXTURES

- WC-1 Mansfield 129-35 toilet
Open front seat
- WC-2 Mansfield 118-35 Handicap toilet
closed seat with cover
- L-1 Mansfield 198R Round Self Raising Lav
Moen 4929 two handle faucet
1 1/2" P-trap
- L-2 Mansfield 2018H wall hung lavatory
Moen 4929 two handle faucet
1 1/2" P-trap
(set at 34" to riser for handicap)
- UR-1 Mansfield 375 Urinal
Sloan 186 flush valve
- SK-1 Elkay 22x22 stainless sink single bowl
Moen 7919 faucet
1 1/2" P-trap
- LT-1 Nutec wall hung laundry sink
Moen 4975 faucet
- EVC-1 Elkay EBFS-8 Wheelchair Accessible
- WH-1 Rheem 30 gallon 220V. water heater
3/4" relief valve
- SC-1 Mansfield 578-12 frost proof sillcock
- FD-1 Zurn 5" round floor drain strainer
- FCO. Plastic Odorties PCO-700 cleanouts

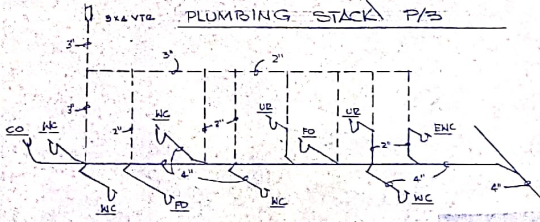


H.V.A.C. FLOOR PLAN 1/8" = 1'-0"

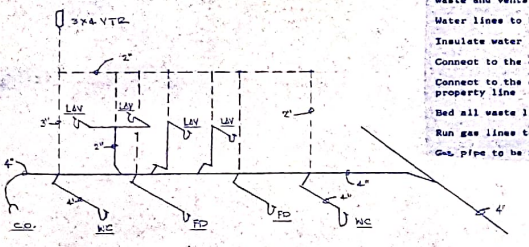
RTU 1-2-3	Lennox Model GC516-823 208-230 3PH
AHU #1	Model 24-RCUA
CU #1	Model CAS024KKB 208-230 1PH
FAN #1 & 2	Penn B2 - 110V. 450 CFM
FAN #3, 4, 5	Penn 24-158 110V at .25
FAN #6 & 7	688 50 CFM 110V



PLUMBING STACK P/3



PLUMBING STACK P/2



PLUMBING STACK P/1

Plumbing Spec

All work to conform to the Ill. State Plumbing Code

Waste and vents to be PVC

Water lines to be X type copper.

Insulate water lines above the ceiling

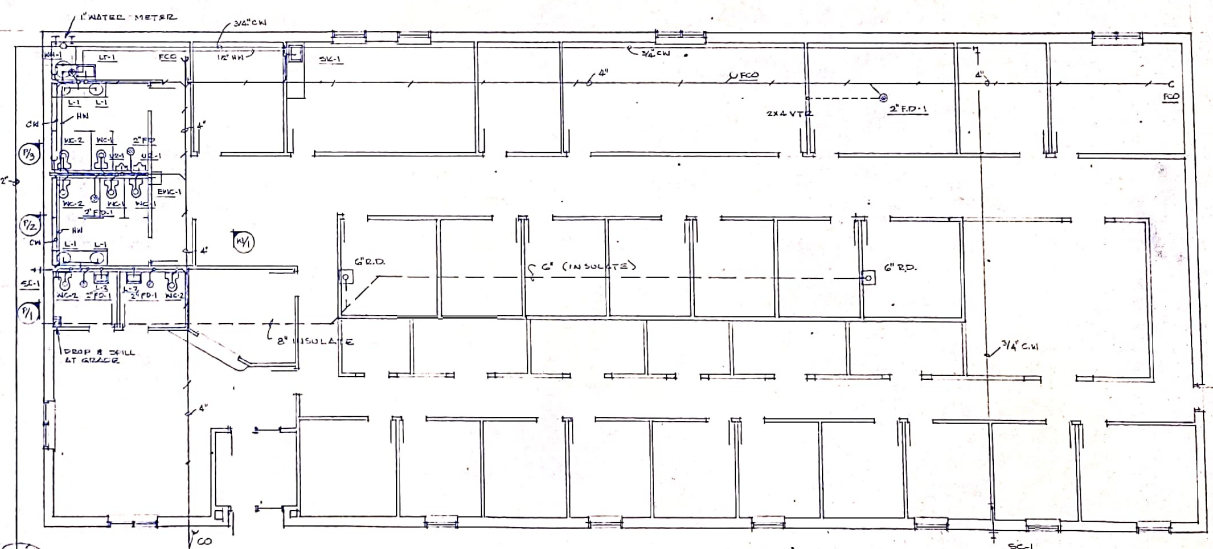
Connect to the existing 4" sewer at the property line

Connect to the existing 2" domestic water service at the property line

Bed all waste lines in sand and cover with sand up 6"

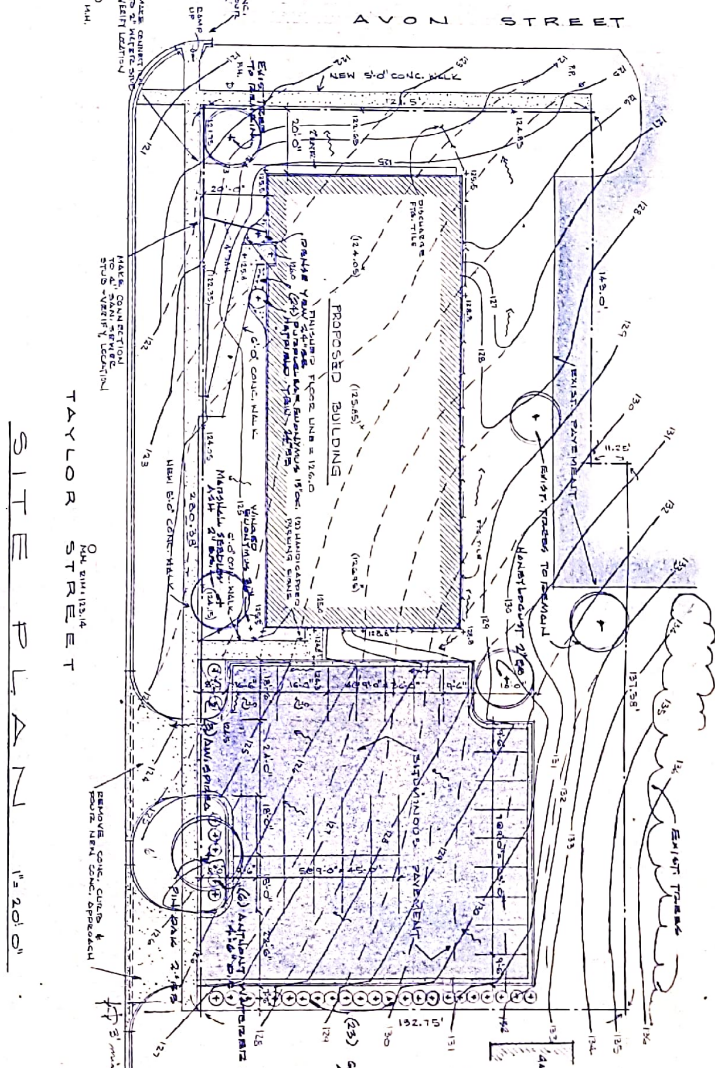
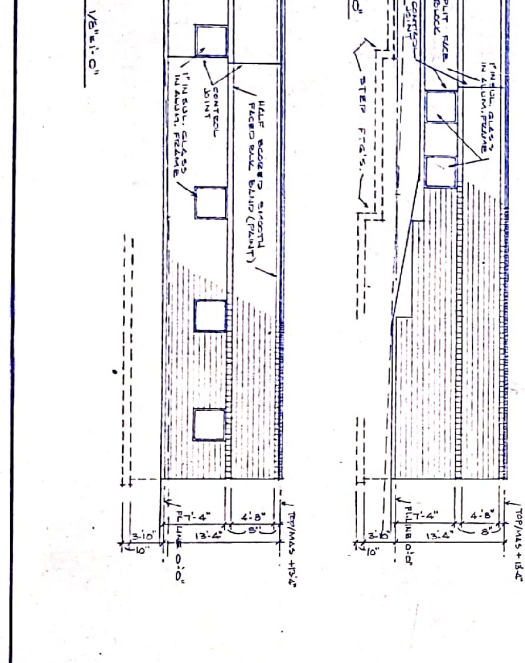
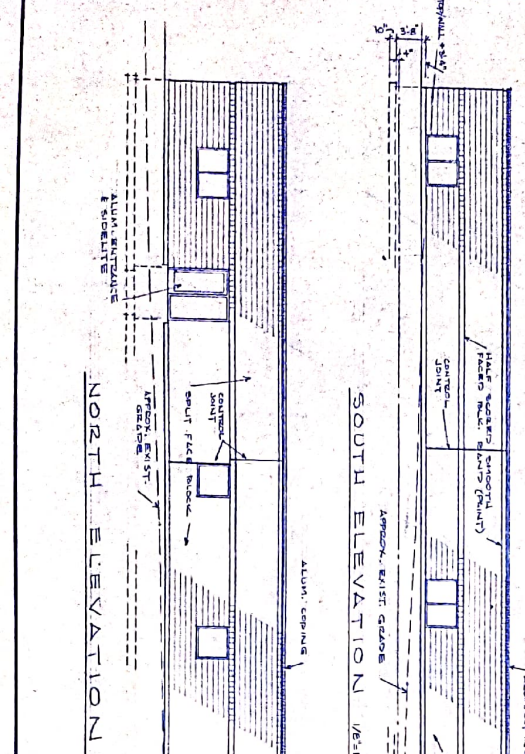
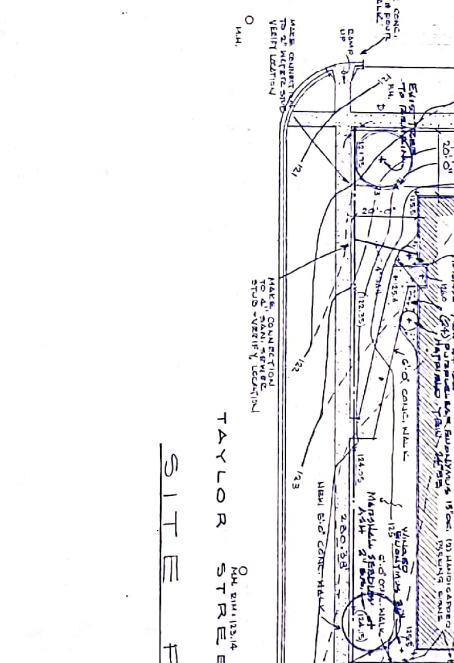
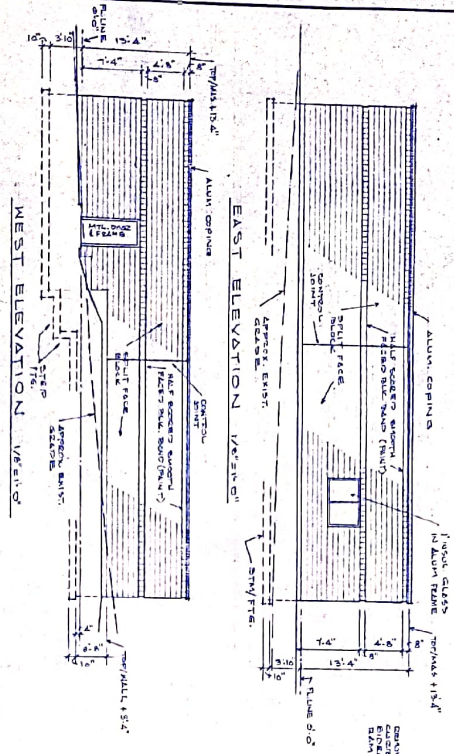
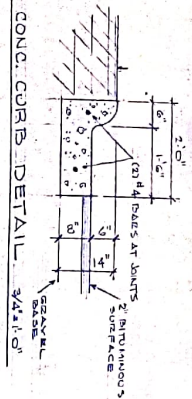
Run gas lines to the furnace from the meter

Gas pipe to be Sch. 40 threaded black pipe.



PLUMBING FLOOR PLAN 1/8" = 1'-0"





BUILDING DESIGN DATA

THIS BUILDING IS DESIGNED TO BECA CODE PROVISIONS

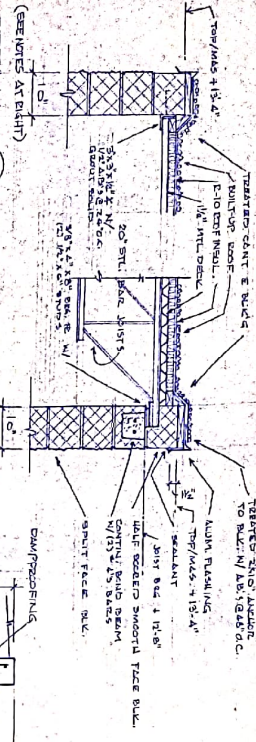
BUILDING LOCATION: ROCKFORD, ILLINOIS

BUILDING HEIGHT: ONE STORY 12' 6"

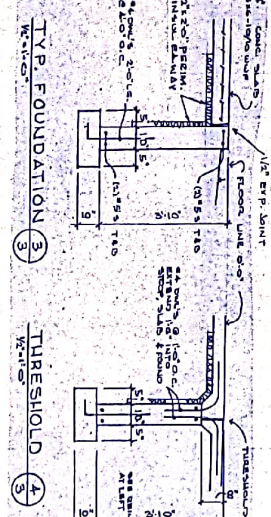
USE GROUP: B

TYPE OF CONSTRUCTION: 3B

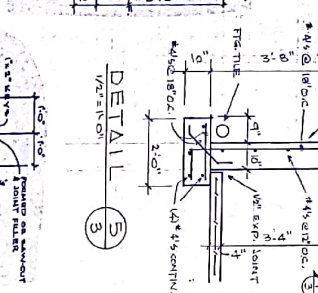
FLOOR AREA: 8475 SQ. FT.



DETAIL 1
SECTION



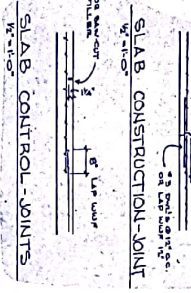
DETAIL 2
SECTION



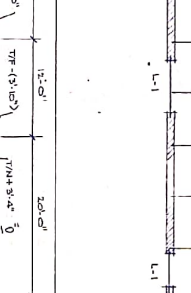
DETAIL 3
SECTION



STEPED FOOTING



SLAB CONSTRUCTION-JOINT



SLAB CONTROL-JOINT

STRUCTURAL STEEL:

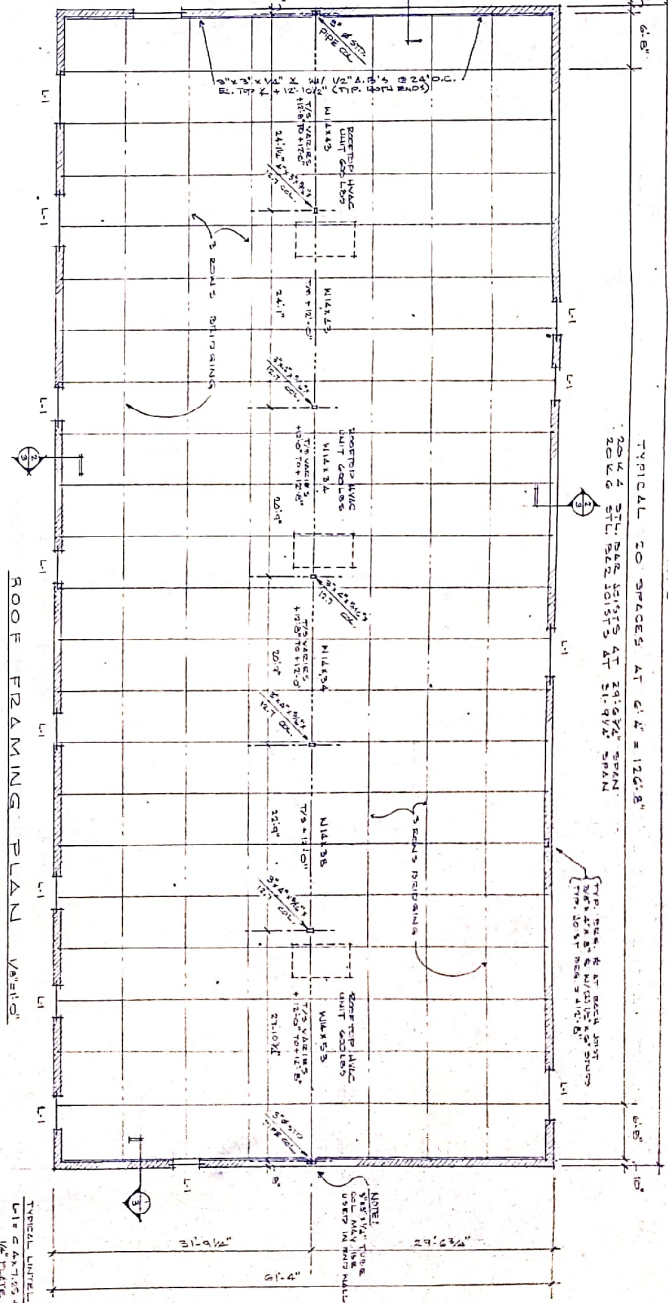
1. Structural steel shall be ASTM A992, except pipe columns shall be ASTM A513 Grade B. All structural and workmanship shall conform to the requirements of the AISC Specification for Structural Steel Buildings, 13th Edition, 2009.
2. Shop Connections: ASTM A325 HS bolts bearing type, or welded E70T Connections.
3. Field Connections: ASTM A325 HS bolts bearing type, or welded E70T and as detailed.
4. Bolts shall be 3/4" diameter unless otherwise noted.
5. Refer to Architectural Drawings and details for establishment of details, framing and connections.
6. Dimensions shown for mechanical openings, equipment, etc., are approximate and must be verified with the installing contractor.

CONCRETE:

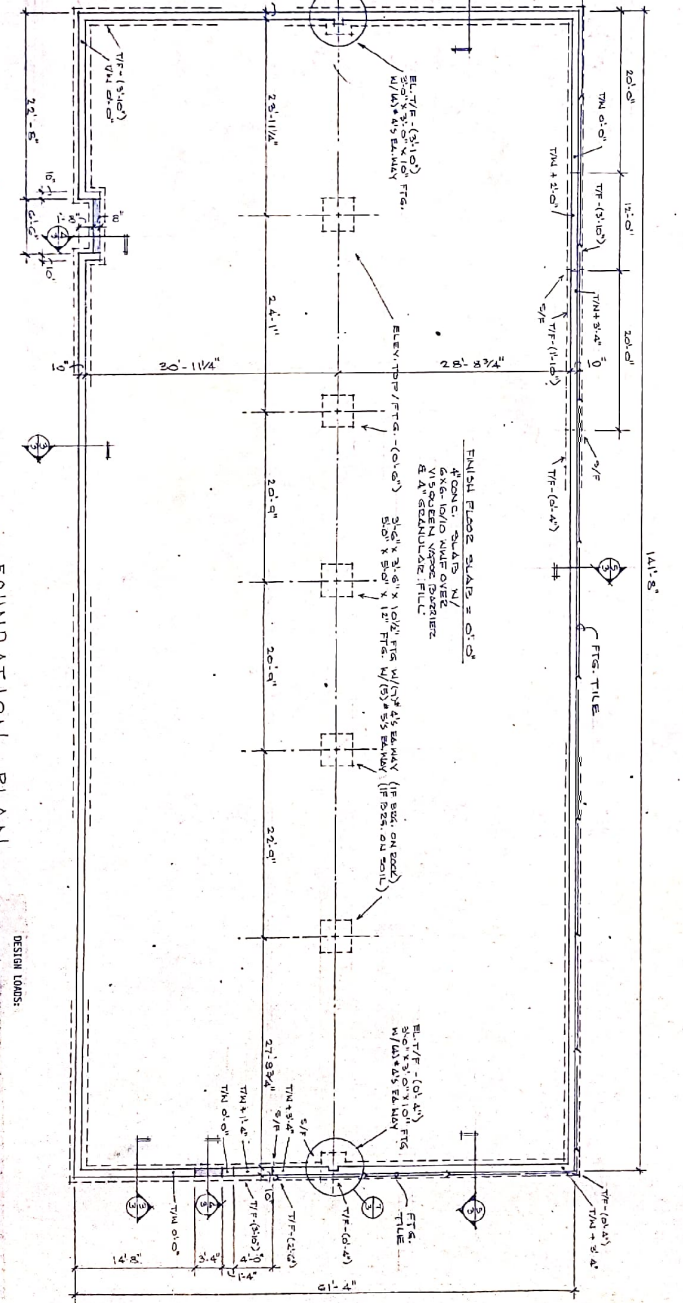
1. If not specifically referenced all concrete masonry units shall be solid load bearing units.
2. All concrete shall be placed in accordance with the requirements of the ACI 308R-11 Building Code Requirements for Reinforced Concrete, 2011 Edition.
3. All concrete shall have a minimum ultimate compressive strength of 3000 pounds per square inch at 28 days.
4. All concrete shall be placed in accordance with the requirements of the ACI 308R-11 Building Code Requirements for Reinforced Concrete, 2011 Edition.
5. All concrete shall be placed in accordance with the requirements of the ACI 308R-11 Building Code Requirements for Reinforced Concrete, 2011 Edition.
6. All concrete shall be placed in accordance with the requirements of the ACI 308R-11 Building Code Requirements for Reinforced Concrete, 2011 Edition.

FOUNDATION:

1. All foundations shall conform to the American Institute of Steel Construction, Inc. (AISC) Specification for Structural Steel Buildings, 13th Edition, 2009.
2. Erection of footings is shown on the Plans. Verify all bearing areas with the contractor.
3. No footings shall be poured without the Architect's approval.
4. All concrete shall be placed in accordance with the requirements of the ACI 308R-11 Building Code Requirements for Reinforced Concrete, 2011 Edition.
5. All concrete shall be placed in accordance with the requirements of the ACI 308R-11 Building Code Requirements for Reinforced Concrete, 2011 Edition.
6. All concrete shall be placed in accordance with the requirements of the ACI 308R-11 Building Code Requirements for Reinforced Concrete, 2011 Edition.



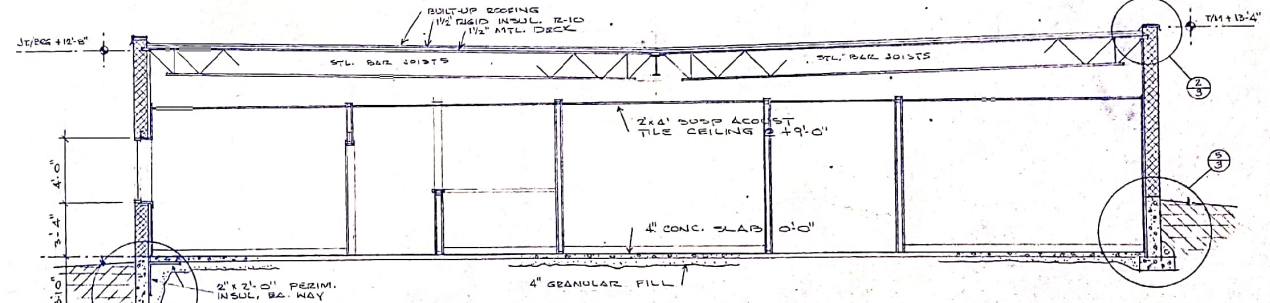
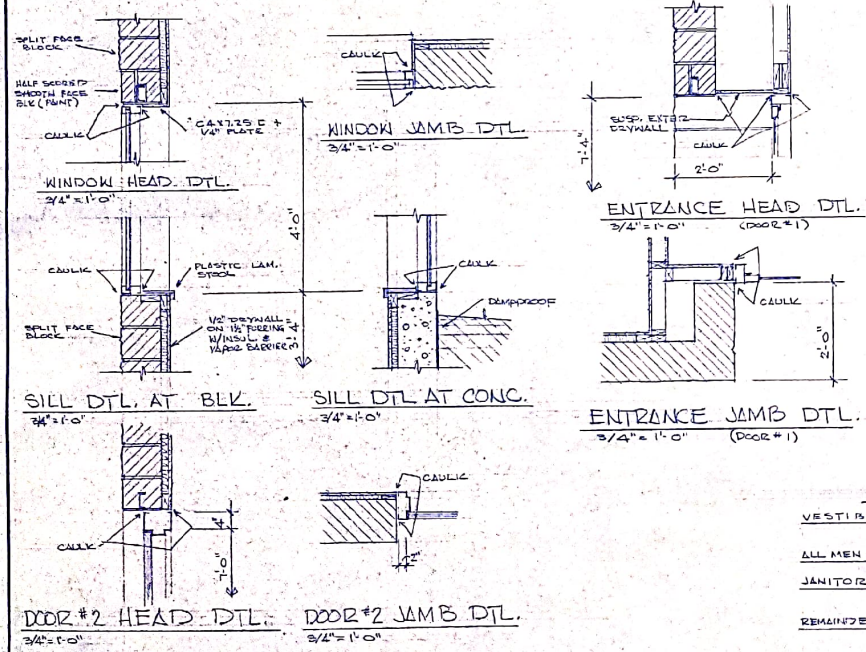
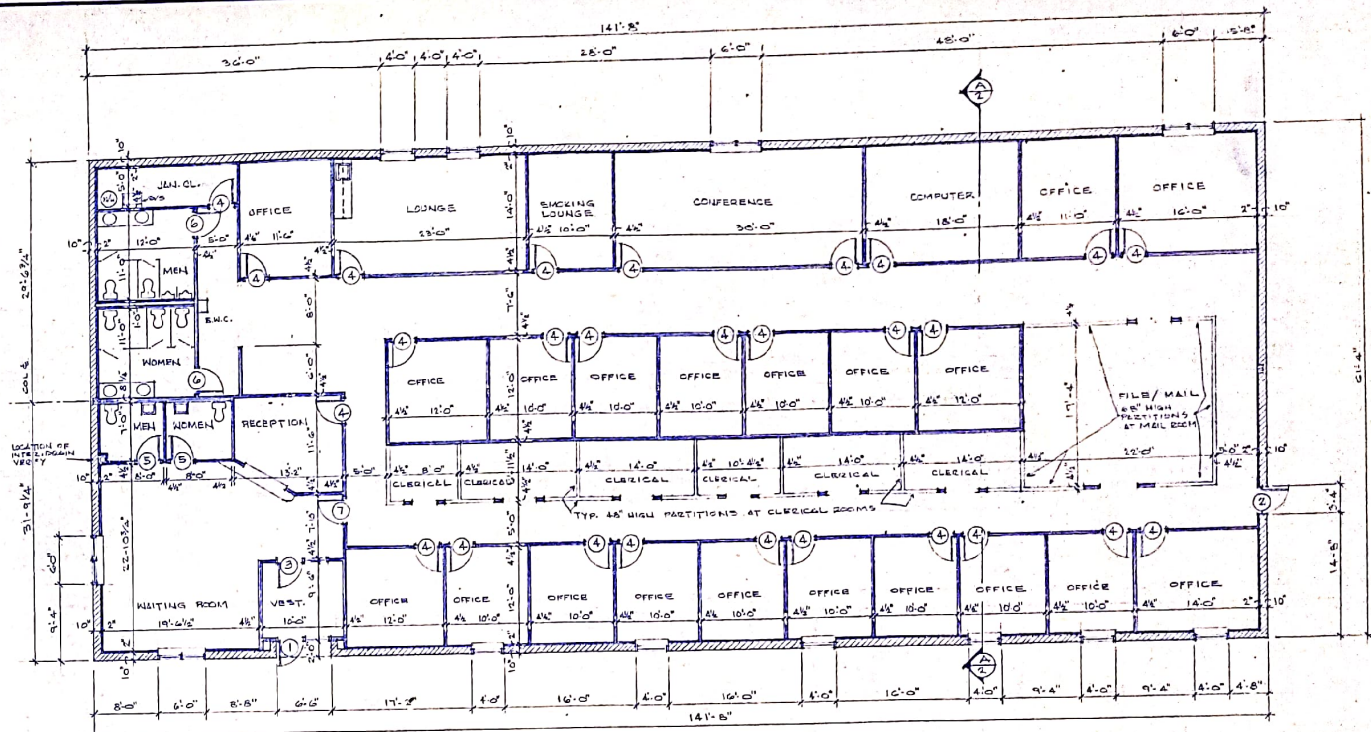
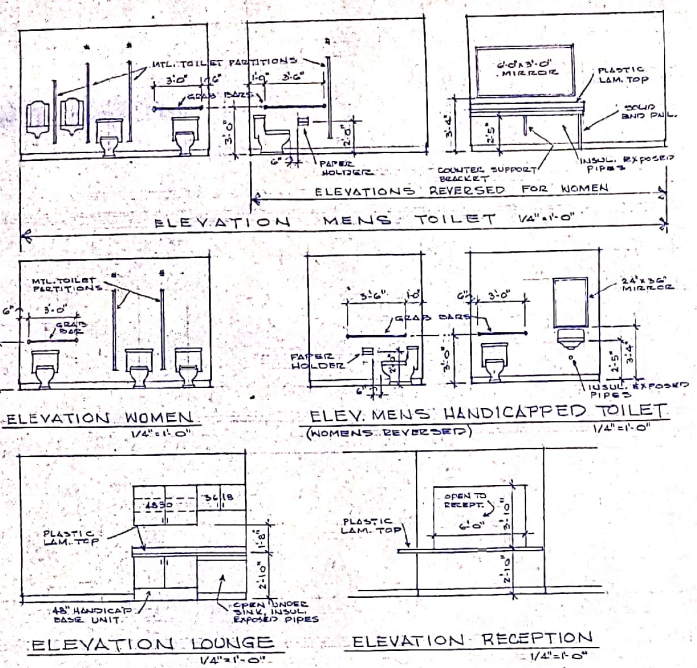
ROOF FRAMING PLAN



FOUNDATION PLAN

DESIGN NOTES:

1. Foundation design is based on 3000 pcf bearing pressure at footings.
2. The design live loads:
3. Wind design loads based on ASCE 7-05 min wind speed and the appropriate modification factors.

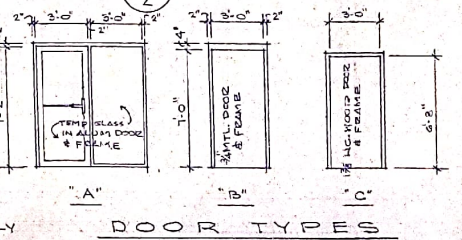


ROOM FINISH SCHEDULE

VESTIBULE	SHEET VINYL FLOORING W/ 4" VINYL BASE. WALLS PAINTED DRYWALL W/ 2x4 SUSP ACoust. TILE CEILING AT +9'-0".
ALL MEN & WOMEN	SHEET VINYL FLOORING W/ 4" VINYL BASE. WALL FACING PAINTED DRYWALL. 8" x 8" GFL. LT.
JANITOR CL.	SHALLO CONCR. FLOOR W/ 4" VINYL BASE. WALLS PAINTED DRYWALL W/ 2x4 SUSP. ACoust. TILE CEILING AT +9'-0".
REMAINDER OF BLDG	CARPET FLOOR W/ 4" VINYL BASE. WALLS PAINTED DRYWALL W/ 2x4 SUSP. ACoust. TILE CEILING AT +9'-0".

DOOR TYPES

DOOR #1	TYPE "A" W/ PUSH-PULL, KEY DEAD BOLT, WEATHERSTRIPPING, CLOSER & HANDICAPPED THRESHOLD.
DOOR #2	TYPE "B" W/ LOCK SET, WEATHERSTRIPPING, HANDICAPPED THRESHOLD & CLOSER.
DOOR #3	TYPE "A" W/ PUSH-PULL & CLOSER.
DOOR #4	TYPE "C" W/ PASSAGE SET.
DOOR #5	TYPE "C" W/ PRIVACY SET & CLOSER.
DOOR #6	TYPE "C" W/ PRIVACY SET & CLOSER.
DOOR #7	TYPE "C" W/ LOCKSET & CLOSER.



NOTE:
ALL LOCKSETS & LATCH SETS SHALL COMPLY WITH ANS1 111.1 PARAG. 4.13.9