

169 - 183 Mt. Pleasant Avenue, Newark, NJ

+ / - 31,429 SF on 0.859 Acres

For Sale / Lease



- Block 440 / Lot 7
- Concrete Block Construction
- Tar & Gravel Roof
- 2 Tailboards, 2 Drive-Ins
- 3 Phase, 480 Volt Power
- Fenced Parking & Loading Area
- Ceilings: 21,000 SF @ 12' - 16' | 9,000 SF @ 27'
- Stone Fabrication Shop | Spray Booth | Metal Room
- Taxes - \$30,260.00

LOCATION

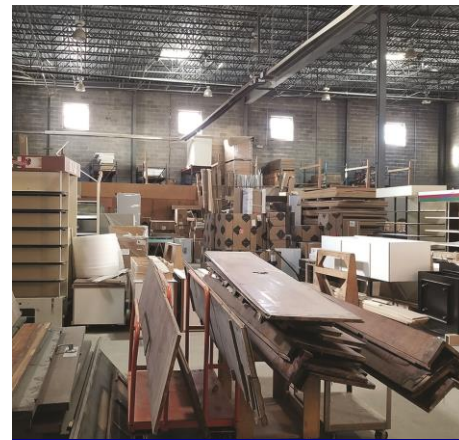
- 1 Block from Route 21
- 4 Minutes (1.6 miles) to I-280
- 18 Minutes (14.4 Miles) to NJ Turnpike
- 18 Minutes (7.8 Miles) to Port Newark/Elizabeth
- 13 Minutes (5 Miles) to Newark Liberty Airport



Showroom



Workshop



High Bay Addition

Exclusive Brokers

Suzanne Tharaldsen, Vice President | suzanne@bussel.com | 908.577.1676

Jim Hodgkins, Vice President | jhodgkins@bussel.com | 908.276.4100

Bussel Realty Corp. | Licensed Real Estate Broker | 2 Ethel Road, Edison, NJ 08817 | bussel.com

Information herein obtained from sources deemed reliable, but no guarantee of its accuracy is made by the Company. Subject to error, omission or withdrawal without notice.



