



FOR LEASE



14,406 SF



AVAILABLE  
MAY 1, 2020

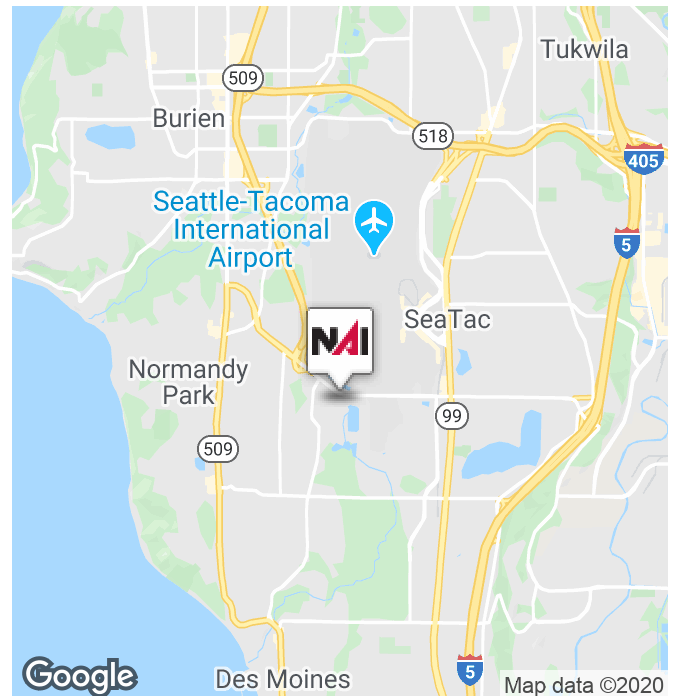


## 16th Avenue Industrial Building

18915 16th Ave S SeaTac, WA 98188

### Property Highlights

- 14,406 SF available (5,324 SF office located on two floors)
- 5 DH & 3 GL door
- 23' clear height
- Lease Rate:
  - \$0.78 PSF, NNN Shell
  - \$0.95 PSF, NNN Office
- Can be combined with adjacent space to create 36,750 SF single tenant building
- Available May 1, 2020



**Kent Channing**

Partner | 425.586.5628

kchanning@nai-psp.com

**Arie Salomon, SIOR, CCIM**

Principal | 425.586.5636

asalomon@nai-psp.com



<https://www.nai-psp.com>

THE INFORMATION SUPPLIED HEREIN IS FROM SOURCES WE DEEM RELIABLE. IT IS PROVIDED WITHOUT ANY REPRESENTATION, WARRANTY OR GUARANTEE, EXPRESSED OR IMPLIED, AS TO ITS ACCURACY. PROSPECTIVE BUYER OR TENANT SHOULD CONDUCT AN INDEPENDENT INVESTIGATION AND VERIFICATION OF ALL MATTERS DEEMED TO BE MATERIAL, INCLUDING, BUT NOT LIMITED TO, STATEMENTS OF INCOME AND EXPENSES. CONSULT YOUR ATTORNEY, ACCOUNTANT OR OTHER PROFESSIONAL ADVISOR.



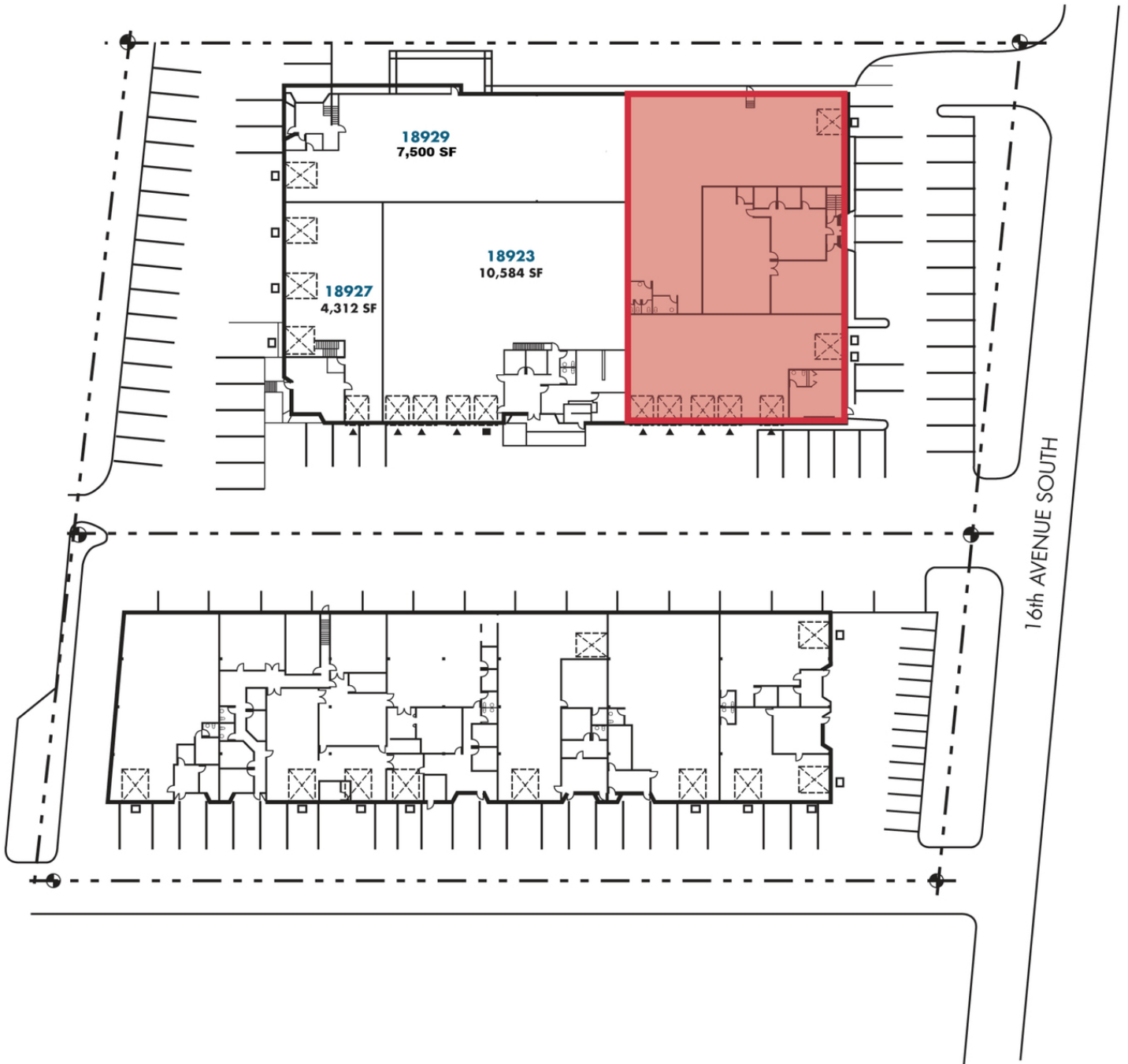
FOR LEASE



14,406 SF



AVAILABLE  
MAY 1, 2020



**Kent Channing**

Partner | 425.586.5628

kchanning@nai-psp.com

**Arie Salomon, SIOR, CCIM**

Principal | 425.586.5636

asalomon@nai-psp.com

