

401 NW MURRAY ROAD  
LEE'S SUMMIT, MISSOURI 64063

OFFICE OR RETAIL FOR LEASE | 7,235± SF AVAILABLE

## Former National American University Space

### PROPERTY FEATURES

- Excellent US 50 Highway signage and visibility
- Traffic count of 67,707 CPD along US 50 Highway
- Strong demographics and population
- Monument signage available



DEMOGRAPHICS	2 MILES	3 MILES	5 MILES
ESTIMATED POPULATION	25,478	45,926	94,349
EST. HOUSEHOLDS	11,650	19,443	37,828
EST. HOUSEHOLD INCOME	\$78,902	\$89,359	\$91,513

For more information, please contact:

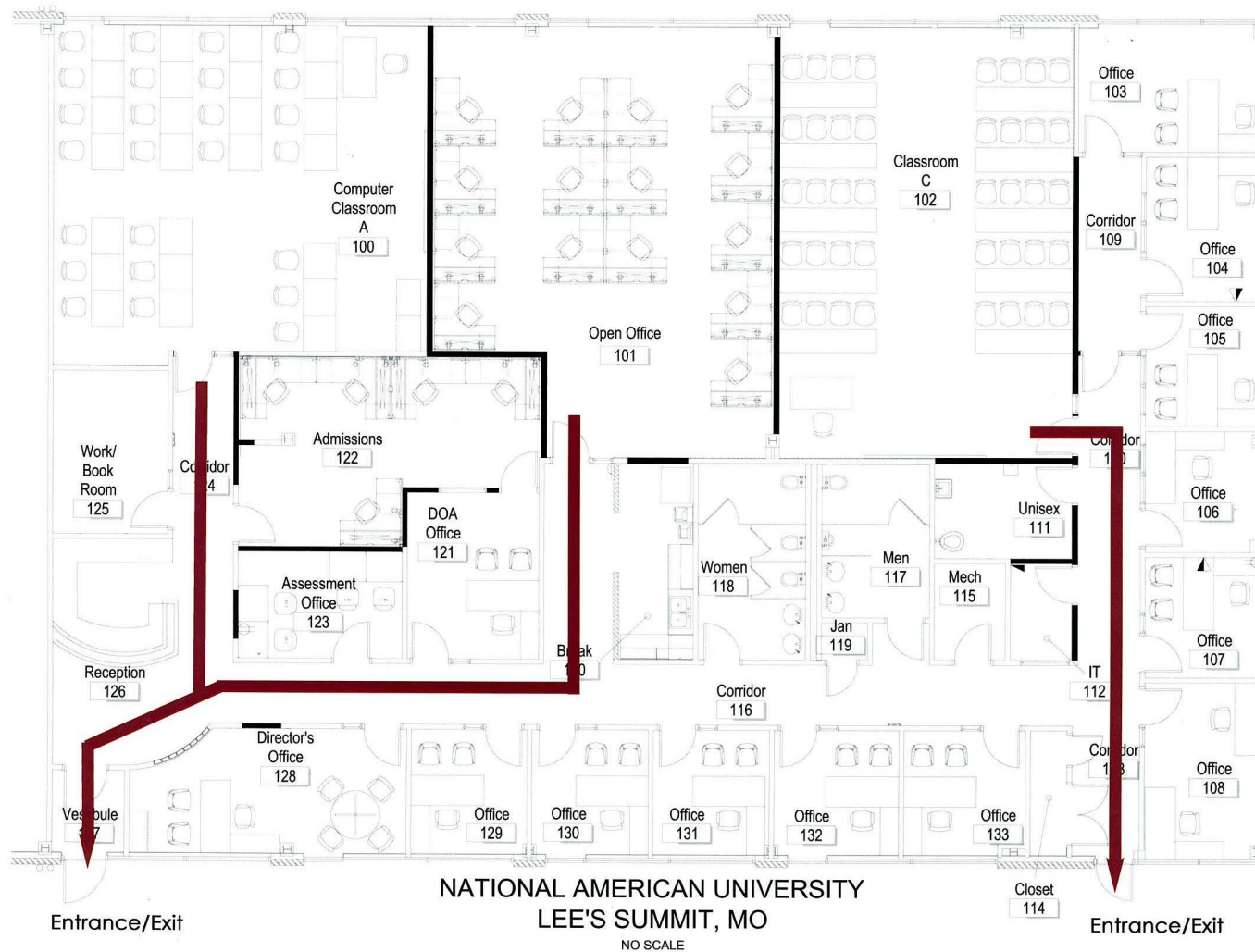
**SHER BLANDFORD**  
Retail Brokerage  
816.936.8525 direct  
[sblandford@kessingerhunter.com](mailto:sblandford@kessingerhunter.com)

**JOE HEINZLER**  
Office Brokerage  
816.936.8584 direct  
[jheinzler@kessingerhunter.com](mailto:jheinzler@kessingerhunter.com)

**KESSINGER/HUNTER & COMPANY, LC**  
2600 Grand Boulevard, Suite 700  
Kansas City, MO 64108  
816.842.2690  
[www.kessingerhunter.com](http://www.kessingerhunter.com)

401 NW MURRAY ROAD, LEE'S SUMMIT, MO 64063

For Lease



For more information, please contact:

**SHER BLANDFORD**  
Retail Brokerage  
816.936.8525 direct  
[sblandford@kessingerhunter.com](mailto:sblandford@kessingerhunter.com)

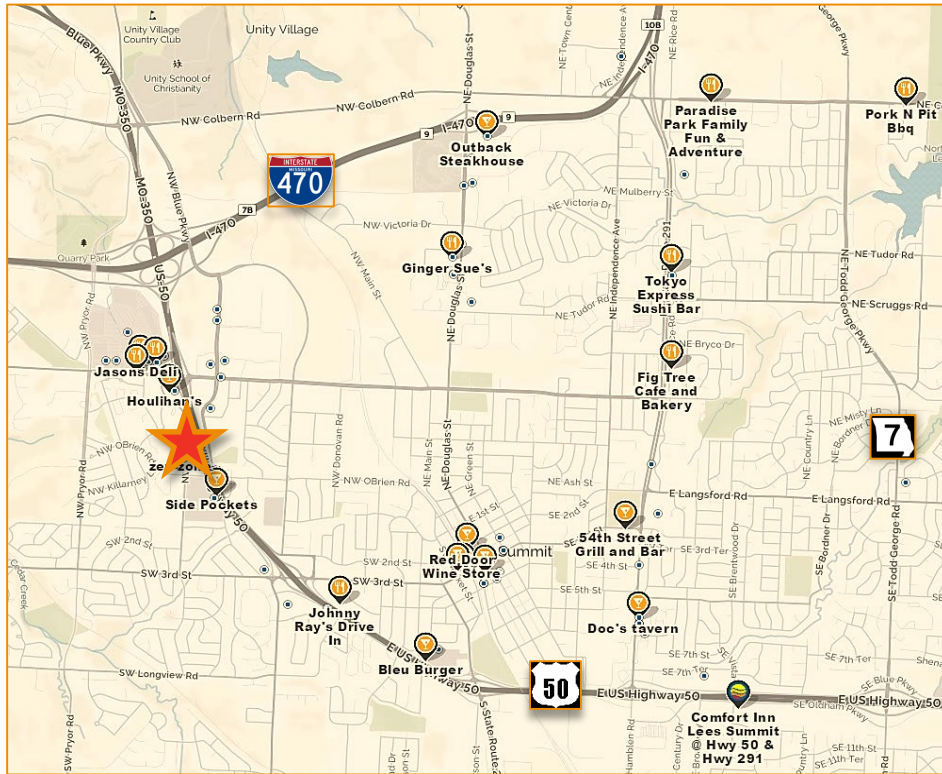
**JOE HEINZLER**  
Office Brokerage  
816.936.8584 direct  
[jheinzler@kessingerhunter.com](mailto:jheinzler@kessingerhunter.com)

**KESSINGER/HUNTER & COMPANY, LC**  
2600 Grand Boulevard, Suite 700  
Kansas City, MO 64108  
816.842.2690  
[www.kessingerhunter.com](http://www.kessingerhunter.com)



# 401 NW MURRAY ROAD, LEE'S SUMMIT, MO 64063

## For Lease



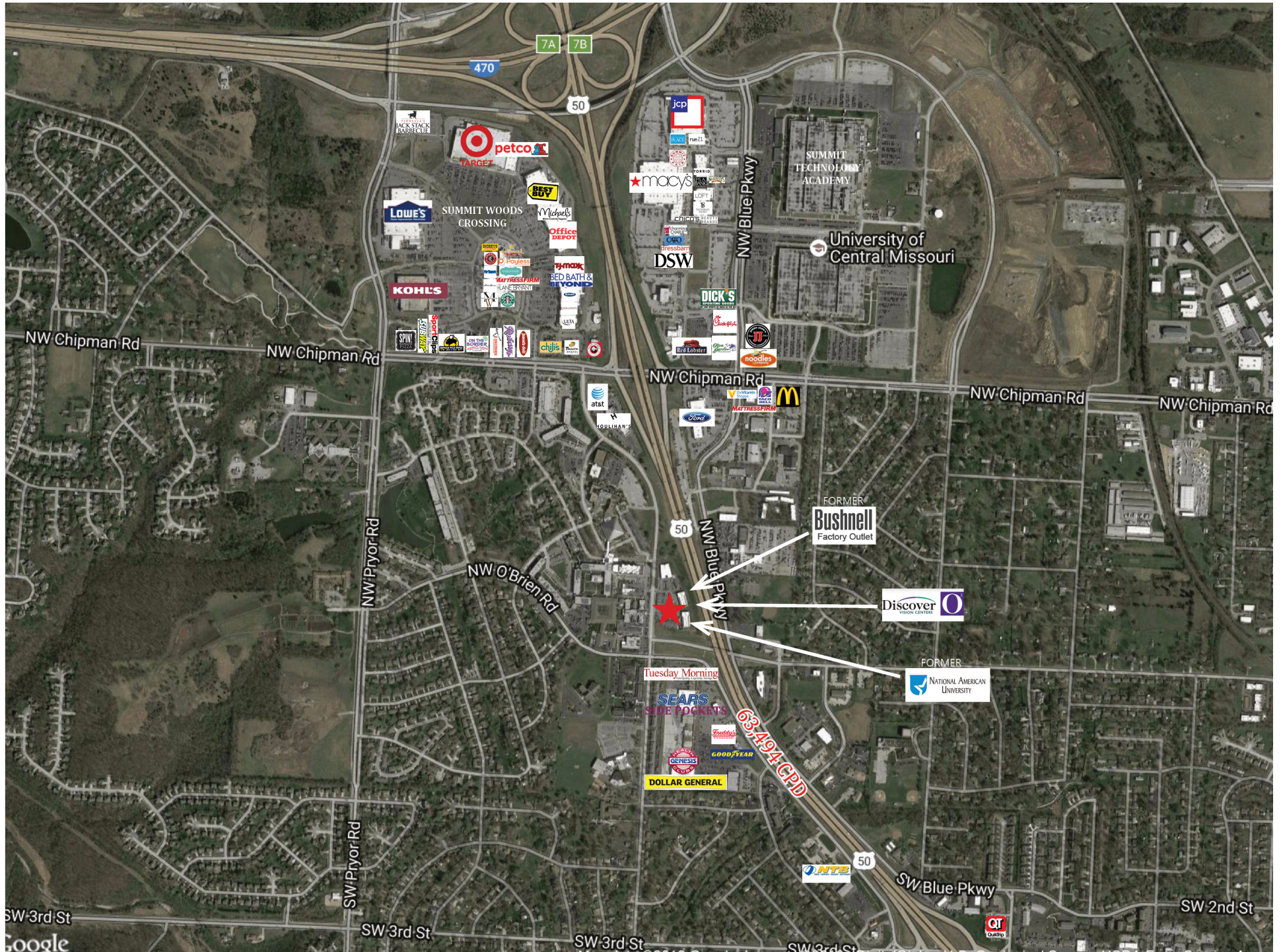
For more information, please contact:

**SHER BLANDFORD**  
Retail Brokerage  
816.936.8525 direct  
[sblandford@kessingerhunter.com](mailto:sblandford@kessingerhunter.com)

**JOE HEINZLER**  
Office Brokerage  
816.936.8584 direct  
[jheinzler@kessingerhunter.com](mailto:jheinzler@kessingerhunter.com)

**KESSINGER/HUNTER & COMPANY, LC**  
2600 Grand Boulevard, Suite 700  
Kansas City, MO 64108  
816.842.2690  
[www.kessingerhunter.com](http://www.kessingerhunter.com)





7A 7B

470

50

50

50

NW Chipman Rd

NW Chipman Rd

NW Chipman Rd

NW Chipman Rd

NW Chipman Rd

NW Pryor Rd

NW O'Brien Rd

NW Blue Pkwy

SW 3rd St

SW 3rd St

SW 3rd St

SW 3rd St

SW Blue Pkwy

SW 2nd St

Google



# SUMMARY PROFILE

2000-2010 Census, 2018 Estimates with 2023 Projections

Calculated using Weighted Block Centroid from Block Groups

Lat/Lon: 38.91971-94.4026

RS1

401 NW Murray Rd

Lee's Summit, MO 64081

2 mi radius    3 mi radius    5 mi radius

	2 mi radius	3 mi radius	5 mi radius
<b>POPULATION</b>			
2018 Estimated Population	25,478	45,926	94,349
2023 Projected Population	26,315	47,451	97,248
2010 Census Population	24,645	42,751	89,626
2000 Census Population	22,767	36,922	75,379
Projected Annual Growth 2018 to 2023	0.7%	0.7%	0.6%
Historical Annual Growth 2000 to 2018	0.7%	1.4%	1.4%
2018 Median Age	42.4	39.4	38
<b>HOUSEHOLDS</b>			
2018 Estimated Households	11,650	19,443	37,828
2023 Projected Households	11,853	19,803	38,504
2010 Census Households	10,607	17,192	34,162
2000 Census Households	9,782	14,868	28,504
Projected Annual Growth 2018 to 2023	0.3%	0.4%	0.4%
Historical Annual Growth 2000 to 2018	1.1%	1.7%	1.8%
<b>RACE AND ETHNICITY</b>			
2018 Estimated White	86.0%	84.9%	80.2%
2018 Estimated Black or African American	7.4%	8.2%	13.2%
2018 Estimated Asian or Pacific Islander	1.7%	2.0%	2.1%
2018 Estimated American Indian or Native Alaskan	0.4%	0.4%	0.3%
2018 Estimated Other Races	4.4%	4.4%	4.2%
2018 Estimated Hispanic	4.8%	4.9%	4.6%
<b>INCOME</b>			
2018 Estimated Average Household Income	\$78,902	\$89,359	\$91,513
2018 Estimated Median Household Income	\$68,146	\$79,120	\$81,090
2018 Estimated Per Capita Income	\$36,171	\$37,891	\$36,753
<b>EDUCATION (AGE 25+)</b>			
2018 Estimated Elementary (Grade Level 0 to 8)	1.5%	1.3%	1.3%
2018 Estimated Some High School (Grade Level 9 to 11)	3.7%	3.2%	3.3%
2018 Estimated High School Graduate	25.9%	23.0%	23.2%
2018 Estimated Some College	24.5%	24.4%	24.3%
2018 Estimated Associates Degree Only	8.7%	8.4%	8.7%
2018 Estimated Bachelors Degree Only	21.8%	24.3%	24.6%
2018 Estimated Graduate Degree	13.8%	15.4%	14.6%
<b>BUSINESS</b>			
2018 Estimated Total Businesses	1,489	2,665	3,736
2018 Estimated Total Employees	24,516	36,677	59,485
2018 Estimated Employee Population per Business	16.5	13.8	15.9
2018 Estimated Residential Population per Business	17.1	17.2	25.3

This report was produced using data from private and government sources deemed to be reliable. The information herein is provided without representation or warranty.