



Two Vented Restaurant Spaces In The Heart Of The West Village - NO KEY MONEY

118 CHRISTOPHER STREET

BETWEEN BEDFORD & BLEECKER STREETS

EAST STORE

Ground..... **1,000 Square Feet Approx.**
 Basement..... **700 Square Feet Approx.**
 Frontage..... **15'**
 Ceilings..... **10'**
 Term..... **10 Years**
 Possession..... **Immediate**
 Price..... **\$9,495/Month**

WEST STORE

Ground..... **1,000 Square Feet Approx.**
 Basement..... **700 Square Feet Approx.**
 Frontage..... **15'**
 Ceilings..... **10'**
 Term..... **10 Years**
 Possession..... **Immediate**
 Price..... **\$9,995/Month**

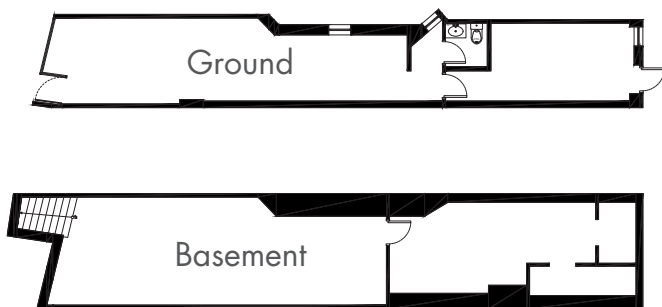
SPACE FEATURES:

- Classic bay windows
- Vented restaurant spaces with grease trap and gas
- Pretty West Village tree lined street with an eclectic group of interesting neighbors
- Directly across the street from the iconic Lucille Lortel Theater
- West store has interior staircase to basement
- No Key Money

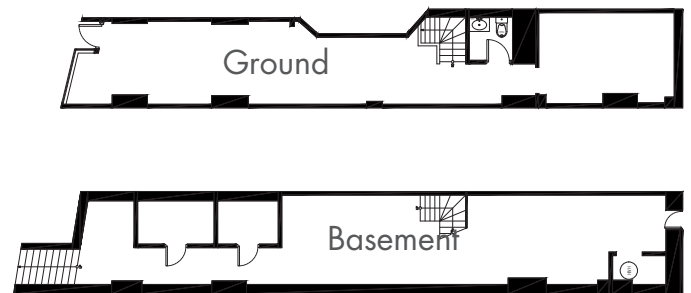
NEIGHBORS INCLUDE:

- I Sodi
- Rag & Bone
- Musee Lingerie
- Buvette
- Block Party (soon)
- McNulty's
- Lamove
- Sushi Nakawaza
- Little Owl
- Lucille Lortel Theater

EAST STORE



WEST STORE



PLEASE CONTACT:

Steve Rappaport

646.673.8750

steve@sinvin.com

Margie Sarway

646.673.8742

margie@sinvin.com