

BOUNTIFUL UTAH EYE CENTER BUILDING

214 West 1500 South, Bountiful, Utah 84010



FOR LEASE

\$18.00 PSF NNN

PROPERTY FEATURES

- 12,717 SF Available
- Entire 2nd Floor Available (Could be Demised)
- Newest Building in Davis County
- Ground-Level Secure Covered Parking
- Building Signage Available
- Improvement Package Available
- Public and Private Elevators
- Abundant Walkable Amenities
- Estimated NNN Fee: \$4.00

FOR MORE
INFORMATION
CONTACT

CHRIS FALK, CCIM, SIOR
801.416.1024
chris.falk@ngkf.com

BRAXTON WILLIE, CCIM
801.416.1050
braxton.willie@ngkf.com



1755 East 1450 South, Suite 100 | Clearfield, Utah 84015 | 801.927.2000 | www.ngacres.com

This document has been prepared by Newmark Knight Frank for advertising and general information purposes only. While the information contained herein has been obtained from what are believed to be reliable sources, the same has not been verified for accuracy or completeness. Newmark Knight Frank accepts no responsibility or liability for the information contained in this document. Any interested party should conduct an independent investigation to verify the information contained herein.

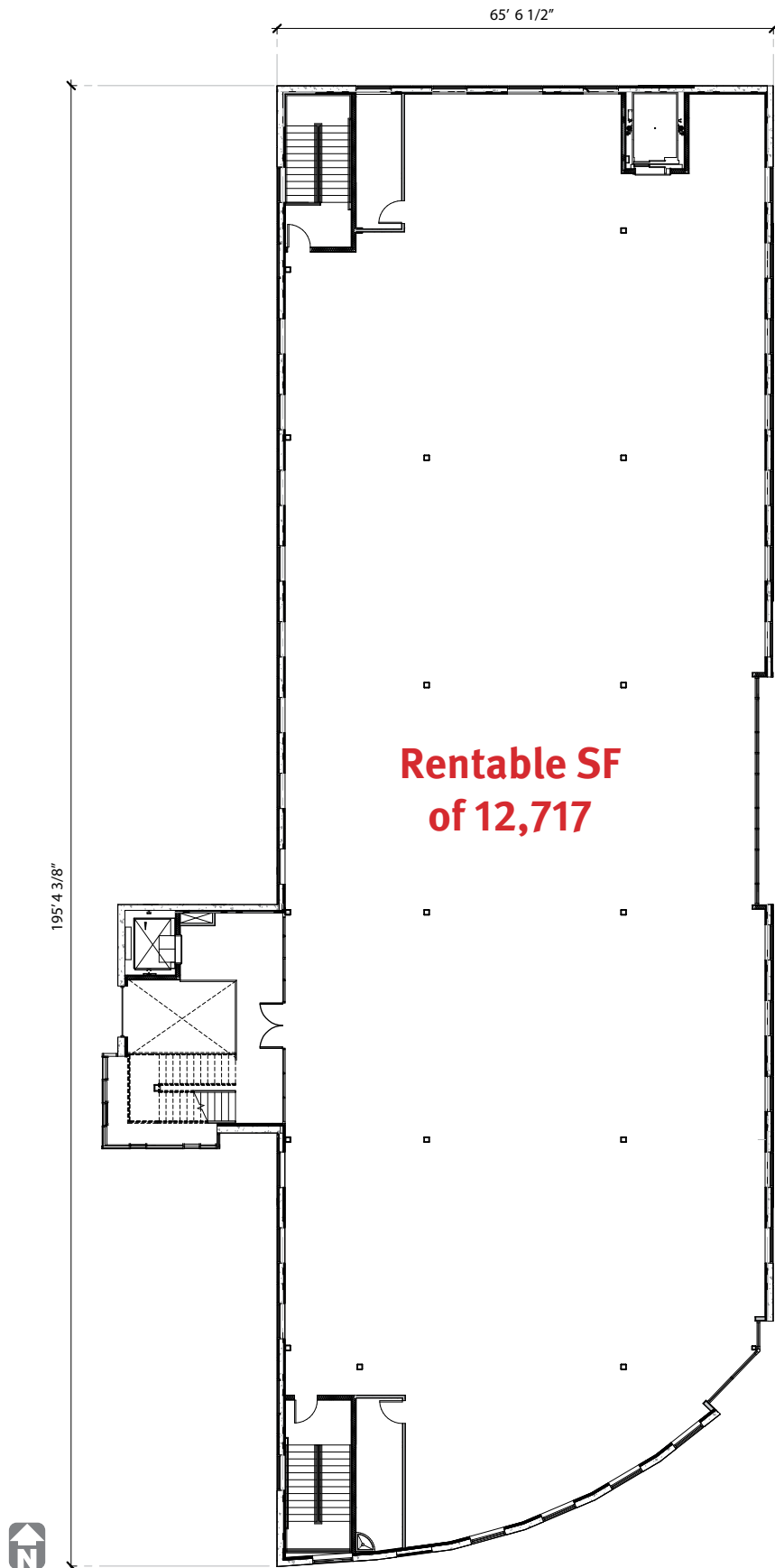
BOUNTIFUL UTAH EYE CENTER BUILDING

214 West 1500 South, Bountiful, Utah 84010



BOUNTIFUL UTAH EYE CENTER BUILDING

214 West 1500 South, Bountiful, Utah 84010



214 West 1500 South, Bountiful, Utah 84010



This document has been prepared by Newmark Knight Frank for advertising and general information purposes only. While the information contained herein has been obtained from what are believed to be reliable sources, the same has not been verified for accuracy or completeness. Newmark Knight Frank accepts no responsibility or liability for the information contained in this document. Any interested party should conduct an independent investigation to verify the information contained herein.