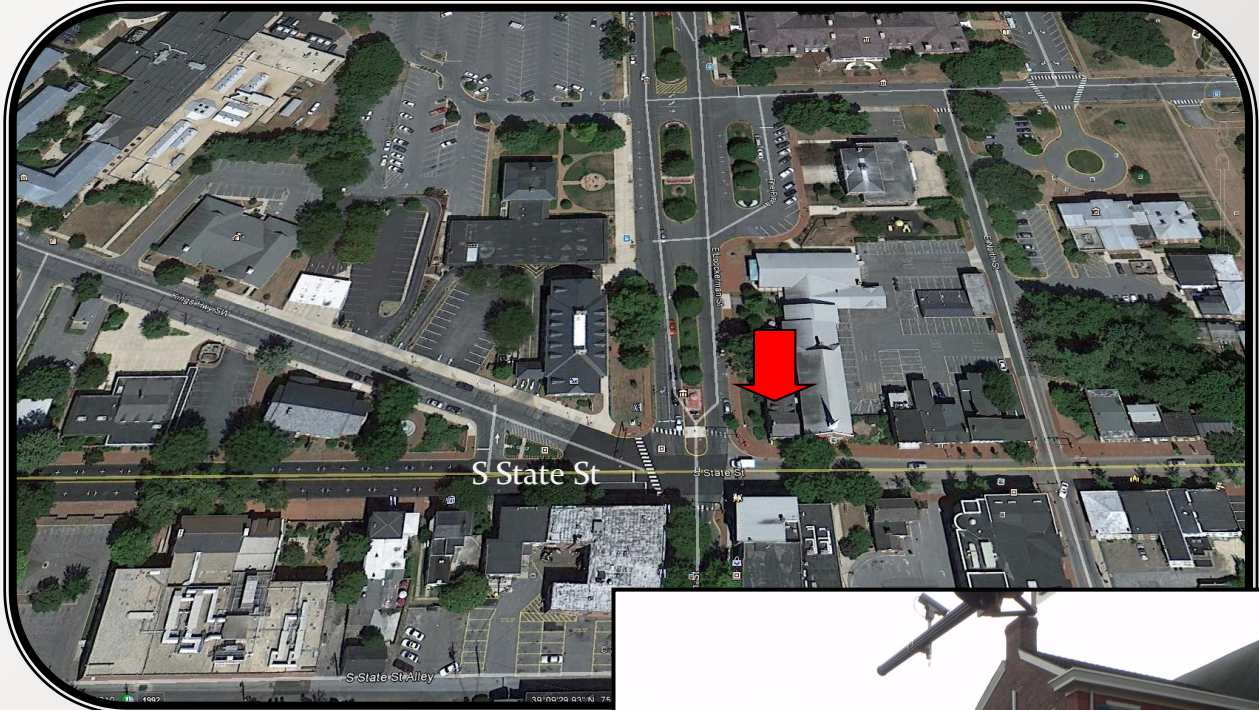




PROPERTY FOR SALE/LEASE

205 S State Street

Dover, DE



- Building size: 4,948+/- SF
- Sale Price: \$495,000
- Lease Price: \$16.00 psf NNN
- Zoning: RGO
- Tax Parcel Number: 2-05-07709-05-0100-00
- Kent County Taxes 2015 - \$2,872.57
- City of Dover Taxes 2015 - \$2,568.09
- Utilities: City of Dover

Demographics:	1 Mile	3 Miles	5 Miles
Population 2015	7,937	44,693	77,353
Medium Income 2015	41,082	47,618	51,385

Charlie Rodriguez

302-674-3400
ccrodi@aol.com

46 S State Street
Dover, DE 19901

302-674-3400 Office
302-674-8479 Fax

www.randrcommercialrealty.com



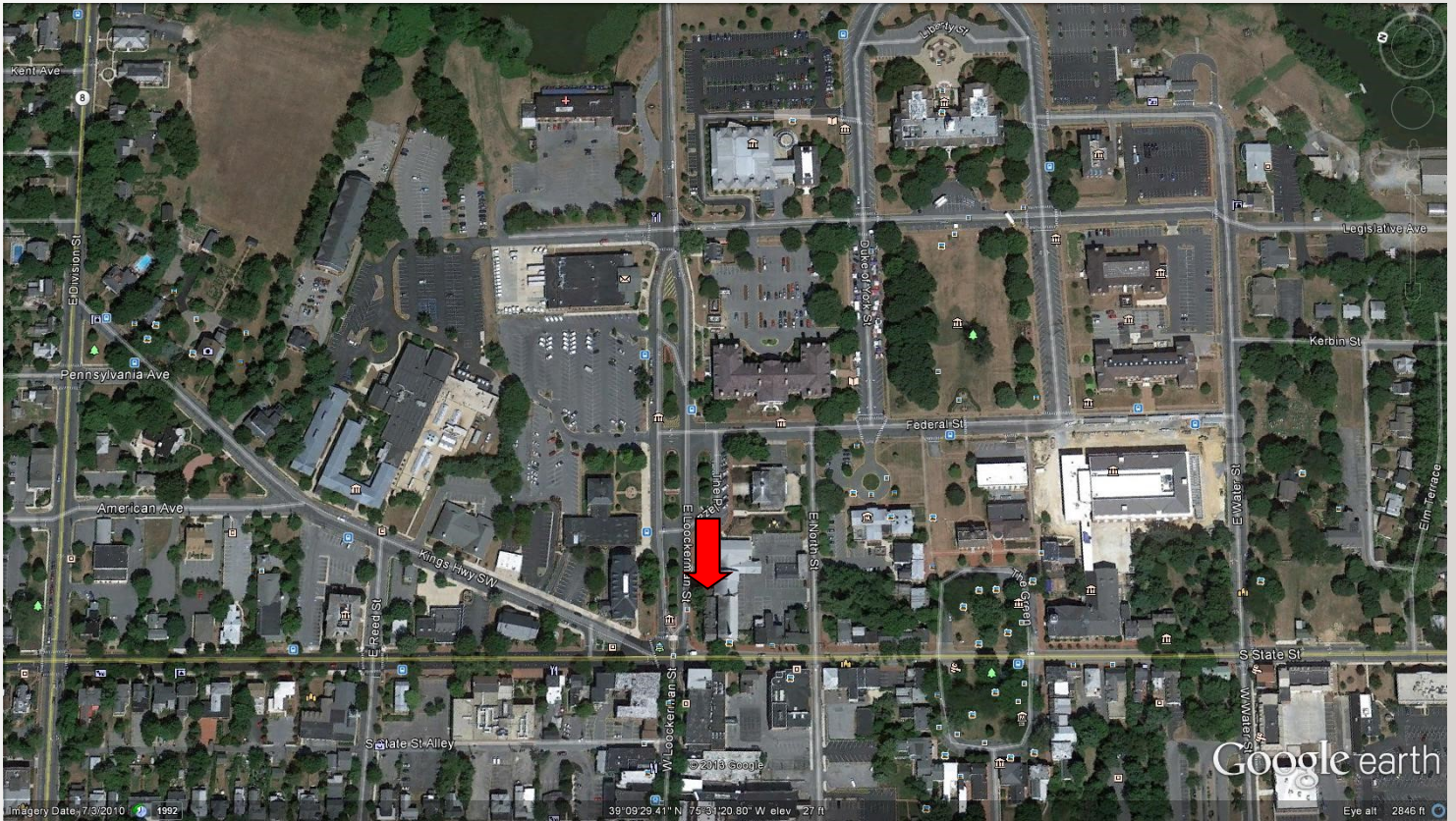
All information contained herein is believed to be accurate, however was obtained from third parties and R & R Commercial Realty, Inc. does not warrant as to the accuracy submitted subject to changes or modification without notice. Listing Broker represent s the sellers interest.



PROPERTY FOR SALE/LEASE

205 S State Street

Dover, DE



Conveniently located in Downtown Dover within walking distance to services downtown, banks, food & post office. Building features 2 floors of offices & conference rooms. The offices to the rear of the property have a separate entrance. Street parking.



Charlie Rodriguez

302-674-3400

ccrodi@aol.com

46 S State Street

Dover, DE 19901

302-674-3400 Office

302-674-8479 Fax

www.randrcommercialrealty.com