

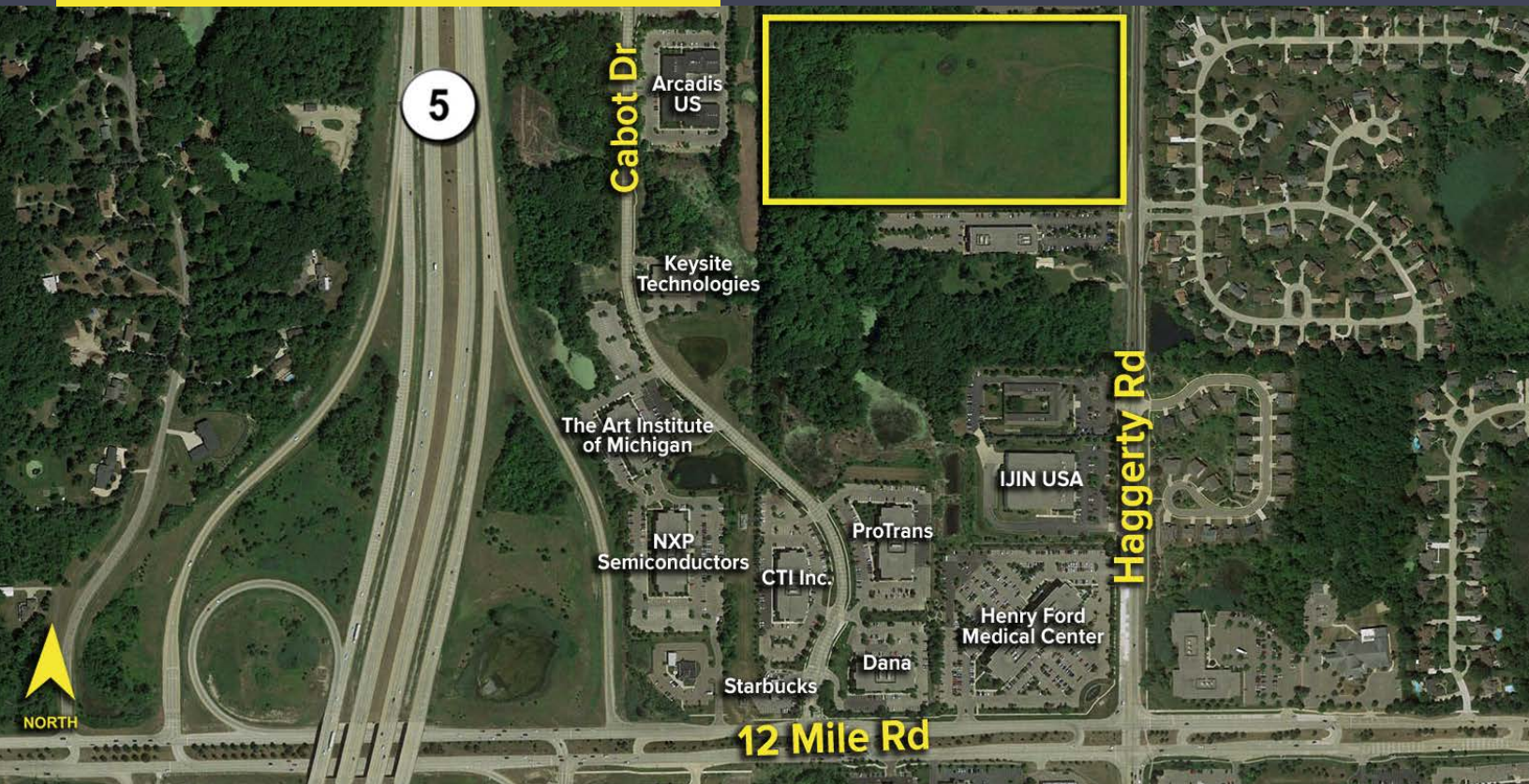
# HAGGERTY ROAD NOVI, MICHIGAN

HI-TECH/OFFICE FOR LEASE  
22 Acres / 50,000-250,000 Sq. Ft.



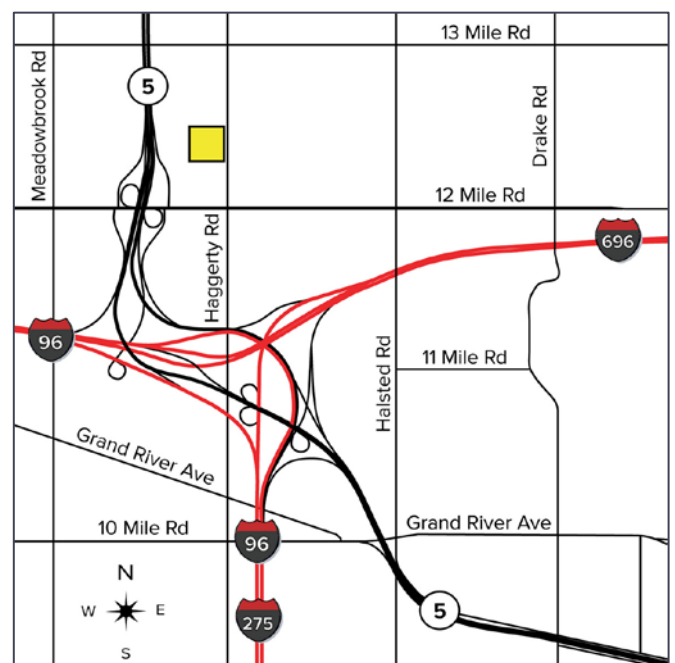
**SIGNATURE  
ASSOCIATES**  
KNOW SIGNATURE | KNOW RESULTS

**NOVA PLEX**



## PROPERTY FEATURES

- Build-to-Suit from 50,000 – 250,000 Sq. Ft.
- Join Magna, Hanon, Ryder, Dana and Henry Ford Medical Center
- Zoned for Office/Research
- Ideal for high-image corporate facility
- Unique large site along M-5
- Easy access to M-5, I-696, I-96 and I-275 expressways
- Close to many hotels, retail and restaurants



For more information, please contact:

**JIM MONTGOMERY**

(248) 359 0614

[jmontgomery@signatureassociates.com](mailto:jmontgomery@signatureassociates.com)

**JOHN BOYD**

(248) 948 0102

[jboyd@signatureassociates.com](mailto:jboyd@signatureassociates.com)

**SIGNATURE ASSOCIATES**

One Towne Square, Suite 1200

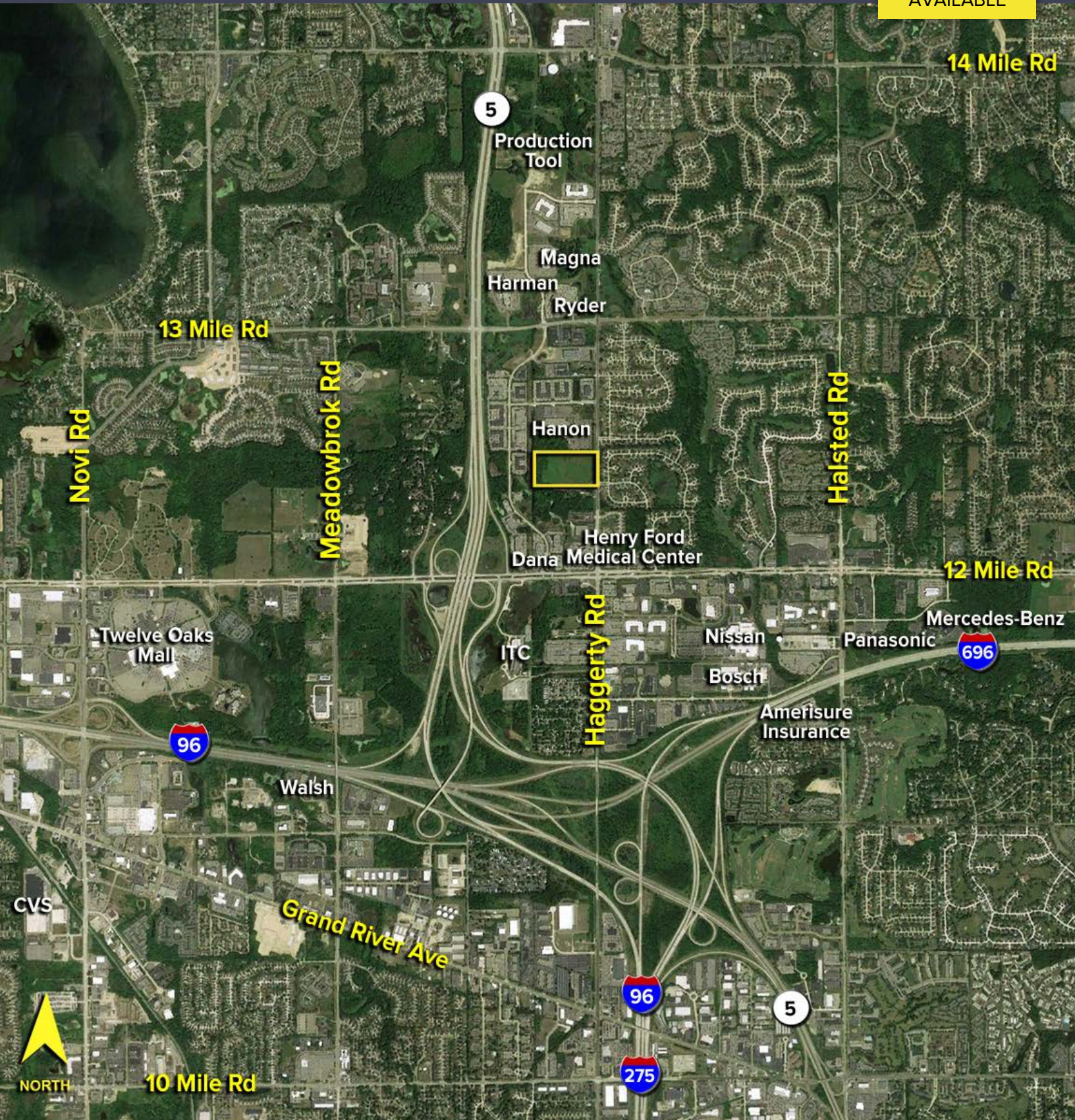
Southfield, MI 48076

[www.signatureassociates.com](http://www.signatureassociates.com)

# Haggerty Road – Novi, Michigan

## Hi-Tech/Office For Lease

22 Acres /  
50,000-  
250,000  
Square Feet  
AVAILABLE



For more information, please contact:

**JIM MONTGOMERY**

(248) 359 0614

[jmontgomery@signatureassociates.com](mailto:jmontgomery@signatureassociates.com)

**JOHN BOYD**

(248) 948 0102

[jboyd@signatureassociates.com](mailto:jboyd@signatureassociates.com)

**SIGNATURE ASSOCIATES**

One Towne Square, Suite 1200

Southfield, MI 48076

[www.signatureassociates.com](http://www.signatureassociates.com)

Information is subject to verification and no liability for errors or omissions is assumed. Price is subject to change and listing withdrawal.