

Office Space

- upscale turnkey condition

FOR LEASE PROPERTY SPECIFICATIONS

Description:	Class A Office Space
Year Built:	2016
Space Available:	+/- 1,500 SF
Sprinklered:	Yes
Sewer/Water:	City
Parking:	Shared
Possession:	30 Days
Lease Term:	3 year minimum
Lease Price:	\$15.00 PSF NNN



PROPERTY OVERVIEW

+/- 1,500 SF

- Class A turnkey office space just off Randall Rd.
- Excess office space is being carved out of existing dentist office space
- Existing upscale improvements include private offices, conference rooms, kitchenette, breakroom, private bathroom
- Move-in condition
- Able to provide private entrance
- Building is handicap accessible
- Well positioned, with very easy access and plenty of parking

Presented By:

Linda Kost
Senior Broker/Partner
847.910.8820
LKost@realtymetrix.com

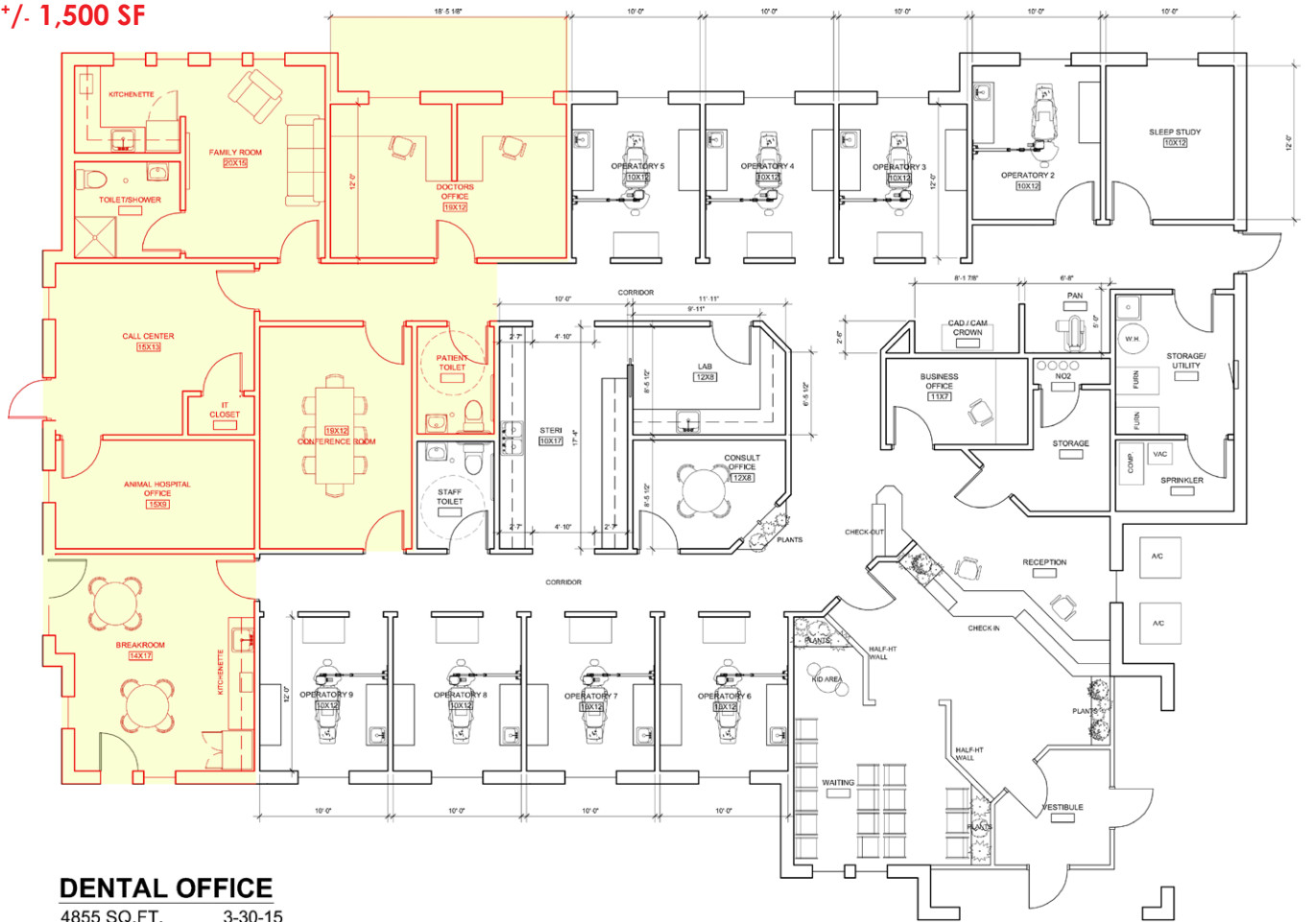
Dave Schmidt
Managing Broker/Partner
847.404.3851
DSchmidt@realtymetrix.com

Realty Metrix Commercial
2390 Esplanade Drive
Suite 201
Algonquin IL 60102



AVAILABLE SPACE

+/- 1,500 SF



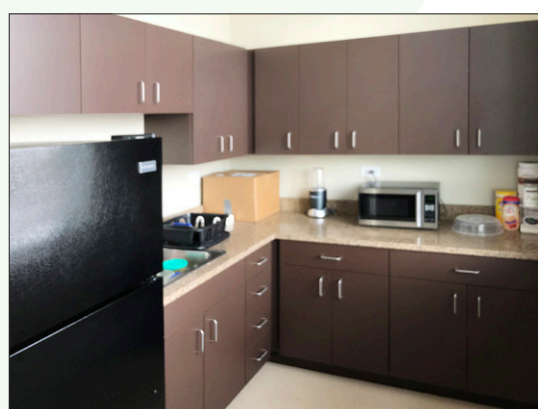
Presented By:

Linda Kost
Senior Broker/Partner
847.910.8820
LKost@realtymetrix.com

Dave Schmidt
Managing Broker/Partner
847.404.3851
DSchmidt@realtymetrix.com

Realty Metrix Commercial
2390 Esplanade Drive
Suite 201
Algonquin IL 60102





Presented By:

Linda Kost
Senior Broker/Partner
847.910.8820
LKost@realtymetrix.com

Dave Schmidt
Managing Broker/Partner
847.404.3851
DSchmidt@realtymetrix.com

Realty Metrix Commercial
2390 Esplanade Drive
Suite 201
Algonquin IL 60102

