



NEWMARK

The Wells Building

324 E WISCONSIN AVENUE
MILWAUKEE, WISCONSIN



Building Size

±165,000 RSF

Available Space

Suite 120: ±2,389 SF
Suite 200: ±4,845 SF
Suite 1320: ±3,328 SF

Lease Rate

\$21.00 PSF Modified Gross

Office Space for Lease in Technology Hub

Retail Space for Lease on E Wisconsin Ave

Property Highlights

- With 7 fiber entries, 30 on-site carriers and an Internet exchange, the Wells Building is positioned to keep you connected at all times with multiple options.
- Your office needs can evolve at the Wells Building with turn-key suites, available shell space and integrating your requirements in the phased infrastructure upgrades currently underway.
- Amenities include a state of the art conference room available for tenant use, concierge services, bike storage, and free WiFi throughout the building
- Retail opportunity on the ground floor allows for access directly from Wisconsin Avenue or the lobby interior



For information, please contact:

Tim Janusz

Managing Director

t 414-908-9155

tim.janusz@nrmk.com

Rachel Schmidt, CCIM

Managing Director

t 414-395-4691

rachel.schmidt@nrmk.com

757 N Broadway

Suite 700

Milwaukee, WI 53202

nrmk.com



NEWMARK

The information contained herein has been obtained from sources deemed reliable but has not been verified and no guarantee, warranty or representation, either express or implied, is made with respect to such information. Terms of sale or lease and availability are subject to change or withdrawal without notice.

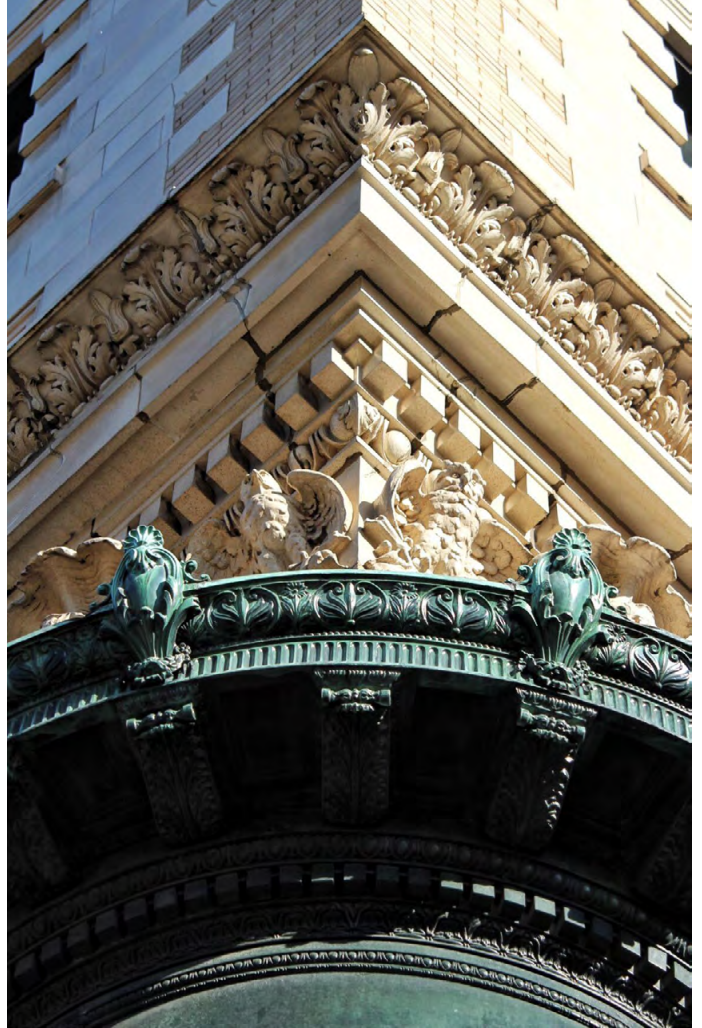
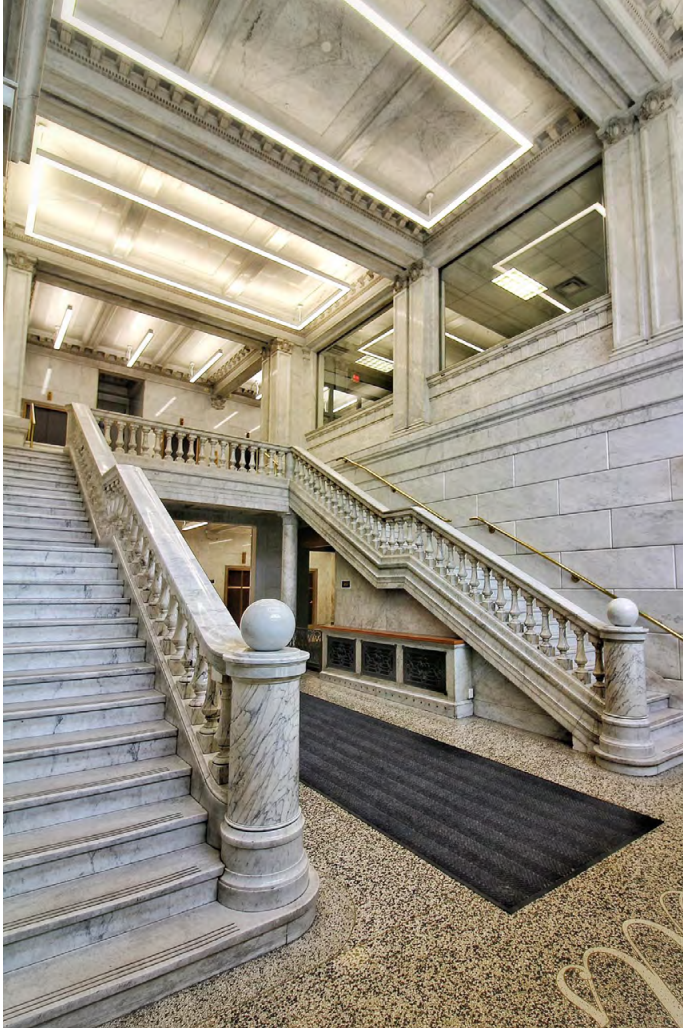


History. Connected.

Your access to the world begins at Wells. Strategically located and deeply networked, the Wells Building is a technology hub infused with history and positioned for the future of connectivity. With tech and people space of all sizes and needs, the Wells Building is the global station for today's technology driven businesses.

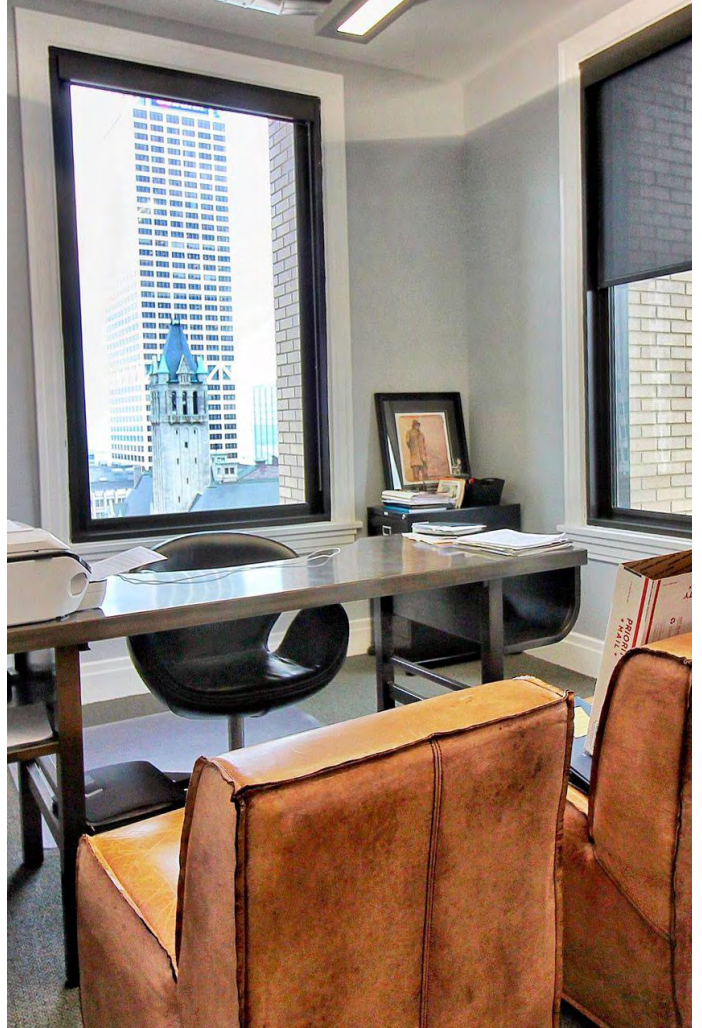
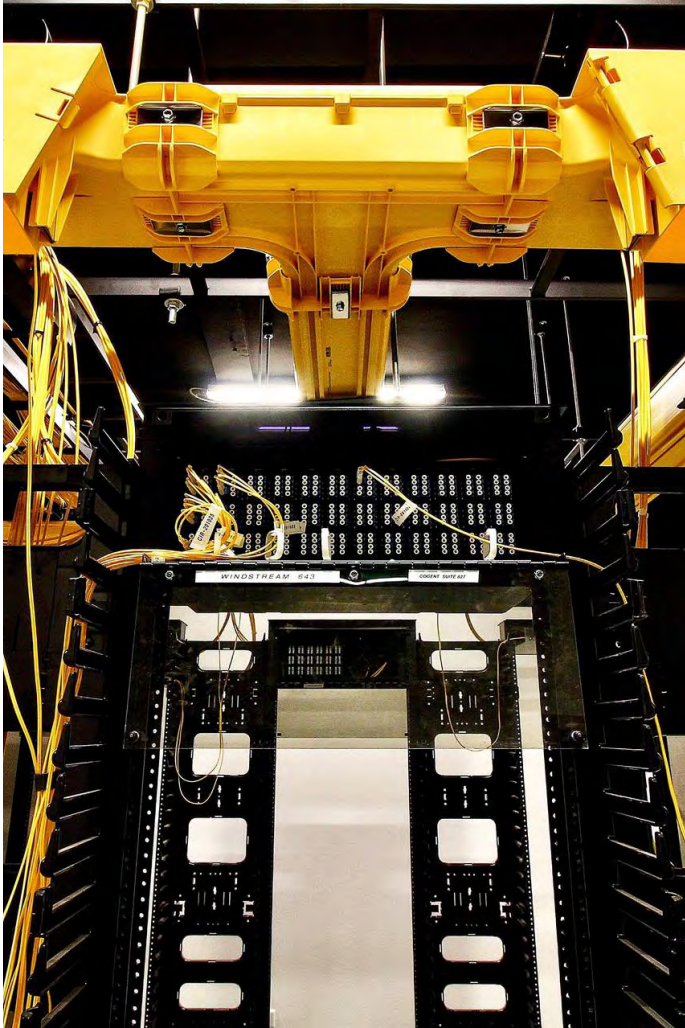
As Milwaukee's first skyscraper, the Wells Building has been home to business for over one hundred years. Now with amenities such as a state of the art conference room, concierge services, bike storage, and free wifi throughout the building, the Wells Building has been updated to provide your business an exemplary address for success.

WELLS BUILDING | MILWAUKEE, WISCONSIN



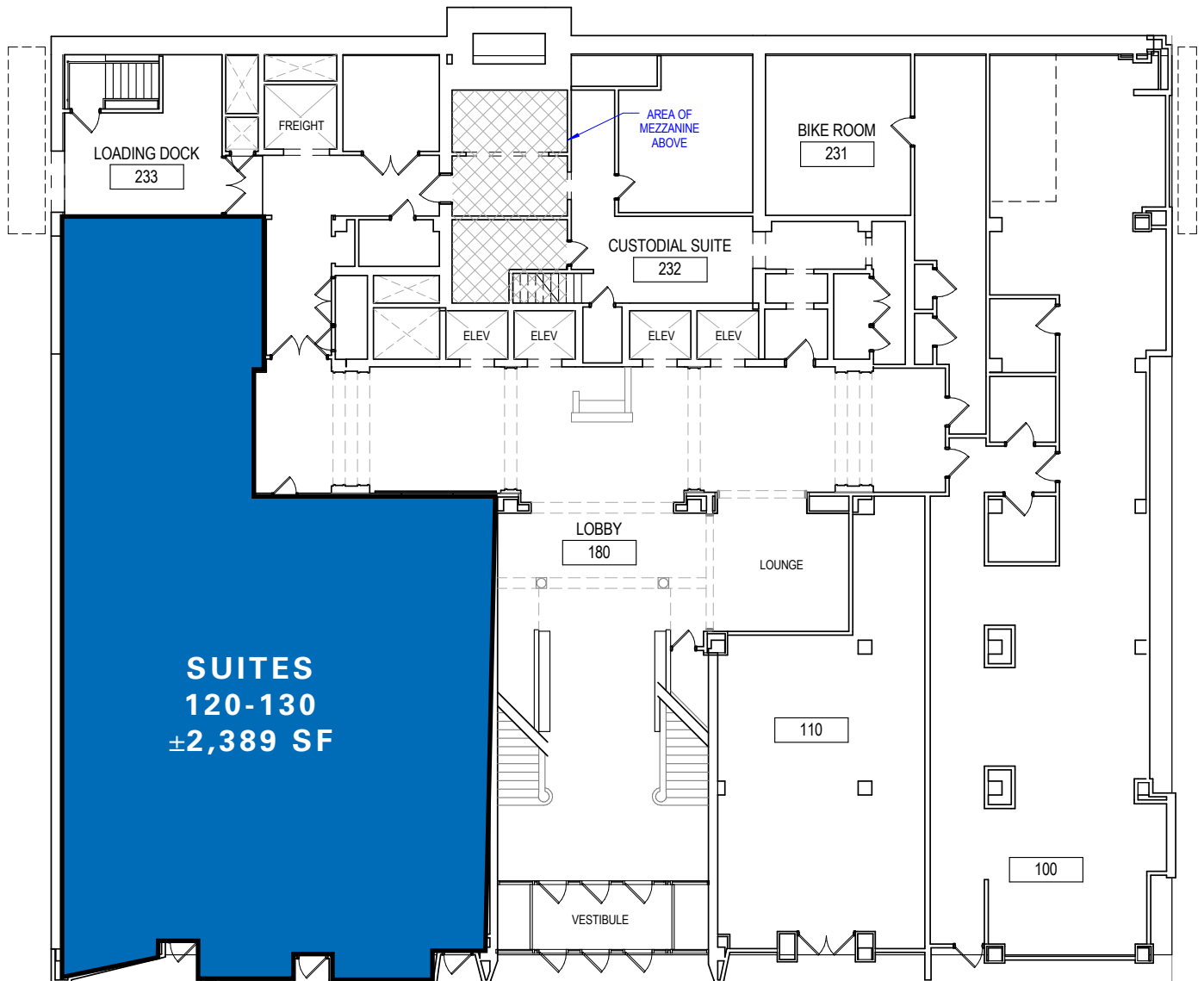
NEWMARK

WELLS BUILDING | MILWAUKEE, WISCONSIN



NEWMARK

First Floor



CONTACT

Tim Janusz

Managing Director

t 414-908-9155

tim.janusz@nrmk.com

nrmk.com

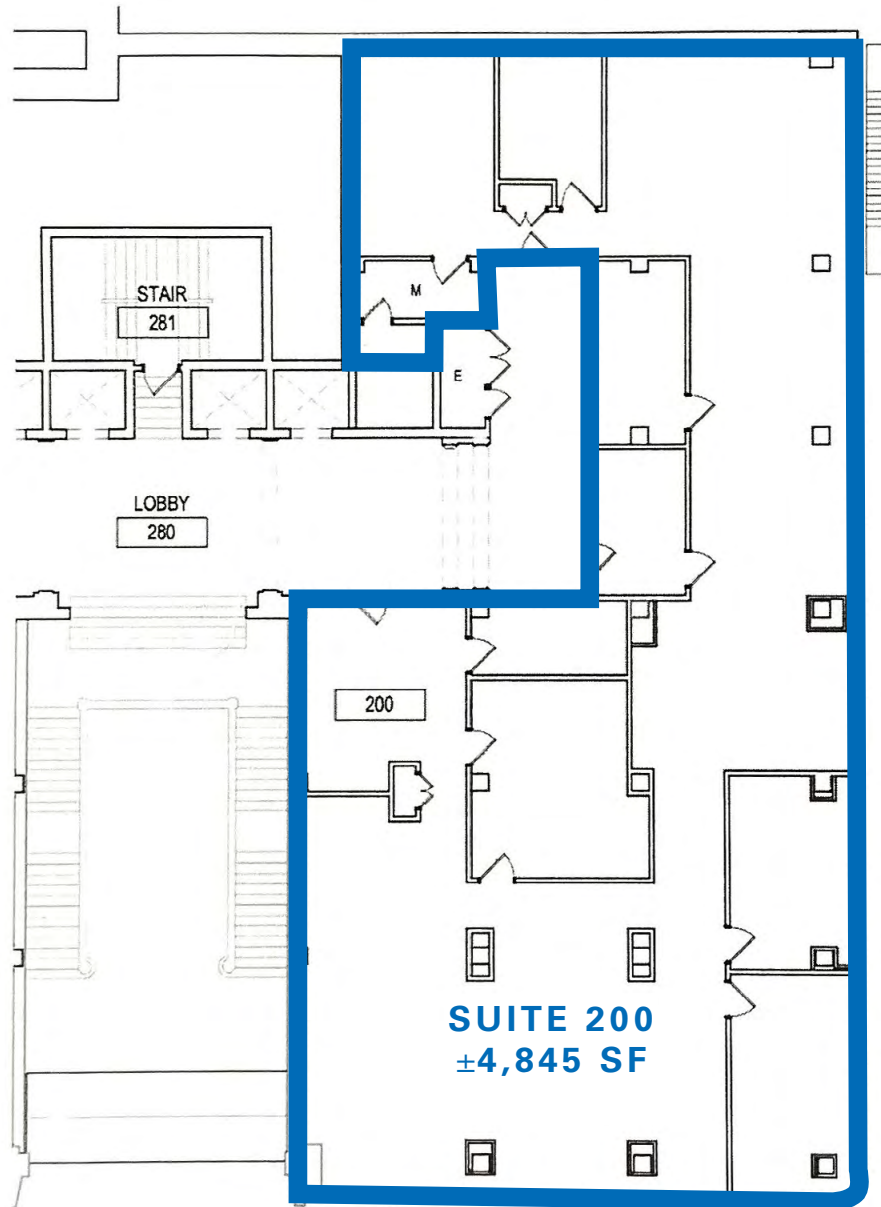
Rachel Schmidt, CCIM

Managing Director

t 414-395-4691

rachel.schmidt@nrmk.com

Second Floor



CONTACT

Tim Janusz

Managing Director

t 414-908-9155

tim.janusz@nmrk.com

nmrk.com

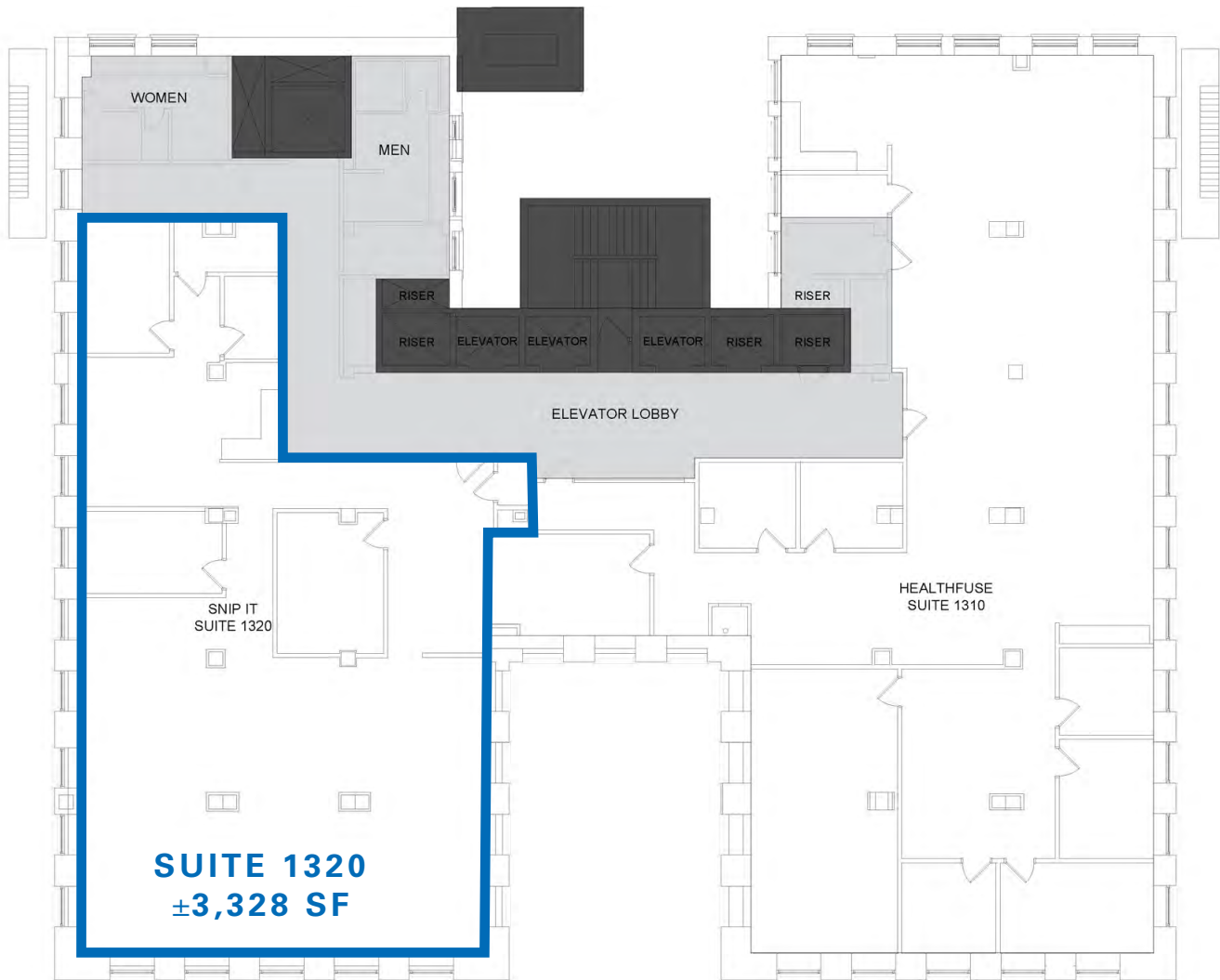
Rachel Schmidt, CCIM

Managing Director

t 414-395-4691

rachel.schmidt@nmrk.com

13th Floor



CONTACT

Tim Janusz

Managing Director

t 414-908-9155

tim.janusz@nmrk.com

nmrk.com

Rachel Schmidt, CCIM

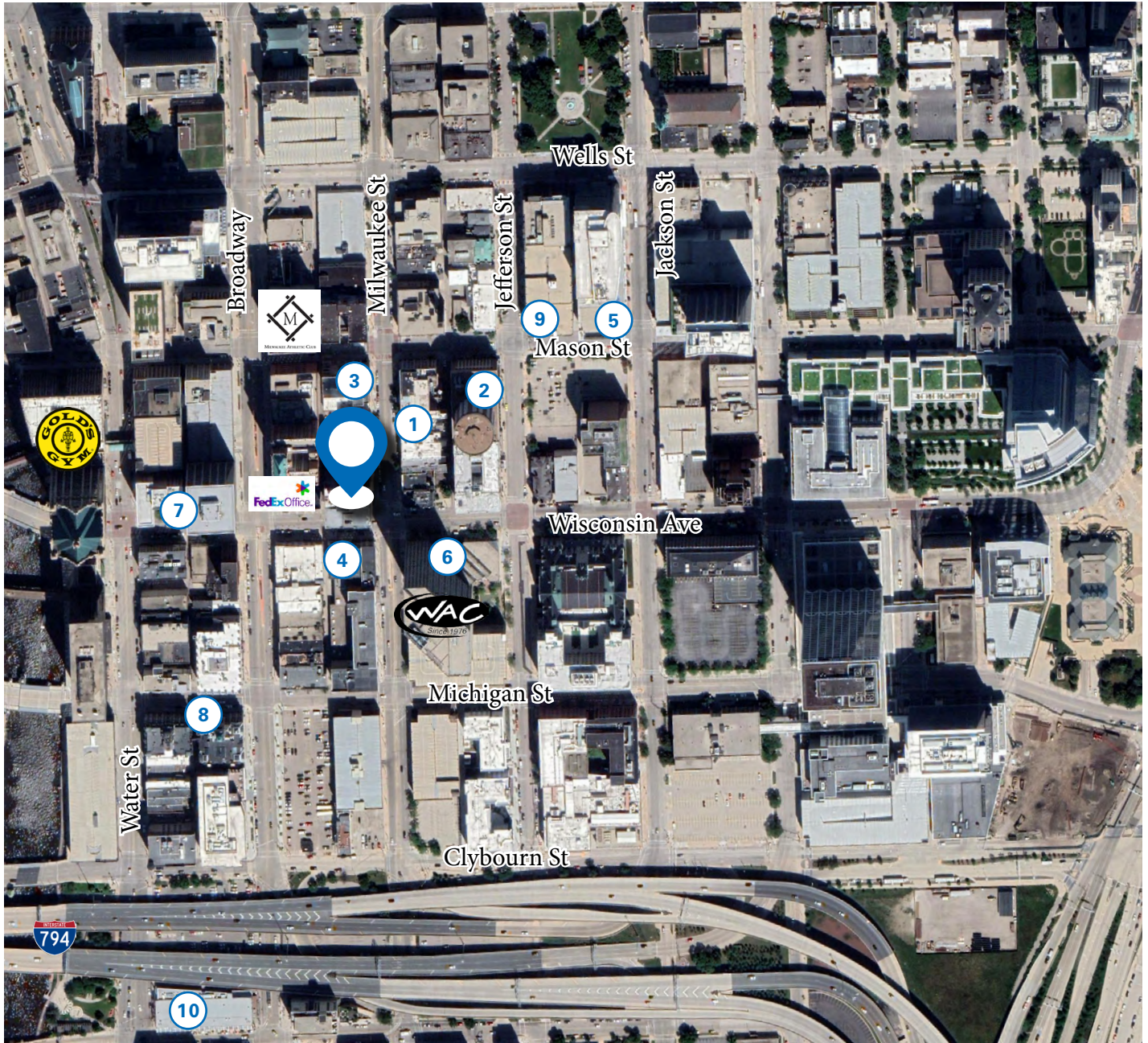
Managing Director

t 414-395-4691

rachel.schmidt@nmrk.com

WELLS BUILDING | MILWAUKEE, WISCONSIN

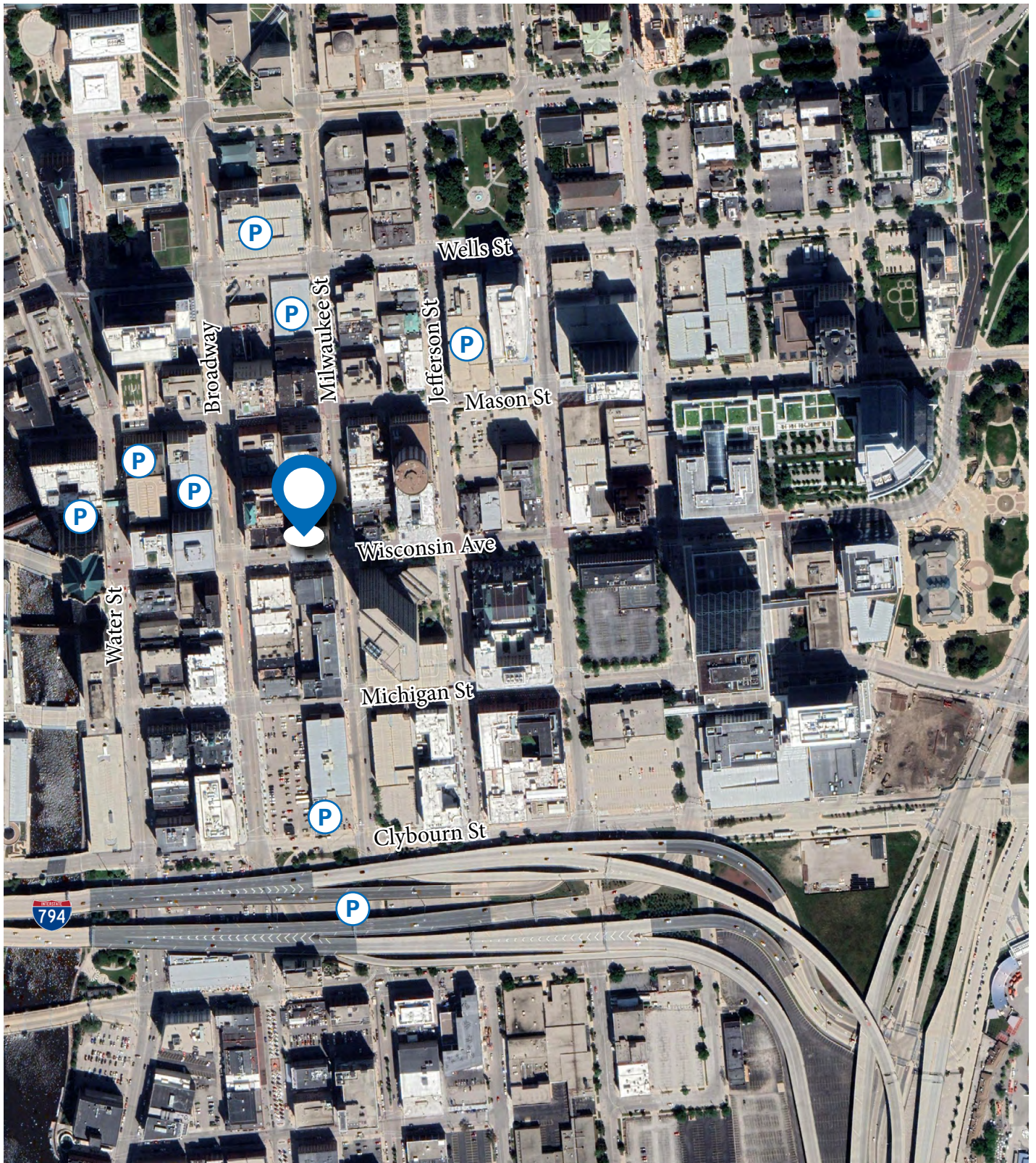
Select Restaurants Close to the Wells Building and Other Amenities



NEWMARK

WELLS BUILDING | MILWAUKEE, WISCONSIN

Select Parking Options Close to the Wells Building



STATE OF WISCONSIN BROKER DISCLOSURE TO NON-RESIDENTIAL CUSTOMERS

Wisconsin law requires all real estate licensees to give the following information about brokerage services to prospective customers.

Prior to negotiating on your behalf the brokerage firm, or an agent associated with the firm, must provide you the following disclosure statement.

DISCLOSURE TO CUSTOMERS

You are a customer of the brokerage firm (hereinafter Firm). The Firm is either an agent of another party in the transaction or a subagent of another firm that is the agent of another party in the transaction. A broker or a salesperson acting on behalf of the Firm may provide brokerage services to you. Whenever the Firm is providing brokerage services to you, the Firm and its brokers and salespersons (hereinafter Agents) owe you, the customer, the following duties:

- The duty to provide brokerage services to you fairly and honestly.
- The duty to exercise reasonable skill and care in providing brokerage services to you.
- The duty to provide you with accurate information about market conditions within a reasonable time if you request it, unless disclosure of the information is prohibited by law.
- The duty to disclose to you in writing certain Material Adverse Facts about a property, unless disclosure of the information is prohibited by law (see “Definition of Material Adverse Facts” below).
- The duty to protect your confidentiality. Unless the law requires it, the Firm and its Agents will not disclose your confidential information or the confidential information of other parties (see “Confidentiality Notice To Customers” below).
- The duty to safeguard trust funds and other property held by the Firm or its Agents.
- The duty, when negotiating, to present contract proposals in an objective and unbiased manner and disclose the advantages and disadvantages of the proposals.

Please review this information carefully. An agent of the Firm can answer your questions about brokerage services, but if you need legal advice, tax advice, or a professional property inspection, contact an attorney, tax advisor, or property inspector.

This disclosure is required by section 452.135 of the Wisconsin statutes and is for information only. It is a plain-language summary of the duties owed to a customer under section 452.133(1) of the Wisconsin statutes.

CONFIDENTIALITY NOTICE TO CUSTOMERS

The Firm and its Agents will keep confidential any information given to the Firm or its Agents in confidence, or any information obtained by the Firm or its Agents that a reasonable person would want to be kept confidential, unless the information must be disclosed by law or you authorize the Firm to disclose particular information. The Firm and its Agents shall continue to keep the information confidential after the Firm is no longer providing brokerage services to you.

The following information is required to be disclosed by law:

1. Material Adverse Facts, as defined in Wis. Stat. §452.01 (5g) (see “definition of material adverse facts” below).
2. Any facts known by the Firm or its Agents that contradict any information included in a written inspection report on the property or real estate that is the subject of the transaction.

To ensure that the Firm and its Agents are aware of what specific information you consider confidential, you may list that information below or provide that information to the Firm or its Agents by other means. At a later time, you may also provide the Firm or its Agents with other information you consider to be confidential.

CONFIDENTIAL INFORMATION: _____

NON-CONFIDENTIAL INFORMATION (The following information may be disclosed by the Firm and its Agents): _____

(INSERT INFORMATION YOU AUTHORIZE TO BE DISCLOSED SUCH AS FINANCIAL QUALIFICATION INFORMATION)

DEFINITION OF MATERIAL ADVERSE FACTS

A “Material Adverse Fact” is defined in Wis. Stat. §452.01 (5g) as an Adverse Fact that a party indicates is of such significance, or that is generally recognized by a competent licensee as being of such significance to a reasonable party, that it affects or would affect the party’s decision to enter into a contract or agreement concerning a transaction or affects or would affect the party’s decision about the terms of such a contract or agreement.

An “Adverse Fact” is defined in Wis. Stat. §452.01 (1e) as a condition or occurrence that a competent licensee generally recognizes will significantly and adversely affect the value of the property, significantly reduce the structural integrity of improvements to real estate, or present a significant health risk to occupants of the property; or information that indicates that a party to a transaction is not able to or does not intend to meet his or her obligations under a contract or agreement made concerning the transaction.

SEX OFFENDER REGISTRY

Notice: You may obtain information about the sex offender registry and persons registered with the registry by contacting the Wisconsin Department of Corrections on the Internet at <http://www.doc.wi.gov/> or by phone at 608-240-5830.

No representation is made as to the legal validity of any provision or the adequacy of any provision in any specific transaction.