

FIND YOUR CONNECTION HERE

910 | SYLVAN
920 | CORPORATE
930 | CENTER
940 | SYLVAN AVENUE
ENGLEWOOD CLIFFS



1,580 SF - 85,903 SF

AVAILABLE FOR LEASE WITH HEADQUARTERS OPPORTUNITY



910 | SYLVAN
920 | CORPORATE
930 | CENTER
940 | SYLVAN AVENUE
ENGLEWOOD CLIFFS

MANHATTAN

GEORGE WASHINGTON BRIDGE

CAMPUS OVERVIEW

- 4 buildings, totaling 270,000 SF with interconnecting sky bridge
- Availabilities ranging from 4,849 – 65,790 SF
- HQ opportunity
- Nicest Class A multi-tenant building located in the Englewood submarket (Trillion Dollar Mile)
- Covered parking garage
- Campus tenants include:
 - LG Electronics
 - Whole Foods
 - Onex Credit Partners, LLC
 - Barnet Products

ENTRANCE

SKY BRIDGE

CAFE

910 4,849 SF AVAILABLE

930 FULLY LEASED

920 18,572 SF AVAILABLE

940 61,525 SF AVAILABLE



CORPORATE NEIGHBORS

CNBC

Cognizant Technology Solutions Corporation

DeCotiis, FitzPatrick & Cole, LLP

IAC Applications

Kumon North America Inc

LG Corp. USA

LG Electronics

Michelan Suites

New York State Division of Human Rights

Northern Manhattan Imprvmt Crp

Samsung Electronics America, Inc.

Samsung SDS America, Inc.

Tranzact

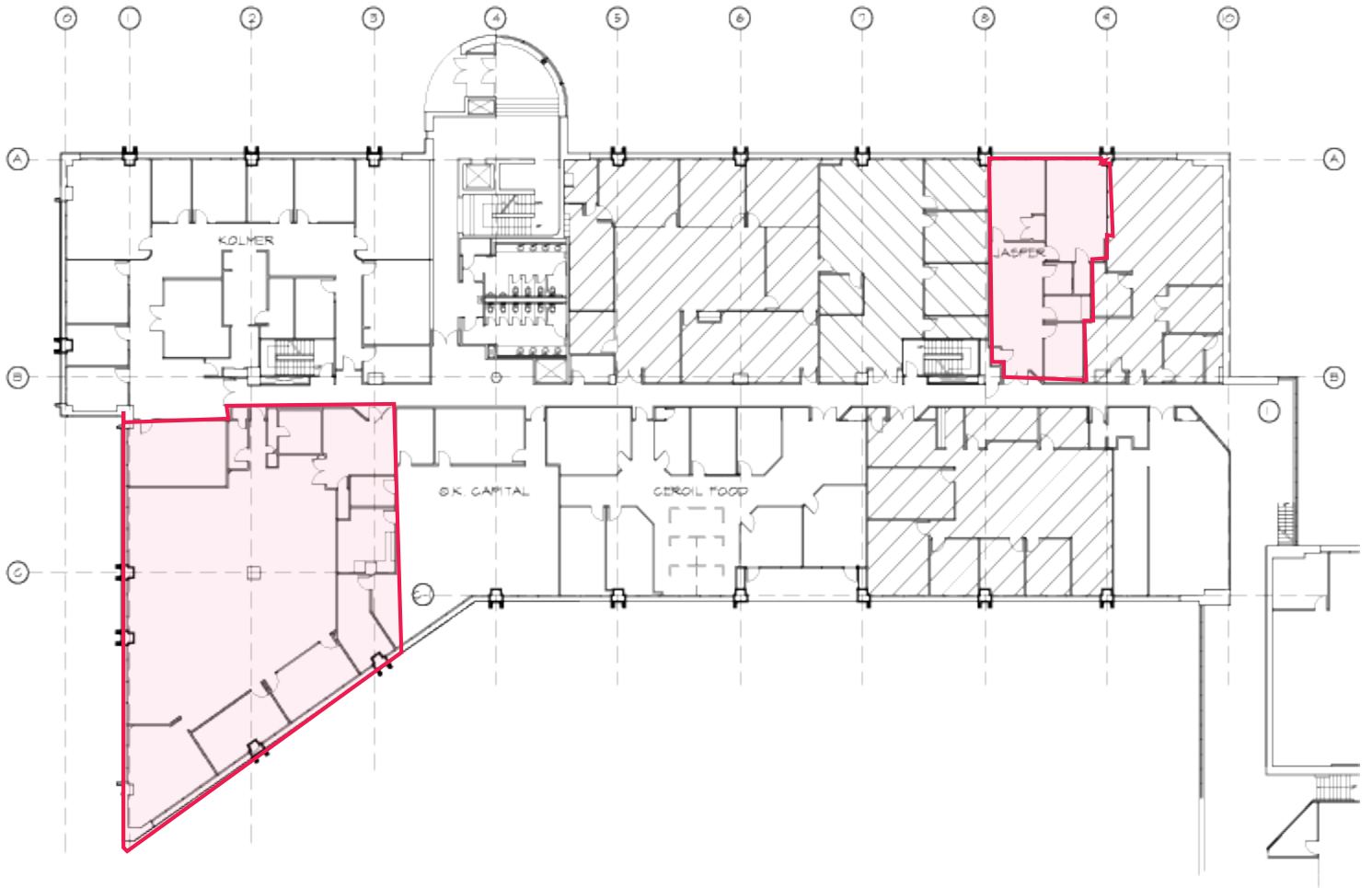
Univision Communications Inc.

Whole Foods Market Regl Office

Yeshiva He'Atid

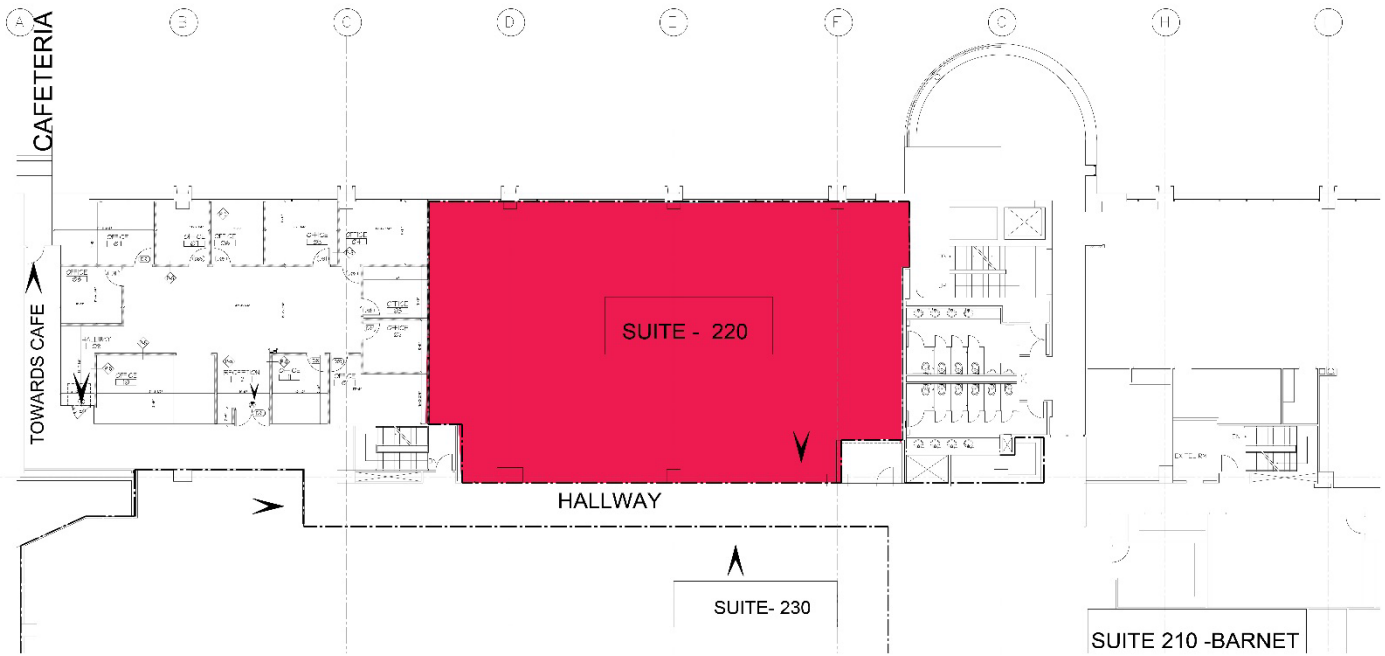
BUILDING 910

Floor 1 – 1,580 SF & 3,69 SF



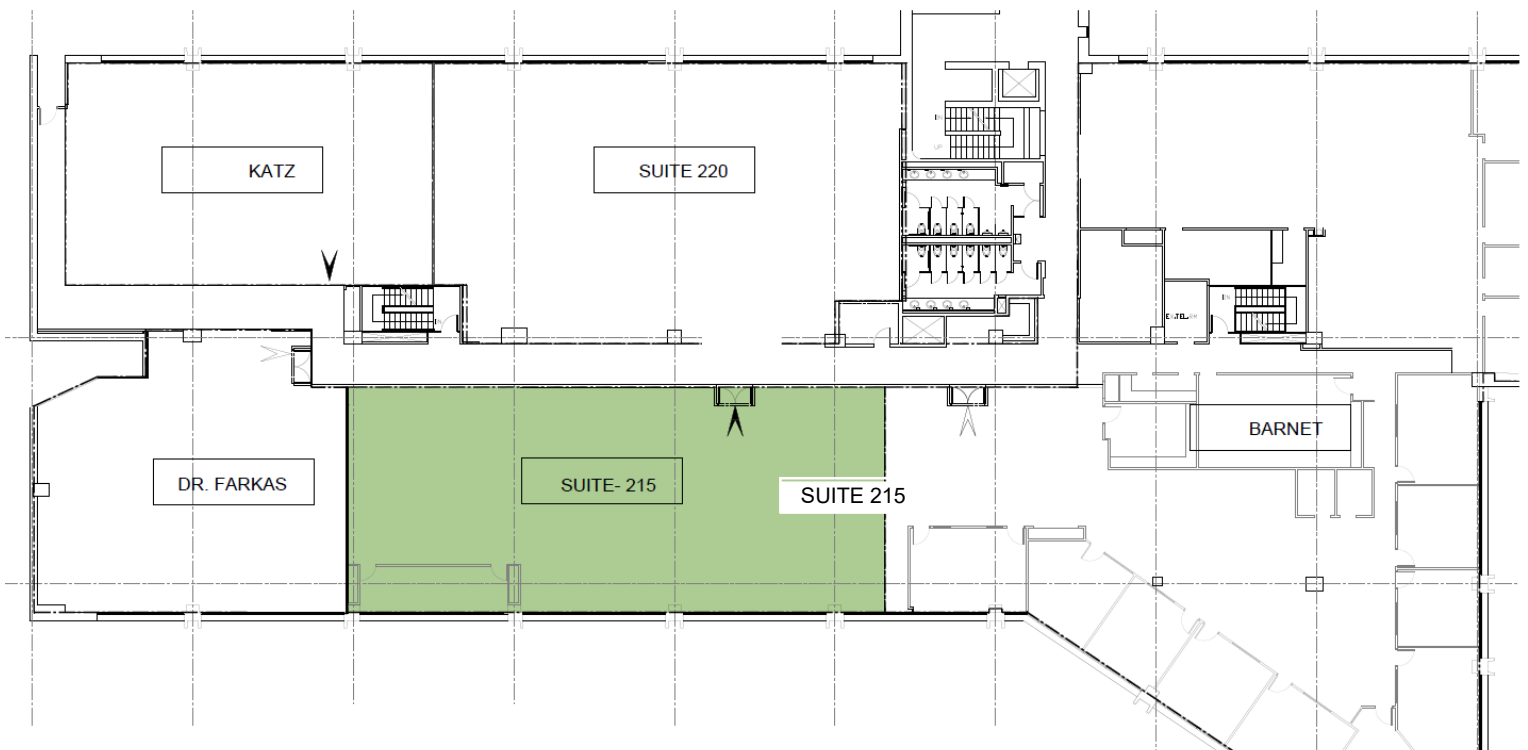
BUILDING 920

Floor 2 - Suite 220 - 5,897 SF



BUILDING 920

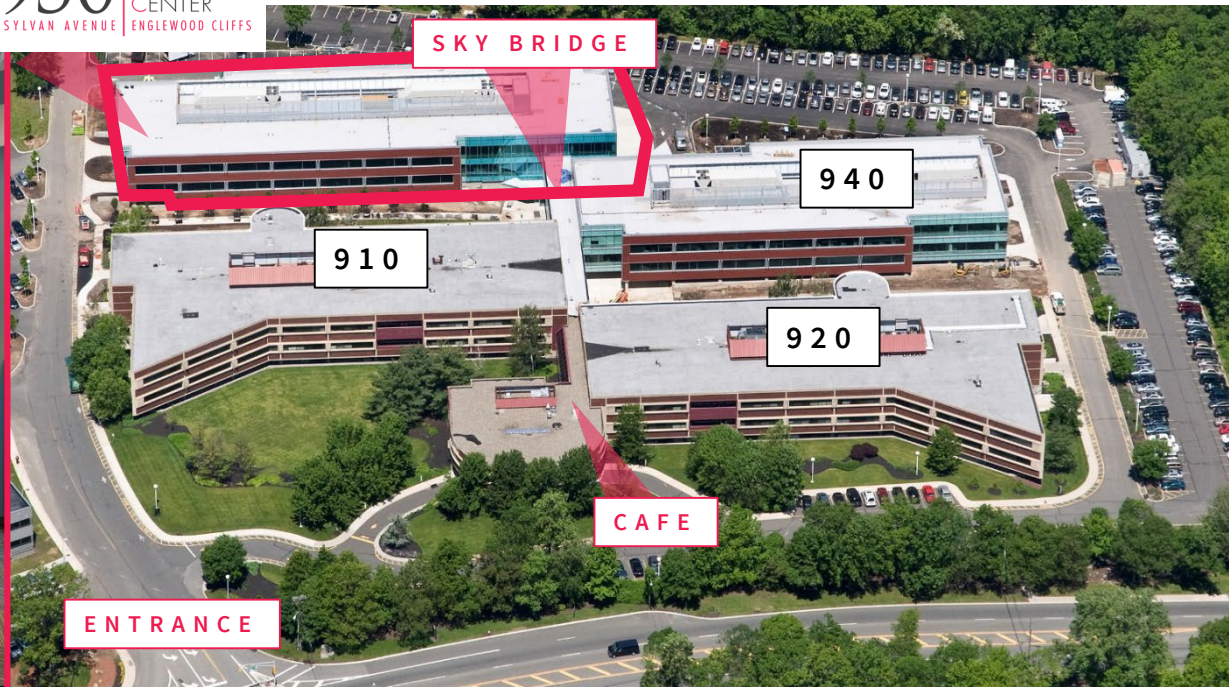
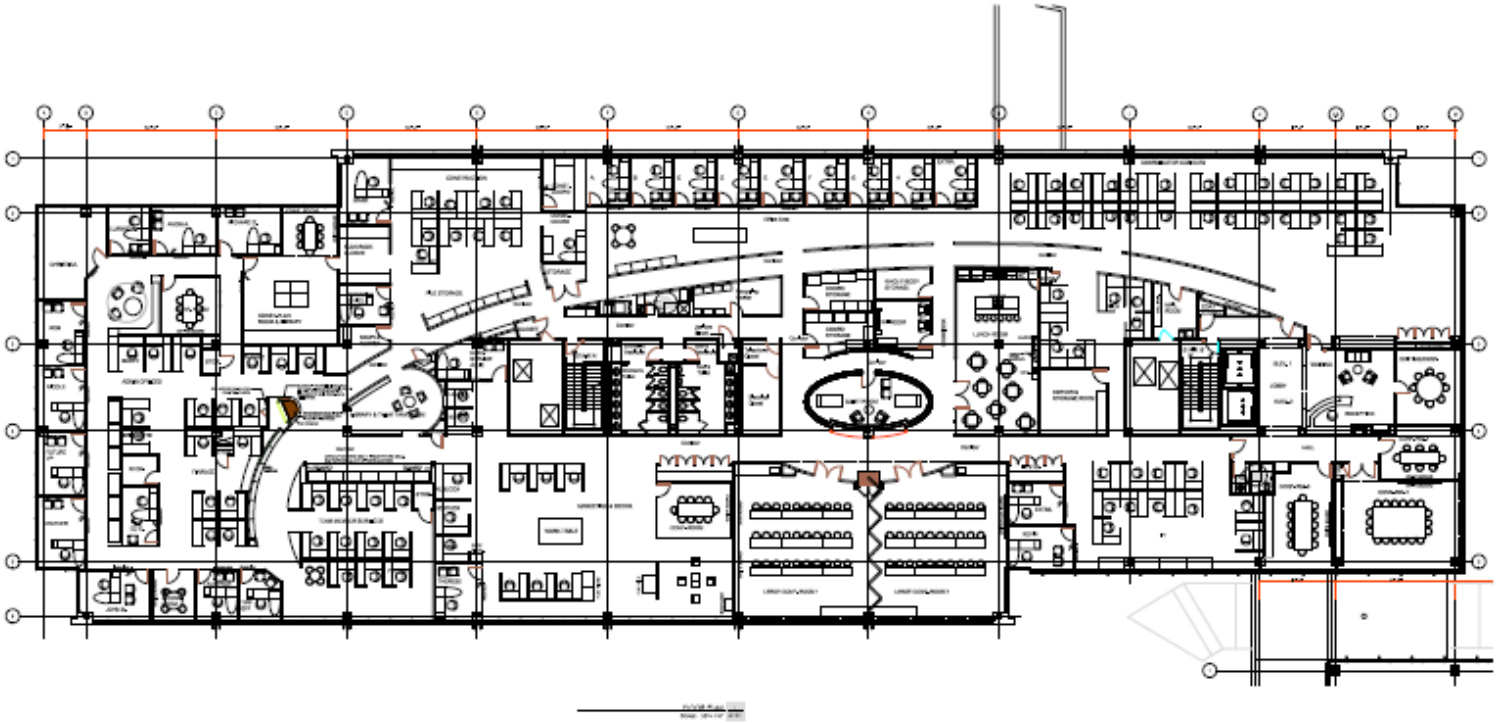
Floor 2 - Suite 215 - 6,095 SF



BUILDING 930

Full building available

Floor 2 – 38,200 SF

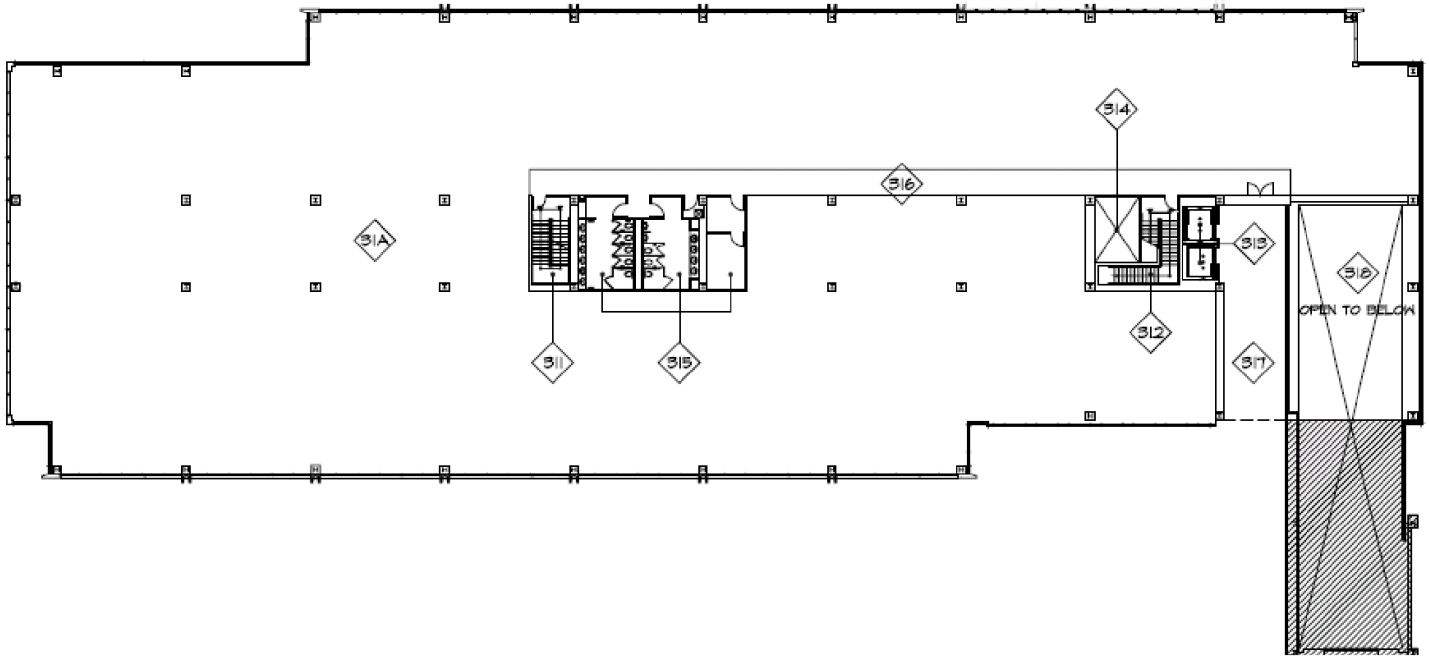


BUILDING 940

Full building available

Floor 2 – 30,673 SF

TYPICAL FLOOR PLAN



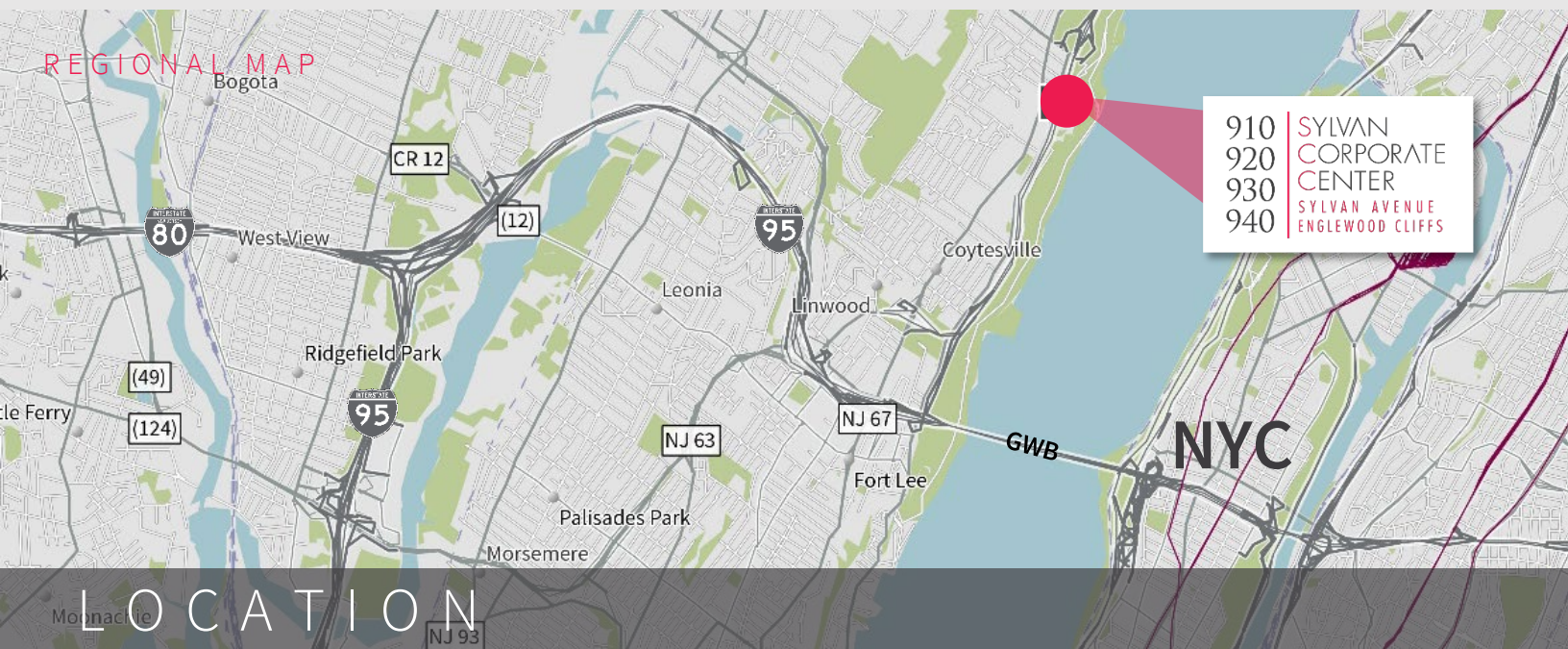


BUILDING 940



940 SYLVAN CORPORATE CENTER
SYLVAN AVENUE ENGLEWOOD CLIFFS





LOCATION

940 Sylvan Avenue, Sylvan Corporate Center, is located in Englewood Cliffs, New Jersey. Only three miles north of the George Washington Bridge, travel time to midtown Manhattan is approximately 20 minutes. The buildings are also in close proximity to I-80, I-95 (New Jersey Turnpike), Routes 4, 46 1 & 9, the Palisades and Garden State Parkways and The Tappan Zee Bridge.



For more information, please contact:

Frank Recine	Nicolas DeCotiis
+1 973 829 4738	+1 973 829 4674
frank.recine@am.jll.com	nicolas.decotiis@am.jll.com

Owners:
ANDALEX CAPITAL