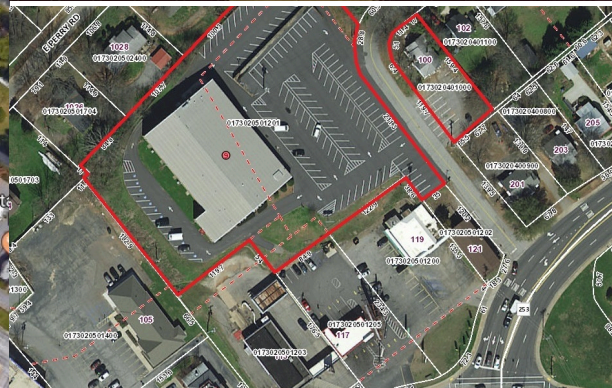


Religious and/or Educational Building
9 Beth Dr | Greenville, SC 29609

For Sale
\$2,500,000



Amazing Commercial property currently being used a church. Perfect for school, retail or other office modifications

- 2.49 ±Acres
- Across from the Cherrydale Shopping Center
- 80+ parking spaces
- Parsonage/youth center is on
- 0.22±AC approximately 1,330SF house
- extra parking spaces.
- 7 large rooms with storage and bathroom
- gymnasium/ Sanctuary 104 x 77 with ceiling height of 50'
- Large kitchen with pantry and laundry room attached
- Main Level [Floor Plan Link](#)



**BERKSHIRE
HATHAWAY**

HomeServices

C. Dan Joyner, REALTORS®

COMMERCIAL DIVISION

Religious and/or Educational Building
9 Beth Dr | Greenville, SC 29609

For Sale
\$2,500,000



29,870±SF Brick Building
Upper level is being used as administrative offices
with a large unfinished space of 124 x 36

- 7 offices approx 12 x 16
- 1 large office 38 x 28 with private restroom
- Reception area located at the top of the stairs
- Work room
- Storage and supplies room
- Break room
- 2 Restrooms
- Library room & Conference room
- [Floor Plan Link](#)



Nelson Garrison
Commercial Sales & Leasing
NGarrison@JoynerCommercial.com
864-430-2356
www.JoynerCommercial.com



**BERKSHIRE
HATHAWAY**
HomeServices

C. Dan Joyner, REALTORS®

COMMERCIAL DIVISION

24 Vardry Street, Ste. 401 Greenville, SC 29601

©2018 BHH Affiliates, LLC. Real Estate Brokerage Services are offered through the network member franchisees of BHH Affiliates, LLC. Most franchisees are independently owned and operated. Berkshire Hathaway HomeServices and the Berkshire Hathaway HomeServices symbol are registered service marks of HomeServices of America, Inc.® Information not verified or guaranteed. If your property is currently listed with a Broker, this is not intended as a solicitation.