

# BARDMOOR MEDICAL ARTS BUILDING

8839 Bryan Dairy Rd. | Largo, FL 33777

MEDICAL OFFICE SUITES FOR LEASE



## PROPERTY HIGHLIGHTS

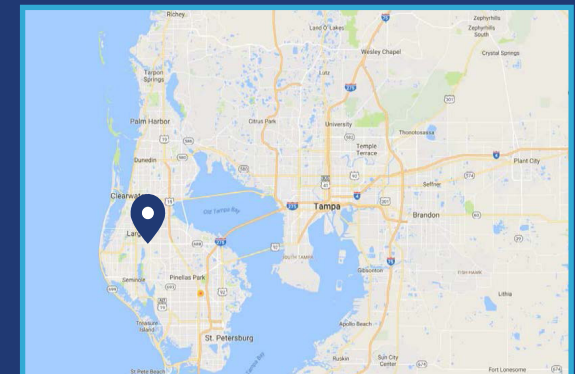
Medical Office Suites Immediately Available

Located on the BayCare Health Center campus in Largo, Florida.

Situated on the northeast corner at the signalized intersection of Bryan Dairy Road and Starkey Road

SUITE	SIZE	AVAILABLE
110	1,623 SF	1/1/18
220	2,173 SF	Now
235	2,741 SF	Now

**SUITES 235 & 220 CAN BE COMBINED FOR 5,000+ SF**



**For More Information, Please Contact**

**CLAY WOMMACK**

813.345.5886

SENIOR DIRECTOR

Clay.Wommack@FranklinSt.com

FranklinSt.com

Licensed Real Estate Broker

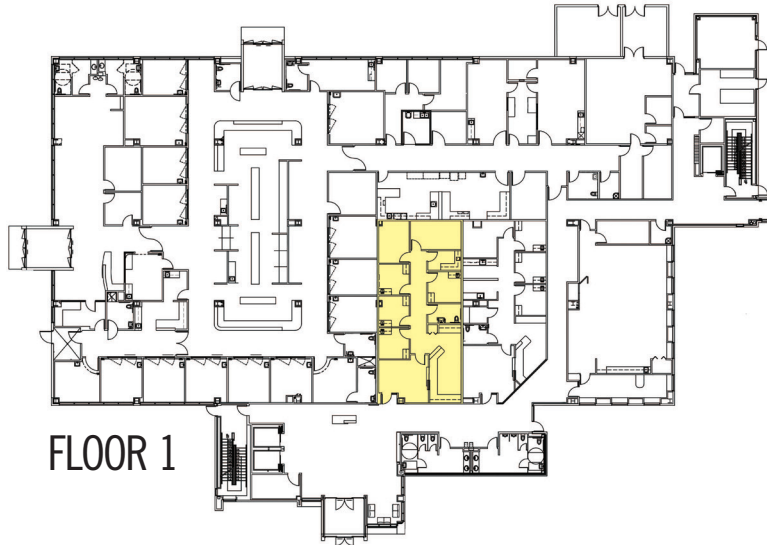
# BARDMOOR MEDICAL ARTS BUILDING

8839 Bryan Dairy Rd. | Largo, FL 33777

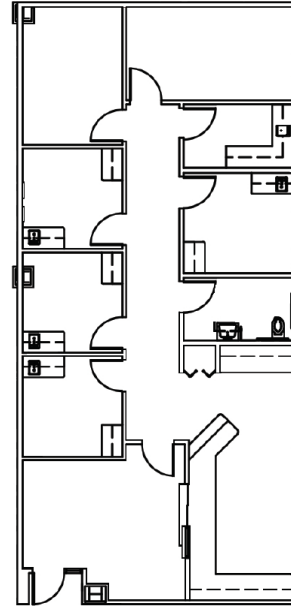
MEDICAL OFFICE SUITES FOR LEASE



PLANS NOT TO SCALE



FLOOR 1



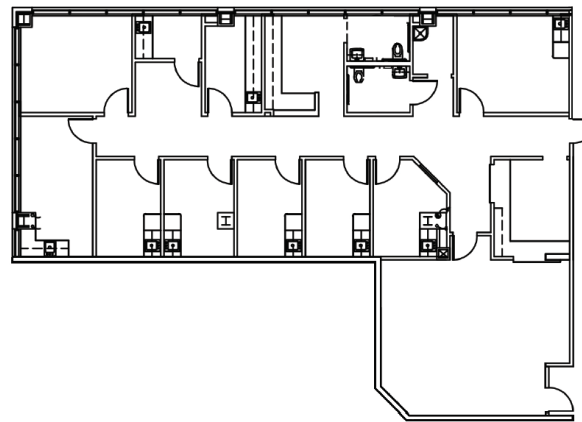
SUITE 110

FLOOR	SUITE	SF	AVAILABLE
1	110	1,623	1/1/2018
2	220	2,173	Now
2	235	2,741	Now

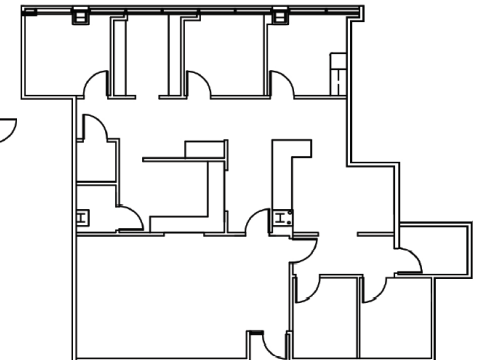
Suites 220 + 235 + Corridor  
can combine for 5,000+ SF



FLOOR 2



SUITE 235



SUITE 220

No warranty of representation, expressed or implied, is made to the accuracy of information contained herein, and same is submitted subject to errors, change of price, rental or other conditions, withdrawal without notice, and to any special listing conditions imposed by our principals.

FranklinSt.com

Licensed Real Estate Broker

813.345.5886 CLAY WOMMACK

Clay.Wommack@FranklinSt.com SENIOR DIRECTOR