

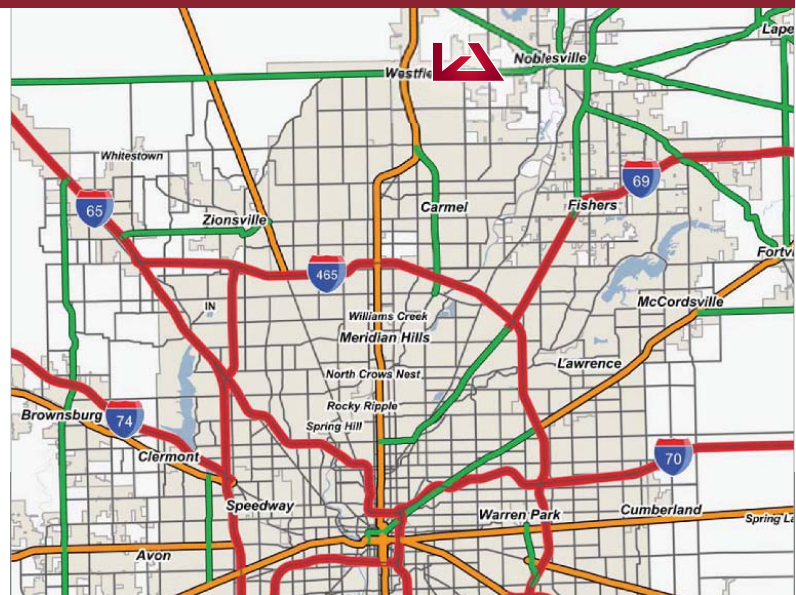
Sale/Lease/BTS

3302 Westfield Road
NOBLESVILLE, IN 46062



PROPERTY OVERVIEW

- > 25 acres of Land Available for Sale, Lease and/or Build To Suit Located at the North East Corner of State Road 32 and Gray Road in Noblesville; adjacent 32 acres under contract
- > Excellent Frontage on SR 32; Main East/West Corridor Connecting Noblesville and Westfield
- > Great Opportunity for Retail, Office, Senior Care and other/or other Development



TRAFFIC COUNTS

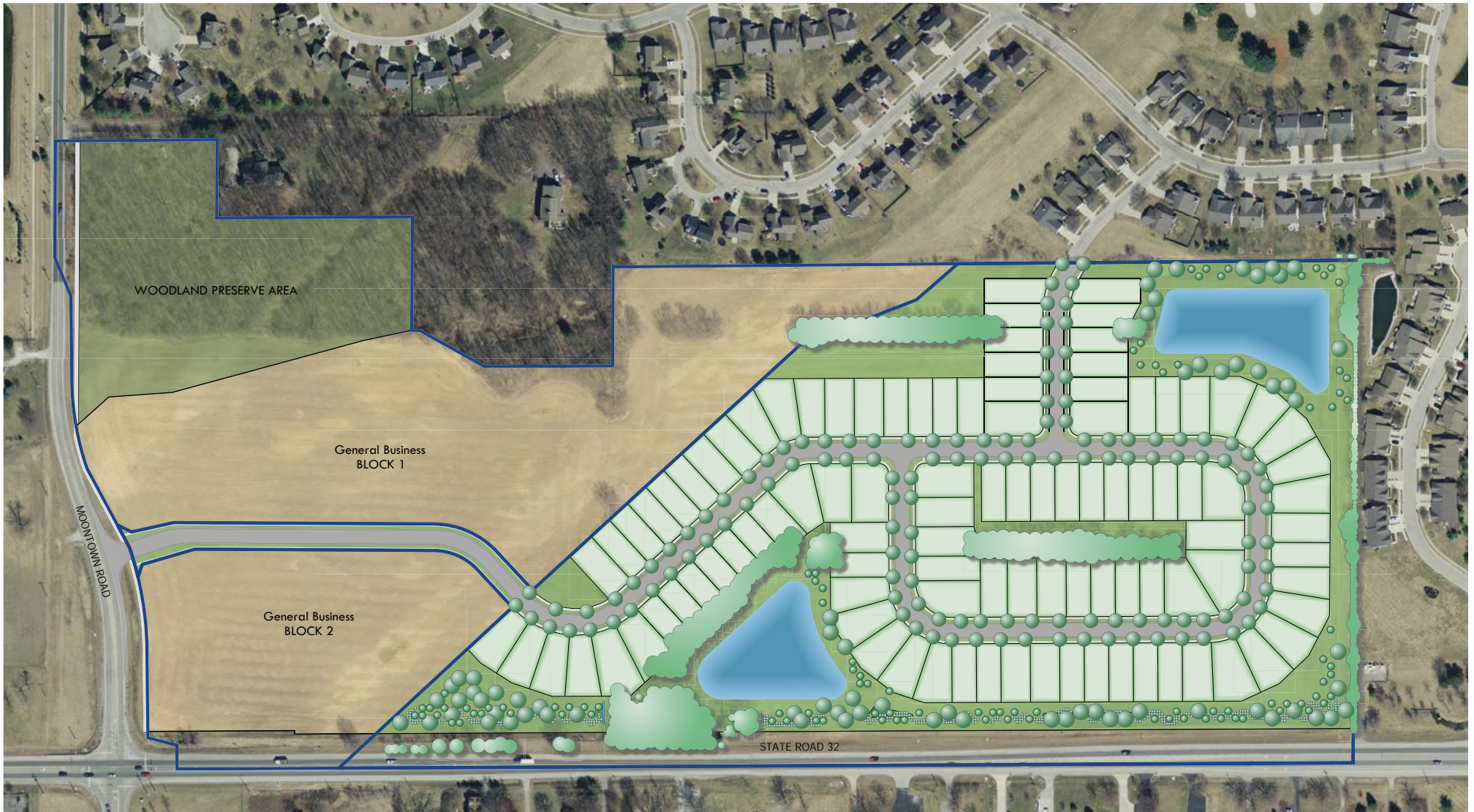
State Road 32: 19,130 ADT
Gray Road: 4,597 ADT

DEMOGRAPHICS

2016	1-Mile	3-Mile	5-Mile
Est. Population	5,041	31,210	101,195
Avg. HH Income	\$95,146	\$102,367	\$110,550
Daytime Pop.	1,198	10,149	32,723

Sale/Lease/BTS

3302 Westfield Road
NOBLESVILLE, IN 46062



10201 N. Illinois Street
Suite #275
Indianapolis, Indiana 46290
ph: 317.844.2700
fx: 317.848.2975
www.lee-associates.com

Bart Jackson
bjackson@lee-associates.com
C 317.370-0983

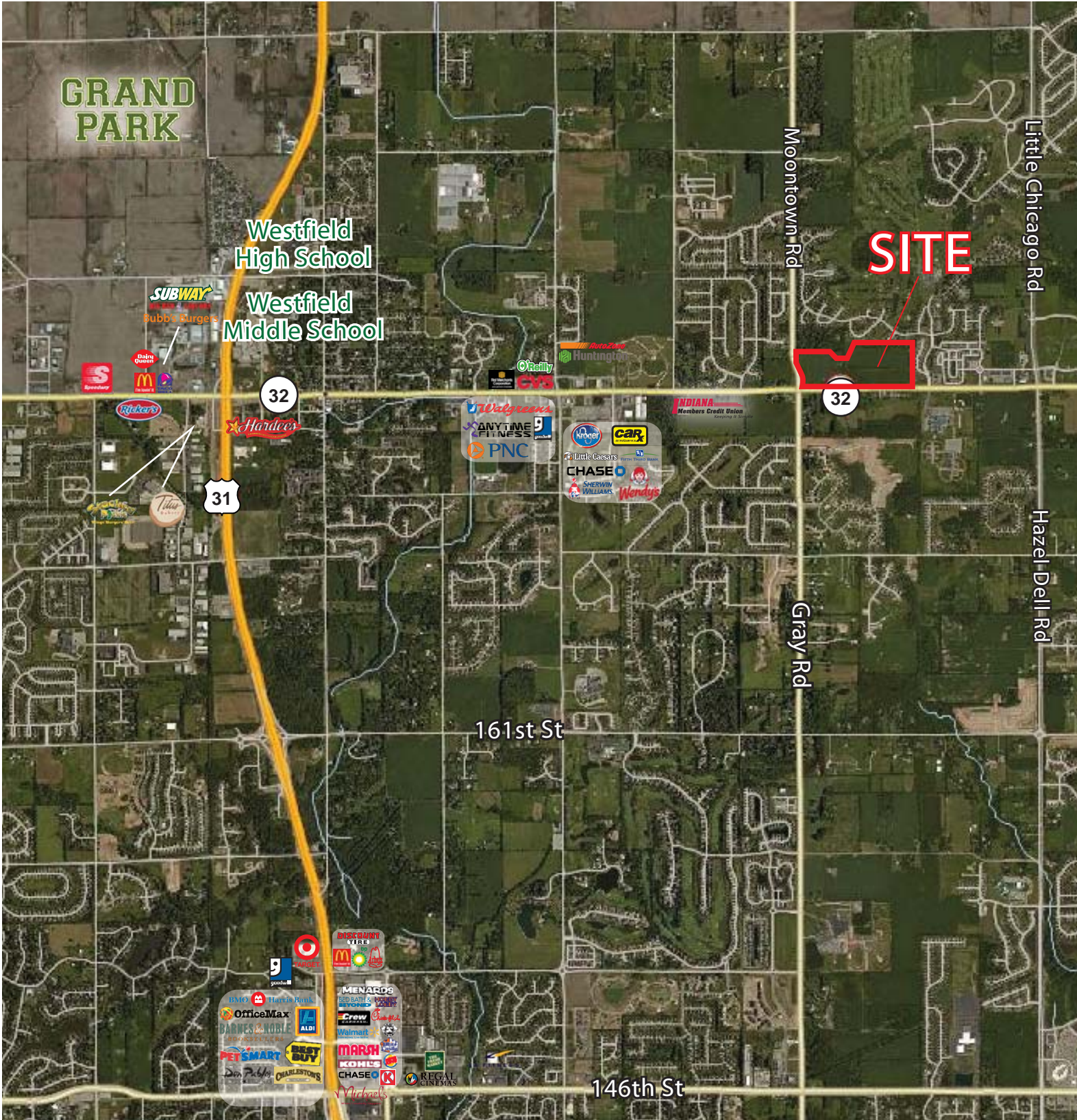


425 W. South Street
Indianapolis, IN 46225
ph: 317.340.3969
www.jacksonig.com

Matt Jackson
mjackson@jacksonig.com
D 317.340.3969

Sale/Lease/BTS

3302 Westfield Road
NOBLESVILLE, IN 46062



All information furnished regarding property for sale, rental or financing is from sources deemed reliable, but no warranty or representation is made to the accuracy thereof and same is submitted to errors, omissions, change of price, rental or other conditions prior to sale, lease or financing or withdrawal without notice. No liability of any kind is to be imposed on the broker herein.

