

11688 GATEWAY BOULEVARD • Los Angeles, CA 90064

BARRINGTON GATEWAY CENTER



QUICK SERVICE RESTAURANT
FOR LEASE



RAFAEL PADILLA
310.395.2663 X102

RAFAEL@PARCOMMERCIAL.COM
LIC# 00960188

ARTHUR PETER
310.395.2663 X101

ARTHUR@PARCOMMERCIAL.COM
LIC# 01068613

PROPERTY CHARACTERISTICS

11688 Gateway Boulevard, Los Angeles, CA 90064

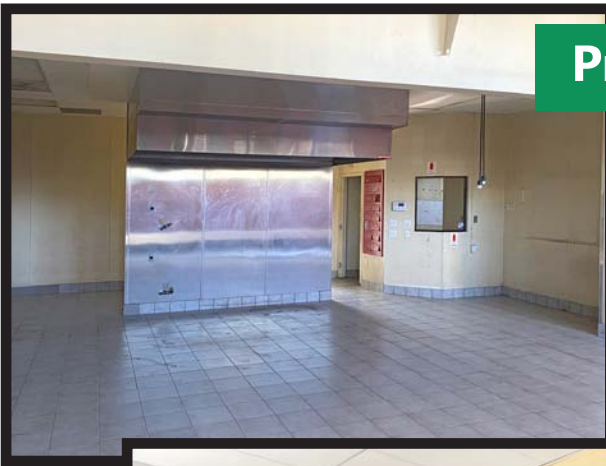
SIZE: Approximately 1,656 square feet

RATE: \$4.50 per square foot per month + NNN
(NNN estimated to be \$0.85 per square foot per month)

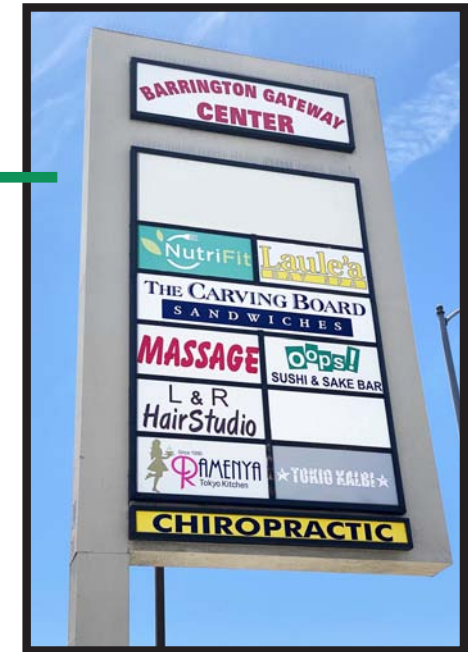
TERM: 5-10 years

PARKING: 41 shared parking spaces

AVAILABLE: Immediately



- Currently built out with type 2 hood, walk in refrigerator; no grease trap or inceptor
- Excellent location with good exposure and a signalized intersection
- Property has high visibility signage
- Located on the southeast corner of Barrington Avenue and Gateway Boulevard just blocks from the 405 and 10 fwy in West Los Angeles



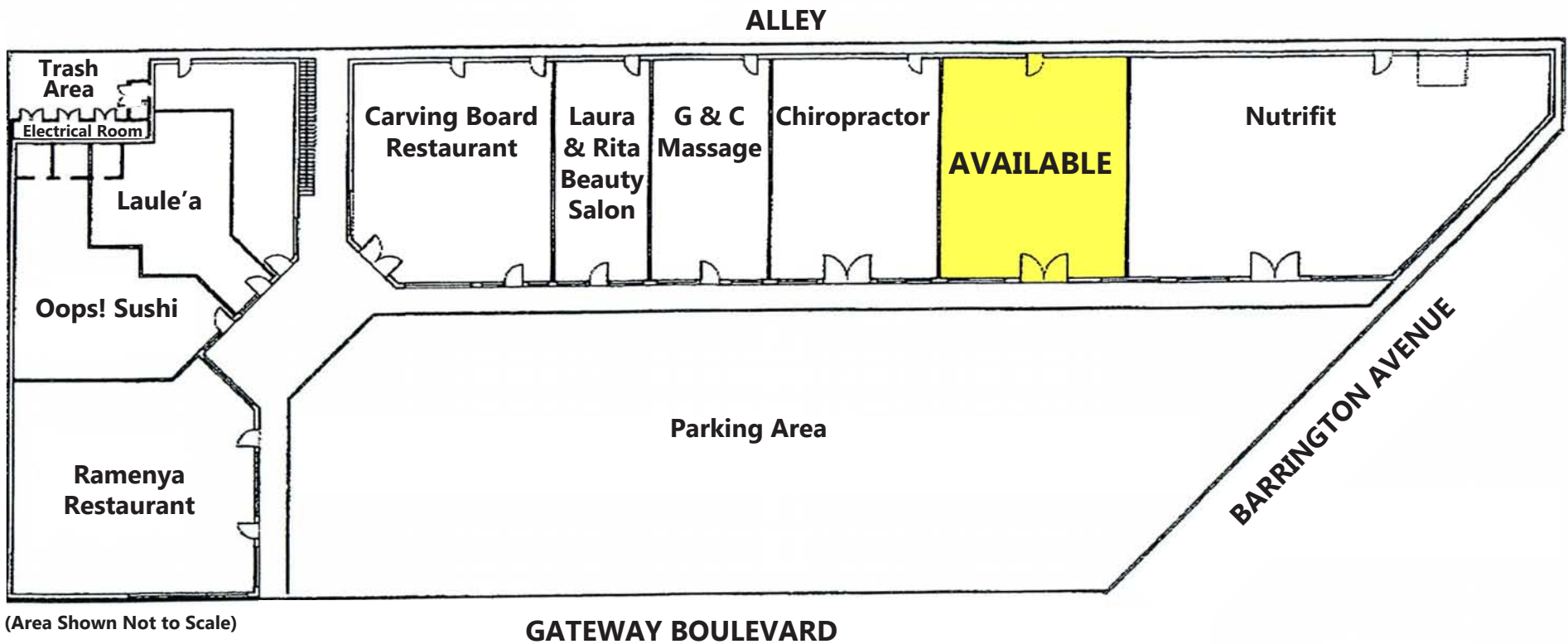
www.parcommercial.com

RAFAEL PADILLA
310.395.2663 X102
RAFAEL@PARCOMMERCIAL.COM
LIC# 00960188

ARTHUR PETER
310.395.2663 X101
ARTHUR@PARCOMMERCIAL.COM
LIC# 01068613

All information furnished is from sources deemed reliable and which we believe to be correct, but no representation or guarantee is given as to its accuracy and is subject to errors and omissions. All measurements are approximate and have not been verified by Broker. You are advised to conduct an independent investigation to verify all information.

1ST LEVEL FLOOR PLAN



www.parcommercial.com

RAFAEL PADILLA
310.395.2663 X102
RAFAEL@PARCOMMERCIAL.COM
LIC# 00960188

ARTHUR PETER
310.395.2663 X101
ARTHUR@PARCOMMERCIAL.COM
LIC# 01068613

All information furnished is from sources deemed reliable and which we believe to be correct, but no representation or guarantee is given as to its accuracy and is subject to errors and omissions. All measurements are approximate and have not been verified by Broker. You are advised to conduct an independent investigation to verify all information.

1ST LEVEL FLOOR PLAN



www.parcommercial.com

RAFAEL PADILLA
310.395.2663 X102
RAFAEL@PARCOMMERCIAL.COM
LIC# 00960188

ARTHUR PETER
310.395.2663 X101
ARTHUR@PARCOMMERCIAL.COM
LIC# 01068613

All information furnished is from sources deemed reliable and which we believe to be correct, but no representation or guarantee is given as to its accuracy and is subject to errors and omissions. All measurements are approximate and have not been verified by Broker. You are advised to conduct an independent investigation to verify all information.