

FOR LEASE



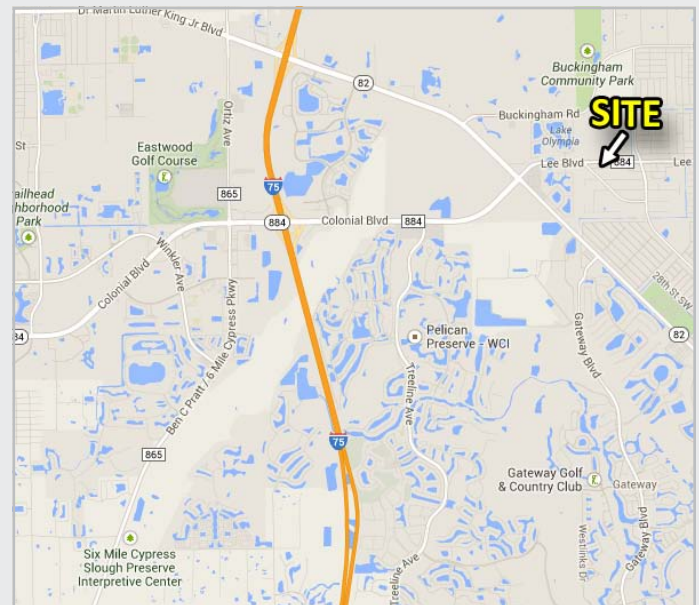
## Property Information

- Perfect for retail, medical, or professional office
- 1,256 - 2,643 SF units available
- Excellent street exposure - directly on Lee Blvd (SR 82)
- Traffic counts near 40,000 VPD
- New pylon sign with great visibility
- Building freshly painted
- Plenty of parking
- Only \$10.00 PSF NNN

## Demographics

	1-Mile	3-Mile	5-Mile
Population	4,760	35,062	78,321
Average HH Income	\$61,808	\$70,211	\$70,513
Households	1,524	12,,513	28,183
Employees	1,451	8,021	23,640

(Applied Geographic Solutions 2016)

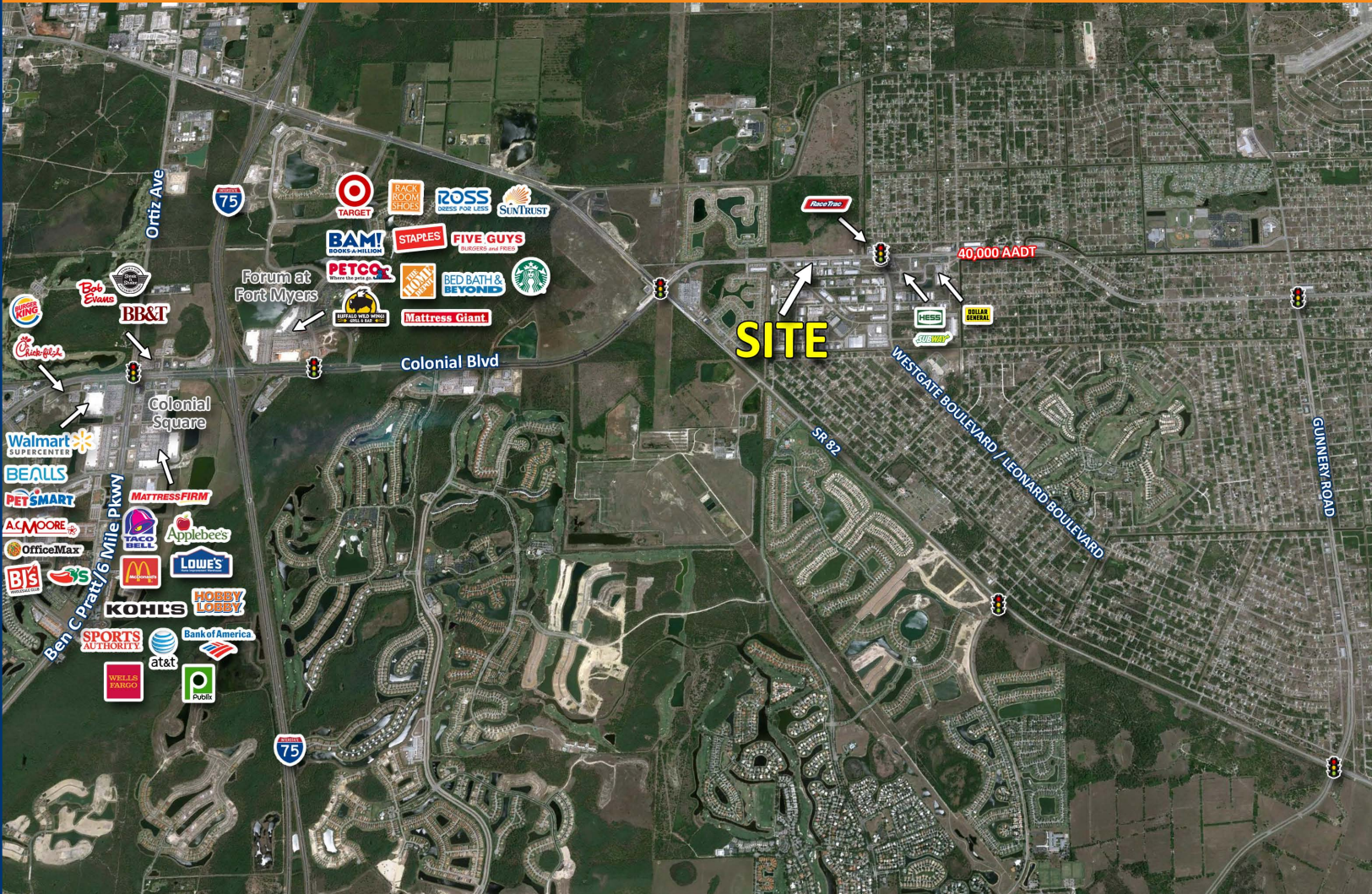


## For More Information Contact

Michelle Hoffmann  
Senior Associate  
Office: (239) 333-2508  
Cell: (239) 834-7102  
mhoffmann@lqwest.com







## UNIT INFORMATION

UNIT #	DESCRIPTION	SF
101-102	Corner unit with lots of windows. Open office space with private offices along perimeter. M/W restrooms, kitchenette	2,643 SF
112	Ready to move in professional office space. Nice finishes, reception/waiting area and private offices.	1,256 SF

1614 Colonial Blvd., Suite 101, Fort Myers, FL 33907

Office: 239.275.4922 | Fax: 239.275.4699 | www.lqwest.com

Information has been obtained from the owners or from other sources deemed reliable. We have no reason to doubt its accuracy but regret we can not guarantee it. All properties subject to change or withdrawal without notice.