

3,292 RSF FOR SUBLEASE

Sorrento West Business Park

11010 Roselle Street, Suite 100

San Diego, CA 92121

NOW AVAILABLE



BUILDING FEATURES

- + 3,292 SF Creative Office Suite
- + Close Proximity to I-5 and I-805
- + Walking distance to Coaster
- + Glass Roll-Up Door, with extensive window line
- + Parking: 2.9/1,000



CONTACT US

ANDREW EWALD

First Vice President | Lic. 01308891
+1 858 646 4786
andrew.ewald@cbre.com

ROSIE GONZALES

Client Services Specialist | Lic. 02003188
+1 858 646 4748
rosie.gonzales@cbre.com

CBRE, INC.

4365 Executive Drive, Suite 1600
San Diego, CA 92121
+1 858 546 4600

www.cbre.com/sandiego

CBRE

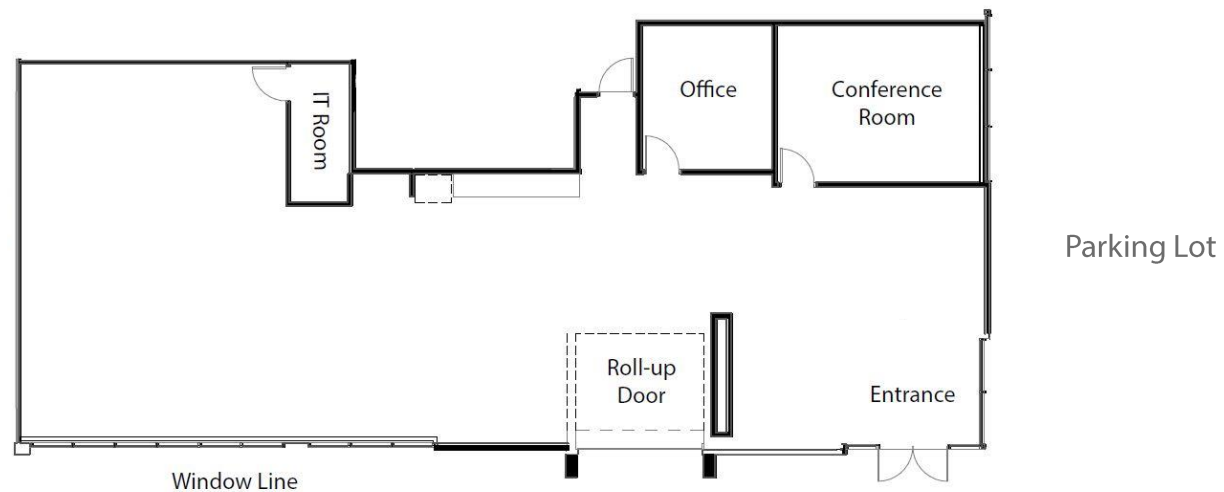
3,292 RSF FOR SUBLEASE SORRENTO WEST BUSINESS PARK

11010 Roselle Street
San Diego, CA 92121



SUITE 100

- + Approximately 3,292 SF
- + Available on July 1st, 2017
- + Expiration date: 2/28/2018, longer term available
- + Corner unit with extensive glass line
- + Exposed ceiling with glass roll-up door
- + Open office environment with 1 private office and 1 conference room.
- + Price: Negotiable
- + Common area restrooms



© 2017 CBRE, Inc. This information has been obtained from sources believed reliable. We have not verified it and make no guarantee, warranty or representation about it. Any projections, opinions, assumptions or estimates used are for example only and do not represent the current or future performance of the property. You and your advisors should conduct a careful, independent investigation of the property to determine to your satisfaction the suitability of the property for your needs. Photos herein are the property of their respective owners and use of these images without the express written consent of the owner is prohibited. CBRE and the CBRE logo are service marks of CBRE, Inc. and/or its affiliated or related companies in the United States and other countries. All other marks displayed on this document are the property of their respective owners.