

# FOR LEASE

**33 Bullet Hill Road  
Southbury, CT 06488**



## **BULLET HILL OFFICE PARK**

**24,000 s/f multi building commercial center  
Ideal for professional, medical or retail uses  
High profile prominent location at Exit 15 I84**

- **Bldg 2 Lower Level     Suite 206            1,052 s/f  
   Lease rate \$12.00 + Nets (+/- \$4.00 PSF)**
- **Bldg 3 Lower Level     Suite 303            850 s/f  
   Lease Rate \$12.00 + Nets (+/- \$4.00 PSF)**

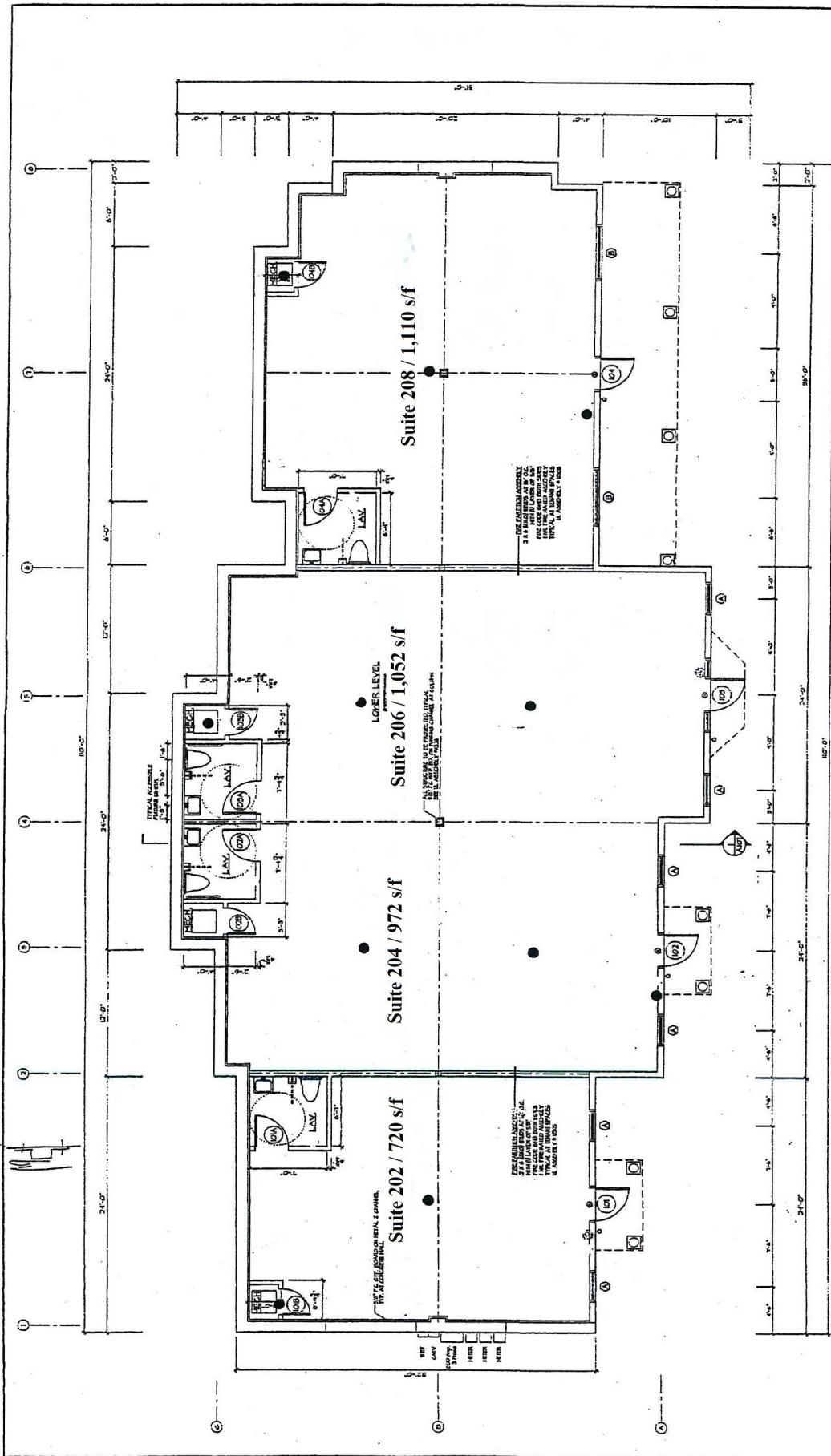
## **MATTHEWS COMMERCIAL PROPERTIES LLC**

**819 Straits Turnpike Suite 3B, Middlebury, CT 06762  
Phone: 203-753-5800 / Fax: 203-574-3875  
Web site: [www.matthewscommercial.com](http://www.matthewscommercial.com)**



**CONTACT: GERRY D. MATTHEWS  
Email: [gdmattthews@snet.net](mailto:gdmattthews@snet.net)**

All information furnished is from sources deemed reliable and is submitted subject to errors, omissions, change of other terms of conditions, prior sale, lease or financing or withdrawal-all without notice. No representation is made or implied by Matthews Commercial Properties, LLC or its associates as to the accuracy of the information submitted herein.



**LEGEND**  
 100% MECHANICAL SYMBOLS  
 100% ELECTRICAL SYMBOLS  
 100% PLUMBING SYMBOLS

Drawing Title		Drawing Number	
BUILDING A Lower Level Floor Plan		A.100	
Author	Checked	Date	Scale
10/10/00	10/10/00	10/10/00	1/4" = 1'-0"

Revisions	
No.	Description
1	ISSUED FOR PERMIT

**General Notes**  
 1. ALL DIMENSIONS ARE TO FACE UNLESS NOTED OTHERWISE.  
 2. ALL FINISHES TO BE AS SHOWN ON THE FINISH SCHEDULE.  
 3. ALL WORK TO BE IN ACCORDANCE WITH THE 2000 INTERNATIONAL BUILDING CODE AND ALL APPLICABLE LOCAL, STATE AND FEDERAL CODES AND ORDINANCES.  
 4. ALL WORK TO BE IN ACCORDANCE WITH THE 2000 INTERNATIONAL MECHANICAL AND ELECTRICAL PLUMBING CODE AND ALL APPLICABLE LOCAL, STATE AND FEDERAL CODES AND ORDINANCES.  
 5. ALL WORK TO BE IN ACCORDANCE WITH THE 2000 INTERNATIONAL FIRE AND SAFETY CODE AND ALL APPLICABLE LOCAL, STATE AND FEDERAL CODES AND ORDINANCES.  
 6. ALL WORK TO BE IN ACCORDANCE WITH THE 2000 INTERNATIONAL ENERGY CONSERVATION CODE AND ALL APPLICABLE LOCAL, STATE AND FEDERAL CODES AND ORDINANCES.  
 7. ALL WORK TO BE IN ACCORDANCE WITH THE 2000 INTERNATIONAL PLUMBING AND MECHANICAL CODE AND ALL APPLICABLE LOCAL, STATE AND FEDERAL CODES AND ORDINANCES.  
 8. ALL WORK TO BE IN ACCORDANCE WITH THE 2000 INTERNATIONAL ELECTRICAL CODE AND ALL APPLICABLE LOCAL, STATE AND FEDERAL CODES AND ORDINANCES.  
 9. ALL WORK TO BE IN ACCORDANCE WITH THE 2000 INTERNATIONAL FIRE AND SAFETY CODE AND ALL APPLICABLE LOCAL, STATE AND FEDERAL CODES AND ORDINANCES.  
 10. ALL WORK TO BE IN ACCORDANCE WITH THE 2000 INTERNATIONAL MECHANICAL AND ELECTRICAL PLUMBING CODE AND ALL APPLICABLE LOCAL, STATE AND FEDERAL CODES AND ORDINANCES.

**BSA**  
 Bennett Sullivan Associates  
 Architects and Planners  
 1000 North 10th Street  
 Suite 200  
 Minneapolis, MN 55401  
 Phone: 612.338.1000  
 Fax: 612.338.1001  
 E-mail: bsainfo@bsa.com

**Bullet Hill Park**  
 Building A  
 1000 North 10th Street  
 Suite 200  
 Minneapolis, MN 55401

**100** SCALE: 1/4" = 1'-0"