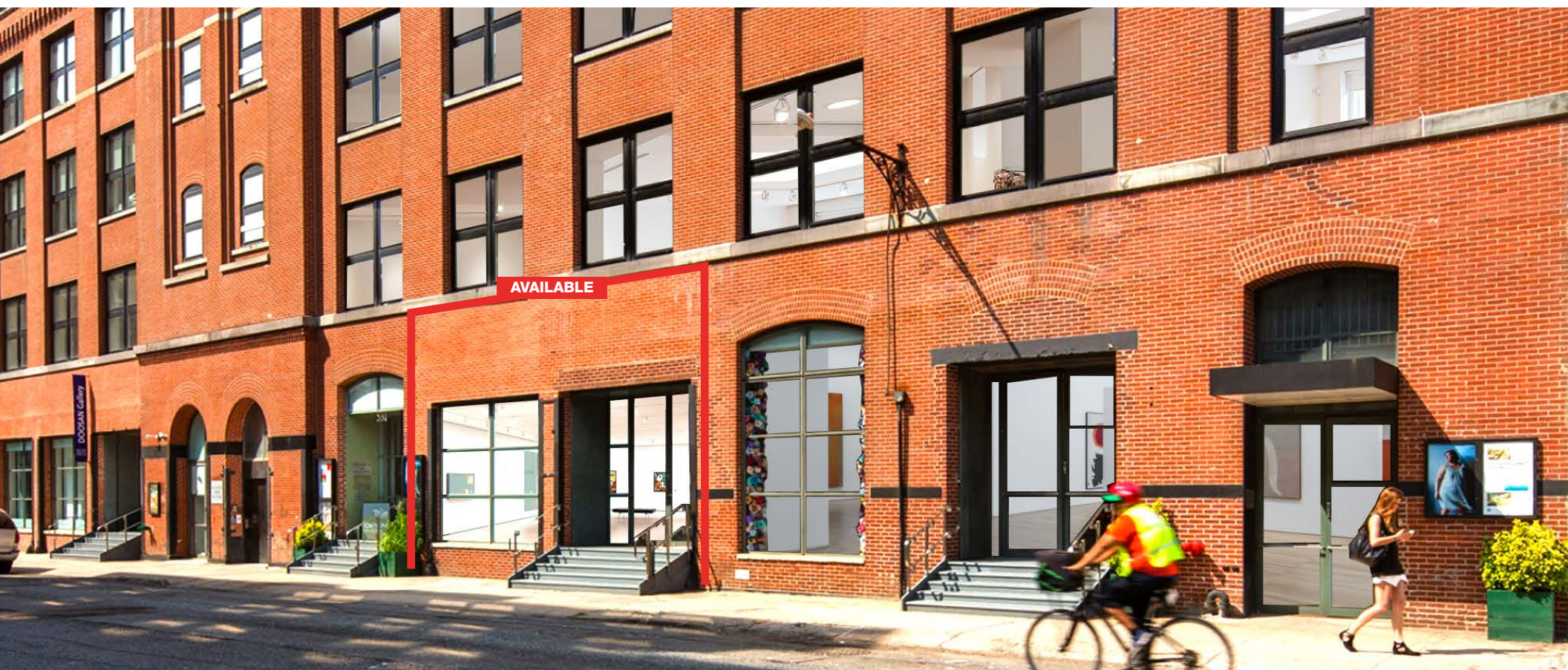


CHELSEA

NEW YORK
NY

531 WEST 25TH STREET



SPACE DETAILS

LOCATION

North block between Tenth and Eleventh Avenues

APPROXIMATE SIZE

Ground Floor 3,237 SF

CEILING HEIGHT

Ground Floor 13 FT

FRONTAGE

28 FT on West 25th Street

TERM

Negotiable

POSSESSION

Immediate

SITE STATUS

Currently Bernaducci Gallery

NEIGHBORS

Chelsea Art Tower, Pace Gallery (coming soon), The Avenues School, Chase Bank, Marquee, CVS pharmacy and Doosan Gallery

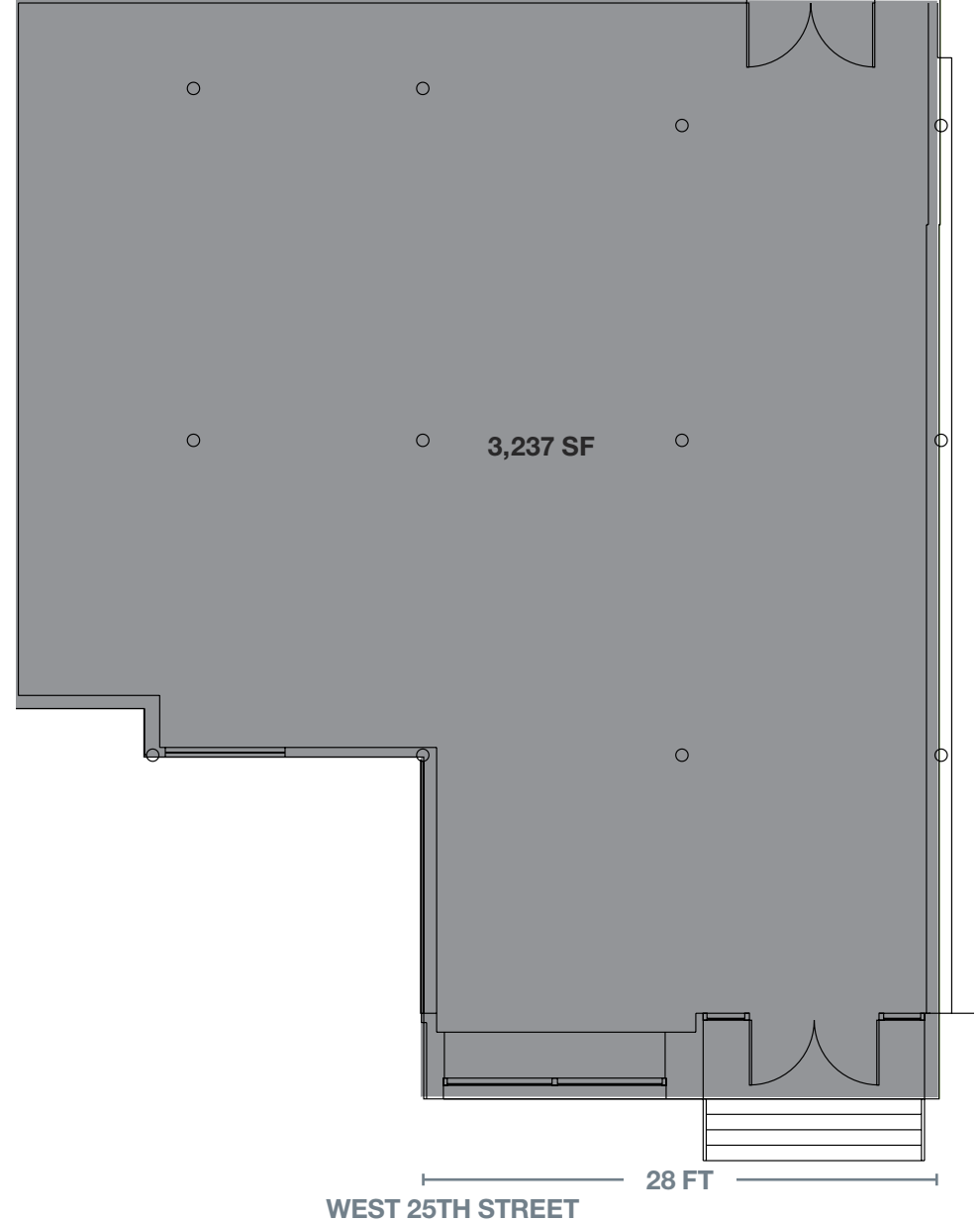
COMMENTS

At the base of L&L Holding Company's "Ironworks" Class-A office building, anchored by WeWork which recently signed for over 90,000 SF

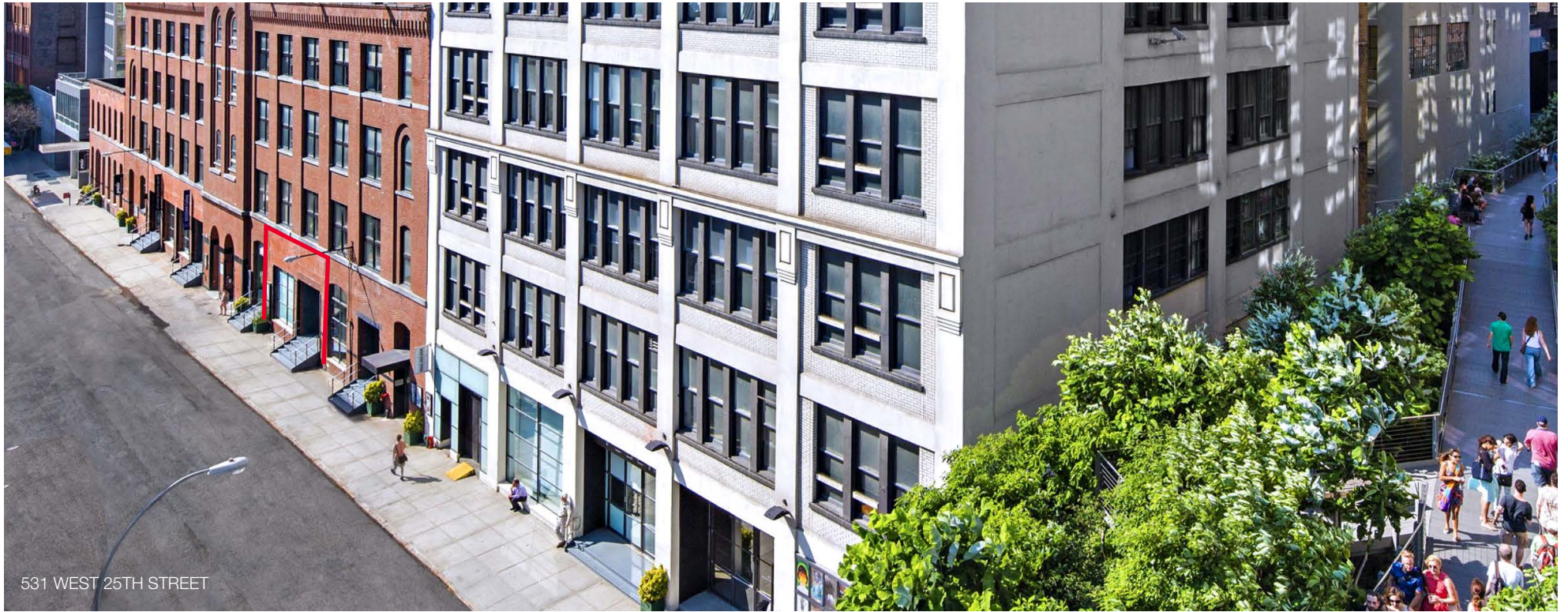
Adjacent to the High Line and in close proximity to the 7 C E subway lines

Neighboring Hudson Yards with more than 18 million SF of commercial and residential space

GROUND FLOOR



AREA PHOTOS



531 WEST 25TH STREET



531 WEST 25TH STREET INTERIOR PHOTO



HUDSON YARDS

AREA RETAIL



CONTACT EXCLUSIVE AGENT

HARRISON ABRAMOWITZ
212.372.2467
habramowitz@ngkf.com



NGKF.COM



RKF.COM

© 2019 NEWMARK KNIGHT FRANK RETAIL. | ROBERT K. FUTTERMAN & ASSOCIATES, LLC The information contained herein has been obtained from sources deemed reliable but has not been verified and no guarantee, warranty or representation, either express or implied, is made with respect to such information. Terms of sale or lease and availability are subject to change or withdrawal without notice.