



## 32830 Bowie Street

White Castle, Louisiana 70788

### Property Features

- 8,000 SF of Open Space
- 30 Parking Spaces
- Ideal for Hardware Store or Meeting Hall
- Across from Daigle's Supermarket & Iberville Library



SALE PRICE: **\$280,000**

LOT SIZE: **0.77 Acres**

BUILDING SIZE: **8,000 SF**

For more information:

**Evan Scroggs, CCIM**

225 297 7415 • [evanscroggs@latterblum.com](mailto:evanscroggs@latterblum.com)

NO WARRANTY OR REPRESENTATION, EXPRESS OR IMPLIED, IS MADE AS TO THE ACCURACY OF THE INFORMATION CONTAINED HEREIN, AND THE SAME IS SUBMITTED SUBJECT TO ERRORS, OMISSIONS, CHANGE OF PRICE, RENTAL OR OTHER CONDITIONS, PRIOR SALE, LEASE OR FINANCING, OR WITHDRAWAL WITHOUT NOTICE, AND OF ANY SPECIAL LISTING CONDITIONS IMPOSED BY OUR PRINCIPALS NO WARRANTIES OR REPRESENTATIONS ARE MADE AS TO THE CONDITION OF THE PROPERTY OR ANY HAZARDS CONTAINED THEREIN ARE ANY TO BE IMPLIED.

NAI Latter & Blum

1700 City Farm Drive, Baton Rouge, LA 70806

225 295 0800

[latterblum.com](http://latterblum.com)

For Sale

Retail



## Property Summary

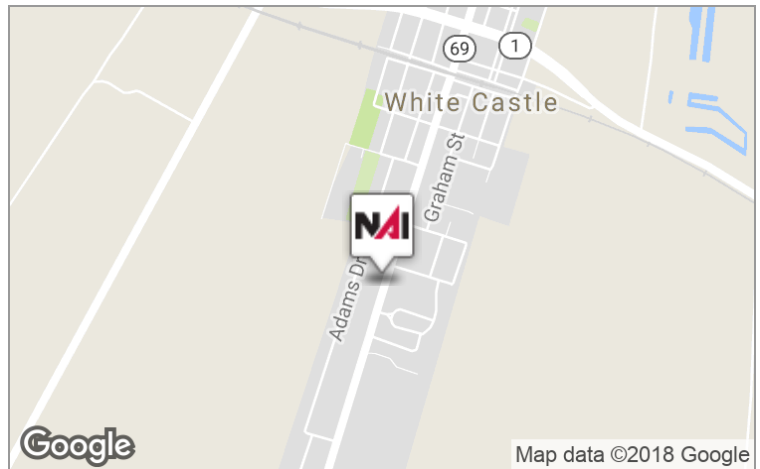
Sale Price: \$280,000

Lot Size: 0.77 Acres

Building Size: 8,000 SF

Market: Baton Rouge MSA

Sub Market: White Castle - Iberville Parish



## Demographics

	1 Mile	5 Miles	10 Miles
Total Households:	32	969	8,720
Total Population:	85	3,315	26,883
Average HH Income:	\$60,657	\$58,605	\$54,840



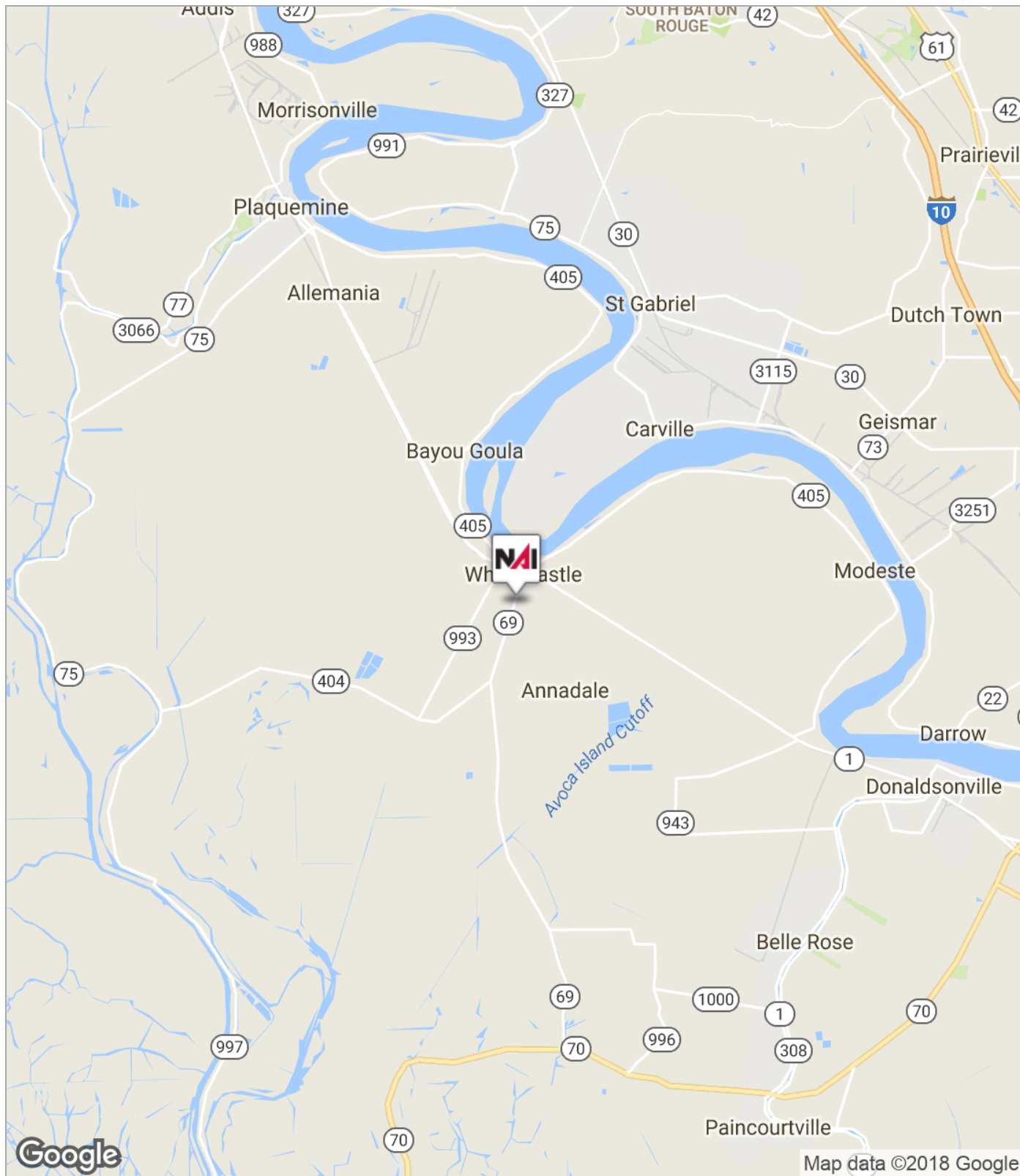
For Sale

Retail



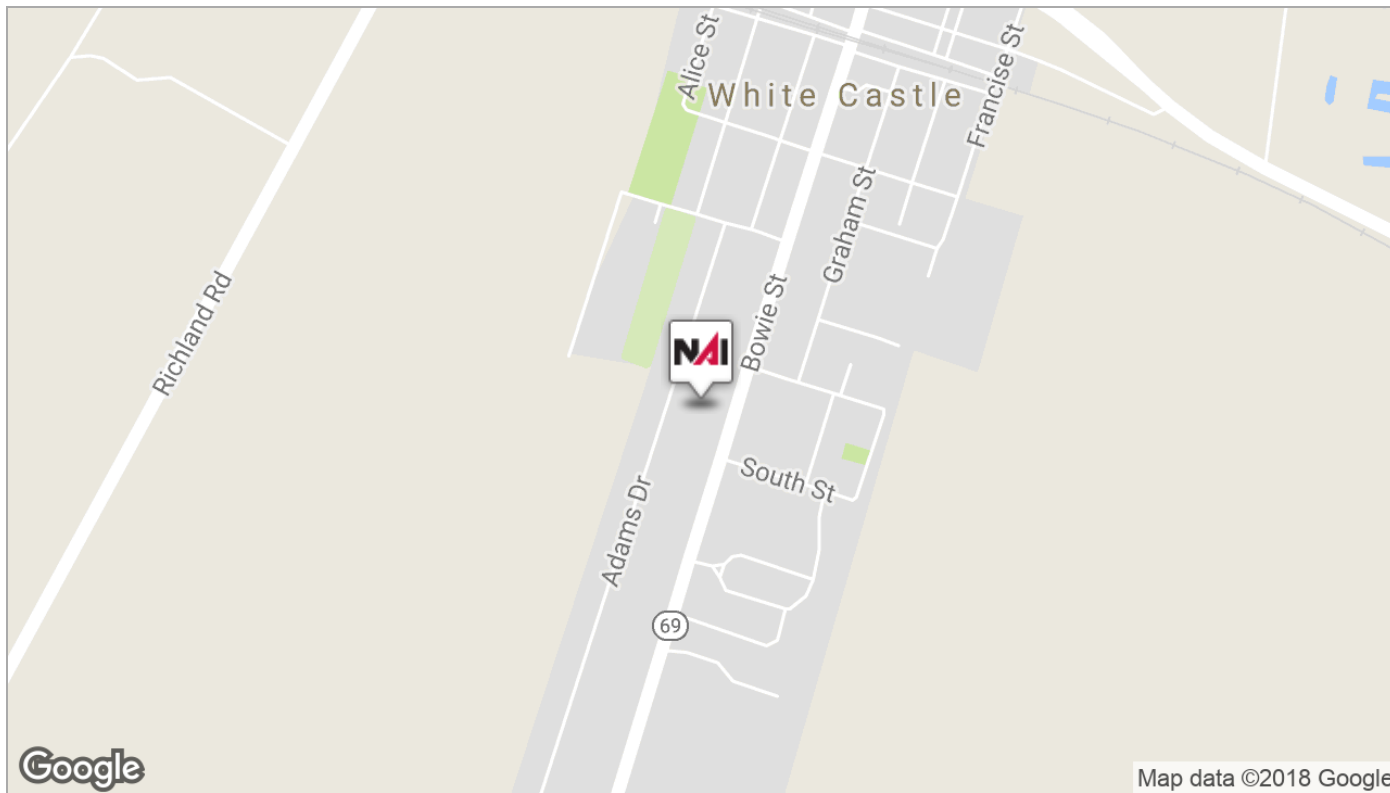
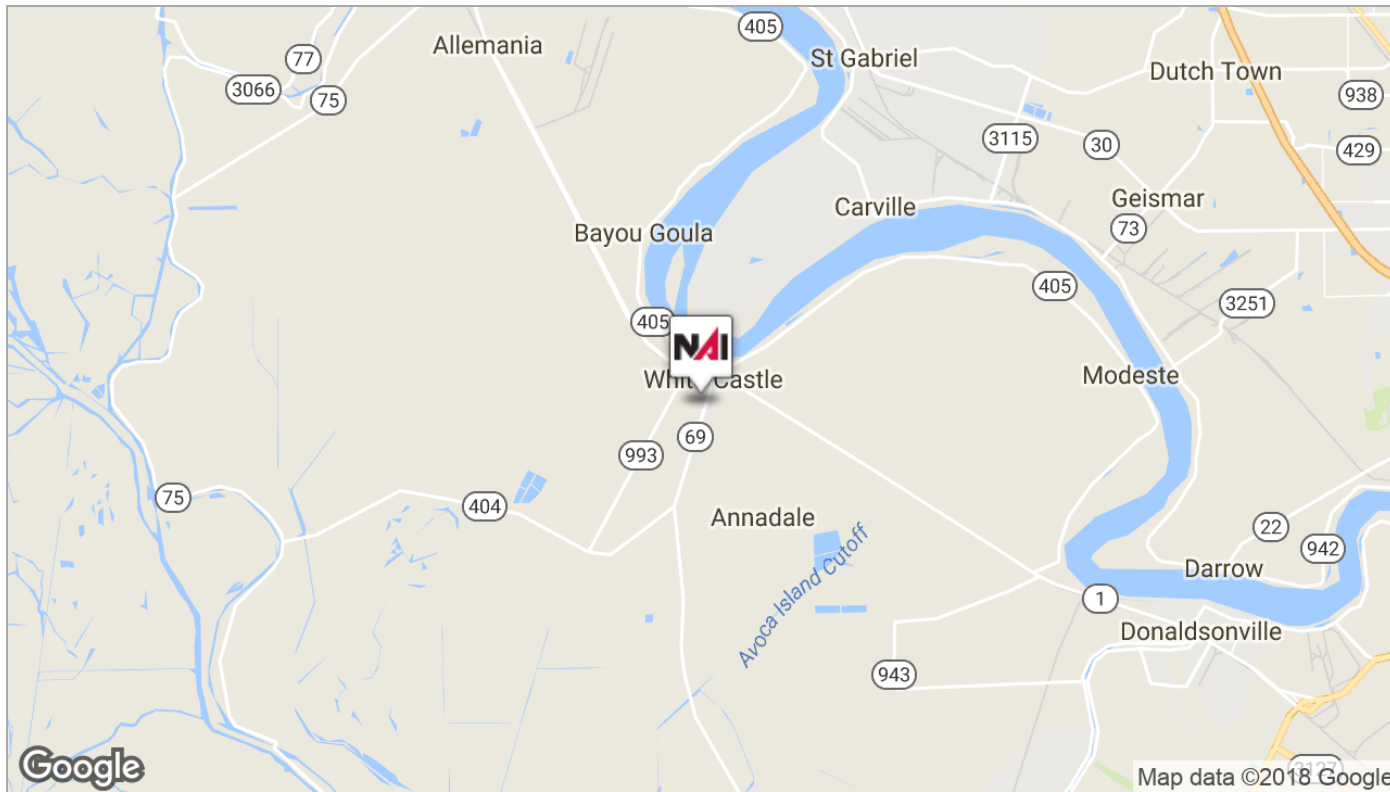
For Sale

# Retail



For Sale

# Retail





For Sale

Retail





For Sale

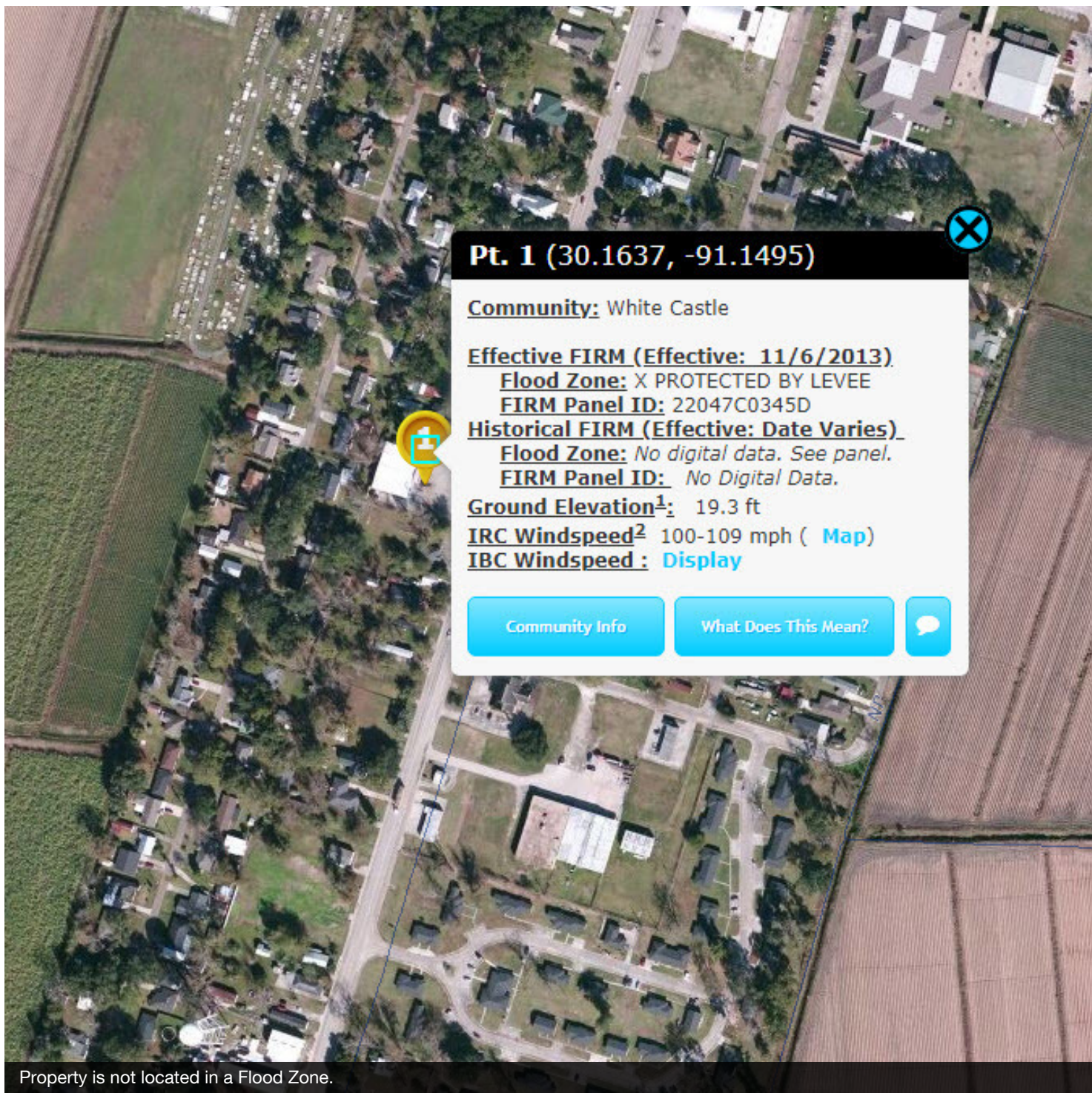
# Retail





For Sale

# Retail



**Pt. 1 (30.1637, -91.1495)**

**Community:** White Castle

**Effective FIRM (Effective: 11/6/2013)**

**Flood Zone:** X PROTECTED BY LEVEE

**FIRM Panel ID:** 22047C0345D

**Historical FIRM (Effective: Date Varies)**

**Flood Zone:** No digital data. See panel.

**FIRM Panel ID:** No Digital Data.

**Ground Elevation<sup>1</sup>:** 19.3 ft

**IRC Windspeed<sup>2</sup>:** 100-109 mph ( [Map](#) )

**IBC Windspeed :** [Display](#)

Community Info

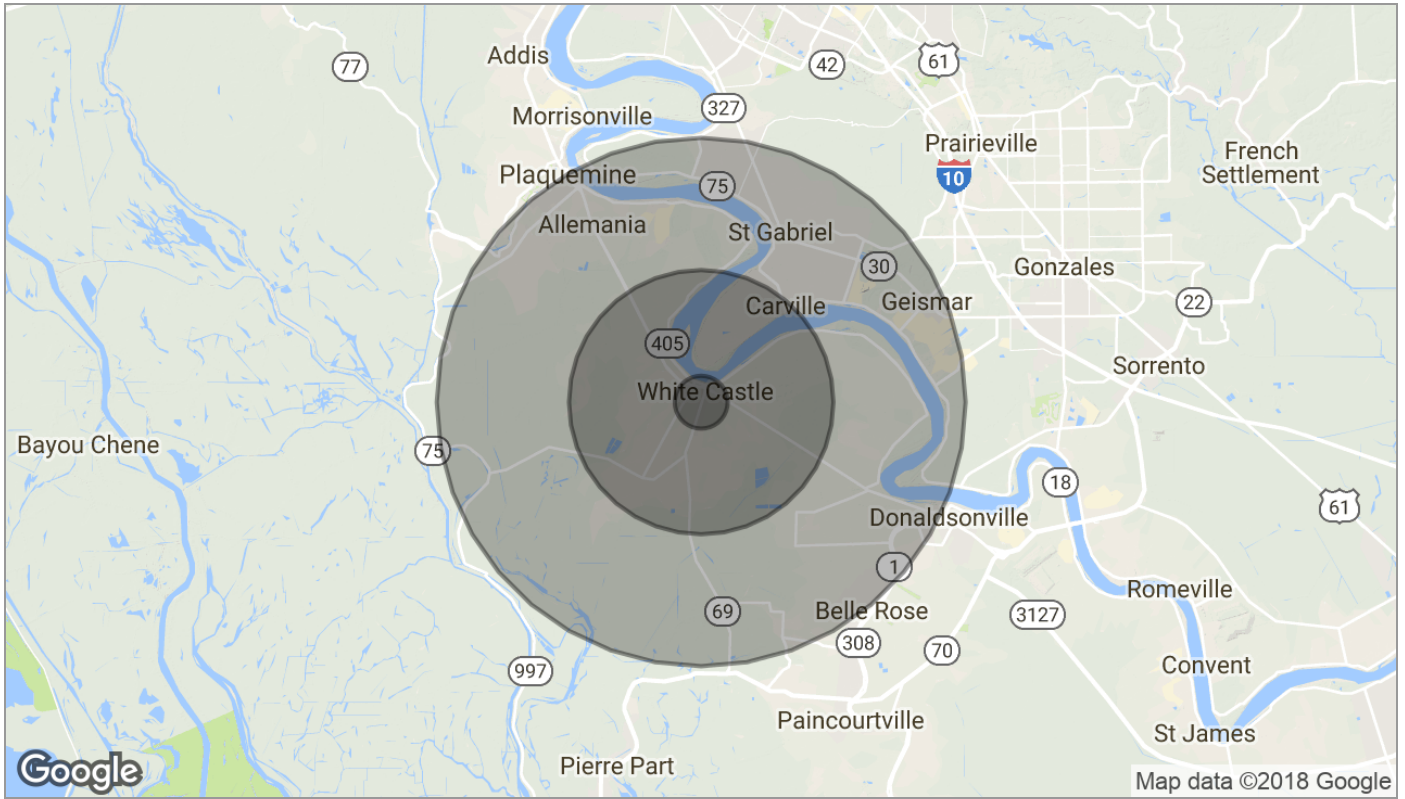
What Does This Mean?

Property is not located in a Flood Zone.



For Sale

# Retail



<b>Population</b>	<b>1 Mile</b>	<b>5 Miles</b>	<b>10 Miles</b>
TOTAL POPULATION	85	3,315	26,883
MEDIAN AGE	39.5	38.0	36.9
MEDIAN AGE (MALE)	36.6	36.8	35.5
MEDIAN AGE (FEMALE)	41.7	38.8	38.4
<b>Households &amp; Income</b>	<b>1 Mile</b>	<b>5 Miles</b>	<b>10 Miles</b>
TOTAL HOUSEHOLDS	32	969	8,720
# OF PERSONS PER HH	2.7	3.4	3.1
AVERAGE HH INCOME	\$60,657	\$58,605	\$54,840
AVERAGE HOUSE VALUE	\$135,368	\$130,444	\$111,649
<b>Race</b>	<b>1 Mile</b>	<b>5 Miles</b>	<b>10 Miles</b>
% WHITE	56.5%	50.3%	42.7%
% BLACK	41.2%	48.4%	55.7%
% ASIAN	0.0%	0.0%	0.2%
% HAWAIIAN	0.0%	0.0%	0.1%
% INDIAN	0.0%	0.0%	0.0%
% OTHER	0.0%	0.3%	0.6%
<b>Ethnicity</b>	<b>1 Mile</b>	<b>5 Miles</b>	<b>10 Miles</b>
% HISPANIC	2.4%	2.1%	2.1%

\* Demographic data derived from 2010 US Census