



SANTA ROSA PLAZA • RETAIL AVAILABLE

4942 HIGHWAY 98 • SANTA ROSA BEACH, FLORIDA

LEASE

Santa Rosa Plaza
4942 Highway 98
Santa Rosa Beach, FL 32459

BUILDING SIZE

31,640 SF

AVAILABLE

- Suite 6: 3,000 SF
- Suite 11: 2,400 SF
- Suite 15: 1,600 SF
- Suite 24: 1,200 SF

COMMENTS

- Excellent location just east of the Highway 30A intersection
- Highly visible from eastbound and westbound traffic
- Traffic signal provides convenient ingress/egress from Highway 98

PRICING

\$14.00 PSF NNN

EXCLUSIVE AGENT:

Jason Carnes
Graham & Company
850.830.6593
jasonc@grahamcompany.com



100 Richard Jackson Blvd
Suite 115
Panama City Beach, FL 32407

TEL 850.563.1500
FAX 850.563.1500
grahamcompany.com

Information deemed reliable, but not guaranteed.



SANTA ROSA PLAZA • RETAIL AVAILABLE

4942 HIGHWAY 98 • SANTA ROSA BEACH, FLORIDA

Walton County, Florida Tourism Information*

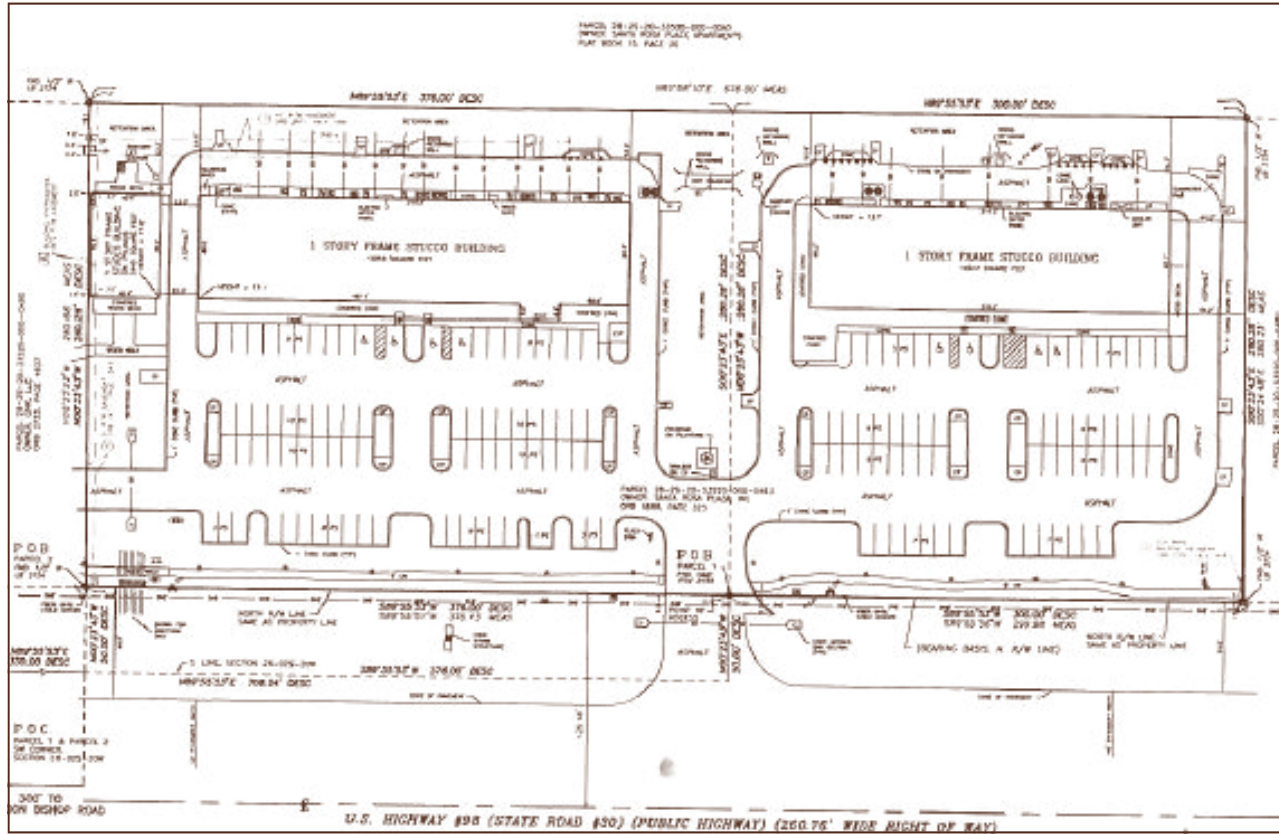
- ◆ 12 million visitor nights in 2013
- ◆ \$146,000 Avg HH Income of the Walton County Visitor
- ◆ \$18.59 million in bed taxes collected in 2013, a 12.71% increase from 2012
- ◆ 35,500 Average Daily Traffic Count (Santa Rosa Plaza)

*Source: Visit South Walton Tourism Development Council



SANTA ROSA PLAZA • RETAIL AVAILABLE

4942 HIGHWAY 98 • SANTA ROSA BEACH, FLORIDA



100 Richard Jackson Blvd
Suite 115
Panama City Beach, FL 32407

TEL 850.563.1500
FAX 850.563.1500
grahamcompany.com

Information deemed reliable, but not guaranteed.