



# 820 DAVIS STREET

DOWNTOWN EVANSTON, IL

SPACE AVAILABLE  
TYPICAL QUALITY \$100

**RETAIL  
SPACE AVAILABLE**

EVANSTON RETAIL SPACE AVAILABLE  
**820 DAVIS STREET**  
 Downtown | Evanston, IL



**SPACE AVAILABLE**

Up to 15,405 SF of Ground Floor Retail (Divisible)

**SITE SUMMARY**

- 80 feet of frontage at the base of a 77,000 SF office building with new ownership, undergoing large-scale renovation
- Black iron capable
- Centrally located in downtown Evanston home to world-renowned Northwestern University, with 20,000 students and 10,000 staff and faculty
- Steps to CTA and Metra Rail stations, serving 1.2 million riders to and from Chicago and affluent North Shore suburbs
- 1,500+ public parking spaces directly across Davis at Sherman Plaza
- 1,500 luxury residential units currently under development, adding to nearly 1,000 units delivered in the last 5 years

**JOIN:**

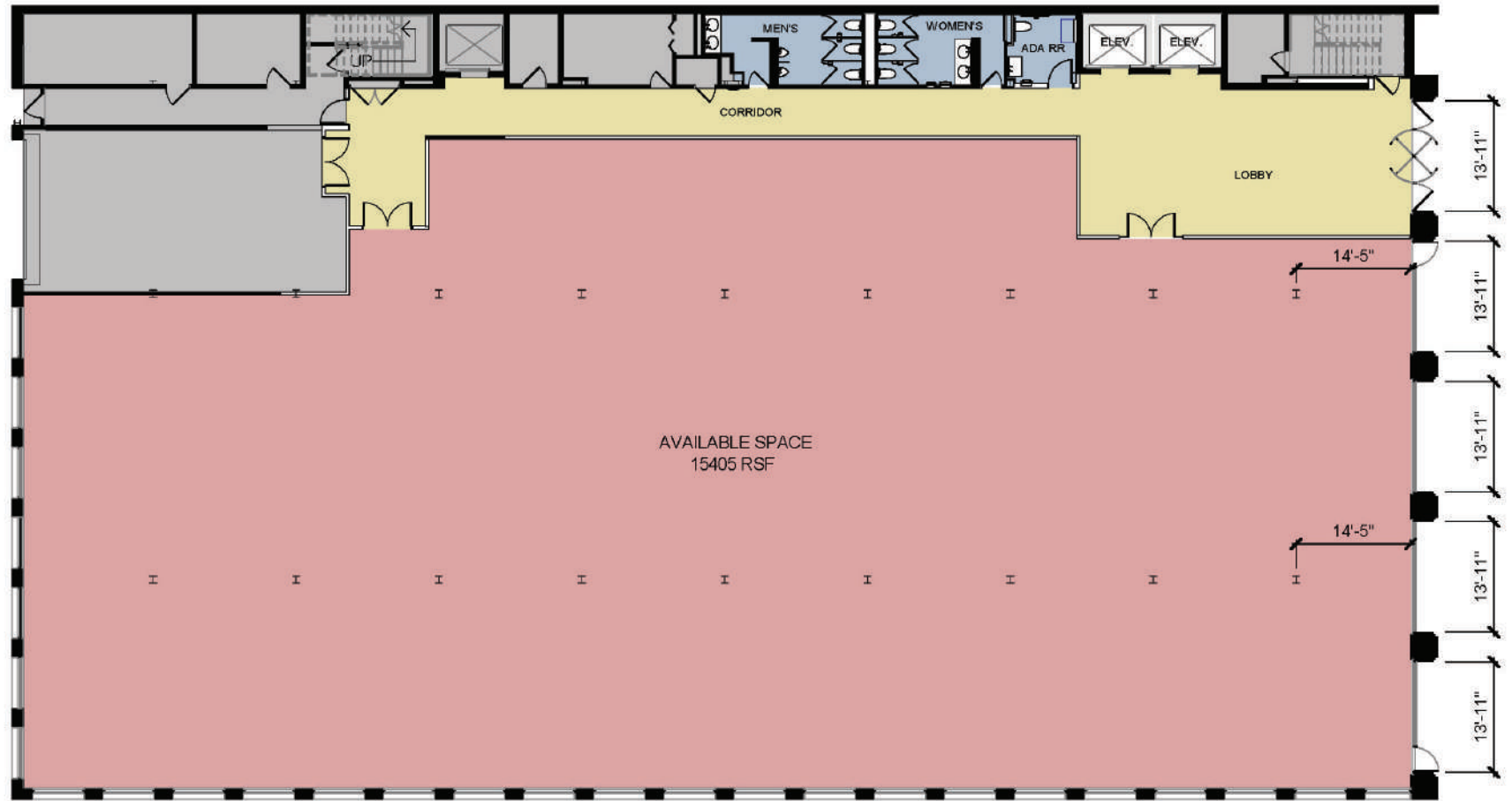


URBAN OUTFITTERS

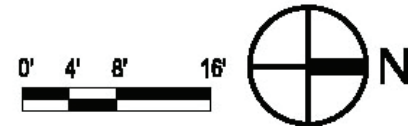


Northwestern University

<b>POPULATION DENSITY</b>	35,256	1 Mile
	180,024	3 Mile
	434,534	5 Mile
<b>FULL TIME EMPLOYEES</b>	33,836	1 Mile
	85,152	3 Mile
	199,064	5 Mile
<b>AVERAGE HH INCOME</b>	\$114,927	1 Mile
	\$109,460	3 Mile
	\$99,371	5 Mile



LEVEL 1 | OVERALL FLOOR RSF: 15,405 SF



**CONTACT**  
Matt Cavanagh  
matt@arcgrp.com  
(630) 908-5694

© 2019 A·R·C Real Estate. All information is from sources believed reliable, not independently verified, and thus subject to errors, omissions, and modifications such as price, listing, square footage, rates and commissions. All information, estimates and projections subject to change, market assumptions, unknown facts and conditions, and future potentialities. A·R·C Real Estate makes no express or implied representations or warranties, as facts and results may vary materially from all information, estimates and projections. All renderings presented are conceptual.

**A·R·C**  
REAL ESTATE

EVANSTON RETAIL SPACE AVAILABLE  
**820 DAVIS STREET**  
 Evanston, IL

