



Keegan & Coppin
COMPANY, INC.

FOR LEASE

65 MITCHELL BOULEVARD
SAN RAFAEL, CA

Northgate Business Park



REPRESENTED BY:

THEO BANKS, PARTNER
LIC # 01359605 (415) 461-1010, EXT 130
TBANKS@KEEGANCOPPIN.COM

MATT STORMS, PARTNER
LIC # 01233478 (415) 461-1010, EXT 123
MSTORMS@KEEGANCOPPIN.COM



OFFICE SPACE FOR LEASE



65 MITCHELL BOULEVARD
SAN RAFAEL, CA

**NORTHGATE BUSINESS
PARK LOCATION**

PROPERTY INFORMATION

HIGHLIGHTS

- High-quality finishes
- On-site parking
- Exterior entrances
- Direct access to Highway 101
- Excellent visibility
- Class A environment

OFFICE SPACE

Suite 100: 2,850+/- sq ft

Suite 101: 4,592+/- sq ft

DESCRIPTION

First floor office suite featuring 7 private offices, a storage room, a large break room / kitchen, and a sunlight-filled open work area for cubicles.

First floor office suite featuring 6 perimeter offices, a large conference / training / class room, and a kitchen.

LEASE TERMS

Rate

\$2.65 per sq ft

Terms

Full service

3 - 5 year lease term

Annual CPI

Tenant improvements negotiable

Parking

On-site

Building size

16,056+/- sq ft

Keegan & Coppin Co., Inc.
101 Larkspur Landing Circle, Ste. 112
Larkspur, CA 94939
www.keegancoppin.com
(415) 461-1010

The above information, while not guaranteed, has been secured from sources we believe to be reliable. Submitted subject to error, change or withdrawal. An interested party should verify the status of the property and the information herein.

REPRESENTED BY:

THEO BANKS, PARTNER
LIC # 01359605 (415) 461-1010, EXT 130
TBANKS@KEEGANCOPPIN.COM

MATT STORMS, PARTNER
LIC # 01233478 (415) 461-1010, EXT 123
MSTORMS@KEEGANCOPPIN.COM



OFFICE SPACE FOR LEASE



65 MITCHELL BOULEVARD
SAN RAFAEL, CA

**NORTHGATE BUSINESS
PARK LOCATION**

DESCRIPTION OF AREA

Northgate Business Park is located in northern San Rafael with easy access to all services. The building occupies a corner site at Mitchell Boulevard and Paul Drive, providing excellent visibility.

NEARBY AMENITIES

- Close to many amenities including the Northgate Shopping district
- Quick access to Marin County Civic Center, the Marin County Emergency Operations Building, and Kaiser Hospital.

TRANSPORTATION ACCESS

- Close, easy access to Highway 101, I-580, and Highway 37
- Minutes to the Golden Gate and Richmond-San Rafael Bridges
- Close proximity to the northern San Rafael SMART Train Station



REPRESENTED BY:

THEO BANKS, PARTNER
LIC # 01359605 (415) 461-1010, EXT 130
TBANKS@KEEGANCOPPIN.COM

MATT STORMS, PARTNER
LIC # 01233478 (415) 461-1010, EXT 123
MSTORMS@KEEGANCOPPIN.COM

The above information, while not guaranteed, has been secured from sources we believe to be reliable. Submitted subject to error, change or withdrawal. An interested party should verify the status of the property and the information herein.

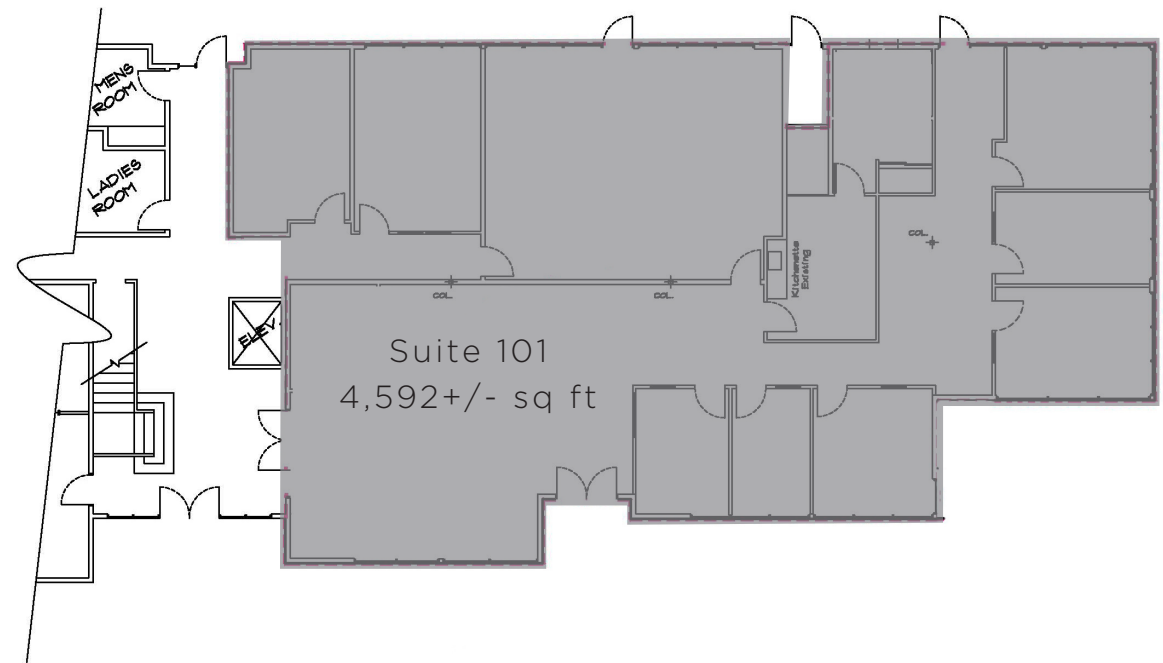
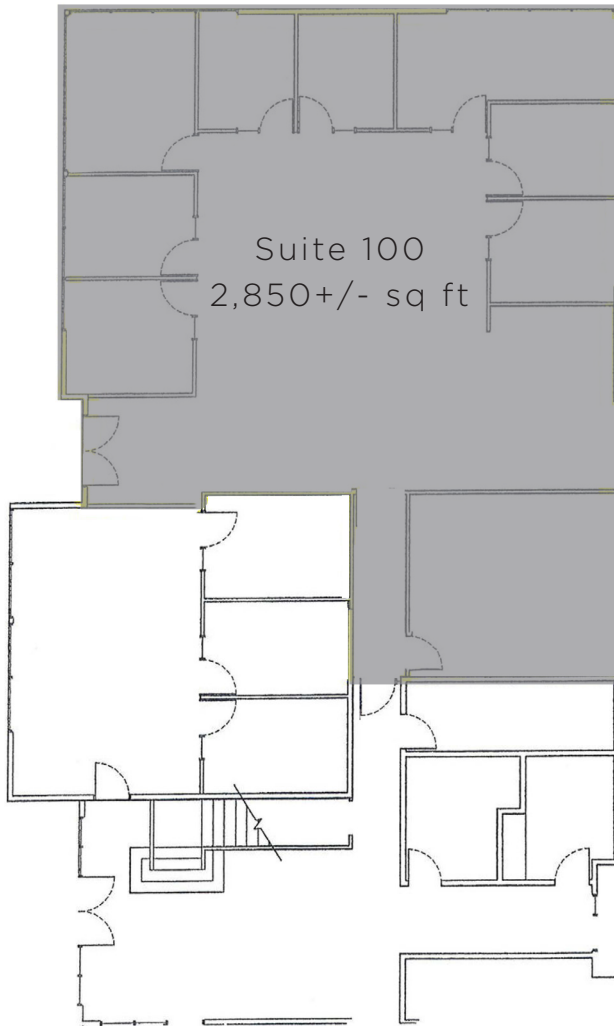


65 MITCHELL BLVD., SAN RAFAEL FLOOR PLAN



65 MITCHELL BOULEVARD
SAN RAFAEL, CA

**NORTHGATE BUSINESS
PARK LOCATION**



PRESENTED BY:

THEO BANKS, PARTNER
LIC # 01359605 (415) 461-1010, EXT 130
TBANKS@KEEGANCOPPIN.COM

MATT STORMS, PARTNER
LIC # 01233478 (415) 461-1010, EXT 123
MSTORMS@KEEGANCOPPIN.COM