

TURN-KEY MEDICAL OFFICE SPACE

10863 E. Washington Street Indianapolis, IN 46229



MIDLAND ATLANTIC
PROPERTIES



PROPERTY OVERVIEW

Former medical office with 10 exam rooms, nurse station, x-ray room and more located in East Suburban Indianapolis, IN.

PROPERTY HIGHLIGHTS

- 4,824 Square Foot Turn-key Medical Office (Former Med Express)
- Easy Access with Prime E. Washington Street Visibility
- 10 Exam Rooms, Nurse Station, X-ray Room and More
- Exposure to Over 30,000 Vehicles Per Day

DEMOGRAPHICS

	3 MILE	5 MILES
Total Population	49,297	127,947
Average HH Income	\$72,944	\$61,474
Businesses	1,268	3,476
Employees	13,417	43,426

TRAFFIC COUNTS

Washington Street	21,725
German Church Road	10,267

MIDLAND ATLANTIC PROPERTIES

Indianapolis Office
3801 East 82nd Street, Suite B
Indianapolis, IN 46240

MIDLANDATLANTIC.COM

SHAWN HEFFERN

Direct: 317.597.1715
Cell: 317.695.8938
sheffern@midlandatlantic.us

DEVELOPMENT • BROKERAGE • ACQUISITIONS • MANAGEMENT

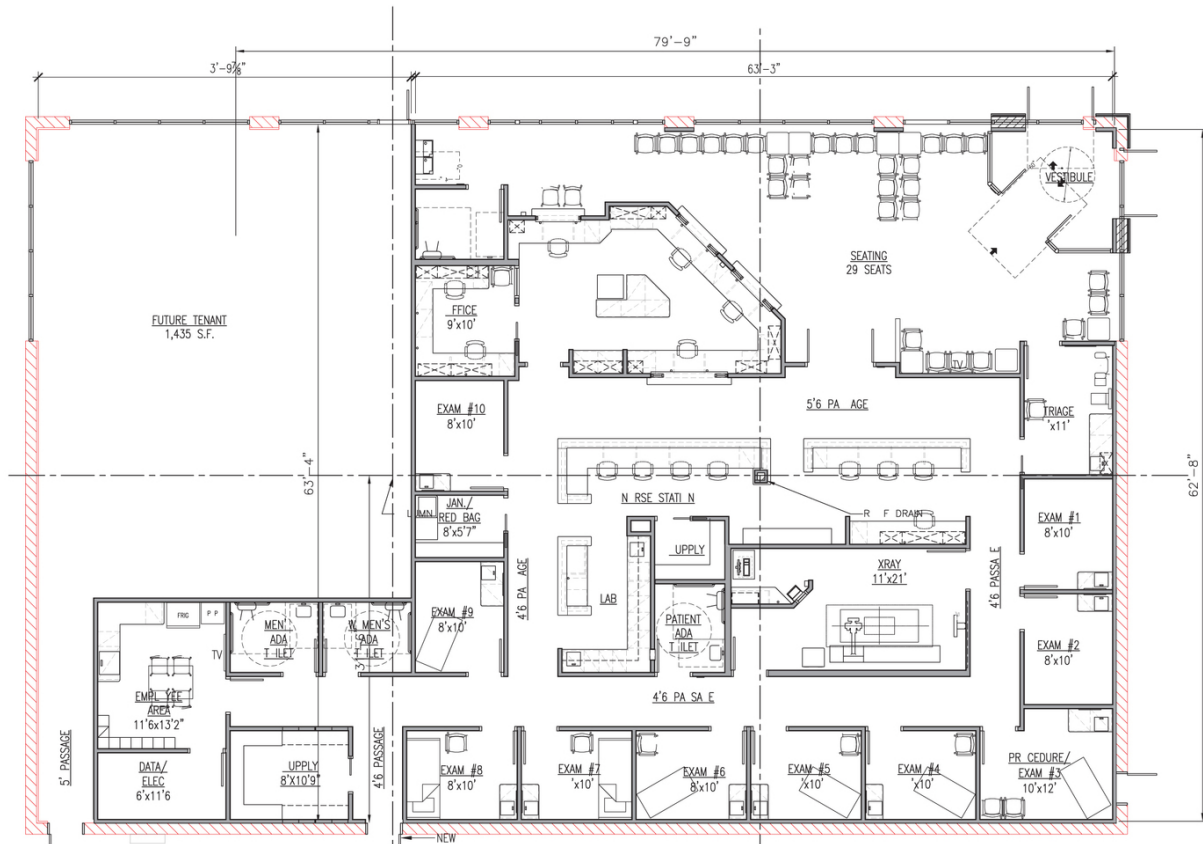
Information contained herein has been obtained from sources deemed reliable but is not guaranteed and is subject to change without notice.

TURN-KEY MEDICAL OFFICE SPACE

10863 E. Washington Street Indianapolis, IN 46229



MIDLAND ATLANTIC
PROPERTIES



TURN-KEY MEDICAL OFFICE SPACE

10863 E. Washington Street Indianapolis, IN 46229



MIDLAND ATLANTIC
PROPERTIES

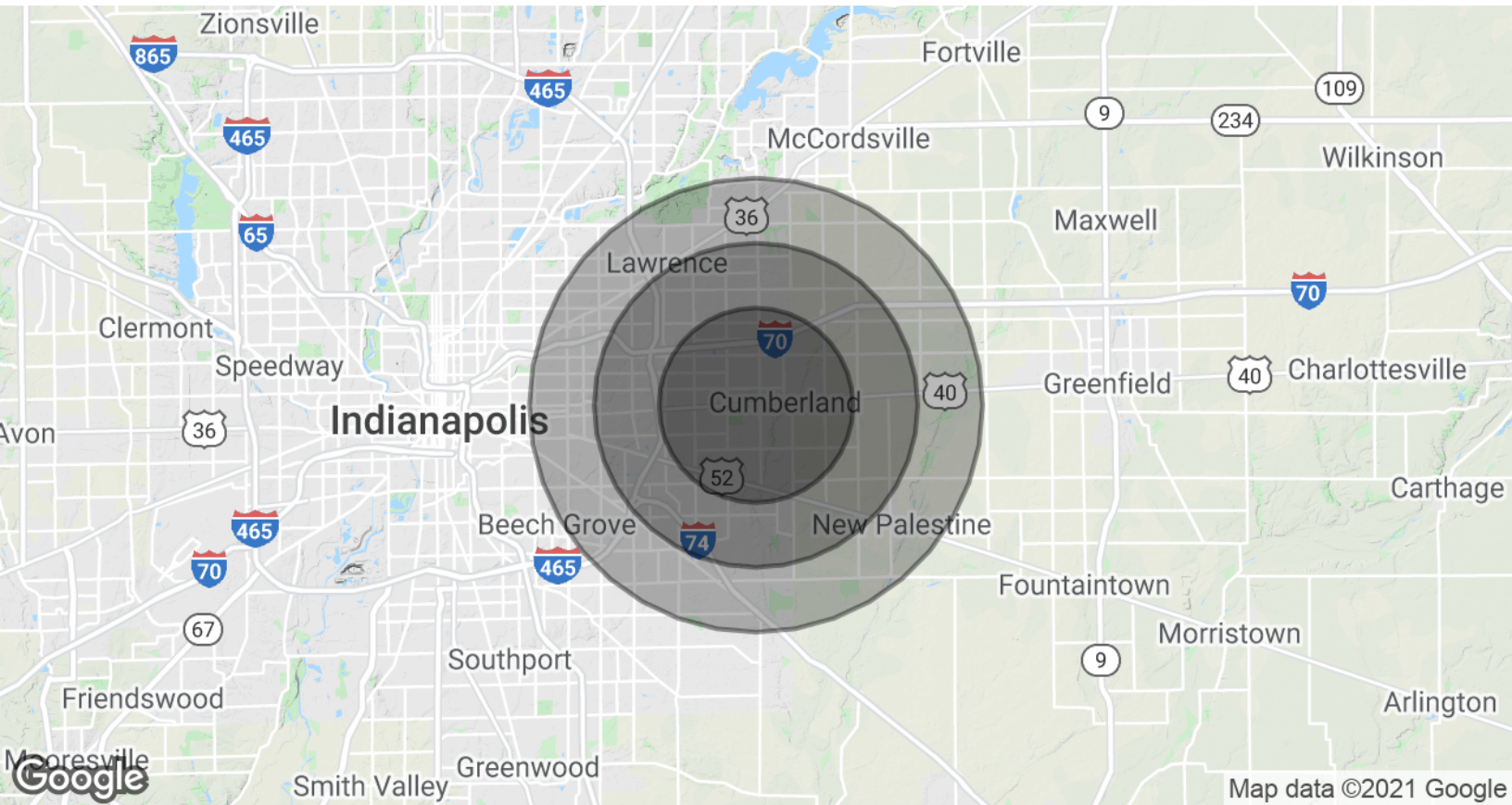


TURN-KEY MEDICAL OFFICE SPACE

10863 E. Washington Street Indianapolis, IN 46229



MIDLAND ATLANTIC
PROPERTIES



POPULATION & HOUSING

	3 MILE	5 MILES	7 MILES
Total Population	49,297	127,947	242,388
Projected Annual Growth (2019-2024)	0.3%	0.4%	0.5%
Total Households	19,190	50,029	96,818
Median Home Value	\$133,927	\$127,945	\$125,693

INCOME & BUSINESS

	3 MILE	5 MILES	7 MILES
Average HH income	\$72,944	\$61,474	\$60,698
Daytime Population (16+ years)	26,898	77,762	149,691
Total Businesses	1,268	3,476	7,010
Total Employees	13,417	43,426	82,405

MIDLAND ATLANTIC PROPERTIES

Indianapolis Office
3801 East 82nd Street, Suite B
Indianapolis, IN 46240

SHAWN HEFFERN

Direct: 317.597.1715
Cell: 317.695.8938
sheffern@midlandatlantic.us

MIDLANDATLANTIC.COM

DEVELOPMENT • BROKERAGE • ACQUISITIONS • MANAGEMENT

Information contained herein has been obtained from sources deemed reliable but is not guaranteed and is subject to change without notice.