

ONE WESTWAY

11125 EQUITY DRIVE • WESTWAY PARK • HOUSTON

 **TRANSWESTERN**[®]

KATY GRAGG
Senior Associate

713.407.8709
Katy.Gragg@transwestern.com

ERIC ANDERSON
Executive Vice President

713.407.8704
Eric.Anderson@transwestern.com

ONE WESTWAY

11125 EQUITY DRIVE | HOUSTON, TX 77041



- **Location:** 11125 Equity Drive, Houston, TX 77041
- **Building Size:** 98,223 Square Feet
- **Site:** 15 Acres
- **Typical Floor Plate:** 49,082 Square Feet
- **Number of Stories:** Two
- **Parking Ratio:** 5 : 1,000
- **Numerous points of access to Beltway 8**
- **Prominent building signage available with direct visibility on Beltway 8**
- **Improvements planned for the lobby, common areas and restrooms**



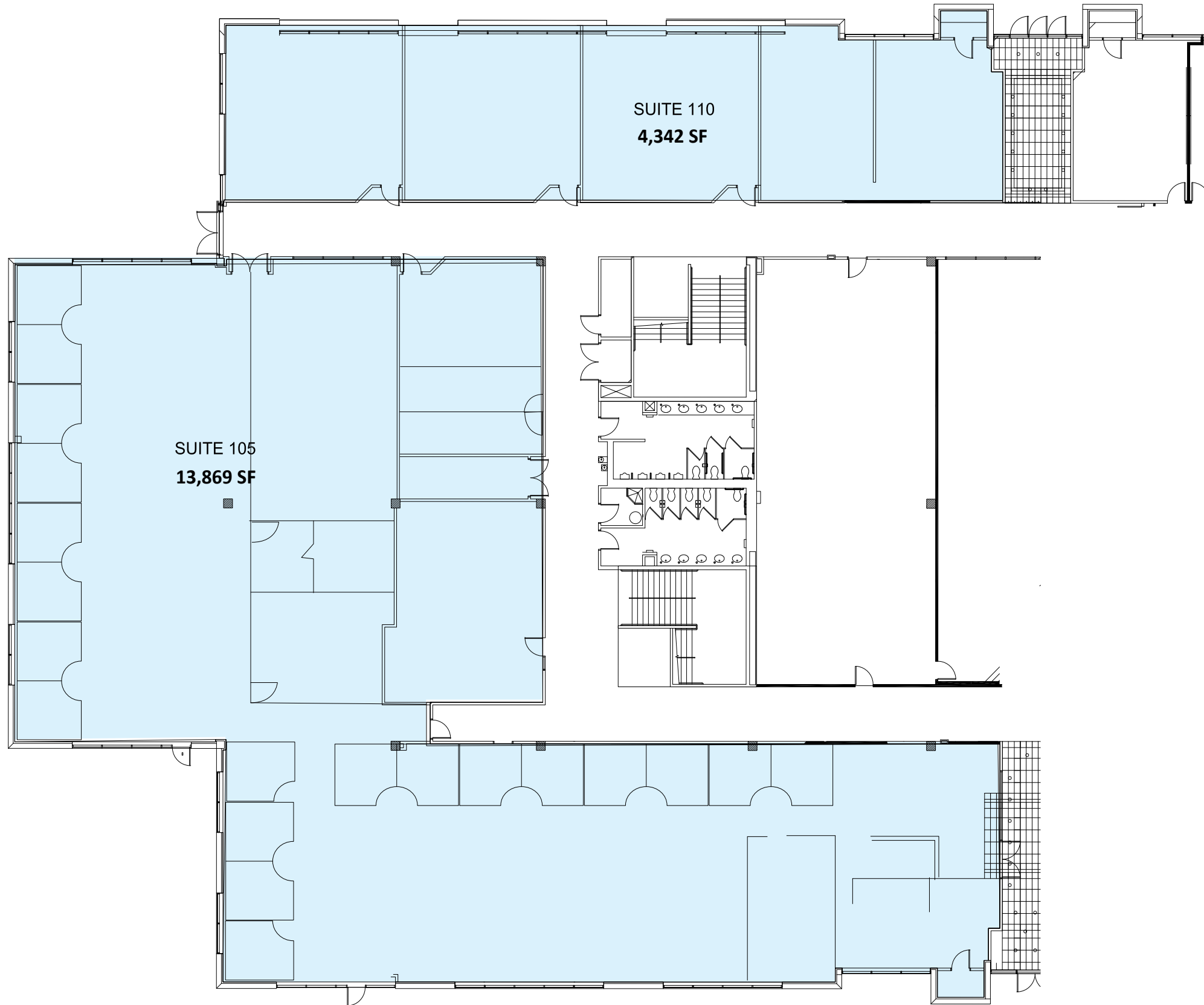
ONE WESTWAY

11125 EQUITY DRIVE | HOUSTON, TX 77041



ONE WESTWAY

11125 EQUITY DRIVE | HOUSTON, TX 77041



KEY VACANCY ATTRIBUTES

PRIME LOBBY EXPOSURE

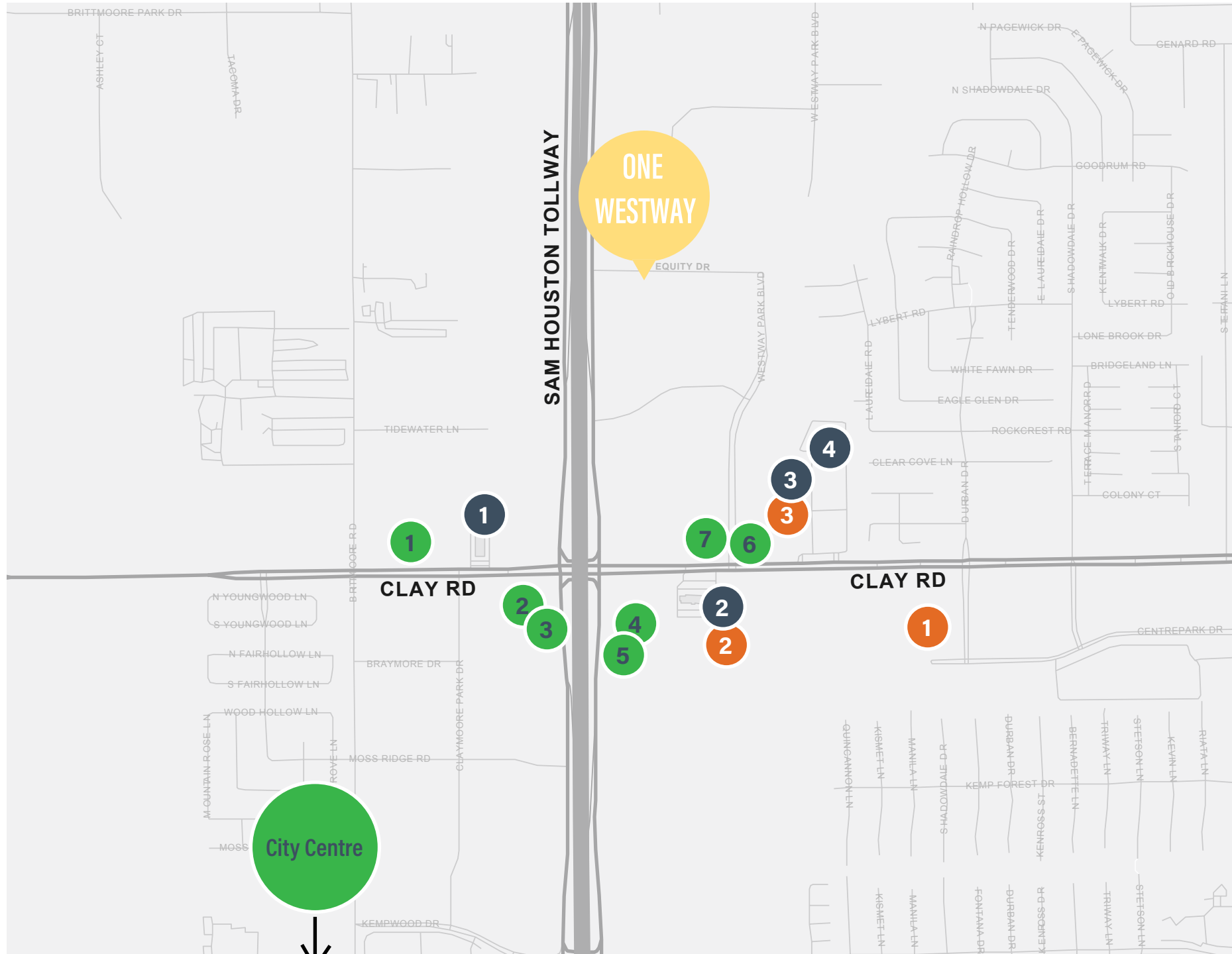
RECTANGULAR PODS FOR EFFICIENT LAYOUT

9 1/2' CEILINGS

UPDATED RESTROOMS AND CORRIDORS PLANNED

ONE WESTWAY

11125 EQUITY DRIVE | HOUSTON, TX 77041



Class A Mixed Use Development

26 restaurants

19 Shops

10 Experience & Lifestyle

2 Hotels

Local Amenities

Restaurants

- 1** Church's Chicken
- 2** Taco Cabana
- 3** Sonic
- 4** McDonald's
- 5** James Coney Island
- 6** Subway, backyard Cafe & Grill, Neighbor's Kitchen
- 7** Murphy's Deli

Retail

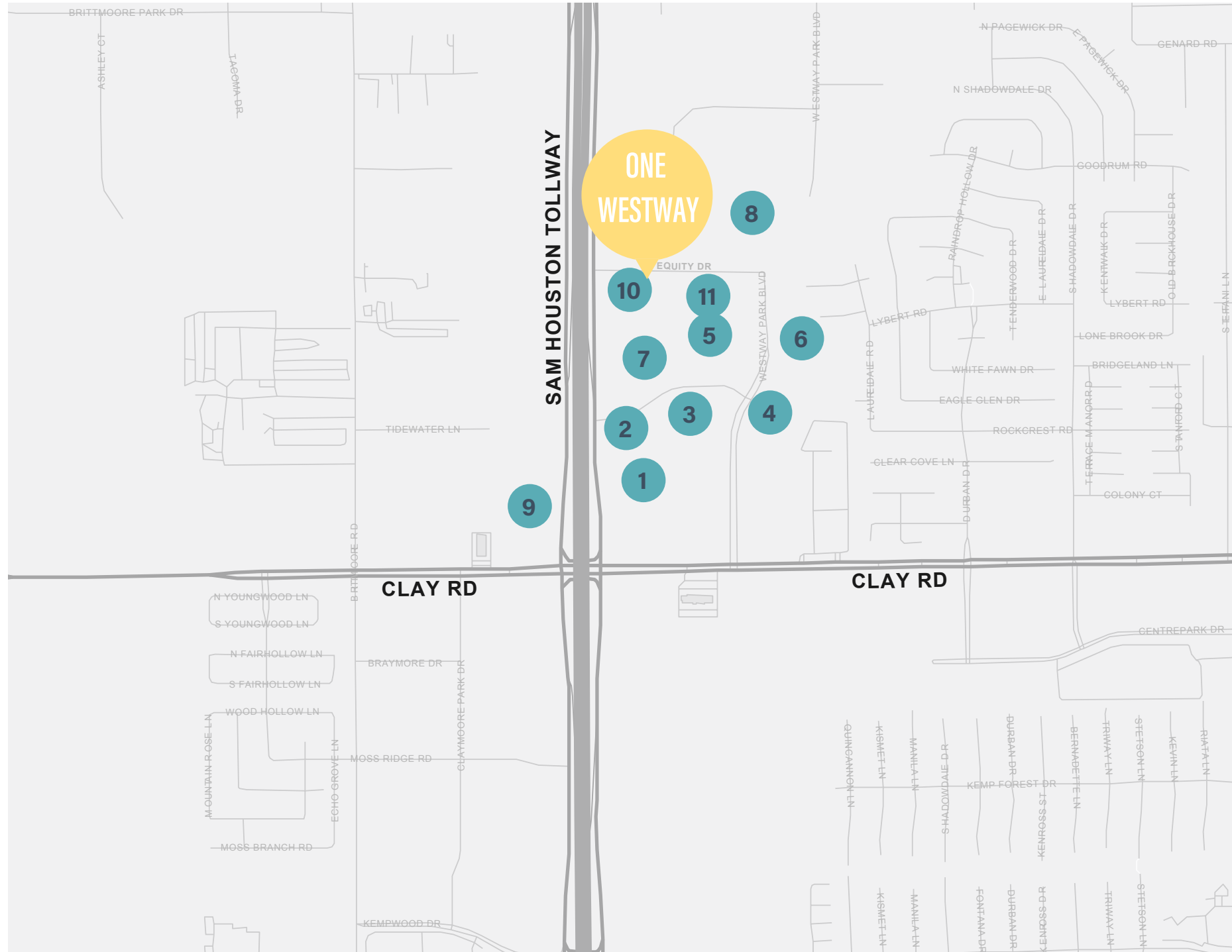
- 1** The YMCA
- 2** Central Bank
- 3** Deluxe Cleaners, Luxury Nails & Spa

Hotels

- 1** Comfort Suites
- 2** Sheraton
- 3** LaQuinta
- 4** Holiday Inn

ONE WESTWAY

11125 EQUITY DRIVE | HOUSTON, TX 77041



Neighboring Prominent Tenants

- 1 GE Oil & Gas
- 2 One Subsea
- 3 Cameron
- 4 Travelers
- 5 Seismic Exchange
- 6 Houston Apartment Association
- 7 Sigma Cubed
- 8 Schneider Electric US Equity
- 9 GE Power
- 10 PIMA
- 11 Seadrill

FOR LEASING INFORMATION

Katy Gragg
Senior Associate

713.407.8709

Parket.Burkett@transwestern.com

Eric Anderson
Executive Vice President

713.407.8704

Eric.Anderson@transwestern.com

